

Converting Colors

Hex(C8B49D)

Have a look what the booklet for
Hex(C8B49D) contains.

Hex(C8B49D)	3
<i>Conversions</i>	4
<i>Details</i>	6
<i>Harmonies</i>	11
<i>Previews</i>	23
<i>Color Blindness Simulation</i>	26
<i>CSS Examples</i>	29

Color

Hex(C8B49D)

Conversions

Conversions Part 1

Format	Color
Hex	C8B49D
RGB	200, 180, 157
RGB Percent	78%, 71%, 62%
CMY	0.2157, 0.2941, 0.3843
CMYK	0.00, 0.10, 0.21, 0.22
HSL	32°, 28%, 70%
HSV	32°, 21%, 78%
XYZ	46.2265, 47.3562, 38.6026
YIQ	183.3580, 19.3030, -2.9130

Conversions

Conversions Part 2

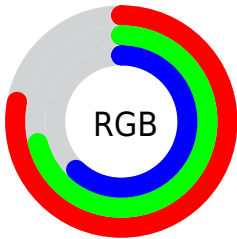
Format	Color
RYB	194, 200, 157
Decimal	13153437
CIELab	74.42, 3.48, 14.34
CIELCh	74, 14.755, 76.367
Yxy	47.3562, 0.3497, 0.3583
Android (android.graphics.Color)	4291343517 (0xFFC8B49D)
YUV	183.3580, -12.9945, 14.5950
Hunter-Lab	68.8158, -0.5218, 14.9121

Details

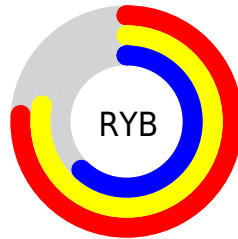
The Hex color **C8B49D** is a light color, and the websafe version is hex **CCCCCC**. A complement of this color would be **9DB1C8**, and the grayscale version is **B7B7B7**.

A 20% lighter version of the original color is **FFECD4**, and **927F6A** is the 20% darker color. If you saturate the color by 10%, you get **C8AB89**, and if you desaturate by 10%, it is **C8BDB1**.

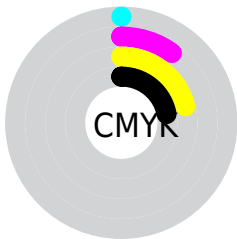
Distribution



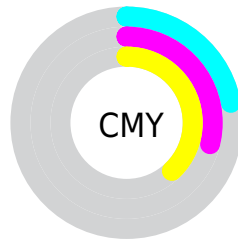
- Red (78%)
- Green (71%)
- Blue (62%)



- Red (76%)
- Yellow (78%)
- Blue (62%)



- Cyan (0%)
- Magenta (10%)
- Yellow (21%)
- Black (22%)



- Cyan (22%)
- Magenta (29%)
- Yellow (38%)

Brightness & Saturation Gradients

These gradients show how the Hex color C8B49D changes by changing the brightness by 10 percent. The first figure shows a shift by +10% for each color and the second figure -10%.

Similar to the brightness gradients but the following saturation gradients show a change of the Hex color C8B49D by changing the saturation by 10% instead.



C8B49D



C8B49D

FFFFFF



AC9983



FFECD4



927F6A



FFFFF0



786651



5E4E3A



463825



2F2210



1A0C00



000000



C8B49D



C8B49D

 C8AB89

 C8BDB1

 C8A175

 C8C7C5

 C89861

 C8D0D9

 C88F4D

 C8D9ED

 C88539

 C8E3FF

 C87C25

 C8ECFF

 C87311

 C8F5FF

 C86B00

 C8FEFF

 C8FFFF

Harmonies

Analogous

The Analogous color harmony consists of three colors that are next to each other on the color wheel.



D1B0A4



C8B49D



BAB89D

Triad

The Triadic color harmony groups three colors that are evenly spaced from another and form a triangle on the color wheel.



C8B49D



95BFBE



C3B1CA

Complementary

The Complementary color scheme is a pair of colors which are on the opposite of each other on the color wheel.



C8B49D



9DB1C8

Split Complementary

Split-complementary colors differ from the complementary color scheme. The scheme consists of three colors, the original color and two neighbors of the complement color.



B2B6D1



C8B49D



96BDCA

Square

The Square scheme is like the rectangle color scheme, but the four colors are evenly spaced on the color wheel.



C8B49D



9DBFB0



A1BAD1



CFAEBE

Rectangle

The Rectangle color scheme consists of four colors that form a rectangle on the color wheel.



C8B49D



B0BBA1



A1BAD1



BDB3CD

Sweetspot

The Sweet Spot groups the original color and five complimentary colors.



C8B49D



FFF8F0



C89DB1



807B77



000000



808080

Same Dimension

The Same Dimension uses a secret algorithm to generate beautiful new colors.



C8B49D



FFE0BD



C7C89D



635F5A



A35700



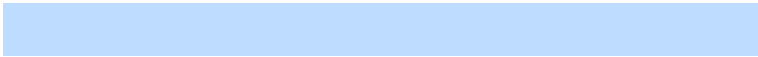
241300

Inverse Universe

The Inverse Universe completely reimagines the original color for something new.



9DB1C8



BDDCFF



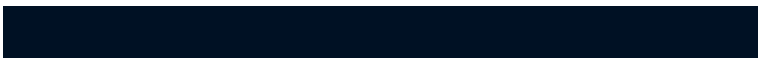
9E9DC8



5A5E63



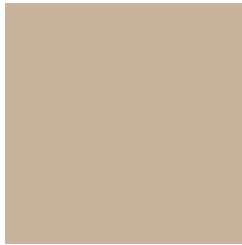
004CA3



001124

Previews

White Background



This preview shows how the Hex color C8B49D looks on a white background.

Color Contrast Check

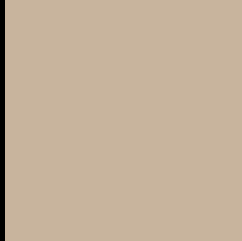
Large Text (above 18pt) WCAG AA × Fail

Any Text WCAG AA × Fail

Large Text (above 18pt) WCAG AAA × Fail

Any Text WCAG AAA × Fail

Black Background



This preview shows how the Hex color C8B49D looks on a black background.

Color Contrast Check

Large Text (above 18pt) WCAG AA ✓ Pass

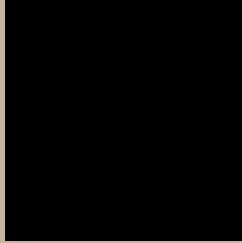
Any Text WCAG AA ✓ Pass

Large Text (above 18pt) WCAG AAA ✓ Pass

Any Text WCAG AAA ✓ Pass

If you want to check with other color combinations, try the [Color Contrast Checker](#).

Hex C8B49D Background



This preview shows how black text looks on a background with the Hex color C8B49D.



This preview shows how white text looks on a background with the Hex color C8B49D.

Color Blindness Simulation

Color vision deficiency is a very complex topic, and I could not describe the different causes any better than Wikipedia does, so if you want to learn more, you should check out their [article about color blindness](#).

Dichromacy



Original Color
C8B49D

Protanopia
C0B79E

Deuteranopia
D2B09E

Trichromacy



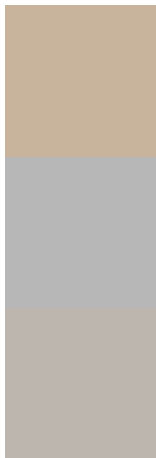
Original Color
C8B49D

Protanomaly
C3B69E

Deuteranomaly
CEB19E

Tritanomaly
CBB1B1

Monochromacy



Original Color
C8B49D

Achromatopsia
B7B7B7

Achromatomaly
BDB6AE

CSS Examples

Text

The CSS property to change the color of the text to Hex C8B49D is called "color". The color property can be set on classes, ids or directly on the HTML element.

This example shows how text in the color #C8B49D looks like.

```
.text, #text, p{  
    color:#C8B49D  
}
```

If you want to add a text shadow in that color use the text-shadow property, you can generate a text shadow directly with our [CSS Text Shadow Generator](#).

Here you see how black text with a 4 pixel #C8B49D colored shadow looks like.

```
.shadow{ text-shadow: 4px 4px 2px #C8B49D
}
```

Border

The CSS property to change the border of an element to Hex C8B49D is called "border". The border property can be set on classes, ids or directly on the HTML element.

This example shows the color as border, it can be applied via the CSS property "border" or "border-color".

```
.border, #border, table{ border:4px solid
#C8B49D }
```

If only the border color should be changed use the property `border-color`.

```
.border{ border-color:#C8B49D }
```

If you want to add a box shadow in that color use:

Here you see how a box with a 4 pixel #C8B49D colored shadow looks like.

```
.boxshadow{ -moz-box-shadow:4px 4px 4px  
4px #C8B49D; -webkit-box-shadow:4px 4px  
4px 4px #C8B49D; box-shadow:4px 4px 4px  
4px #C8B49D }
```

Background

The CSS property to change the background color of an element to Hex C8B49D is called "background". The background property can be set on classes, ids or directly on the HTML element.

```
.background, #background, body{  
background:#C8B49D }
```

If only the background color should be changed can be used:

```
.background{ background-color:#C8B49D }
```

This example shows the color as background, it is applied via the CSS property "background".

To optimize and compress your CSS code, you can use our [online CSS compressor and optimizer](#) based on csstidy. If you want to create a linear or radial gradient as background or border, check our [CSS Gradient Generator](#).

Hey! You found this booklet interesting? Support Converting Colors with the new Membership Option!

The pro membership hides all ads, plus gives you double the colors in the color bucket, and more awesome pro features!

[Learn more, Memberships starting at \\$2.50/m!](#)

**Follow me
on Twitter!**

@ConvertingColor