

# Converting Colors

Hex(C8B4B3)

Have a look what the booklet for  
Hex(C8B4B3) contains.

<b>Hex(C8B4B3)</b> .....	3
<i><b>Conversions</b></i> .....	4
<i><b>Details</b></i> .....	6
<i><b>Harmonies</b></i> .....	11
<i><b>Previews</b></i> .....	23
<i><b>Color Blindness Simulation</b></i> .....	26
<i><b>CSS Examples</b></i> .....	29

# **Color**

**Hex(C8B4B3)**

# Conversions

## Conversions Part 1

Format	Color
Hex	C8B4B3
RGB	200, 180, 179
RGB Percent	78%, 71%, 70%
CMY	0.2157, 0.2941, 0.2980
CMYK	0.00, 0.10, 0.11, 0.22
HSL	3°, 16%, 74%
HSV	3°, 11%, 78%
XYZ	48.2774, 48.1765, 49.4023
YIQ	185.8660, 12.2410, 3.9290

# Conversions

## Conversions Part 2

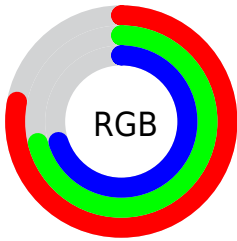
Format	Color
R <sub>Y</sub> B	200, 180, 179
Decimal	13153459
CIE Lab	74.94, 6.97, 3.10
CIE LCh	75, 7.631, 23.997
Yxy	48.1765, 0.3310, 0.3303
Android (android.graphics.Color)	4291343539 (0xFFC8B4B3)
YUV	185.8660, -3.3849, 12.3955
Hunter-Lab	69.4093, 2.6886, 6.3867

# Details

The Hex color **C8B4B3** is a light color, and the websafe version is hex **CCCCCC**. A complement of this color would be **B3C7C8**, and the grayscale version is **BABABA**.

A 20% lighter version of the original color is **FFECEB**, and **927F7E** is the 20% darker color. If you saturate the color by 10%, you get **C8A19F**, and if you desaturate by 10%, it is **C8C7C7**.

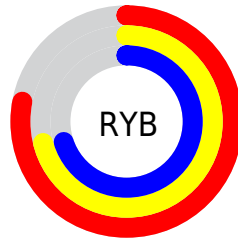
# Distribution



Red (78%)

Green (71%)

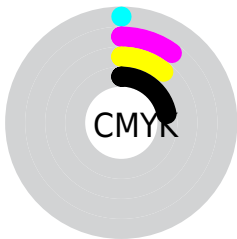
Blue (70%)



Red (78%)

Yellow (71%)

Blue (70%)

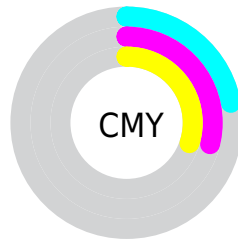


Cyan (0%)

Magenta (10%)

Yellow (11%)

Black (22%)



Cyan (22%)

Magenta (29%)

Yellow (30%)

# Brightness & Saturation Gradients

These gradients show how the Hex color C8B4B3 changes by changing the brightness by 10 percent. The first figure shows a shift by +10% for each color and the second figure -10%.

Similar to the brightness gradients but the following saturation gradients show a change of the Hex color C8B4B3 by changing the saturation by 10% instead.



 C8B4B3

 C8B4B3

FFFFFF

 AD9998

 FFECEB

 927F7E

 786665

 5F4E4D

 473737

 312221

 1D0C0B

 000000

 C8B4B3

 C8B4B3

 C8A19F

 C8C7C7

 C88E8B

 C8DADB

 C87B77

 C8EDEF

 C86863

 C8FFFF

 C8554F

 C8423B

 C82F27

 C81C13

 C80A00

# Harmonies

## Analogous

The Analogous color harmony consists of three colors that are next to each other on the color wheel.



C6B4BA



C8B4B3



C6B5AD

# Triad

The Triadic color harmony groups three colors that are evenly spaced from another and form a triangle on the color wheel.



C8B4B3



B0BCB0



B0B9C6

# Complementary

The Complementary color scheme is a pair of colors which are on the opposite of each other on the color wheel.



C8B4B3



B3C7C8

# Split Complementary

Split-complementary colors differ from the complementary color scheme. The scheme consists of three colors, the original color and two neighbors of the complement color.



A9BBC4



C8B4B3



AABDB7

# Square

The Square scheme is like the rectangle color scheme, but the four colors are evenly spaced on the color wheel.



C8B4B3



B8BAAC



A7BDBE



B8B7C5

# Rectangle

The Rectangle color scheme consists of four colors that form a rectangle on the color wheel.



C8B4B3



C2B7AB



A7BDBE



ADBAC6

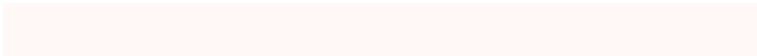


# Sweetspot

The Sweet Spot groups the original color and five complimentary colors.



C8B4B3



FFF8F7



C8B3C7



807B7A



000000



808080

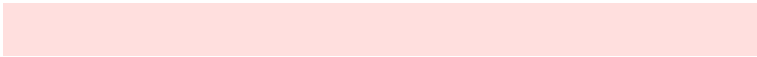


# Same Dimension

The Same Dimension uses a secret algorithm to generate beautiful new colors.



C8B4B3



FFDFDE



C8BEB3



635A5A



A30800



240200

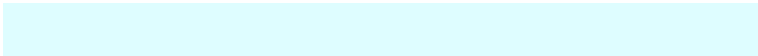


# Inverse Universe

The Inverse Universe completely reimagines the original color for something new.



B3C7C8



DEFDFE



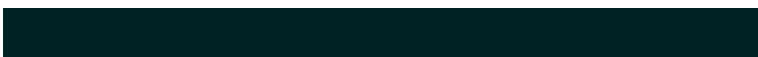
B3BDC8



5A6363



009BA3

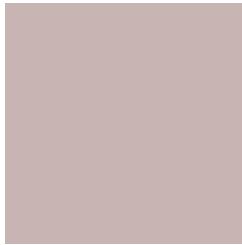


002224



# Previews

## White Background



This preview shows how the Hex color C8B4B3 looks on a white background.

## Color Contrast Check

Large Text (above 18pt) WCAG AA × Fail

Any Text WCAG AA × Fail

Large Text (above 18pt) WCAG AAA × Fail

Any Text WCAG AAA × Fail

# Black Background



This preview shows how the Hex color C8B4B3 looks on a black background.

## Color Contrast Check

Large Text (above 18pt) WCAG AA ✓ Pass

Any Text WCAG AA ✓ Pass

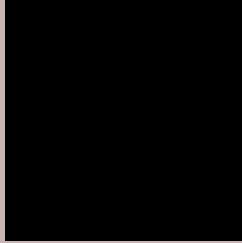
Large Text (above 18pt) WCAG AAA ✓ Pass

Any Text WCAG AAA ✓ Pass

If you want to check with other color combinations, try the [Color Contrast Checker](#).



## Hex C8B4B3 Background



This preview shows how black text looks on a background with the Hex color C8B4B3.



This preview shows how white text looks on a background with the Hex color C8B4B3.

# Color Blindness Simulation

Color vision deficiency is a very complex topic, and I could not describe the different causes any better than Wikipedia does, so if you want to learn more, you should check out their [article about color blindness](#).

## Dichromacy



**Original Color**  
C8B4B3

**Protanopia**  
BDB8B5

**Deuteranopia**  
CCB2B3



# Trichromacy



**Original Color**  
C8B4B3

**Protanomaly**  
C1B7B4

**Deuteranomaly**  
CBB3B3

**Tritanomaly**  
C9B3BB

# Monochromacy



**Original Color**  
C8B4B3

**Achromatopsia**  
BABABA

**Achromatomaly**  
BFB8B7

# CSS Examples

## Text

The CSS property to change the color of the text to Hex C8B4B3 is called "color". The color property can be set on classes, ids or directly on the HTML element.

This example shows how text in the color #C8B4B3 looks like.

```
.text, #text, p{  
    color:#C8B4B3  
}
```

If you want to add a text shadow in that color use the text-shadow property, you can generate a text shadow directly with our [CSS Text Shadow Generator](#).

Here you see how black text with a 4 pixel #C8B4B3 colored shadow looks like.

```
.shadow{ text-shadow: 4px 4px 2px #C8B4B3
}
```

## Border

The CSS property to change the border of an element to Hex C8B4B3 is called "border". The border property can be set on classes, ids or directly on the HTML element.

This example shows the color as border, it can be applied via the CSS property "border" or "border-color".

```
.border, #border, table{ border:4px solid
#C8B4B3 }
```

If only the border color should be changed use the property `border-color`.

```
.border{ border-color:#C8B4B3 }
```

If you want to add a box shadow in that color use:

Here you see how a box with a 4 pixel #C8B4B3 colored shadow looks like.

```
.boxshadow{ -moz-box-shadow:4px 4px 4px  
4px #C8B4B3; -webkit-box-shadow:4px 4px  
4px 4px #C8B4B3; box-shadow:4px 4px 4px  
4px #C8B4B3 }
```

# Background

The CSS property to change the background color of an element to Hex C8B4B3 is called "background". The background property can be set on classes, ids or directly on the HTML element.

```
.background, #background, body{  
background:#C8B4B3 }
```

If only the background color should be changed can be used:

```
.background{ background-color:#C8B4B3 }
```

This example shows the color as background, it is applied via the CSS property "background".

To optimize and compress your CSS code, you can use our [online CSS compressor and optimizer](#) based on csstidy. If you want to create a linear or radial gradient as background or border, check our [CSS Gradient Generator](#).



Hey! You found this booklet interesting? Support Converting Colors with the new Membership Option!

The pro membership hides all ads, plus gives you double the colors in the color bucket, and more awesome pro features!

**[Learn more, Memberships starting at \\$2.50/m!](#)**

**Follow me  
on Twitter!**

@ConvertingColor