

Converting Colors

Hex(C8B59C)

Have a look what the booklet for
Hex(C8B59C) contains.

Hex(C8B59C)	3
<i>Conversions</i>	4
<i>Details</i>	6
<i>Harmonies</i>	11
<i>Previews</i>	23
<i>Color Blindness Simulation</i>	26
<i>CSS Examples</i>	29

Color

Hex(C8B59C)

Conversions

Conversions Part 1

Format	Color
Hex	C8B59C
RGB	200, 181, 156
RGB Percent	78%, 71%, 61%
CMY	0.2157, 0.2902, 0.3882
CMYK	0.00, 0.09, 0.22, 0.22
HSL	34°, 29%, 70%
HSV	34°, 22%, 78%
XYZ	46.3440, 47.7274, 38.2222
YIQ	183.8310, 19.3490, -3.7470

Conversions

Conversions Part 2

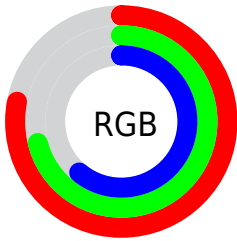
Format	Color
RYB	189, 200, 156
Decimal	13153692
CIELab	74.65, 2.80, 15.21
CIELCh	75, 15.467, 79.588
Yxy	47.7274, 0.3503, 0.3608
Android (android.graphics.Color)	4291343772 (0xFFC8B59C)
YUV	183.8310, -13.7207, 14.1802
Hunter-Lab	69.0850, -1.1563, 15.5565

Details

The Hex color **C8B59C** is a light color, and the websafe version is hex **CCCC99**. A complement of this color would be **9CAFC8**, and the grayscale version is **B8B8B8**.

A 20% lighter version of the original color is **FFEDD3**, and **928069** is the 20% darker color. If you saturate the color by 10%, you get **C8AC88**, and if you desaturate by 10%, it is **C8BEB0**.

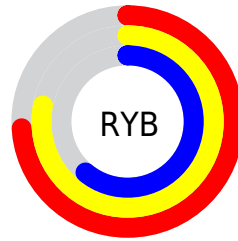
Distribution



Red (78%)

Green (71%)

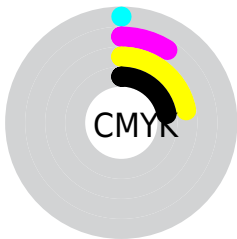
Blue (61%)



Red (74%)

Yellow (78%)

Blue (61%)

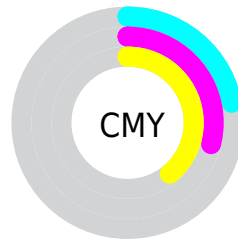


Cyan (0%)

Magenta (9%)

Yellow (22%)

Black (22%)



Cyan (22%)

Magenta (29%)

Yellow (39%)

Brightness & Saturation Gradients

These gradients show how the Hex color C8B59C changes by changing the brightness by 10 percent. The first figure shows a shift by +10% for each color and the second figure -10%.

Similar to the brightness gradients but the following saturation gradients show a change of the Hex color C8B59C by changing the saturation by 10% instead.



C8B59C



C8B59C

FFFFFF



AC9A82



FFEDD3



928069



FFFFEF



786751



5E4F39



463824



2F230F



1A0E00



000000



C8B59C



C8B59C

 C8AC88

 C8BEB0

 C8A474

 C8C6C4

 C89B60

 C8CFD8

 C8924C

 C8D8EC

 C88A38

 C8E0FF

 C88124

 C8E9FF

 C87910

 C8F1FF

 C87200

 C8FAFF

 C8FFFF

Harmonies

Analogous

The Analogous color harmony consists of three colors that are next to each other on the color wheel.



D2B1A3



C8B59C



B9BA9D

Triad

The Triadic color harmony groups three colors that are evenly spaced from another and form a triangle on the color wheel.



C8B59C



93C0C1



C5B1CA

Complementary

The Complementary color scheme is a pair of colors which are on the opposite of each other on the color wheel.



C8B59C



9CAFC8

Split Complementary

Split-complementary colors differ from the complementary color scheme. The scheme consists of three colors, the original color and two neighbors of the complement color.



B4B6D2



C8B59C



96BECD

Square

The Square scheme is like the rectangle color scheme, but the four colors are evenly spaced on the color wheel.



C8B59C



9BC0B2



A2BAD3



D2AEBD

Rectangle

The Rectangle color scheme consists of four colors that form a rectangle on the color wheel.



C8B59C



AEBCA2



A2BAD3



C0B3CE

Sweetspot

The Sweet Spot groups the original color and five complimentary colors.



C8B59C



FFF7ED



C89CAF



807B75



000000



808080

Same Dimension

The Same Dimension uses a secret algorithm to generate beautiful new colors.



C8B59C



FFE2BD



C5C89C



635F5A



A35D00



241400

Inverse Universe

The Inverse Universe completely reimagines the original color for something new.



9CAFC8



BDD9FF



9F9CC8



5A5E63



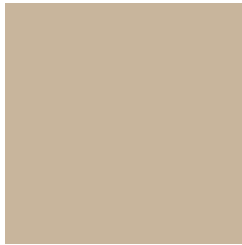
0046A3



000F24

Previews

White Background



This preview shows how the Hex color C8B59C looks on a white background.

Color Contrast Check

Large Text (above 18pt) WCAG AA × Fail

Any Text WCAG AA × Fail

Large Text (above 18pt) WCAG AAA × Fail

Any Text WCAG AAA × Fail

Black Background



This preview shows how the Hex color C8B59C looks on a black background.

Color Contrast Check

Large Text (above 18pt) WCAG AA ✓ Pass

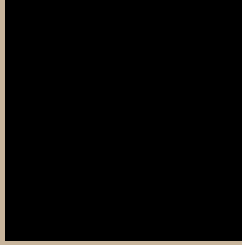
Any Text WCAG AA ✓ Pass

Large Text (above 18pt) WCAG AAA ✓ Pass

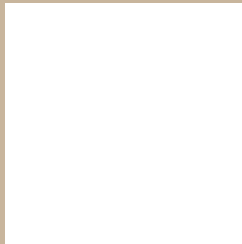
Any Text WCAG AAA ✓ Pass

If you want to check with other color combinations, try the [Color Contrast Checker](#).

Hex C8B59C Background



This preview shows how black text looks on a background with the Hex color C8B59C.



This preview shows how white text looks on a background with the Hex color C8B59C.

Color Blindness Simulation

Color vision deficiency is a very complex topic, and I could not describe the different causes any better than Wikipedia does, so if you want to learn more, you should check out their [article about color blindness](#).

Dichromacy



Trichromacy



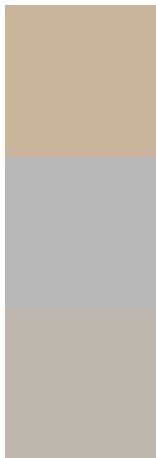
Original Color
C8B59C

Protanomaly
C4B69D

Deuteranomaly
CFB29D

Tritanomaly
CBB2B2

Monochromacy



Original Color
C8B59C

Achromatopsia
B8B8B8

Achromatomaly
BEB7AE

CSS Examples

Text

The CSS property to change the color of the text to Hex C8B59C is called "color". The color property can be set on classes, ids or directly on the HTML element.

This example shows how text in the color #C8B59C looks like.

```
.text, #text, p{  
    color:#C8B59C  
}
```

If you want to add a text shadow in that color use the text-shadow property, you can generate a text shadow directly with our [CSS Text Shadow Generator](#).

Here you see how black text with a 4 pixel #C8B59C colored shadow looks like.

```
.shadow{ text-shadow: 4px 4px 2px #C8B59C
}
```

Border

The CSS property to change the border of an element to Hex C8B59C is called "border". The border property can be set on classes, ids or directly on the HTML element.

This example shows the color as border, it can be applied via the CSS property "border" or "border-color".

```
.border, #border, table{ border:4px solid
#C8B59C }
```

If only the border color should be changed use the property `border-color`.

```
.border{ border-color:#C8B59C }
```

If you want to add a box shadow in that color use:

Here you see how a box with a 4 pixel #C8B59C colored shadow looks like.

```
.boxshadow{ -moz-box-shadow:4px 4px 4px  
4px #C8B59C; -webkit-box-shadow:4px 4px  
4px 4px #C8B59C; box-shadow:4px 4px 4px  
4px #C8B59C }
```

Background

The CSS property to change the background color of an element to Hex C8B59C is called "background". The background property can be set on classes, ids or directly on the HTML element.

```
.background, #background, body{  
background:#C8B59C }
```

If only the background color should be changed can be used:

```
.background{ background-color:#C8B59C }
```

This example shows the color as background, it is applied via the CSS property "background".

To optimize and compress your CSS code, you can use our [online CSS compressor and optimizer](#) based on csstidy. If you want to create a linear or radial gradient as background or border, check our [CSS Gradient Generator](#).

Hey! You found this booklet interesting? Support Converting Colors with the new Membership Option!

The pro membership hides all ads, plus gives you double the colors in the color bucket, and more awesome pro features!

[Learn more, Memberships starting at \\$2.50/m!](#)

**Follow me
on Twitter!**

@ConvertingColor