

Converting Colors

Hex(C8B7B5)

Have a look what the booklet for
Hex(C8B7B5) contains.

Hex(C8B7B5)	3
<i>Conversions</i>	4
<i>Details</i>	6
<i>Harmonies</i>	11
<i>Previews</i>	23
<i>Color Blindness Simulation</i>	26
<i>CSS Examples</i>	29

Color

Hex(C8B7B5)

Conversions

Conversions Part 1

Format	Color
Hex	C8B7B5
RGB	200, 183, 181
RGB Percent	78%, 72%, 71%
CMY	0.2157, 0.2824, 0.2902
CMYK	0.00, 0.08, 0.09, 0.22
HSL	6°, 15%, 75%
HSV	6°, 9%, 78%
XYZ	49.0934, 49.4825, 50.6796
YIQ	187.8550, 10.7740, 2.9820

Conversions

Conversions Part 2

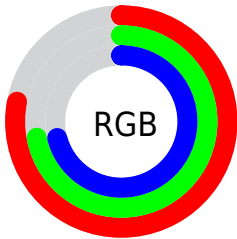
Format	Color
R _Y B	200, 183, 181
Decimal	13154229
CIE Lab	75.75, 5.70, 3.19
CIE LCh	76, 6.531, 29.282
Yxy	49.4825, 0.3289, 0.3315
Android (android.graphics.Color)	4291344309 (0xFFC8B7B5)
YUV	187.8550, -3.3795, 10.6512
Hunter-Lab	70.3438, 1.4746, 6.5248

Details

The Hex color **C8B7B5** is a light color, and the websafe version is hex **CCCCCC**. A complement of this color would be **B5C6C8**, and the grayscale version is **BCBCBC**.

A 20% lighter version of the original color is **FFEFED**, and **928280** is the 20% darker color. If you saturate the color by 10%, you get **C8A5A1**, and if you desaturate by 10%, it is **C8C9C9**.

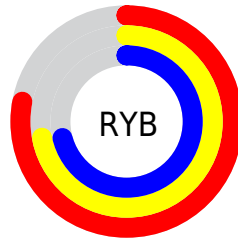
Distribution



Red (78%)

Green (72%)

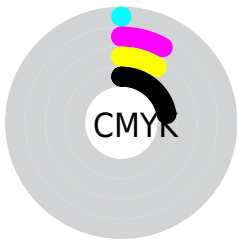
Blue (71%)



Red (78%)

Yellow (72%)

Blue (71%)

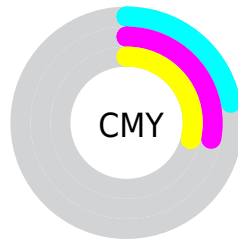


Cyan (0%)

Magenta (8%)

Yellow (9%)

Black (22%)



Cyan (22%)

Magenta (28%)

Yellow (29%)

Brightness & Saturation Gradients

These gradients show how the Hex color C8B7B5 changes by changing the brightness by 10 percent. The first figure shows a shift by +10% for each color and the second figure -10%.

Similar to the brightness gradients but the following saturation gradients show a change of the Hex color C8B7B5 by changing the saturation by 10% instead.

 C8B7B5

 C8B7B5

FFFFFF

 AD9C9A

 FFEFED

 928280

 786967

 5F514F

 483A38

 312423

 1D0F0D

 000000

 C8B7B5

 C8B7B5

 C8A5A1

 C8C9C9

 C8938D

 C8DBDD

 C88179

 C8EDF1

 C86F65

 C8FFFF

 C85E51

 C84C3D

 C83A29

 C82815

 C81601

Harmonies

Analogous

The Analogous color harmony consists of three colors that are next to each other on the color wheel.



C7B7BB



C8B7B5



C5B8B1

Triad

The Triadic color harmony groups three colors that are evenly spaced from another and form a triangle on the color wheel.



C8B7B5



B2BEB4



B4BBC7

Complementary

The Complementary color scheme is a pair of colors which are on the opposite of each other on the color wheel.



C8B7B5



B5C6C8

Split Complementary

Split-complementary colors differ from the complementary color scheme. The scheme consists of three colors, the original color and two neighbors of the complement color.



AFBDC5



C8B7B5



AEBEBA

Square

The Square scheme is like the rectangle color scheme, but the four colors are evenly spaced on the color wheel.



C8B7B5



B9BCB0



ACBEC0



BCB9C5

Rectangle

The Rectangle color scheme consists of four colors that form a rectangle on the color wheel.



C8B7B5



C2B9AF



ACBEC0



B2BCC6

Sweetspot

The Sweet Spot groups the original color and five complimentary colors.



C8B7B5



FFF8F7



C8B5C6



807B7A



000000



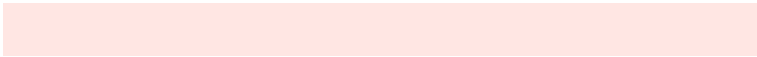
808080

Same Dimension

The Same Dimension uses a secret algorithm to generate beautiful new colors.



C8B7B5



FFE6E3



C8C0B5



635B5A



A31100



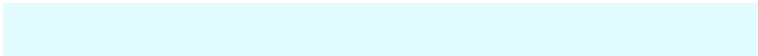
240400

Inverse Universe

The Inverse Universe completely reimagines the original color for something new.



B5C6C8



E3FCFF



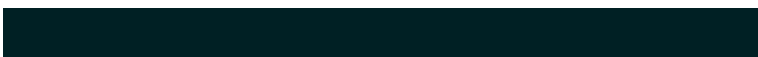
B5BDC8



5A6263



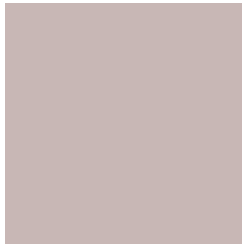
0092A3



002024

Previews

White Background



This preview shows how the Hex color C8B7B5 looks on a white background.

Color Contrast Check

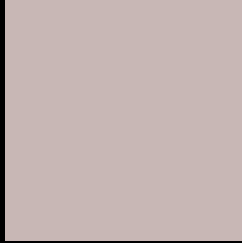
Large Text (above 18pt) WCAG AA × Fail

Any Text WCAG AA × Fail

Large Text (above 18pt) WCAG AAA × Fail

Any Text WCAG AAA × Fail

Black Background



This preview shows how the Hex color C8B7B5 looks on a black background.

Color Contrast Check

Large Text (above 18pt) WCAG AA ✓ Pass

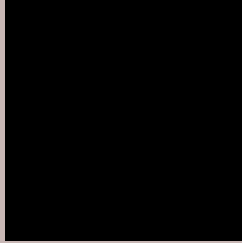
Any Text WCAG AA ✓ Pass

Large Text (above 18pt) WCAG AAA ✓ Pass

Any Text WCAG AAA ✓ Pass

If you want to check with other color combinations, try the [Color Contrast Checker](#).

Hex C8B7B5 Background



This preview shows how black text looks on a background with the Hex color C8B7B5.



This preview shows how white text looks on a background with the Hex color C8B7B5.

Color Blindness Simulation

Color vision deficiency is a very complex topic, and I could not describe the different causes any better than Wikipedia does, so if you want to learn more, you should check out their [article about color blindness](#).

Dichromacy



Original Color
C8B7B5

Protanopia
BFBAB7

Deuteranopia
CFB5B5

Trichromacy



Original Color
C8B7B5

Protanomaly
C2B9B6

Deuteranomaly
CCB6B5

Tritanomaly
C9B6BE

Monochromacy



Original Color
C8B7B5

Achromatopsia
BCBCBC

Achromatomaly
C0BAB9

CSS Examples

Text

The CSS property to change the color of the text to Hex C8B7B5 is called "color". The color property can be set on classes, ids or directly on the HTML element.

This example shows how text in the color #C8B7B5 looks like.

```
.text, #text, p{  
    color:#C8B7B5  
}
```

If you want to add a text shadow in that color use the text-shadow property, you can generate a text shadow directly with our [CSS Text Shadow Generator](#).

Here you see how black text with a 4 pixel #C8B7B5 colored shadow looks like.

```
.shadow{ text-shadow: 4px 4px 2px #C8B7B5
}
```

Border

The CSS property to change the border of an element to Hex C8B7B5 is called "border". The border property can be set on classes, ids or directly on the HTML element.

This example shows the color as border, it can be applied via the CSS property "border" or "border-color".

```
.border, #border, table{ border:4px solid
#C8B7B5 }
```

If only the border color should be changed use the property `border-color`.

```
.border{ border-color:#C8B7B5 }
```

If you want to add a box shadow in that color use:

Here you see how a box with a 4 pixel #C8B7B5 colored shadow looks like.

```
.boxshadow{ -moz-box-shadow:4px 4px 4px  
4px #C8B7B5; -webkit-box-shadow:4px 4px  
4px 4px #C8B7B5; box-shadow:4px 4px 4px  
4px #C8B7B5 }
```

Background

The CSS property to change the background color of an element to Hex C8B7B5 is called "background". The background property can be set on classes, ids or directly on the HTML element.

```
.background, #background, body{  
background:#C8B7B5 }
```

If only the background color should be changed can be used:

```
.background{ background-color:#C8B7B5 }
```

This example shows the color as background, it is applied via the CSS property "background".

To optimize and compress your CSS code, you can use our [online CSS compressor and optimizer](#) based on csstidy. If you want to create a linear or radial gradient as background or border, check our [CSS Gradient Generator](#).

Hey! You found this booklet interesting? Support Converting Colors with the new Membership Option!

The pro membership hides all ads, plus gives you double the colors in the color bucket, and more awesome pro features!

[Learn more, Memberships starting at \\$2.50/m!](#)

**Follow me
on Twitter!**

@ConvertingColor