

Converting Colors

Hex(C8B9B9)

Have a look what the booklet for
Hex(C8B9B9) contains.

Hex(C8B9B9)	3
<i>Conversions</i>	4
<i>Details</i>	6
<i>Harmonies</i>	11
<i>Previews</i>	23
<i>Color Blindness Simulation</i>	26
<i>CSS Examples</i>	29

Color

Hex(C8B9B9)

Conversions

Conversions Part 1

Format	Color
Hex	C8B9B9
RGB	200, 185, 185
RGB Percent	78%, 73%, 73%
CMY	0.2157, 0.2745, 0.2745
CMYK	0.00, 0.08, 0.08, 0.22
HSL	0°, 12%, 75%
HSV	0°, 8%, 78%
XYZ	49.9253, 50.4801, 53.0112
YIQ	189.4850, 8.9400, 3.1800

Conversions

Conversions Part 2

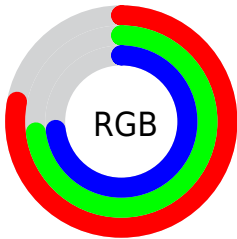
Format	Color
R_{YB}	200, 185, 185
Decimal	13154745
CIE Lab	76.36, 5.31, 1.91
CIE LCh	76, 5.643, 19.773
Yxy	50.4801, 0.3254, 0.3290
Android (android.graphics.Color)	4291344825 (0xFFC8B9B9)
YUV	189.4850, -2.2111, 9.2217
Hunter-Lab	71.0493, 1.0931, 5.4972

Details

The Hex color **C8B9B9** is a light color, and the websafe version is hex **CCCCCC**. A complement of this color would be **B9C8C8**, and the grayscale version is **BDBDBD**.

A 20% lighter version of the original color is **FFF1F1**, and **928484** is the 20% darker color. If you saturate the color by 10%, you get **C8A5A5**, and if you desaturate by 10%, it is **C8CDCD**.

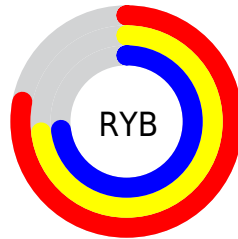
Distribution



Red (78%)

Green (73%)

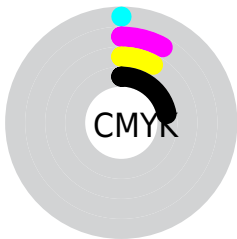
Blue (73%)



Red (78%)

Yellow (73%)

Blue (73%)

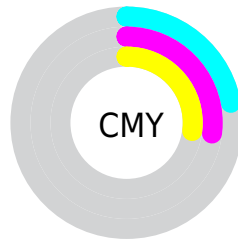


Cyan (0%)

Magenta (8%)

Yellow (8%)

Black (22%)



Cyan (22%)

Magenta (27%)

Yellow (27%)

Brightness & Saturation Gradients

These gradients show how the Hex color C8B9B9 changes by changing the brightness by 10 percent. The first figure shows a shift by +10% for each color and the second figure -10%.

Similar to the brightness gradients but the following saturation gradients show a change of the Hex color C8B9B9 by changing the saturation by 10% instead.

 C8B9B9

FFFFFF

 FFF1F1

 C8B9B9

 AD9E9E

 928484

 786B6B

 5F5353

 483C3C

 312626

 1C1111

 000000

 C8B9B9

 C8B9B9

 C8A5A5

 C8CDCD

 C89191

 C8E1E1

 C87D7D

 C8F5F5

 C86969

 C8FFFF

 C85555

 C84141

 C82D2D

 C81919

 C80505

Harmonies

Analogous

The Analogous color harmony consists of three colors that are next to each other on the color wheel.



C6B9BE



C8B9B9



C7BAB5

Triad

The Triadic color harmony groups three colors that are evenly spaced from another and form a triangle on the color wheel.



C8B9B9



B7FBF5



B5BDC6

Complementary

The Complementary color scheme is a pair of colors which are on the opposite of each other on the color wheel.



C8B9B9



B9C8C8

Split Complementary

Split-complementary colors differ from the complementary color scheme. The scheme consists of three colors, the original color and two neighbors of the complement color.



B1BFC4



C8B9B9



B2BFBA

Square

The Square scheme is like the rectangle color scheme, but the four colors are evenly spaced on the color wheel.



C8B9B9



BDBDB3



B0BFC0



BBCC6

Rectangle

The Rectangle color scheme consists of four colors that form a rectangle on the color wheel.



C8B9B9



C4BBB3



B0BFC0



B4BEC6

Sweetspot

The Sweet Spot groups the original color and five complimentary colors.



C8B9B9



FFFAFA



C8B9C8



807D7D



000000



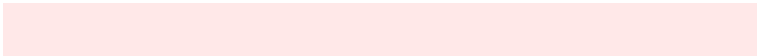
808080

Same Dimension

The Same Dimension uses a secret algorithm to generate beautiful new colors.



C8B9B9



FFE8E8



C8C1B9



635A5A



A30000



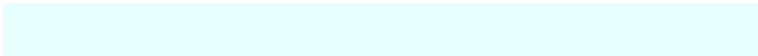
240000

Inverse Universe

The Inverse Universe completely reimagines the original color for something new.



B9C8C8



E8FFFF



B9C1C8



5A6363



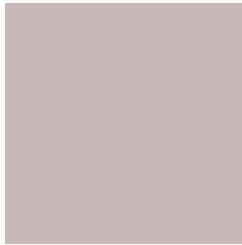
00A3A3



002424

Previews

White Background



This preview shows how the Hex color C8B9B9 looks on a white background.

Color Contrast Check

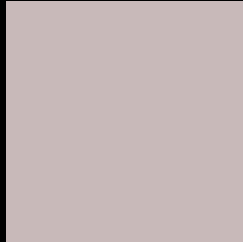
Large Text (above 18pt) WCAG AA × Fail

Any Text WCAG AA × Fail

Large Text (above 18pt) WCAG AAA × Fail

Any Text WCAG AAA × Fail

Black Background



This preview shows how the Hex color C8B9B9 looks on a black background.

Color Contrast Check

Large Text (above 18pt) WCAG AA ✓ Pass

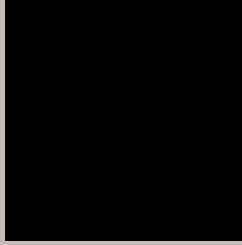
Any Text WCAG AA ✓ Pass

Large Text (above 18pt) WCAG AAA ✓ Pass

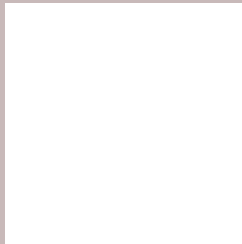
Any Text WCAG AAA ✓ Pass

If you want to check with other color combinations, try the [Color Contrast Checker](#).

Hex C8B9B9 Background



This preview shows how black text looks on a background with the Hex color C8B9B9.



This preview shows how white text looks on a background with the Hex color C8B9B9.

Color Blindness Simulation

Color vision deficiency is a very complex topic, and I could not describe the different causes any better than Wikipedia does, so if you want to learn more, you should check out their [article about color blindness](#).

Dichromacy





Tritanopia
CAB7C5

Trichromacy



Original Color
C8B9B9

Protanomaly
C3BBBA

Deuteranomaly
CDB7BA

Tritanomaly
C9B8C1

Monochromacy



Original Color
C8B9B9

Achromatopsia
BDBDBD

Achromatomaly
C1BCBC

CSS Examples

Text

The CSS property to change the color of the text to Hex C8B9B9 is called "color". The color property can be set on classes, ids or directly on the HTML element.

This example shows how text in the color #C8B9B9 looks like.

```
.text, #text, p{  
    color:#C8B9B9  
}
```

If you want to add a text shadow in that color use the text-shadow property, you can generate a text shadow directly with our [CSS Text Shadow Generator](#).

Here you see how black text with a 4 pixel #C8B9B9 colored shadow looks like.

```
.shadow{ text-shadow: 4px 4px 2px #C8B9B9
}
```

Border

The CSS property to change the border of an element to Hex C8B9B9 is called "border". The border property can be set on classes, ids or directly on the HTML element.

This example shows the color as border, it can be applied via the CSS property "border" or "border-color".

```
.border, #border, table{ border:4px solid
#C8B9B9 }
```

If only the border color should be changed use the property `border-color`.

```
.border{ border-color:#C8B9B9 }
```

If you want to add a box shadow in that color use:

Here you see how a box with a 4 pixel #C8B9B9 colored shadow looks like.

```
.boxshadow{ -moz-box-shadow:4px 4px 4px  
4px #C8B9B9; -webkit-box-shadow:4px 4px  
4px 4px #C8B9B9; box-shadow:4px 4px 4px  
4px #C8B9B9 }
```

Background

The CSS property to change the background color of an element to Hex C8B9B9 is called "background". The background property can be set on classes, ids or directly on the HTML element.

```
.background, #background, body{  
background:#C8B9B9 }
```

If only the background color should be changed can be used:

```
.background{ background-color:#C8B9B9 }
```

This example shows the color as background, it is applied via the CSS property "background".

To optimize and compress your CSS code, you can use our [online CSS compressor and optimizer](#) based on csstidy. If you want to create a linear or radial gradient as background or border, check our [CSS Gradient Generator](#).

Hey! You found this booklet interesting? Support Converting Colors with the new Membership Option!

The pro membership hides all ads, plus gives you double the colors in the color bucket, and more awesome pro features!

[Learn more, Memberships starting at \\$2.50/m!](#)

**Follow me
on Twitter!**

@ConvertingColor