

# Converting Colors

Hex(C8BABA)

Have a look what the booklet for  
Hex(C8BABA) contains.

<b>Hex(C8BABA)</b> .....	3
<i><b>Conversions</b></i> .....	4
<i><b>Details</b></i> .....	6
<i><b>Harmonies</b></i> .....	11
<i><b>Previews</b></i> .....	23
<i><b>Color Blindness Simulation</b></i> .....	26
<i><b>CSS Examples</b></i> .....	29

# **Color**

**Hex(C8BABA)**

# Conversions

## Conversions Part 1

Format	Color
Hex	C8BABA
RGB	200, 186, 186
RGB Percent	78%, 73%, 73%
CMY	0.2157, 0.2706, 0.2706
CMYK	0.00, 0.07, 0.07, 0.22
HSL	0°, 11%, 76%
HSV	0°, 7%, 78%
XYZ	50.2412, 50.9423, 53.6392
YIQ	190.1860, 8.3440, 2.9680

# Conversions

## Conversions Part 2

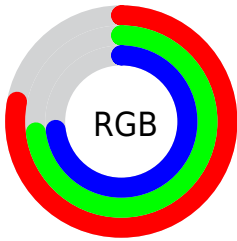
Format	Color
R <sub>Y</sub> B	200, 186, 186
Decimal	13155002
CIE Lab	76.64, 4.95, 1.77
CIE LCh	77, 5.256, 19.733
Yxy	50.9423, 0.3245, 0.3290
Android (android.graphics.Color)	4291345082 (0xFFC8BABA)
YUV	190.1860, -2.0637, 8.6069
Hunter-Lab	71.3739, 0.7447, 5.4039

# Details

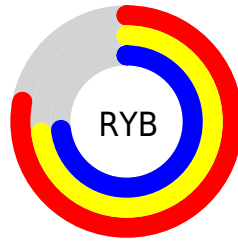
The Hex color **C8BABA** is a light color, and the websafe version is hex **CCCCCC**. A complement of this color would be **BAC8C8**, and the grayscale version is **BEBEBE**.

A 20% lighter version of the original color is **FFF2F2**, and **928585** is the 20% darker color. If you saturate the color by 10%, you get **C8A6A6**, and if you desaturate by 10%, it is **C8CECE**.

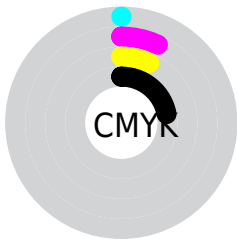
# Distribution



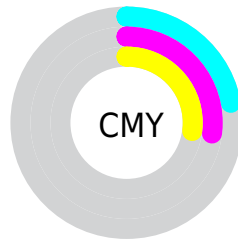
- Red (78%)
- Green (73%)
- Blue (73%)



- Red (78%)
- Yellow (73%)
- Blue (73%)



- Cyan (0%)
- Magenta (7%)
- Yellow (7%)
- Black (22%)



- Cyan (22%)
- Magenta (27%)
- Yellow (27%)

# Brightness & Saturation Gradients

These gradients show how the Hex color C8BABA changes by changing the brightness by 10 percent. The first figure shows a shift by +10% for each color and the second figure -10%.

Similar to the brightness gradients but the following saturation gradients show a change of the Hex color C8BABA by changing the saturation by 10% instead.



 C8BABA

FFFFFF

 FFF2F2

 C8BABA

 AD9F9F

 928585

 786C6C

 5F5354

 483C3C

 312727

 1C1212

 000000

 C8BABA

 C8BABA

 C8A6A6

 C8CECE

 C89292

 C8E2E2

 C87E7E

 C8F6F6

 C86A6A

 C8FFFF

 C85656

 C84242

 C82E2E

 C81A1A

 C80606

# Harmonies

## Analogous

The Analogous color harmony consists of three colors that are next to each other on the color wheel.



C6BABF



C8BABA



C7BBB6

# Triad

The Triadic color harmony groups three colors that are evenly spaced from another and form a triangle on the color wheel.



C8BABA



B8FBF7



B7BEC7

# Complementary

The Complementary color scheme is a pair of colors which are on the opposite of each other on the color wheel.



C8BABA



BAC8C8

# Split Complementary

Split-complementary colors differ from the complementary color scheme. The scheme consists of three colors, the original color and two neighbors of the complement color.



B3BFC4



C8BABA



B4C0BB

# Square

The Square scheme is like the rectangle color scheme, but the four colors are evenly spaced on the color wheel.



C8BABA



BEBEB4



B2C0C0



BCBCC6

# Rectangle

The Rectangle color scheme consists of four colors that form a rectangle on the color wheel.



C8BABA



C5BCB4



B2C0C0



B5BFC6

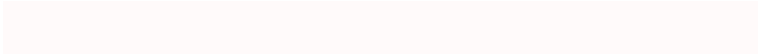


# Sweetspot

The Sweet Spot groups the original color and five complimentary colors.



C8BABA



FFFAFA



C8BAC8



807D7D



000000



808080

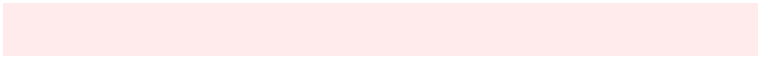


# Same Dimension

The Same Dimension uses a secret algorithm to generate beautiful new colors.



C8BABA



FFEBEF



C8C1BA



635A5A



A30000



240000

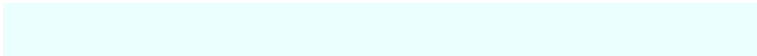


# Inverse Universe

The Inverse Universe completely reimagines the original color for something new.



BAC8C8



EBFFFF



BAC1C8



5A6363



00A3A3

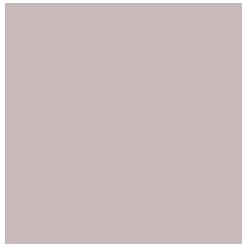


002424



# Previews

## White Background



This preview shows how the Hex color C8BABA looks on a white background.

## Color Contrast Check

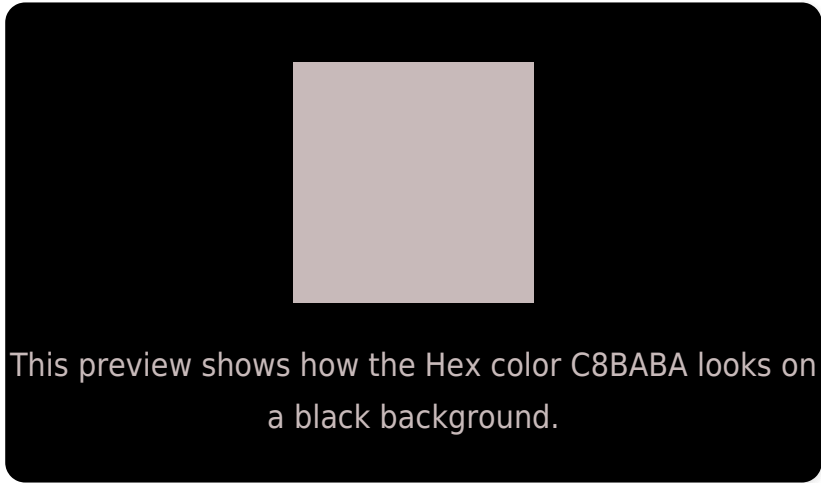
Large Text (above 18pt) WCAG AA × Fail

Any Text WCAG AA × Fail

Large Text (above 18pt) WCAG AAA × Fail

Any Text WCAG AAA × Fail

# Black Background



## Color Contrast Check

Large Text (above 18pt) WCAG AA ✓ Pass

Any Text WCAG AA ✓ Pass

Large Text (above 18pt) WCAG AAA ✓ Pass

Any Text WCAG AAA ✓ Pass

If you want to check with other color combinations, try the [Color Contrast Checker](#).



## Hex C8BABA Background



This preview shows how black text looks on a background with the Hex color C8BABA.



This preview shows how white text looks on a background with the Hex color C8BABA.

# Color Blindness Simulation

Color vision deficiency is a very complex topic, and I could not describe the different causes any better than Wikipedia does, so if you want to learn more, you should check out their [article about color blindness](#).

## Dichromacy



**Original Color**  
C8BABA

**Protanopia**  
C1BCBB

**Deuteranopia**  
D0B7BB



# Trichromacy



**Original Color**  
C8BABA

**Protanomaly**  
C4BBBB

**Deuteranomaly**  
CDB8BB

**Tritanomaly**  
C9B9C2

# Monochromacy



**Original Color**  
C8BABA

**Achromatopsia**  
BEBEBE

**Achromatomaly**  
C2BDBD

# CSS Examples

## Text

The CSS property to change the color of the text to Hex C8BABA is called "color". The color property can be set on classes, ids or directly on the HTML element.

This example shows how text in the color #C8BABA looks like.

```
.text, #text, p{  
    color:#C8BABA  
}
```

If you want to add a text shadow in that color use the text-shadow property, you can generate a text shadow directly with our [CSS Text Shadow Generator](#).

Here you see how black text with a 4 pixel #C8BABA colored shadow looks like.

```
.shadow{ text-shadow: 4px 4px 2px #C8BABA
}
```

## Border

The CSS property to change the border of an element to Hex C8BABA is called "border". The border property can be set on classes, ids or directly on the HTML element.

This example shows the color as border, it can be applied via the CSS property "border" or "border-color".

```
.border, #border, table{ border:4px solid
#C8BABA }
```

If only the border color should be changed use the property `border-color`.

```
.border{ border-color:#C8BABA }
```

If you want to add a box shadow in that color use:

Here you see how a box with a 4 pixel #C8BABA colored shadow looks like.

```
.boxshadow{ -moz-box-shadow:4px 4px 4px  
4px #C8BABA; -webkit-box-shadow:4px 4px  
4px 4px #C8BABA; box-shadow:4px 4px 4px  
4px #C8BABA }
```

# Background

The CSS property to change the background color of an element to Hex C8BABA is called "background". The background property can be set on classes, ids or directly on the HTML element.

```
.background, #background, body{  
background:#C8BABA }
```

If only the background color should be changed can be used:

```
.background{ background-color:#C8BABA }
```

This example shows the color as background, it is applied via the CSS property "background".

To optimize and compress your CSS code, you can use our [online CSS compressor and optimizer](#) based on csstidy. If you want to create a linear or radial gradient as background or border, check our [CSS Gradient Generator](#).



Hey! You found this booklet interesting? Support Converting Colors with the new Membership Option!

The pro membership hides all ads, plus gives you double the colors in the color bucket, and more awesome pro features!

**[Learn more, Memberships starting at \\$2.50/m!](#)**

**Follow me  
on Twitter!**

@ConvertingColor