

Converting Colors

Hex(C93F77)

Have a look what the booklet for
Hex(C93F77) contains.

Hex(C93F77)	3
<i>Conversions</i>	4
<i>Details</i>	6
<i>Harmonies</i>	11
<i>Previews</i>	23
<i>Color Blindness Simulation</i>	26
<i>CSS Examples</i>	29

Color

Hex(C93F77)

Conversions

Conversions Part 1

Format	Color
Hex	C93F77
RGB	201, 63, 119
RGB Percent	79%, 25%, 47%
CMY	0.2118, 0.7529, 0.5333
CMYK	0.00, 0.69, 0.41, 0.21
HSL	336°, 56%, 52%
HSV	336°, 69%, 79%
XYZ	29.1947, 17.3044, 19.2541
YIQ	110.6460, 64.2720, 46.6720

Conversions

Conversions Part 2

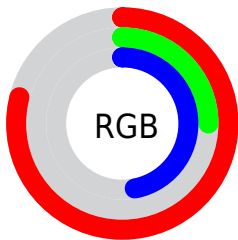
Format	Color
R_{YB}	201, 63, 119
Decimal	13188983
CIE _{Lab}	48.64, 58.73, -0.81
CIE _{LCh}	49, 58.738, 359.212
Yxy	17.3044, 0.4440, 0.2632
Android (android.graphics.Color)	4291379063 (0xFFC93F77)
YUV	110.6460, 4.1185, 79.2405
Hunter-Lab	41.5986, 52.4771, 1.6763

Details

The Hex color **C93F77** is a dark color, and the websafe version is hex **CC3366**. The color can be described as dark muted rose. A complement of this color would be **3FC991**, and the grayscale version is **6F6F6F**.

A 20% lighter version of the original color is **FF78AB**, and **8E0047** is the 20% darker color. If you saturate the color by 10%, you get **C92B6B**, and if you desaturate by 10%, it is **C95383**.

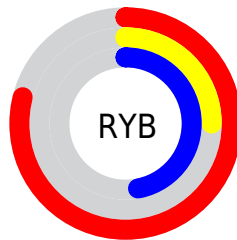
Distribution



Red (79%)

Green (25%)

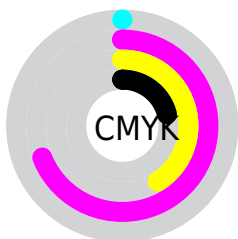
Blue (47%)



Red (79%)

Yellow (25%)

Blue (47%)

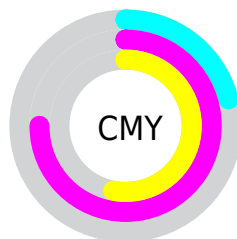


Cyan (0%)

Magenta (69%)

Yellow (41%)

Black (21%)



Cyan (21%)

Magenta (75%)

Yellow (53%)

Brightness & Saturation Gradients

These gradients show how the Hex color C93F77 changes by changing the brightness by 10 percent. The first figure shows a shift by +10% for each color and the second figure -10%.

Similar to the brightness gradients but the following saturation gradients show a change of the Hex color C93F77 by changing the saturation by 10% instead.

 C93F77

 C93F77

FFFFFF

 AB1E5E

 FF78AB

 8E0047

 FF94C6

 710031

 FFB0E2

 55001C

 FFCDFE

 3C0003

 FFEAFF

 150000

 000000

 C93F77

 C93F77

 C92B6B

 C95383

 C9175F

 C9678F

 C90353

 C97B9B

 C90052

 C98FA7

 C9A4B3

 C9B8BF

 C9CCCB

 C9E0D7

 C9F4E2

Harmonies

Analogous

The Analogous color harmony consists of three colors that are next to each other on the color wheel.



AD4FA7



C93F77



C84746

Triad

The Triadic color harmony groups three colors that are evenly spaced from another and form a triangle on the color wheel.



C93F77



5B7F09



0085C9

Complementary

The Complementary color scheme is a pair of colors which are on the opposite of each other on the color wheel.



C93F77



3FC991

Split Complementary

Split-complementary colors differ from the complementary color scheme. The scheme consists of three colors, the original color and two neighbors of the complement color.



008AA3



C93F77



00863D

Square

The Square scheme is like the rectangle color scheme, but the four colors are evenly spaced on the color wheel.



C93F77



8C7100



008A71



007AD7

Rectangle

The Rectangle color scheme consists of four colors that form a rectangle on the color wheel.



C93F77



BB5528



008A71



0087BE

Sweetspot

The Sweet Spot groups the original color and five complimentary colors.



C93F77



FFC9DF



8F3FC9



80606D



000000



808080

Same Dimension

The Same Dimension uses a secret algorithm to generate beautiful new colors.



C93F77



FF2E83



C94B3F



635A5E



A30042



24000E

Inverse Universe

The Inverse Universe completely reimagines the original color for something new.



C93F77



FF2E83



3FBEC9



635A5E



A30042



24000E

Previews

White Background



This preview shows how the Hex color C93F77 looks on a white background.

Color Contrast Check

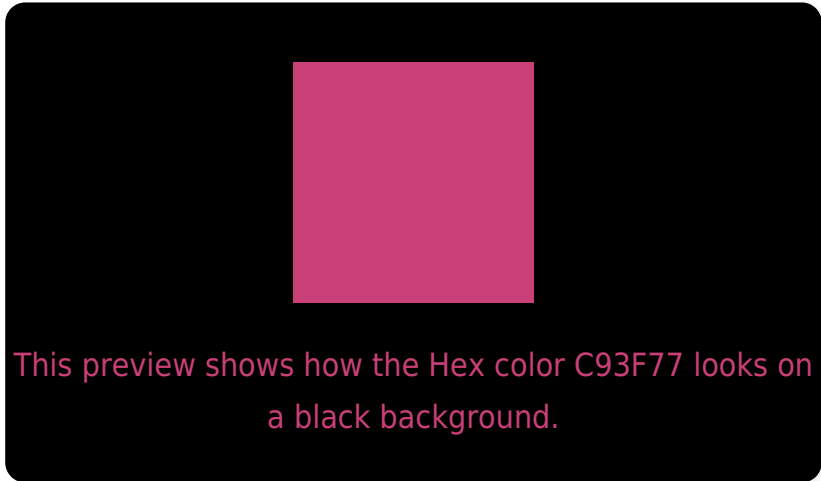
Large Text (above 18pt) WCAG AA ✓ Pass

Any Text WCAG AA ✓ Pass

Large Text (above 18pt) WCAG AAA ✓ Pass

Any Text WCAG AAA × Fail

Black Background



Color Contrast Check

Large Text (above 18pt) WCAG AA ✓ Pass

Any Text WCAG AA × Fail

Large Text (above 18pt) WCAG AAA × Fail

Any Text WCAG AAA × Fail

If you want to check with other color combinations, try the [Color Contrast Checker](#).

Hex C93F77 Background



This preview shows how black text looks on a background with the Hex color C93F77.



This preview shows how white text looks on a background with the Hex color C93F77.

Color Blindness Simulation

Color vision deficiency is a very complex topic, and I could not describe the different causes any better than Wikipedia does, so if you want to learn more, you should check out their [article about color blindness](#).


Dichromacy



Original Color
C93F77

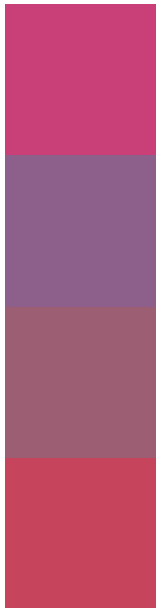
Protanopia
6B7397

Deuteranopia
817070



Tritanopia
C6494D

Trichromacy



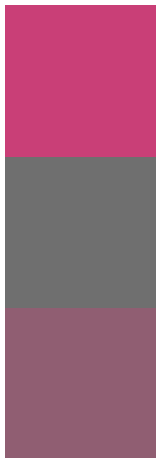
Original Color
C93F77

Protanomaly
8D608B

Deuteranomaly
9B5E73

Tritanomaly
C7455C

Monochromacy



Original Color
C93F77

Achromatopsia
6F6F6F

Achromatomaly
905E72

CSS Examples

Text

The CSS property to change the color of the text to Hex C93F77 is called "color". The color property can be set on classes, ids or directly on the HTML element.

This example shows how text in the color #C93F77 looks like.

```
.text, #text, p{  
    color:#C93F77  
}
```

If you want to add a text shadow in that color use the text-shadow property, you can generate a text shadow directly with our [CSS Text Shadow Generator](#).

Here you see how black text with a 4 pixel #C93F77 colored shadow looks like.

```
.shadow{ text-shadow: 4px 4px 2px #C93F77
}
```

Border

The CSS property to change the border of an element to Hex C93F77 is called "border". The border property can be set on classes, ids or directly on the HTML element.

This example shows the color as border, it can be applied via the CSS property "border" or "border-color".

```
.border, #border, table{ border:4px solid
#C93F77 }
```

If only the border color should be changed use the property `border-color`.

```
.border{ border-color:#C93F77 }
```

If you want to add a box shadow in that color use:

Here you see how a box with a 4 pixel #C93F77 colored shadow looks like.

```
.boxshadow{ -moz-box-shadow:4px 4px 4px  
4px #C93F77; -webkit-box-shadow:4px 4px  
4px 4px #C93F77; box-shadow:4px 4px 4px  
4px #C93F77 }
```

Background

The CSS property to change the background color of an element to Hex C93F77 is called "background". The background property can be set on classes, ids or directly on the HTML element.

```
.background, #background, body{  
background:#C93F77 }
```

If only the background color should be changed can be used:

```
.background{ background-color:#C93F77 }
```

This example shows the color as background, it is applied via the CSS property "background".

To optimize and compress your CSS code, you can use our [online CSS compressor and optimizer](#) based on csstidy. If you want to create a linear or radial gradient as background or border, check our [CSS Gradient Generator](#).

Hey! You found this booklet interesting? Support Converting Colors with the new Membership Option!

The pro membership hides all ads, plus gives you double the colors in the color bucket, and more awesome pro features!

[Learn more, Memberships starting at \\$2.50/m!](#)

**Follow me
on Twitter!**

@ConvertingColor