

# Converting Colors

Hex(C94A76)

Have a look what the booklet for  
Hex(C94A76) contains.

<b>Hex(C94A76)</b> .....	3
<i><b>Conversions</b></i> .....	4
<i><b>Details</b></i> .....	6
<i><b>Harmonies</b></i> .....	11
<i><b>Previews</b></i> .....	23
<i><b>Color Blindness Simulation</b></i> .....	26
<i><b>CSS Examples</b></i> .....	29

**Color**

**Hex(C94A76)**

# Conversions

## Conversions Part 1

<b>Format</b>	<b>Color</b>
Hex	C94A76
RGB	201, 74, 118
RGB Percent	79%, 29%, 46%
CMY	0.2118, 0.7098, 0.5373
CMYK	0.00, 0.63, 0.41, 0.21
HSL	339°, 54%, 54%
HSV	339°, 63%, 79%
XYZ	29.8062, 18.6231, 19.1632
YIQ	116.9890, 61.5680, 40.6080

# Conversions

## Conversions Part 2

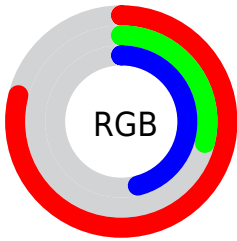
<b>Format</b>	<b>Color</b>
<b>R<sub>YB</sub></b>	201, 74, 118
Decimal	13191798
CIE <sub>Lab</sub>	50.24, 54.17, 2.13
CIE <sub>LCh</sub>	50, 54.208, 2.253
Yxy	18.6231, 0.4410, 0.2755
Android (android.graphics.Color)	4291381878 (0xFFC94A76)
YUV	116.9890, 0.4984, 73.6776
Hunter-Lab	43.1545, 47.7672, 3.8798

# Details

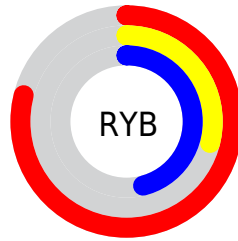
The Hex color **C94A76** is a dark color, and the websafe version is hex **CC3366**. The color can be described as dark muted rose. A complement of this color would be **4AC99D**, and the grayscale version is **757575**.

A 20% lighter version of the original color is **FF81AA**, and **8E0546** is the 20% darker color. If you saturate the color by 10%, you get **C93669**, and if you desaturate by 10%, it is **C95E83**.

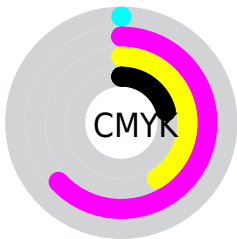
# Distribution



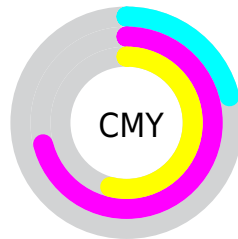
- Red (79%)
- Green (29%)
- Blue (46%)



- Red (79%)
- Yellow (29%)
- Blue (46%)



- Cyan (0%)
- Magenta (63%)
- Yellow (41%)
- Black (21%)



- Cyan (21%)
- Magenta (71%)
- Yellow (54%)

# Brightness & Saturation Gradients

These gradients show how the Hex color C94A76 changes by changing the brightness by 10 percent. The first figure shows a shift by +10% for each color and the second figure -10%.

Similar to the brightness gradients but the following saturation gradients show a change of the Hex color C94A76 by changing the saturation by 10% instead.



 C94A76

 C94A76

FFFFFF

 AB2D5D

 FF81AA

 8E0546

 FF9DC5

 720030

 FFB9E1

 56001B

 FFD6FE

 3D0002

 FFF3FF

 190001

 000000

 C94A76

 C94A76

 C93669

 C95E83

 C9225C

 C97290

 C90E4F

 C9869D

 C90046

 C99AAB

 C9AFB8

 C9C3C5

 C9D7D2

 C9EBDF

 C9FFEC

# Harmonies

## Analogous

The Analogous color harmony consists of three colors that are next to each other on the color wheel.



B255A3



C94A76



C75249

# Triad

The Triadic color harmony groups three colors that are evenly spaced from another and form a triangle on the color wheel.



C94A76



5D8321



0087C9

# Complementary

The Complementary color scheme is a pair of colors which are on the opposite of each other on the color wheel.



C94A76



4AC99D

# Split Complementary

Split-complementary colors differ from the complementary color scheme. The scheme consists of three colors, the original color and two neighbors of the complement color.



008DA8



C94A76



008A4A

# Square

The Square scheme is like the rectangle color scheme, but the four colors are evenly spaced on the color wheel.



C94A76



8B7709



008D7A



007CD4

# Rectangle

The Rectangle color scheme consists of four colors that form a rectangle on the color wheel.



C94A76



B95E2F



008D7A



008AC0



# Sweetspot

The Sweet Spot groups the original color and five complimentary colors.



C94A76



FFCFDF



9D4AC9



80626C



000000



808080



# Same Dimension

The Same Dimension uses a secret algorithm to generate beautiful new colors.



C94A76



FF3D80



C95D4A



635A5D



A30039



24000C



# Inverse Universe

The Inverse Universe completely reimagines the original color for something new.



C94A76



FF3D80



4AB6C9



635A5D



A30039



24000C



# Previews

## White Background



This preview shows how the Hex color C94A76 looks on a white background.

## Color Contrast Check

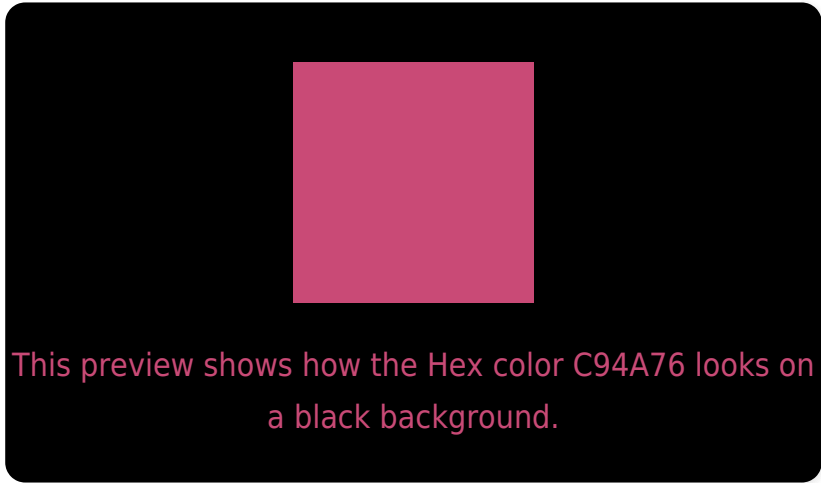
Large Text (above 18pt) WCAG AA ✓ Pass

Any Text WCAG AA × Fail

Large Text (above 18pt) WCAG AAA × Fail

Any Text WCAG AAA × Fail

# Black Background



## Color Contrast Check

Large Text (above 18pt) WCAG AA ✓ Pass

Any Text WCAG AA ✓ Pass

Large Text (above 18pt) WCAG AAA ✓ Pass

Any Text WCAG AAA × Fail

If you want to check with other color combinations, try the [Color Contrast Checker](#).



## Hex C94A76 Background



This preview shows how black text looks on a background with the Hex color C94A76.

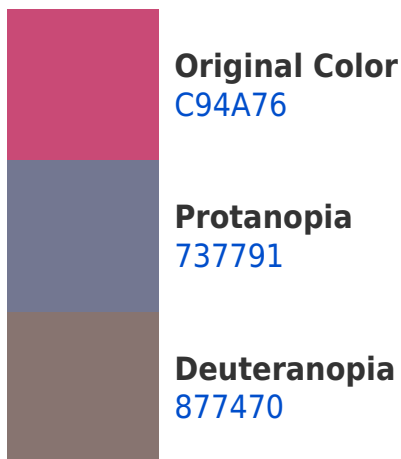



This preview shows how white text looks on a background with the Hex color C94A76.

# Color Blindness Simulation

Color vision deficiency is a very complex topic, and I could not describe the different causes any better than Wikipedia does, so if you want to learn more, you should check out their [article about color blindness](#).

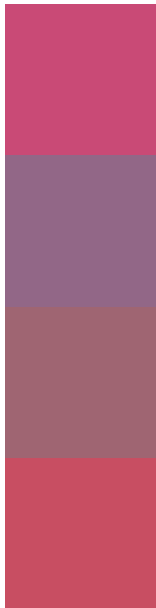
## Dichromacy





**Tritanopia**  
C75156

# Trichromacy



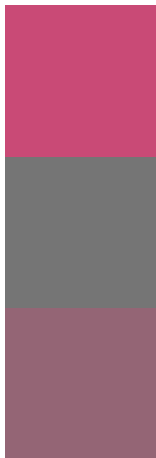
**Original Color**  
C94A76

**Protanomaly**  
926787

**Deuteranomaly**  
9F6572

**Tritanomaly**  
C84E62

# Monochromacy



**Original Color**  
C94A76

**Achromatopsia**  
757575

**Achromatomaly**  
946575

# CSS Examples

## Text

The CSS property to change the color of the text to Hex C94A76 is called "color". The color property can be set on classes, ids or directly on the HTML element.

This example shows how text in the color #C94A76 looks like.

```
.text, #text, p{  
    color:#C94A76  
}
```

If you want to add a text shadow in that color use the text-shadow property, you can generate a text shadow directly with our [CSS Text Shadow Generator](#).

Here you see how black text with a 4 pixel #C94A76 colored shadow looks like.

```
.shadow{ text-shadow: 4px 4px 2px #C94A76
}
```

## Border

The CSS property to change the border of an element to Hex C94A76 is called "border". The border property can be set on classes, ids or directly on the HTML element.

This example shows the color as border, it can be applied via the CSS property "border" or "border-color".

```
.border, #border, table{ border:4px solid
#C94A76 }
```

If only the border color should be changed use the property `border-color`.

```
.border{ border-color:#C94A76 }
```

If you want to add a box shadow in that color use:

Here you see how a box with a 4 pixel #C94A76 colored shadow looks like.

```
.boxshadow{ -moz-box-shadow:4px 4px 4px  
4px #C94A76; -webkit-box-shadow:4px 4px  
4px 4px #C94A76; box-shadow:4px 4px 4px  
4px #C94A76 }
```

# Background

The CSS property to change the background color of an element to Hex C94A76 is called "background". The background property can be set on classes, ids or directly on the HTML element.

```
.background, #background, body{  
background:#C94A76 }
```

If only the background color should be changed can be used:

```
.background{ background-color:#C94A76 }
```

This example shows the color as background, it is applied via the CSS property "background".

To optimize and compress your CSS code, you can use our [online CSS compressor and optimizer](#) based on csstidy. If you want to create a linear or radial gradient as background or border, check our [CSS Gradient Generator](#).



Hey! You found this booklet interesting? Support Converting Colors with the new Membership Option!

The pro membership hides all ads, plus gives you double the colors in the color bucket, and more awesome pro features!

**[Learn more, Memberships starting at \\$2.50/m!](#)**

**Follow me  
on Twitter!**

@ConvertingColor