

# Converting Colors

Hex(C97B76)

Have a look what the booklet for  
Hex(C97B76) contains.

<b>Hex(C97B76)</b> .....	3
<b><i>Conversions</i></b> .....	4
<b><i>Details</i></b> .....	6
<b><i>Harmonies</i></b> .....	11
<b><i>Previews</i></b> .....	23
<b><i>Color Blindness Simulation</i></b> .....	26
<b><i>CSS Examples</i></b> .....	29

**Color**

**Hex(C97B76)**

# Conversions

## Conversions Part 1

<b>Format</b>	<b>Color</b>
Hex	C97B76
RGB	201, 123, 118
RGB Percent	79%, 48%, 46%
CMY	0.2118, 0.5176, 0.5373
CMYK	0.00, 0.39, 0.41, 0.21
HSL	4°, 43%, 63%
HSV	4°, 41%, 79%
XYZ	34.4404, 27.8914, 20.7079
YIQ	145.7520, 48.0930, 14.9810

# Conversions

## Conversions Part 2

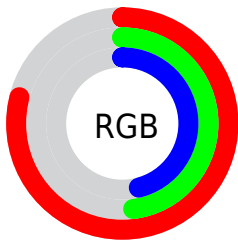
<b>Format</b>	<b>Color</b>
<b>RYB</b>	201, 123, 118
Decimal	13204342
CIELab	59.79, 29.78, 15.66
CIElCh	60, 33.644, 27.736
Yxy	27.8914, 0.4147, 0.3359
Android (android.graphics.Color)	4291394422 (0xFFC97B76)
YUV	145.7520, -13.6817, 48.4525
Hunter-Lab	52.8123, 23.9831, 13.7208

# Details

The Hex color **C97B76** is a dark color, and the websafe version is hex **CC6666**. A complement of this color would be **76C4C9**, and the grayscale version is **929292**.

A 20% lighter version of the original color is **FFB0AA**, and **904946** is the 20% darker color. If you saturate the color by 10%, you get **C96862**, and if you desaturate by 10%, it is **C98E8A**.

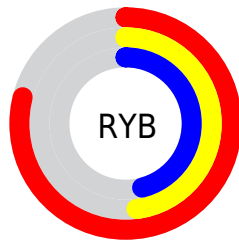
# Distribution



Red (79%)

Green (48%)

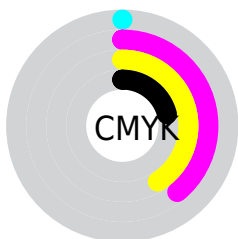
Blue (46%)



Red (79%)

Yellow (48%)

Blue (46%)

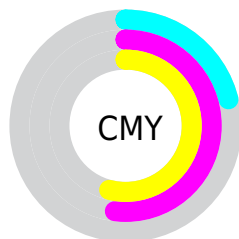


Cyan (0%)

Magenta (39%)

Yellow (41%)

Black (21%)



Cyan (21%)

Magenta (52%)

Yellow (54%)

# Brightness & Saturation Gradients

These gradients show how the Hex color C97B76 changes by changing the brightness by 10 percent. The first figure shows a shift by +10% for each color and the second figure -10%.

Similar to the brightness gradients but the following saturation gradients show a change of the Hex color C97B76 by changing the saturation by 10% instead.



 C97B76

 C97B76

FFFFFF

 AC615D

 FF00AA

 904946

 FFCC55

 75312F

 FFE9E1

 5A191B

FFFFFFE

 400000

 2A0001

 000000

 C97B76

 C97B76

 C96862

 C98E8A

 C9554E

 C9A19E

 C9423A

 C9B4B2

 C92F26

 C9C7C6

 C91D12

 C9D9DB

 C90C00

 C9ECEF

 C9FFFF

# Harmonies

## Analogous

The Analogous color harmony consists of three colors that are next to each other on the color wheel.



C67993



C97B76



BD835F

# Triad

The Triadic color harmony groups three colors that are evenly spaced from another and form a triangle on the color wheel.



C97B76



649D6F



6194CB

# Complementary

The Complementary color scheme is a pair of colors which are on the opposite of each other on the color wheel.



C97B76



76C4C9

# Split Complementary

Split-complementary colors differ from the complementary color scheme. The scheme consists of three colors, the original color and two neighbors of the complement color.



2A9BC1



C97B76



3CA08D

# Square

The Square scheme is like the rectangle color scheme, but the four colors are evenly spaced on the color wheel.



C97B76



87975B



0C9FAB



9089C4

# Rectangle

The Rectangle color scheme consists of four colors that form a rectangle on the color wheel.



C97B76



AE8A56



0C9FAB



4F97C9

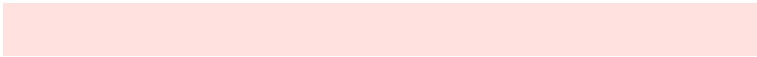


# Sweetspot

The Sweet Spot groups the original color and five complimentary colors.



C97B76



FFE2E0



C976C5



806F6E



000000



808080



# Same Dimension

The Same Dimension uses a secret algorithm to generate beautiful new colors.



C97B76



FF8780



C9A476



635A5A



A30A00



240200



# Inverse Universe

The Inverse Universe completely reimagines the original color for something new.



76C4C9



80F7FF



769BC9



5A6363



0099A3

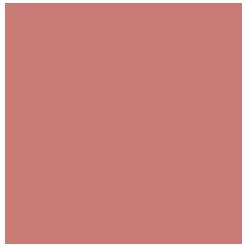


002224



# Previews

## White Background



This preview shows how the Hex color C97B76 looks on a white background.

## Color Contrast Check

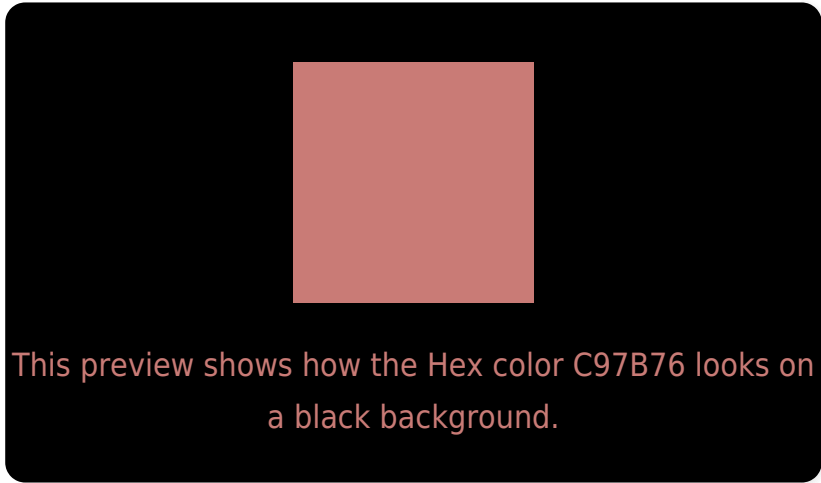
Large Text (above 18pt) WCAG AA ✓ Pass

Any Text WCAG AA × Fail

Large Text (above 18pt) WCAG AAA × Fail

Any Text WCAG AAA × Fail

# Black Background



## Color Contrast Check

Large Text (above 18pt) WCAG AA ✓ Pass

Any Text WCAG AA ✓ Pass

Large Text (above 18pt) WCAG AAA ✓ Pass

Any Text WCAG AAA × Fail

If you want to check with other color combinations, try the [Color Contrast Checker](#).



## Hex C97B76 Background



This preview shows how black text looks on a background with the Hex color C97B76.



This preview shows how white text looks on a background with the Hex color C97B76.

# Color Blindness Simulation

Color vision deficiency is a very complex topic, and I could not describe the different causes any better than Wikipedia does, so if you want to learn more, you should check out their [article about color blindness](#).

## Dichromacy





**Tritanopia**  
CA7982

# Trichromacy



**Original Color**  
C97B76

**Protanomaly**  
A9887C

**Deuteranomaly**  
B48574

**Tritanomaly**  
CA7A7E

# Monochromacy



**Original Color**  
C97B76

**Achromatopsia**  
929292

**Achromatomaly**  
A68A88

# CSS Examples

## Text

The CSS property to change the color of the text to Hex C97B76 is called "color". The color property can be set on classes, ids or directly on the HTML element.

This example shows how text in the color #C97B76 looks like.

```
.text, #text, p{  
    color:#C97B76  
}
```

If you want to add a text shadow in that color use the text-shadow property, you can generate a text shadow directly with our [CSS Text Shadow Generator](#).

Here you see how black text with a 4 pixel #C97B76 colored shadow looks like.

```
.shadow{ text-shadow: 4px 4px 2px #C97B76
}
```

## Border

The CSS property to change the border of an element to Hex C97B76 is called "border". The border property can be set on classes, ids or directly on the HTML element.

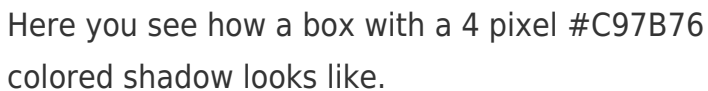
This example shows the color as border, it can be applied via the CSS property "border" or "border-color".

```
.border, #border, table{ border:4px solid
#C97B76 }
```

If only the border color should be changed use the property `border-color`.

```
.border{ border-color:#C97B76 }
```

If you want to add a box shadow in that color use:



Here you see how a box with a 4 pixel #C97B76 colored shadow looks like.

```
.boxshadow{ -moz-box-shadow:4px 4px 4px  
4px #C97B76; -webkit-box-shadow:4px 4px  
4px 4px #C97B76; box-shadow:4px 4px 4px  
4px #C97B76 }
```

# Background

The CSS property to change the background color of an element to Hex C97B76 is called "background". The background property can be set on classes, ids or directly on the HTML element.

```
.background, #background, body{  
background:#C97B76 }
```

If only the background color should be changed can be used:

```
.background{ background-color:#C97B76 }
```

This example shows the color as background, it is applied via the CSS property "background".

To optimize and compress your CSS code, you can use our [online CSS compressor and optimizer](#) based on csstidy. If you want to create a linear or radial gradient as background or border, check our [CSS Gradient Generator](#).



Hey! You found this booklet interesting? Support Converting Colors with the new Membership Option!

The pro membership hides all ads, plus gives you double the colors in the color bucket, and more awesome pro features!

**[Learn more, Memberships starting at \\$2.50/m!](#)**

**Follow me  
on Twitter!**

@ConvertingColor