

# Converting Colors

Hex(C97C78)

Have a look what the booklet for  
Hex(C97C78) contains.

<b>Hex(C97C78)</b> .....	3
<b><i>Conversions</i></b> .....	4
<b><i>Details</i></b> .....	6
<b><i>Harmonies</i></b> .....	11
<b><i>Previews</i></b> .....	23
<b><i>Color Blindness Simulation</i></b> .....	26
<b><i>CSS Examples</i></b> .....	29

**Color**

**Hex(C97C78)**

# Conversions

## Conversions Part 1

<b>Format</b>	<b>Color</b>
Hex	C97C78
RGB	201, 124, 120
RGB Percent	79%, 49%, 47%
CMY	0.2118, 0.5137, 0.5294
CMYK	0.00, 0.38, 0.40, 0.21
HSL	3°, 43%, 63%
HSV	3°, 40%, 79%
XYZ	34.6852, 28.1889, 21.3822
YIQ	146.5670, 47.1760, 15.0800

# Conversions

## Conversions Part 2

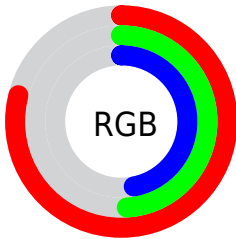
<b>Format</b>	<b>Color</b>
<b>R<sub>YB</sub></b>	201, 124, 120
Decimal	13204600
CIE <sub>Lab</sub>	60.06, 29.46, 14.89
CIE <sub>LCh</sub>	60, 33.011, 26.804
Yxy	28.1889, 0.4117, 0.3346
Android (android.graphics.Color)	4291394680 (0xFFC97C78)
YUV	146.5670, -13.0975, 47.7377
Hunter-Lab	53.0932, 23.6990, 13.2874

# Details

The Hex color **C97C78** is a dark color, and the websafe version is hex **CC6666**. A complement of this color would be **78C5C9**, and the grayscale version is **939393**.

A 20% lighter version of the original color is **FFB1AC**, and **904A48** is the 20% darker color. If you saturate the color by 10%, you get **C96964**, and if you desaturate by 10%, it is **C98F8C**.

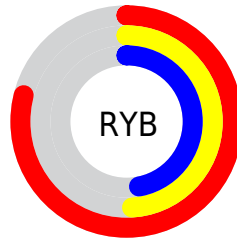
# Distribution



Red (79%)

Green (49%)

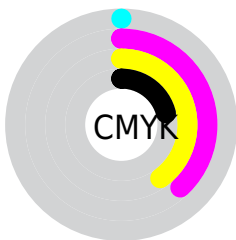
Blue (47%)



Red (79%)

Yellow (49%)

Blue (47%)

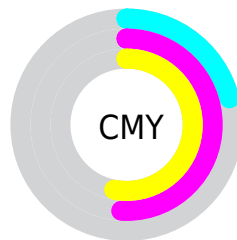


Cyan (0%)

Magenta (38%)

Yellow (40%)

Black (21%)



Cyan (21%)

Magenta (51%)

Yellow (53%)

# Brightness & Saturation Gradients

These gradients show how the Hex color C97C78 changes by changing the brightness by 10 percent. The first figure shows a shift by +10% for each color and the second figure -10%.

Similar to the brightness gradients but the following saturation gradients show a change of the Hex color C97C78 by changing the saturation by 10% instead.



 C97C78

 C97C78

FFFFFF

 AC625F

 FFB1AC

 904A48

 FFCDC8

 753231

 FFEAE4

 5A1A1C

 400102

 2A0001

 000000

 C97C78

 C97C78

 C96964

 C98F8C

 C95650

 C9A2A0

 C9433C

 C9B5B4

 C93028

 C9C8C8

 C91C14

 C9DCDD

 C90A00

 C9EFF1

 C9FFFF

# Harmonies

## Analogous

The Analogous color harmony consists of three colors that are next to each other on the color wheel.



C67A95



C97C78



BD8461

# Triad

The Triadic color harmony groups three colors that are evenly spaced from another and form a triangle on the color wheel.



C97C78



679D70



6195CA

# Complementary

The Complementary color scheme is a pair of colors which are on the opposite of each other on the color wheel.



C97C78



78C5C9

# Split Complementary

Split-complementary colors differ from the complementary color scheme. The scheme consists of three colors, the original color and two neighbors of the complement color.



2E9CC1



C97C78



40A08D

# Square

The Square scheme is like the rectangle color scheme, but the four colors are evenly spaced on the color wheel.



C97C78



89975C



19A0AA



908AC5

# Rectangle

The Rectangle color scheme consists of four colors that form a rectangle on the color wheel.



C97C78



AF8B58



19A0AA



5097C9

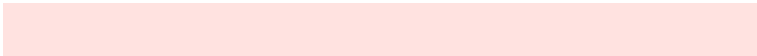


# Sweetspot

The Sweet Spot groups the original color and five complimentary colors.



C97C78



FFE2E0



C978C6



806F6E



000000



808080



# Same Dimension

The Same Dimension uses a secret algorithm to generate beautiful new colors.



C97C78



FF8B85



C9A378



635A5A



A30800



240200



# Inverse Universe

The Inverse Universe completely reimagines the original color for something new.



78C5C9



85F9FF



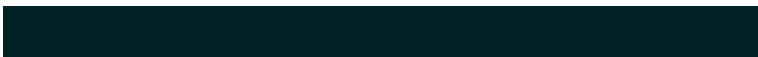
789EC9



5A6363



009BA3

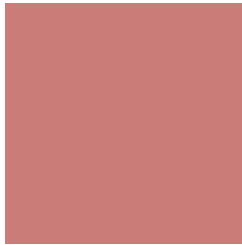


002224



# Previews

## White Background



This preview shows how the Hex color C97C78 looks on a white background.

## Color Contrast Check

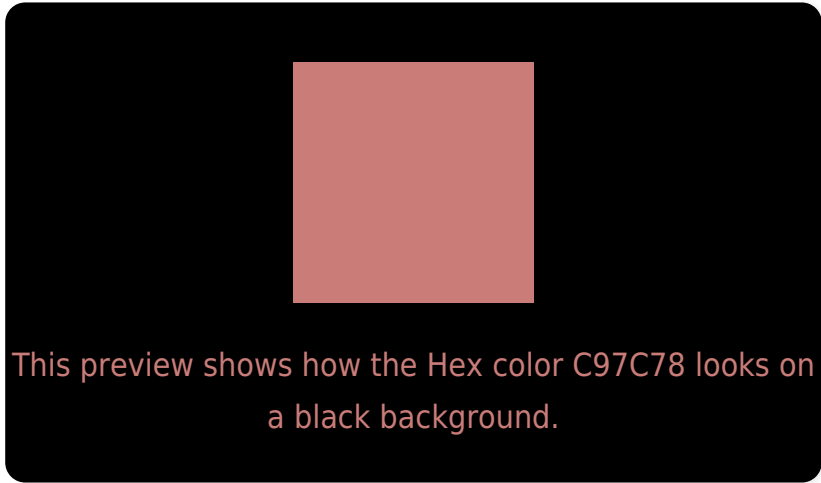
Large Text (above 18pt) WCAG AA ✓ Pass

Any Text WCAG AA × Fail

Large Text (above 18pt) WCAG AAA × Fail

Any Text WCAG AAA × Fail

# Black Background



## Color Contrast Check

Large Text (above 18pt) WCAG AA ✓ Pass

Any Text WCAG AA ✓ Pass

Large Text (above 18pt) WCAG AAA ✓ Pass

Any Text WCAG AAA × Fail

If you want to check with other color combinations, try the [Color Contrast Checker](#).



## Hex C97C78 Background



This preview shows how black text looks on a background with the Hex color C97C78.

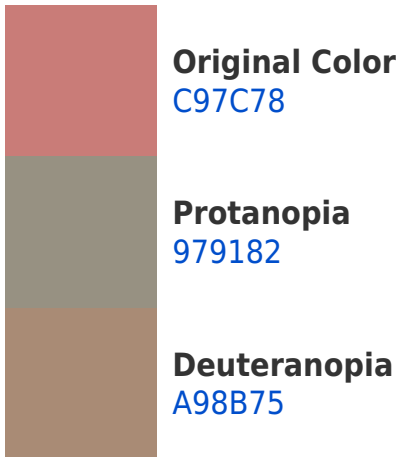



This preview shows how white text looks on a background with the Hex color C97C78.

# Color Blindness Simulation

Color vision deficiency is a very complex topic, and I could not describe the different causes any better than Wikipedia does, so if you want to learn more, you should check out their [article about color blindness](#).

## Dichromacy





**Tritanopia**  
CA7A83

# Trichromacy



**Original Color**  
C97C78

**Protanomaly**  
A9897E

**Deuteranomaly**  
B58676

**Tritanomaly**  
CA7B7F

# Monochromacy



**Original Color**  
C97C78

**Achromatopsia**  
939393

**Achromatomaly**  
A78B89

# CSS Examples

## Text

The CSS property to change the color of the text to Hex C97C78 is called "color". The color property can be set on classes, ids or directly on the HTML element.

This example shows how text in the color #C97C78 looks like.

```
.text, #text, p{  
    color:#C97C78  
}
```

If you want to add a text shadow in that color use the text-shadow property, you can generate a text shadow directly with our [CSS Text Shadow Generator](#).

Here you see how black text with a 4 pixel #C97C78 colored shadow looks like.

```
.shadow{ text-shadow: 4px 4px 2px #C97C78
}
```

## Border

The CSS property to change the border of an element to Hex C97C78 is called "border". The border property can be set on classes, ids or directly on the HTML element.

This example shows the color as border, it can be applied via the CSS property "border" or "border-color".

```
.border, #border, table{ border:4px solid
#C97C78 }
```

If only the border color should be changed use the property `border-color`.

```
.border{ border-color:#C97C78 }
```

If you want to add a box shadow in that color use:

Here you see how a box with a 4 pixel #C97C78 colored shadow looks like.

```
.boxshadow{ -moz-box-shadow:4px 4px 4px  
4px #C97C78; -webkit-box-shadow:4px 4px  
4px 4px #C97C78; box-shadow:4px 4px 4px  
4px #C97C78 }
```

# Background

The CSS property to change the background color of an element to Hex C97C78 is called "background". The background property can be set on classes, ids or directly on the HTML element.

```
.background, #background, body{  
background:#C97C78 }
```

If only the background color should be changed can be used:

```
.background{ background-color:#C97C78 }
```

This example shows the color as background, it is applied via the CSS property "background".

To optimize and compress your CSS code, you can use our [online CSS compressor and optimizer](#) based on csstidy. If you want to create a linear or radial gradient as background or border, check our [CSS Gradient Generator](#).



Hey! You found this booklet interesting? Support Converting Colors with the new Membership Option!

The pro membership hides all ads, plus gives you double the colors in the color bucket, and more awesome pro features!

**[Learn more, Memberships starting at \\$2.50/m!](#)**

**Follow me  
on Twitter!**

@ConvertingColor