

Converting Colors

Hex(C98184)

Have a look what the booklet for
Hex(C98184) contains.

Hex(C98184)	3
<i>Conversions</i>	4
<i>Details</i>	6
<i>Harmonies</i>	11
<i>Previews</i>	23
<i>Color Blindness Simulation</i>	26
<i>CSS Examples</i>	29

Color

Hex(C98184)

Conversions

Conversions Part 1

Format	Color
Hex	C98184
RGB	201, 129, 132
RGB Percent	79%, 51%, 52%
CMY	0.2118, 0.4941, 0.4824
CMYK	0.00, 0.36, 0.34, 0.21
HSL	358°, 40%, 65%
HSV	358°, 36%, 79%
XYZ	36.1025, 29.7840, 25.6759
YIQ	150.8700, 41.9490, 16.1970

Conversions

Conversions Part 2

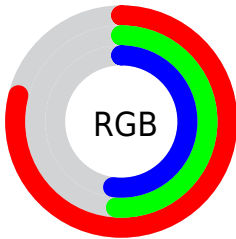
Format	Color
R _Y B	201, 129, 132
Decimal	13205892
CIE Lab	61.47, 28.20, 10.00
CIE LCh	61, 29.917, 19.532
Yxy	29.7840, 0.3943, 0.3253
Android (android.graphics.Color)	4291395972 (0xFFC98184)
YUV	150.8700, -9.3029, 43.9640
Hunter-Lab	54.5747, 22.5765, 10.3080

Details

The Hex color **C98184** is a light color, and the websafe version is hex **CC9999**. A complement of this color would be **81C9C6**, and the grayscale version is **979797**.

A 20% lighter version of the original color is **FFB7B9**, and **914F53** is the 20% darker color. If you saturate the color by 10%, you get **C96D71**, and if you desaturate by 10%, it is **C99597**.

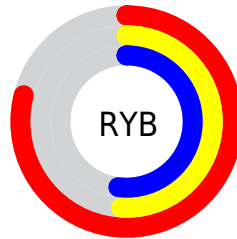
Distribution



Red (79%)

Green (51%)

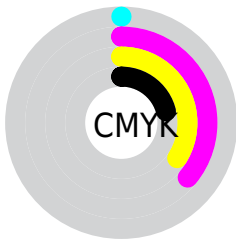
Blue (52%)



Red (79%)

Yellow (51%)

Blue (52%)

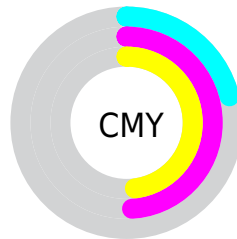


Cyan (0%)

Magenta (36%)

Yellow (34%)

Black (21%)



Cyan (21%)

Magenta (49%)

Yellow (48%)

Brightness & Saturation Gradients

These gradients show how the Hex color C98184 changes by changing the brightness by 10 percent. The first figure shows a shift by +10% for each color and the second figure -10%.

Similar to the brightness gradients but the following saturation gradients show a change of the Hex color C98184 by changing the saturation by 10% instead.

 C98184

 C98184

FFFFFF

 AD676B

 FFB7B9

 914F53

 FFD2D5

 76373C

 FFEFF1

 5B1F26

 420712

 2C0000

 000000

 C98184

 C98184

 C96D71

 C99597

 C9595D

 C9A9AB

 C9454A

 C9BDBE

 C93137

 C9D1D1

 C91D24

 C9E6E4

 C90810

 C9FAF8

 C90008

 C9FFFF

Harmonies

Analogous

The Analogous color harmony consists of three colors that are next to each other on the color wheel.



C2819F



C98184



C2876D

Triad

The Triadic color harmony groups three colors that are evenly spaced from another and form a triangle on the color wheel.



C98184



779F71



629AC8

Complementary

The Complementary color scheme is a pair of colors which are on the opposite of each other on the color wheel.



C98184



81C9C6

Split Complementary

Split-complementary colors differ from the complementary color scheme. The scheme consists of three colors, the original color and two neighbors of the complement color.



3FA0BC



C98184



57A28A

Square

The Square scheme is like the rectangle color scheme, but the four colors are evenly spaced on the color wheel.



C98184



959862



3CA3A5



8B91C6

Rectangle

The Rectangle color scheme consists of four colors that form a rectangle on the color wheel.



C98184



B68D63



3CA3A5



549CC5

Sweetspot

The Sweet Spot groups the original color and five complimentary colors.



C98184



FFE3E4



C581C9



806F70



000000



808080

Same Dimension

The Same Dimension uses a secret algorithm to generate beautiful new colors.



C98184



FF9196



C9A181



635A5A



A30007



240001

Inverse Universe

The Inverse Universe completely reimagines the original color for something new.



C98184



FF9196



81A9C9



635A5A



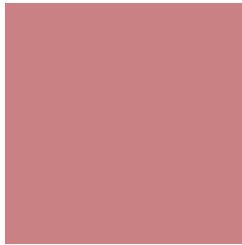
A30007



240001

Previews

White Background



This preview shows how the Hex color C98184 looks on a white background.

Color Contrast Check

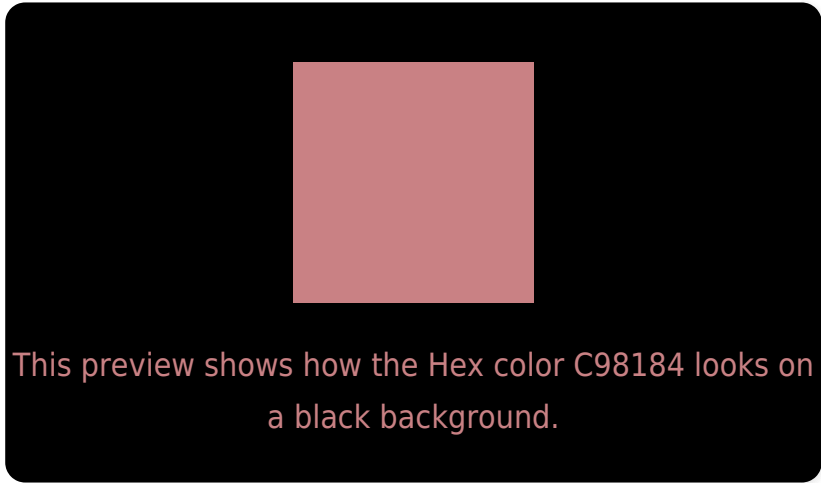
Large Text (above 18pt) WCAG AA ✓ Pass

Any Text WCAG AA × Fail

Large Text (above 18pt) WCAG AAA × Fail

Any Text WCAG AAA × Fail

Black Background



Color Contrast Check

Large Text (above 18pt) WCAG AA ✓ Pass

Any Text WCAG AA ✓ Pass

Large Text (above 18pt) WCAG AAA ✓ Pass

Any Text WCAG AAA × Fail

If you want to check with other color combinations, try the [Color Contrast Checker](#).

Hex C98184 Background



This preview shows how black text looks on a background with the Hex color C98184.

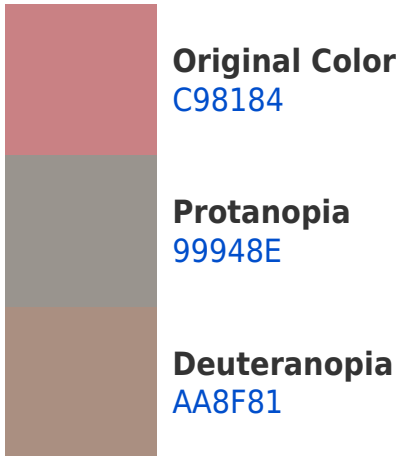


This preview shows how white text looks on a background with the Hex color C98184.

Color Blindness Simulation

Color vision deficiency is a very complex topic, and I could not describe the different causes any better than Wikipedia does, so if you want to learn more, you should check out their [article about color blindness](#).

Dichromacy



Trichromacy



Original Color
C98184

Protanomaly
AA8D8A

Deuteranomaly
B58A82

Tritanomaly
CA8088

Monochromacy



Original Color
C98184

Achromatopsia
979797

Achromatomaly
A98F90

CSS Examples

Text

The CSS property to change the color of the text to Hex C98184 is called "color". The color property can be set on classes, ids or directly on the HTML element.

This example shows how text in the color #C98184 looks like.

```
.text, #text, p{  
    color:#C98184  
}
```

If you want to add a text shadow in that color use the text-shadow property, you can generate a text shadow directly with our [CSS Text Shadow Generator](#).

Here you see how black text with a 4 pixel #C98184 colored shadow looks like.

```
.shadow{ text-shadow: 4px 4px 2px #C98184
}
```

Border

The CSS property to change the border of an element to Hex C98184 is called "border". The border property can be set on classes, ids or directly on the HTML element.

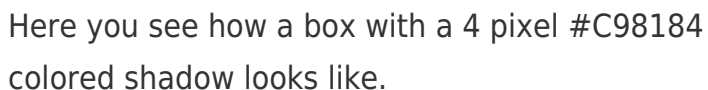
This example shows the color as border, it can be applied via the CSS property "border" or "border-color".

```
.border, #border, table{ border:4px solid
#C98184 }
```

If only the border color should be changed use the property `border-color`.

```
.border{ border-color:#C98184 }
```

If you want to add a box shadow in that color use:



Here you see how a box with a 4 pixel `#C98184` colored shadow looks like.

```
.boxshadow{ -moz-box-shadow:4px 4px 4px  
4px #C98184; -webkit-box-shadow:4px 4px  
4px 4px #C98184; box-shadow:4px 4px 4px  
4px #C98184 }
```

Background

The CSS property to change the background color of an element to Hex C98184 is called "background". The background property can be set on classes, ids or directly on the HTML element.

```
.background, #background, body{  
background:#C98184 }
```

If only the background color should be changed can be used:

```
.background{ background-color:#C98184 }
```

This example shows the color as background, it is applied via the CSS property "background".

To optimize and compress your CSS code, you can use our [online CSS compressor and optimizer](#) based on csstidy. If you want to create a linear or radial gradient as background or border, check our [CSS Gradient Generator](#).

Hey! You found this booklet interesting? Support Converting Colors with the new Membership Option!

The pro membership hides all ads, plus gives you double the colors in the color bucket, and more awesome pro features!

[Learn more, Memberships starting at \\$2.50/m!](#)

**Follow me
on Twitter!**

@ConvertingColor