

# Converting Colors

Hex(C99187)

Have a look what the booklet for  
Hex(C99187) contains.

<b>Hex(C99187)</b> .....	3
<b><i>Conversions</i></b> .....	4
<b><i>Details</i></b> .....	6
<b><i>Harmonies</i></b> .....	11
<b><i>Previews</i></b> .....	23
<b><i>Color Blindness Simulation</i></b> .....	26
<b><i>CSS Examples</i></b> .....	29

# **Color**

**Hex(C99187)**

# Conversions

## Conversions Part 1

Format	Color
Hex	C99187
RGB	201, 145, 135
RGB Percent	79%, 57%, 53%
CMY	0.2118, 0.4314, 0.4706
CMYK	0.00, 0.28, 0.33, 0.21
HSL	9°, 38%, 66%
HSV	9°, 33%, 79%
XYZ	38.5860, 34.4176, 27.5312
YIQ	160.6040, 36.5860, 8.7620

# Conversions

## Conversions Part 2

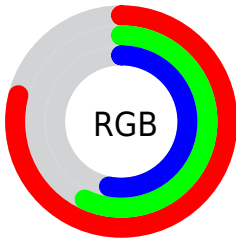
Format	Color
R <sub>Y</sub> B	201, 147, 135
Decimal	13209991
CIE Lab	65.29, 19.83, 13.69
CIE LCh	65, 24.094, 34.625
Yxy	34.4176, 0.3838, 0.3423
Android (android.graphics.Color)	4291400071 (0xFFC99187)
YUV	160.6040, -12.6228, 35.4273
Hunter-Lab	58.6665, 14.7362, 13.2427

# Details

The Hex color **C99187** is a light color, and the websafe version is hex **CC9999**. A complement of this color would be **87BFC9**, and the grayscale version is **A1A1A1**.

A 20% lighter version of the original color is **FFC7BC**, and **915E55** is the 20% darker color. If you saturate the color by 10%, you get **C98073**, and if you desaturate by 10%, it is **C9A29B**.

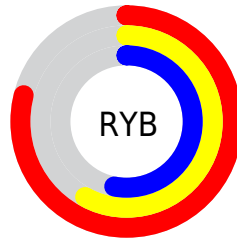
# Distribution



Red (79%)

Green (57%)

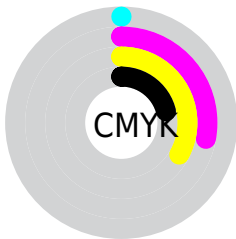
Blue (53%)



Red (79%)

Yellow (58%)

Blue (53%)

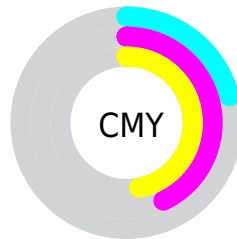


Cyan (0%)

Magenta (28%)

Yellow (33%)

Black (21%)



Cyan (21%)

Magenta (43%)

Yellow (47%)

# Brightness & Saturation Gradients

These gradients show how the Hex color C99187 changes by changing the brightness by 10 percent. The first figure shows a shift by +10% for each color and the second figure -10%.

Similar to the brightness gradients but the following saturation gradients show a change of the Hex color C99187 by changing the saturation by 10% instead.



 C99187

 C99187

FFFFFF

 AD776E

 FFC7BC

 915E55

 FFE3D8

 77463E

 FFFFF4

 5D2F28

 431914

 2C0200

 000000

 C99187

 C99187

 C98073

 C9A29B

 C96F5F

 C9B3AF

 C95E4B

 C9C4C3

 C94D37

 C9D5D7

 C93C23

 C9E6EC

 C92B0E

 C9F7FF

 C91E00

 C9FFFF

# Harmonies

## Analogous

The Analogous color harmony consists of three colors that are next to each other on the color wheel.



C98F9C



C99187



BE9778

# Triad

The Triadic color harmony groups three colors that are evenly spaced from another and form a triangle on the color wheel.



C99187



7BA98B



899FC9

# Complementary

The Complementary color scheme is a pair of colors which are on the opposite of each other on the color wheel.



C99187



87BFC9

# Split Complementary

Split-complementary colors differ from the complementary color scheme. The scheme consists of three colors, the original color and two neighbors of the complement color.



6DA6C5



C99187



66ABA1

# Square

The Square scheme is like the rectangle color scheme, but the four colors are evenly spaced on the color wheel.



C99187



93A57B



5FAAB6



A698C2

# Rectangle

The Rectangle color scheme consists of four colors that form a rectangle on the color wheel.



C99187



B29C74



5FAAB6



7FA2C9



# Sweetspot

The Sweet Spot groups the original color and five complimentary colors.



C99187



FFE9E6



C987BF



807370



000000



808080



# Same Dimension

The Same Dimension uses a secret algorithm to generate beautiful new colors.



C99187



FFAB9C



C9B287



635B5A



A31900



240500

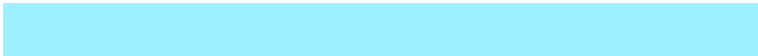


# Inverse Universe

The Inverse Universe completely reimagines the original color for something new.



87BFC9



9CF0FF



879EC9



5A6263



008AA3

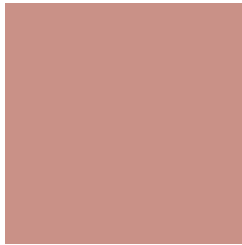


001E24



# Previews

## White Background



This preview shows how the Hex color C99187 looks on a white background.

## Color Contrast Check

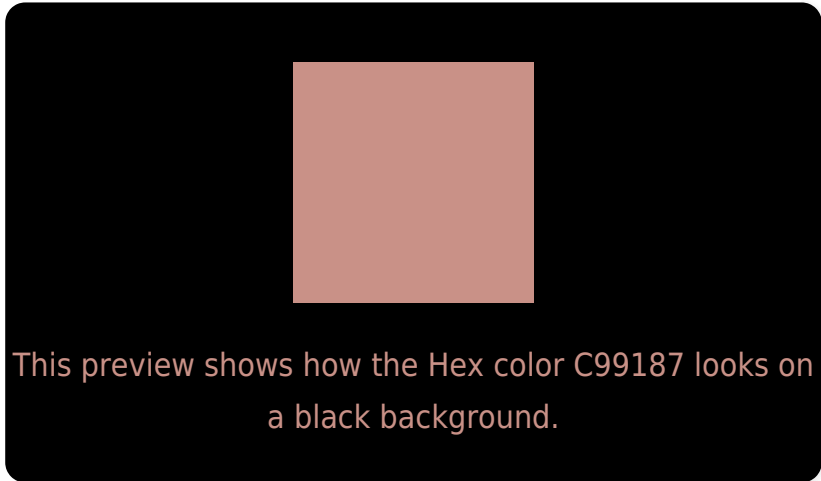
Large Text (above 18pt) WCAG AA × Fail

Any Text WCAG AA × Fail

Large Text (above 18pt) WCAG AAA × Fail

Any Text WCAG AAA × Fail

# Black Background



## Color Contrast Check

Large Text (above 18pt) WCAG AA ✓ Pass

Any Text WCAG AA ✓ Pass

Large Text (above 18pt) WCAG AAA ✓ Pass

Any Text WCAG AAA ✓ Pass

If you want to check with other color combinations, try the [Color Contrast Checker](#).



## Hex C99187 Background



This preview shows how black text looks on a background with the Hex color C99187.




This preview shows how white text looks on a background with the Hex color C99187.

# Color Blindness Simulation

Color vision deficiency is a very complex topic, and I could not describe the different causes any better than Wikipedia does, so if you want to learn more, you should check out their [article about color blindness](#).

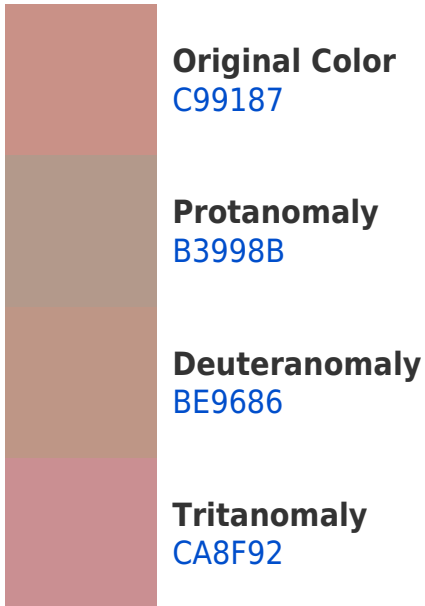
## Dichromacy



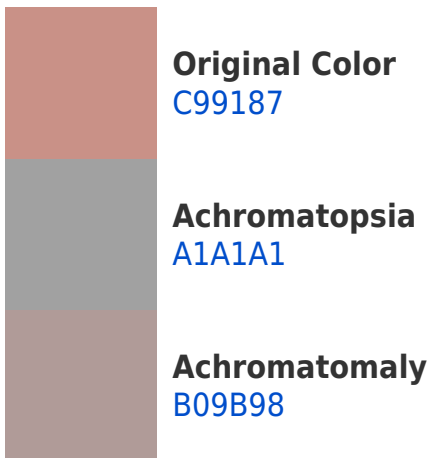


**Tritanopia**  
CB8E99

# Trichromacy



# Monochromacy



# CSS Examples

## Text

The CSS property to change the color of the text to Hex C99187 is called "color". The color property can be set on classes, ids or directly on the HTML element.

This example shows how text in the color #C99187 looks like.

```
.text, #text, p{  
    color:#C99187  
}
```

If you want to add a text shadow in that color use the text-shadow property, you can generate a text shadow directly with our [CSS Text Shadow Generator](#).

Here you see how black text with a 4 pixel #C99187 colored shadow looks like.

```
.shadow{ text-shadow: 4px 4px 2px #C99187
}
```

## Border

The CSS property to change the border of an element to Hex C99187 is called "border". The border property can be set on classes, ids or directly on the HTML element.

This example shows the color as border, it can be applied via the CSS property "border" or "border-color".

```
.border, #border, table{ border:4px solid
#C99187 }
```

If only the border color should be changed use the property `border-color`.

```
.border{ border-color:#C99187 }
```

If you want to add a box shadow in that color use:

Here you see how a box with a 4 pixel #C99187 colored shadow looks like.

```
.boxshadow{ -moz-box-shadow:4px 4px 4px  
4px #C99187; -webkit-box-shadow:4px 4px  
4px 4px #C99187; box-shadow:4px 4px 4px  
4px #C99187 }
```

# Background

The CSS property to change the background color of an element to Hex C99187 is called "background". The background property can be set on classes, ids or directly on the HTML element.

```
.background, #background, body{  
background:#C99187 }
```

If only the background color should be changed can be used:

```
.background{ background-color:#C99187 }
```

This example shows the color as background, it is applied via the CSS property "background".

To optimize and compress your CSS code, you can use our [online CSS compressor and optimizer](#) based on csstidy. If you want to create a linear or radial gradient as background or border, check our [CSS Gradient Generator](#).



Hey! You found this booklet interesting? Support Converting Colors with the new Membership Option!

The pro membership hides all ads, plus gives you double the colors in the color bucket, and more awesome pro features!

**[Learn more, Memberships starting at \\$2.50/m!](#)**

**Follow me  
on Twitter!**

@ConvertingColor