

Converting Colors

Hex(C99492)

Have a look what the booklet for
Hex(C99492) contains.

Hex(C99492)	3
<i>Conversions</i>	4
<i>Details</i>	6
<i>Harmonies</i>	11
<i>Previews</i>	23
<i>Color Blindness Simulation</i>	26
<i>CSS Examples</i>	29

Color

Hex(C99492)

Conversions

Conversions Part 1

Format	Color
Hex	C99492
RGB	201, 148, 146
RGB Percent	79%, 58%, 57%
CMY	0.2118, 0.4196, 0.4275
CMYK	0.00, 0.26, 0.27, 0.21
HSL	2°, 34%, 68%
HSV	2°, 27%, 79%
XYZ	39.8656, 35.6726, 31.9785
YIQ	163.6190, 32.2300, 10.6140

Conversions

Conversions Part 2

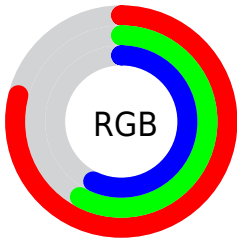
Format	Color
R_{YB}	201, 148, 146
Decimal	13210770
CIE _{Lab}	66.27, 19.67, 8.90
CIE _{LCh}	66, 21.587, 24.352
Yxy	35.6726, 0.3708, 0.3318
Android (android.graphics.Color)	4291400850 (0xFFC99492)
YUV	163.6190, -8.6862, 32.7831
Hunter-Lab	59.7266, 14.6216, 10.0639

Details

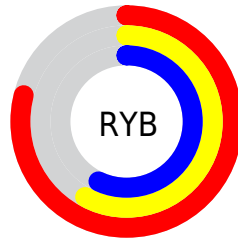
The Hex color **C99492** is a light color, and the websafe version is hex **CC9999**. A complement of this color would be **92C7C9**, and the grayscale version is **A4A4A4**.

A 20% lighter version of the original color is **FFCAC8**, and **926160** is the 20% darker color. If you saturate the color by 10%, you get **C9817E**, and if you desaturate by 10%, it is **C9A7A6**.

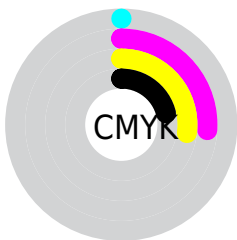
Distribution



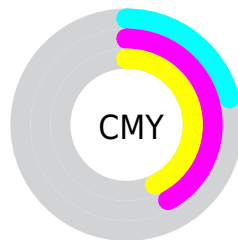
- Red (79%)
- Green (58%)
- Blue (57%)



- Red (79%)
- Yellow (58%)
- Blue (57%)



- Cyan (0%)
- Magenta (26%)
- Yellow (27%)
- Black (21%)



- Cyan (21%)
- Magenta (42%)
- Yellow (43%)

Brightness & Saturation Gradients

These gradients show how the Hex color C99492 changes by changing the brightness by 10 percent. The first figure shows a shift by +10% for each color and the second figure -10%.

Similar to the brightness gradients but the following saturation gradients show a change of the Hex color C99492 by changing the saturation by 10% instead.

 C99492

 C99492

FFFFFF

 AD7A78

 FFCAC8

 926160

 FFE7E4

 774948

 5D3231

 441C1D

 2E0602

 090000

 000000

 C99492

 C99492

 C9817E

 C9A7A6

 C96D6A

 C9BBBA

 C95A56

 C9CECE

 C94742

 C9E1E2

 C9332E

 C9F5F7

 C92019

 C9FFFF

 C90C05

 C90700

Harmonies

Analogous

The Analogous color harmony consists of three colors that are next to each other on the color wheel.



C594A6



C99492



C29882

Triad

The Triadic color harmony groups three colors that are evenly spaced from another and form a triangle on the color wheel.



C99492



89A98A



85A4C7

Complementary

The Complementary color scheme is a pair of colors which are on the opposite of each other on the color wheel.



C99492



92C7C9

Split Complementary

Split-complementary colors differ from the complementary color scheme. The scheme consists of three colors, the original color and two neighbors of the complement color.



70A9C0



C99492



75AC9D

Square

The Square scheme is like the rectangle color scheme, but the four colors are evenly spaced on the color wheel.



C99492



9FA57E



6AACB0



A09DC4

Rectangle

The Rectangle color scheme consists of four colors that form a rectangle on the color wheel.



C99492



B99C7C



6AACB0



7DA6C6

Sweetspot

The Sweet Spot groups the original color and five complimentary colors.



C99492



FFEBE8



C992C7



807373



000000



808080

Same Dimension

The Same Dimension uses a secret algorithm to generate beautiful new colors.



C99492



FFAEAB



C9AF92



635A5A



A30600



240100

Inverse Universe

The Inverse Universe completely reimagines the original color for something new.



92C7C9



ABFCFF



92ACC9



5A6363



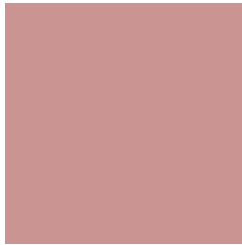
009DA3



002224

Previews

White Background



This preview shows how the Hex color C99492 looks on a white background.

Color Contrast Check

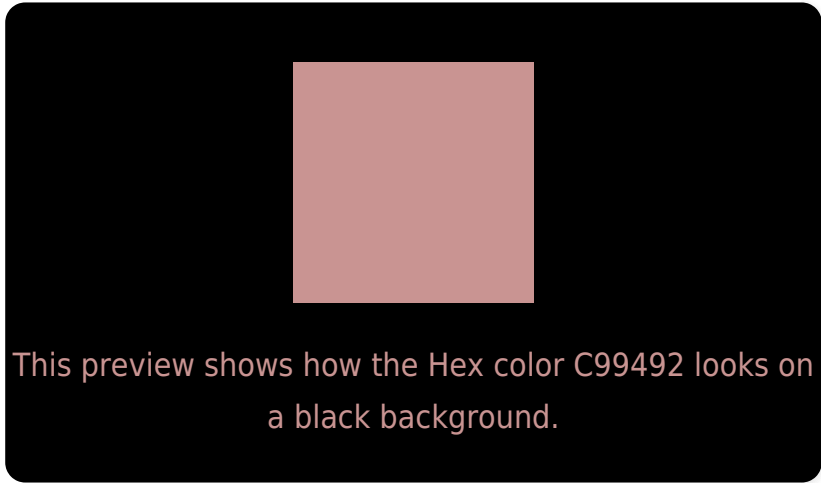
Large Text (above 18pt) WCAG AA × Fail

Any Text WCAG AA × Fail

Large Text (above 18pt) WCAG AAA × Fail

Any Text WCAG AAA × Fail

Black Background



Color Contrast Check

Large Text (above 18pt) WCAG AA ✓ Pass

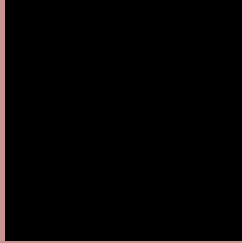
Any Text WCAG AA ✓ Pass

Large Text (above 18pt) WCAG AAA ✓ Pass

Any Text WCAG AAA ✓ Pass

If you want to check with other color combinations, try the [Color Contrast Checker](#).

Hex C99492 Background



This preview shows how black text looks on a background with the Hex color C99492.



This preview shows how white text looks on a background with the Hex color C99492.

Color Blindness Simulation

Color vision deficiency is a very complex topic, and I could not describe the different causes any better than Wikipedia does, so if you want to learn more, you should check out their [article about color blindness](#).


Dichromacy



Original Color
C99492

Protanopia
A6A199

Deuteranopia
B79C91



Tritanopia
CA929D

Trichromacy



Original Color
C99492

Protanomaly
B39C96

Deuteranomaly
BE9991

Tritanomaly
CA9399

Monochromacy



Original Color
C99492

Achromatopsia
A4A4A4

Achromatomaly
B19E9D

CSS Examples

Text

The CSS property to change the color of the text to Hex C99492 is called "color". The color property can be set on classes, ids or directly on the HTML element.

This example shows how text in the color #C99492 looks like.

```
.text, #text, p{  
    color:#C99492  
}
```

If you want to add a text shadow in that color use the text-shadow property, you can generate a text shadow directly with our [CSS Text Shadow Generator](#).

Here you see how black text with a 4 pixel #C99492 colored shadow looks like.

```
.shadow{ text-shadow: 4px 4px 2px #C99492
}
```

Border

The CSS property to change the border of an element to Hex C99492 is called "border". The border property can be set on classes, ids or directly on the HTML element.

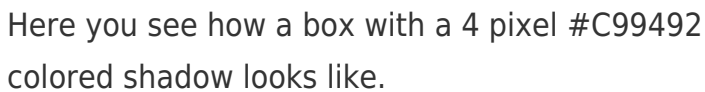
This example shows the color as border, it can be applied via the CSS property "border" or "border-color".

```
.border, #border, table{ border:4px solid
#C99492 }
```

If only the border color should be changed use the property `border-color`.

```
.border{ border-color:#C99492 }
```

If you want to add a box shadow in that color use:



Here you see how a box with a 4 pixel #C99492 colored shadow looks like.

```
.boxshadow{ -moz-box-shadow:4px 4px 4px  
4px #C99492; -webkit-box-shadow:4px 4px  
4px 4px #C99492; box-shadow:4px 4px 4px  
4px #C99492 }
```

Background

The CSS property to change the background color of an element to Hex C99492 is called "background". The background property can be set on classes, ids or directly on the HTML element.

```
.background, #background, body{  
background:#C99492 }
```

If only the background color should be changed can be used:

```
.background{ background-color:#C99492 }
```

This example shows the color as background, it is applied via the CSS property "background".

To optimize and compress your CSS code, you can use our [online CSS compressor and optimizer](#) based on csstidy. If you want to create a linear or radial gradient as background or border, check our [CSS Gradient Generator](#).

Hey! You found this booklet interesting? Support Converting Colors with the new Membership Option!

The pro membership hides all ads, plus gives you double the colors in the color bucket, and more awesome pro features!

[Learn more, Memberships starting at \\$2.50/m!](#)

**Follow me
on Twitter!**

@ConvertingColor