

Converting Colors

Hex(C99A99)

Have a look what the booklet for
Hex(C99A99) contains.

Hex(C99A99)	3
<i>Conversions</i>	4
<i>Details</i>	6
<i>Harmonies</i>	11
<i>Previews</i>	23
<i>Color Blindness Simulation</i>	26
<i>CSS Examples</i>	29

Color

Hex(C99A99)

Conversions

Conversions Part 1

Format	Color
Hex	C99A99
RGB	201, 154, 153
RGB Percent	79%, 60%, 60%
CMY	0.2118, 0.3961, 0.4000
CMYK	0.00, 0.23, 0.24, 0.21
HSL	1°, 31%, 69%
HSV	1°, 24%, 79%
XYZ	41.3928, 37.8286, 35.2570
YIQ	167.9390, 28.3330, 9.6530

Conversions

Conversions Part 2

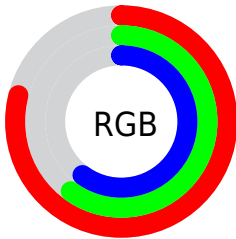
Format	Color
R_{YB}	201, 154, 153
Decimal	13212313
CIE _{Lab}	67.89, 17.38, 7.31
CIE _{LCh}	68, 18.855, 22.801
Yxy	37.8286, 0.3616, 0.3304
Android (android.graphics.Color)	4291402393 (0xFFC99A99)
YUV	167.9390, -7.3649, 28.9945
Hunter-Lab	61.5050, 12.4966, 9.0662

Details

The Hex color **C99A99** is a light color, and the websafe version is hex **CC9999**. A complement of this color would be **99C8C9**, and the grayscale version is **A8A8A8**.

A 20% lighter version of the original color is **FFD1CF**, and **926766** is the 20% darker color. If you saturate the color by 10%, you get **C98685**, and if you desaturate by 10%, it is **C9AEAD**.

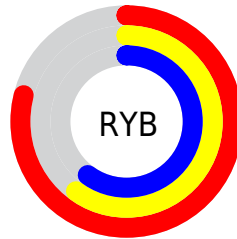
Distribution



Red (79%)

Green (60%)

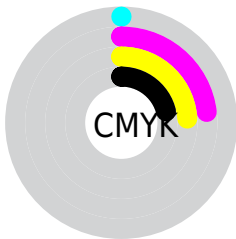
Blue (60%)



Red (79%)

Yellow (60%)

Blue (60%)

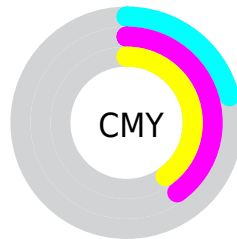


Cyan (0%)

Magenta (23%)

Yellow (24%)

Black (21%)



Cyan (21%)

Magenta (40%)

Yellow (40%)

Brightness & Saturation Gradients

These gradients show how the Hex color C99A99 changes by changing the brightness by 10 percent. The first figure shows a shift by +10% for each color and the second figure -10%.

Similar to the brightness gradients but the following saturation gradients show a change of the Hex color C99A99 by changing the saturation by 10% instead.

 C99A99

 C99A99

FFFFFF

 AD807F

 FFD1CF

 926766

 FFEDEB

 784E4E

 5E3737

 452122

 2E0C0C

 130000

 000000

 C99A99

 C99A99

 C98685

 C9AEAD

 C97371

 C9C1C1

 C95F5D

 C9D5D5

 C94B49

 C9E9E9

 C93835

 C9FCFE

 C92420

 C9FFFF

 C9100C

 C90400

Harmonies

Analogous

The Analogous color harmony consists of three colors that are next to each other on the color wheel.



C59AAA



C99A99



C49D8B

Triad

The Triadic color harmony groups three colors that are evenly spaced from another and form a triangle on the color wheel.



C99A99



91AD90



8DA8C7

Complementary

The Complementary color scheme is a pair of colors which are on the opposite of each other on the color wheel.



C99A99



99C8C9

Split Complementary

Split-complementary colors differ from the complementary color scheme. The scheme consists of three colors, the original color and two neighbors of the complement color.



7CADC0



C99A99



80AFA1

Square

The Square scheme is like the rectangle color scheme, but the four colors are evenly spaced on the color wheel.



C99A99



A5A886



77AFB2



A3A2C5

Rectangle

The Rectangle color scheme consists of four colors that form a rectangle on the color wheel.



C99A99



BCA185



77AFB2



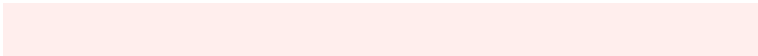
86AAC5

Sweetspot

The Sweet Spot groups the original color and five complimentary colors.



C99A99



FFEEED



C999C8



807675



000000



808080

Same Dimension

The Same Dimension uses a secret algorithm to generate beautiful new colors.



C99A99



FFB7B5



C9B299



635A5A



A30300



240100

Inverse Universe

The Inverse Universe completely reimagines the original color for something new.



99C8C9



B5FDFD



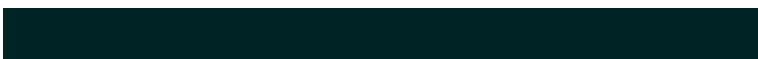
99B0C9



5A6363



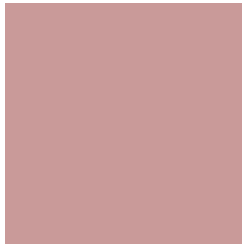
00A0A3



002324

Previews

White Background



This preview shows how the Hex color C99A99 looks on a white background.

Color Contrast Check

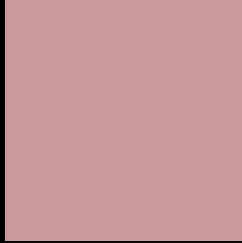
Large Text (above 18pt) WCAG AA × Fail

Any Text WCAG AA × Fail

Large Text (above 18pt) WCAG AAA × Fail

Any Text WCAG AAA × Fail

Black Background



This preview shows how the Hex color C99A99 looks on a black background.

Color Contrast Check

Large Text (above 18pt) WCAG AA ✓ Pass

Any Text WCAG AA ✓ Pass

Large Text (above 18pt) WCAG AAA ✓ Pass

Any Text WCAG AAA ✓ Pass

If you want to check with other color combinations, try the [Color Contrast Checker](#).

Hex C99A99 Background



This preview shows how black text looks on a background with the Hex color C99A99.

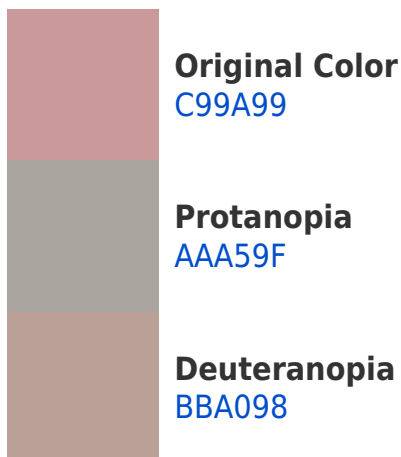



This preview shows how white text looks on a background with the Hex color C99A99.

Color Blindness Simulation

Color vision deficiency is a very complex topic, and I could not describe the different causes any better than Wikipedia does, so if you want to learn more, you should check out their [article about color blindness](#).

Dichromacy





Tritanopia
CA98A4

Trichromacy



Original Color
C99A99

Protanomaly
B5A19D

Deuteranomaly
C09E98

Tritanomaly
CA99A0

Monochromacy



Original Color
C99A99

Achromatopsia
A8A8A8

Achromatomaly
B4A3A3

CSS Examples

Text

The CSS property to change the color of the text to Hex C99A99 is called "color". The color property can be set on classes, ids or directly on the HTML element.

This example shows how text in the color #C99A99 looks like.

```
.text, #text, p{  
    color:#C99A99  
}
```

If you want to add a text shadow in that color use the text-shadow property, you can generate a text shadow directly with our [CSS Text Shadow Generator](#).

Here you see how black text with a 4 pixel #C99A99 colored shadow looks like.

```
.shadow{ text-shadow: 4px 4px 2px #C99A99
}
```

Border

The CSS property to change the border of an element to Hex C99A99 is called "border". The border property can be set on classes, ids or directly on the HTML element.

This example shows the color as border, it can be applied via the CSS property "border" or "border-color".

```
.border, #border, table{ border:4px solid
#C99A99 }
```

If only the border color should be changed use the property `border-color`.

```
.border{ border-color:#C99A99 }
```

If you want to add a box shadow in that color use:

Here you see how a box with a 4 pixel #C99A99 colored shadow looks like.

```
.boxshadow{ -moz-box-shadow:4px 4px 4px  
4px #C99A99; -webkit-box-shadow:4px 4px  
4px 4px #C99A99; box-shadow:4px 4px 4px  
4px #C99A99 }
```

Background

The CSS property to change the background color of an element to Hex C99A99 is called "background". The background property can be set on classes, ids or directly on the HTML element.

```
.background, #background, body{  
background:#C99A99 }
```

If only the background color should be changed can be used:

```
.background{ background-color:#C99A99 }
```

This example shows the color as background, it is applied via the CSS property "background".

To optimize and compress your CSS code, you can use our [online CSS compressor and optimizer](#) based on csstidy. If you want to create a linear or radial gradient as background or border, check our [CSS Gradient Generator](#).

Hey! You found this booklet interesting? Support Converting Colors with the new Membership Option!

The pro membership hides all ads, plus gives you double the colors in the color bucket, and more awesome pro features!

[Learn more, Memberships starting at \\$2.50/m!](#)

**Follow me
on Twitter!**

@ConvertingColor