

Converting Colors

Hex(C99CA8)

Have a look what the booklet for
Hex(C99CA8) contains.

Hex(C99CA8)	3
<i>Conversions</i>	4
<i>Details</i>	6
<i>Harmonies</i>	11
<i>Previews</i>	23
<i>Color Blindness Simulation</i>	26
<i>CSS Examples</i>	29

Color

Hex(C99CA8)

Conversions

Conversions Part 1

Format	Color
Hex	C99CA8
RGB	201, 156, 168
RGB Percent	79%, 61%, 66%
CMY	0.2118, 0.3882, 0.3412
CMYK	0.00, 0.22, 0.16, 0.21
HSL	344°, 29%, 70%
HSV	344°, 22%, 79%
XYZ	43.0437, 39.0216, 42.3091
YIQ	170.8230, 22.9680, 13.2720

Conversions

Conversions Part 2

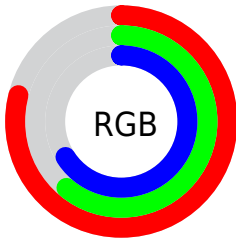
Format	Color
RYB	201, 156, 168
Decimal	13212840
CIELab	68.77, 18.59, 0.21
CIELCh	69, 18.594, 0.633
Yxy	39.0216, 0.3461, 0.3137
Android (android.graphics.Color)	4291402920 (0xFFC99CA8)
YUV	170.8230, -1.3917, 26.4652
Hunter-Lab	62.4673, 13.6796, 3.5700

Details

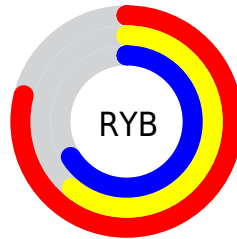
The Hex color **C99CA8** is a light color, and the websafe version is hex **CC9999**. A complement of this color would be **9CC9BD**, and the grayscale version is **ABABAB**.

A 20% lighter version of the original color is **FFD3DF**, and **926874** is the 20% darker color. If you saturate the color by 10%, you get **C98899**, and if you desaturate by 10%, it is **C9B0B7**.

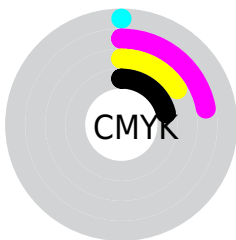
Distribution



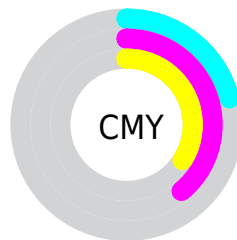
- Red (79%)
- Green (61%)
- Blue (66%)



- Red (79%)
- Yellow (61%)
- Blue (66%)



- Cyan (0%)
- Magenta (22%)
- Yellow (16%)
- Black (21%)



- Cyan (21%)
- Magenta (39%)
- Yellow (34%)

Brightness & Saturation Gradients

These gradients show how the Hex color C99CA8 changes by changing the brightness by 10 percent. The first figure shows a shift by +10% for each color and the second figure -10%.

Similar to the brightness gradients but the following saturation gradients show a change of the Hex color C99CA8 by changing the saturation by 10% instead.

 C99CA8

 C99CA8

FFFFFF

 AD828E

 FFD3DF

 926874

 FFEFFC

 78505C

 5F3944

 46232E

 2F0D19

 1A0001

 000000

 C99CA8

 C99CA8

 C98899

 C9B0B7

 C9748B

 C9C4C5

 C9607C

 C9D8D4

 C94C6D

 C9ECE3

 C9385E

 C9FFF2

 C92350

 C9FFFF

 C90F41

 C90036

Harmonies

Analogous

The Analogous color harmony consists of three colors that are next to each other on the color wheel.



BE9EB9



C99CA8



CA9D97

Triad

The Triadic color harmony groups three colors that are evenly spaced from another and form a triangle on the color wheel.



C99CA8



A2AC8B



82AEC5

Complementary

The Complementary color scheme is a pair of colors which are on the opposite of each other on the color wheel.



C99CA8



9CC9BD

Split Complementary

Split-complementary colors differ from the complementary color scheme. The scheme consists of three colors, the original color and two neighbors of the complement color.



7AB1B8



C99CA8



8FB097

Square

The Square scheme is like the rectangle color scheme, but the four colors are evenly spaced on the color wheel.



C99CA8



B4A786



80B2A8



95A9C9

Rectangle

The Rectangle color scheme consists of four colors that form a rectangle on the color wheel.



C99CA8



C6A08E



80B2A8



7EAFC1

Sweetspot

The Sweet Spot groups the original color and five complimentary colors.



C99CA8



FFEDF2



BD9CC9



807578



000000



808080

Same Dimension

The Same Dimension uses a secret algorithm to generate beautiful new colors.



C99CA8



FFBACD



C9A79C



635A5C



A3002C



24000A

Inverse Universe

The Inverse Universe completely reimagines the original color for something new.



C99CA8



FFBACD



9CBFC9



635A5C



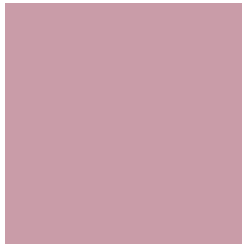
A3002C



24000A

Previews

White Background



This preview shows how the Hex color C99CA8 looks on a white background.

Color Contrast Check

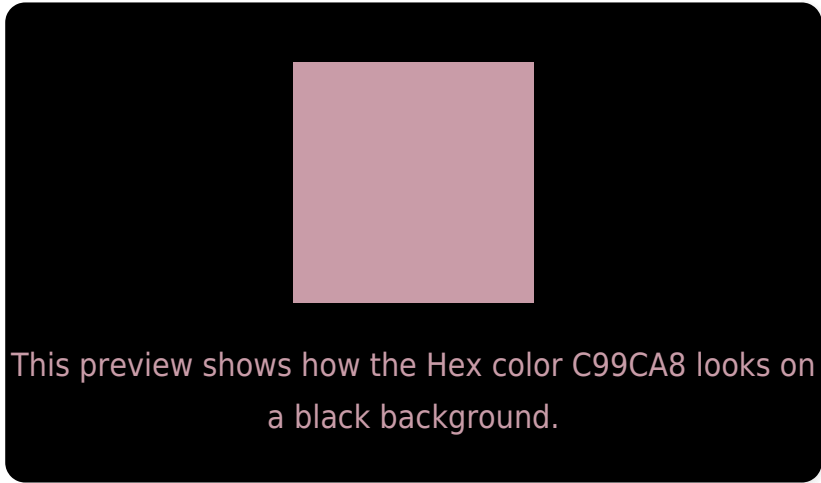
Large Text (above 18pt) WCAG AA × Fail

Any Text WCAG AA × Fail

Large Text (above 18pt) WCAG AAA × Fail

Any Text WCAG AAA × Fail

Black Background



Color Contrast Check

Large Text (above 18pt) WCAG AA ✓ Pass

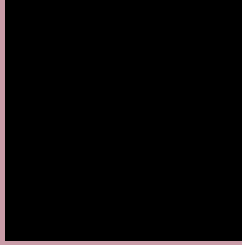
Any Text WCAG AA ✓ Pass

Large Text (above 18pt) WCAG AAA ✓ Pass

Any Text WCAG AAA ✓ Pass

If you want to check with other color combinations, try the [Color Contrast Checker](#).

Hex C99CA8 Background



This preview shows how black text looks on a background with the Hex color C99CA8.

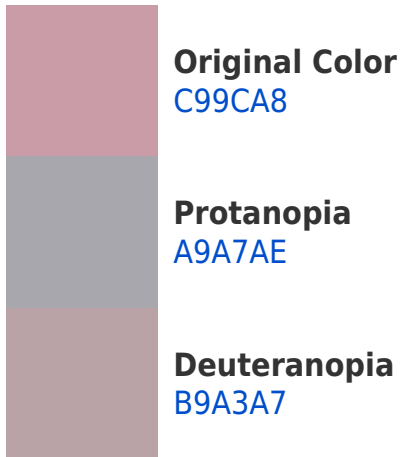


This preview shows how white text looks on a background with the Hex color C99CA8.

Color Blindness Simulation

Color vision deficiency is a very complex topic, and I could not describe the different causes any better than Wikipedia does, so if you want to learn more, you should check out their [article about color blindness](#).

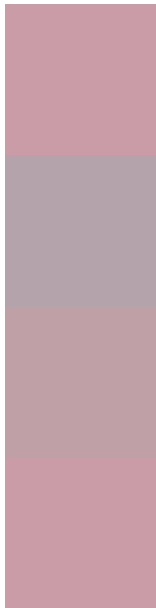
Dichromacy





Tritanopia
C99CA8

Trichromacy



Original Color
C99CA8

Protanomaly
B5A3AC

Deuteranomaly
BFA0A7

Tritanomaly
C99CA8

Monochromacy



Original Color
C99CA8

Achromatopsia
ABABAB

Achromatomaly
B6A6AA

CSS Examples

Text

The CSS property to change the color of the text to Hex C99CA8 is called "color". The color property can be set on classes, ids or directly on the HTML element.

This example shows how text in the color #C99CA8 looks like.

```
.text, #text, p{  
    color:#C99CA8  
}
```

If you want to add a text shadow in that color use the text-shadow property, you can generate a text shadow directly with our [CSS Text Shadow Generator](#).

Here you see how black text with a 4 pixel #C99CA8 colored shadow looks like.

```
.shadow{ text-shadow: 4px 4px 2px #C99CA8  
}
```

Border

The CSS property to change the border of an element to Hex C99CA8 is called "border". The border property can be set on classes, ids or directly on the HTML element.

This example shows the color as border, it can be applied via the CSS property "border" or "border-color".

```
.border, #border, table{ border:4px solid  
#C99CA8 }
```

If only the border color should be changed use the property `border-color`.

```
.border{ border-color:#C99CA8 }
```

If you want to add a box shadow in that color use:

Here you see how a box with a 4 pixel #C99CA8 colored shadow looks like.

```
.boxshadow{ -moz-box-shadow:4px 4px 4px  
4px #C99CA8; -webkit-box-shadow:4px 4px  
4px 4px #C99CA8; box-shadow:4px 4px 4px  
4px #C99CA8 }
```

Background

The CSS property to change the background color of an element to Hex C99CA8 is called "background". The background property can be set on classes, ids or directly on the HTML element.

```
.background, #background, body{  
background:#C99CA8 }
```

If only the background color should be changed can be used:

```
.background{ background-color:#C99CA8 }
```

This example shows the color as background, it is applied via the CSS property "background".

To optimize and compress your CSS code, you can use our [online CSS compressor and optimizer](#) based on csstidy. If you want to create a linear or radial gradient as background or border, check our [CSS Gradient Generator](#).

Hey! You found this booklet interesting? Support Converting Colors with the new Membership Option!

The pro membership hides all ads, plus gives you double the colors in the color bucket, and more awesome pro features!

[Learn more, Memberships starting at \\$2.50/m!](#)

**Follow me
on Twitter!**

@ConvertingColor