

Converting Colors

Hex(C99D90)

Have a look what the booklet for
Hex(C99D90) contains.

Hex(C99D90)	3
<i>Conversions</i>	4
<i>Details</i>	6
<i>Harmonies</i>	11
<i>Previews</i>	23
<i>Color Blindness Simulation</i>	26
<i>CSS Examples</i>	29

Color

Hex(C99D90)

Conversions

Conversions Part 1

Format	Color
Hex	C99D90
RGB	201, 157, 144
RGB Percent	79%, 62%, 56%
CMY	0.2118, 0.3843, 0.4353
CMYK	0.00, 0.22, 0.28, 0.21
HSL	14°, 35%, 68%
HSV	14°, 28%, 79%
XYZ	41.1784, 38.5451, 31.6552
YIQ	168.6740, 30.3970, 5.2850

Conversions

Conversions Part 2

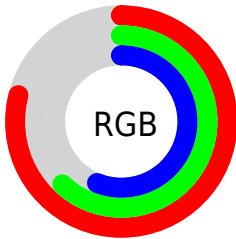
Format	Color
RYB	201, 161, 144
Decimal	13213072
CIELab	68.42, 14.46, 13.06
CIElCh	68, 19.483, 42.093
Yxy	38.5451, 0.3697, 0.3461
Android (android.graphics.Color)	4291403152 (0xFFC99D90)
YUV	168.6740, -12.1643, 28.3499
Hunter-Lab	62.0847, 9.7441, 13.2290

Details

The Hex color **C99D90** is a light color, and the websafe version is hex **CC9999**. A complement of this color would be **90BCC9**, and the grayscale version is **A9A9A9**.

A 20% lighter version of the original color is **FFD4C6**, and **926A5E** is the 20% darker color. If you saturate the color by 10%, you get **C98D7C**, and if you desaturate by 10%, it is **C9ADA4**.

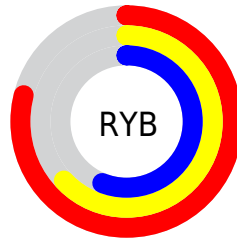
Distribution



Red (79%)

Green (62%)

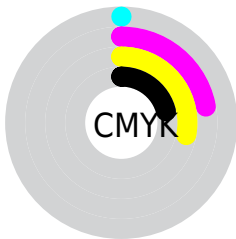
Blue (56%)



Red (79%)

Yellow (63%)

Blue (56%)

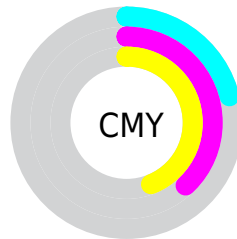


Cyan (0%)

Magenta (22%)

Yellow (28%)

Black (21%)



Cyan (21%)

Magenta (38%)

Yellow (44%)

Brightness & Saturation Gradients

These gradients show how the Hex color C99D90 changes by changing the brightness by 10 percent. The first figure shows a shift by +10% for each color and the second figure -10%.

Similar to the brightness gradients but the following saturation gradients show a change of the Hex color C99D90 by changing the saturation by 10% instead.

 C99D90

 C99D90

FFFFFF

 AD8376

 FFD4C6

 926A5E

 FFF0E2

 775146

FFFFFFE

 5E3A30

 45241B

 2E0F00

 120000

 000000

 C99D90

 C99D90

 C98D7C

 C9ADA4

 C97E68

 C9BCB8

 C96E54

 C9CCCC

 C95F40

 C9DBE0

 C94F2B

 C9EBF5

 C94017

 C9FAFF

 C93003

 C9FFFF

 C92E00

Harmonies

Analogous

The Analogous color harmony consists of three colors that are next to each other on the color wheel.



CB9AA0



C99D90



BEA286

Triad

The Triadic color harmony groups three colors that are evenly spaced from another and form a triangle on the color wheel.



C99D90



86B09B



9CA6C9

Complementary

The Complementary color scheme is a pair of colors which are on the opposite of each other on the color wheel.



C99D90



90BCC9

Split Complementary

Split-complementary colors differ from the complementary color scheme. The scheme consists of three colors, the original color and two neighbors of the complement color.



86ACC8



C99D90



79B1AE

Square

The Square scheme is like the rectangle color scheme, but the four colors are evenly spaced on the color wheel.



C99D90



99AD8C



78AFBE



B3A0C1

Rectangle

The Rectangle color scheme consists of four colors that form a rectangle on the color wheel.



C99D90



B3A684



78AFBE



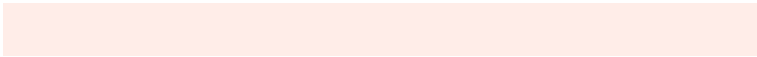
94A8CA

Sweetspot

The Sweet Spot groups the original color and five complimentary colors.



C99D90



FFEDE8



C990BD



807571



000000



808080

Same Dimension

The Same Dimension uses a secret algorithm to generate beautiful new colors.



C99D90



FFBCA8



C9B990



635C5A



A32500



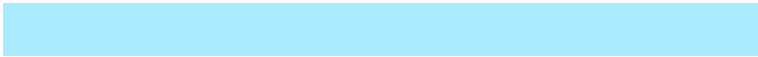
240800

Inverse Universe

The Inverse Universe completely reimagines the original color for something new.



90BCC9



A8EBFF



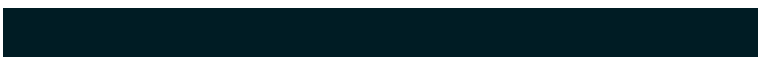
90A0C9



5A6163



007EA3



001C24

Previews

White Background



This preview shows how the Hex color C99D90 looks on a white background.

Color Contrast Check

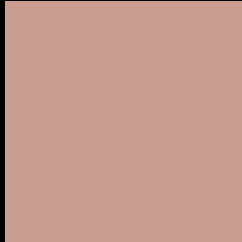
Large Text (above 18pt) WCAG AA × Fail

Any Text WCAG AA × Fail

Large Text (above 18pt) WCAG AAA × Fail

Any Text WCAG AAA × Fail

Black Background



This preview shows how the Hex color C99D90 looks on a black background.

Color Contrast Check

Large Text (above 18pt) WCAG AA ✓ Pass

Any Text WCAG AA ✓ Pass

Large Text (above 18pt) WCAG AAA ✓ Pass

Any Text WCAG AAA ✓ Pass

If you want to check with other color combinations, try the [Color Contrast Checker](#).

Hex C99D90 Background



This preview shows how black text looks on a background with the Hex color C99D90.



This preview shows how white text looks on a background with the Hex color C99D90.

Color Blindness Simulation

Color vision deficiency is a very complex topic, and I could not describe the different causes any better than Wikipedia does, so if you want to learn more, you should check out their [article about color blindness](#).

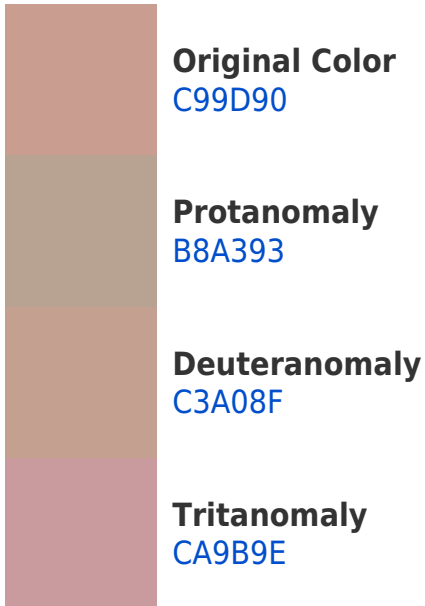
Dichromacy



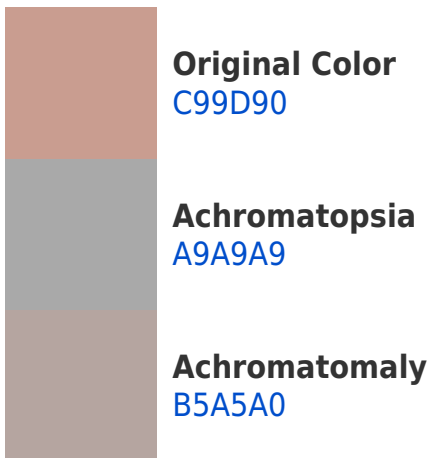


Tritanopia
CB9AA6

Trichromacy



Monochromacy



CSS Examples

Text

The CSS property to change the color of the text to Hex C99D90 is called "color". The color property can be set on classes, ids or directly on the HTML element.

This example shows how text in the color #C99D90 looks like.

```
.text, #text, p{  
    color:#C99D90  
}
```

If you want to add a text shadow in that color use the text-shadow property, you can generate a text shadow directly with our [CSS Text Shadow Generator](#).

Here you see how black text with a 4 pixel #C99D90 colored shadow looks like.

```
.shadow{ text-shadow: 4px 4px 2px #C99D90
}
```

Border

The CSS property to change the border of an element to Hex C99D90 is called "border". The border property can be set on classes, ids or directly on the HTML element.

This example shows the color as border, it can be applied via the CSS property "border" or "border-color".

```
.border, #border, table{ border:4px solid
#C99D90 }
```

If only the border color should be changed use the property `border-color`.

```
.border{ border-color:#C99D90 }
```

If you want to add a box shadow in that color use:

Here you see how a box with a 4 pixel #C99D90 colored shadow looks like.

```
.boxshadow{ -moz-box-shadow:4px 4px 4px  
4px #C99D90; -webkit-box-shadow:4px 4px  
4px 4px #C99D90; box-shadow:4px 4px 4px  
4px #C99D90 }
```

Background

The CSS property to change the background color of an element to Hex C99D90 is called "background". The background property can be set on classes, ids or directly on the HTML element.

```
.background, #background, body{  
background:#C99D90 }
```

If only the background color should be changed can be used:

```
.background{ background-color:#C99D90 }
```

This example shows the color as background, it is applied via the CSS property "background".

To optimize and compress your CSS code, you can use our [online CSS compressor and optimizer](#) based on csstidy. If you want to create a linear or radial gradient as background or border, check our [CSS Gradient Generator](#).

Hey! You found this booklet interesting? Support Converting Colors with the new Membership Option!

The pro membership hides all ads, plus gives you double the colors in the color bucket, and more awesome pro features!

[Learn more, Memberships starting at \\$2.50/m!](#)

**Follow me
on Twitter!**

@ConvertingColor