

Converting Colors

Hex(C99EA2)

Have a look what the booklet for
Hex(C99EA2) contains.

Hex(C99EA2)	3
<i>Conversions</i>	4
<i>Details</i>	6
<i>Harmonies</i>	11
<i>Previews</i>	23
<i>Color Blindness Simulation</i>	26
<i>CSS Examples</i>	29

Color

Hex(C99EA2)

Conversions

Conversions Part 1

Format	Color
Hex	C99EA2
RGB	201, 158, 162
RGB Percent	79%, 62%, 64%
CMY	0.2118, 0.3804, 0.3647
CMYK	0.00, 0.21, 0.19, 0.21
HSL	354°, 28%, 70%
HSV	354°, 21%, 79%
XYZ	42.8358, 39.4799, 39.5451
YIQ	171.3130, 24.3440, 10.3600

Conversions

Conversions Part 2

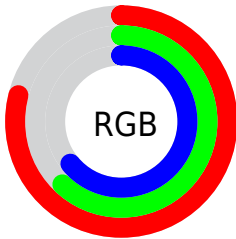
Format	Color
R_{YB}	201, 158, 162
Decimal	13213346
CIE _{Lab}	69.10, 16.55, 4.03
CIE _{LCh}	69, 17.031, 13.671
Yxy	39.4799, 0.3515, 0.3240
Android (android.graphics.Color)	4291403426 (0xFFC99EA2)
YUV	171.3130, -4.5913, 26.0355
Hunter-Lab	62.8330, 11.7330, 6.6679

Details

The Hex color **C99EA2** is a light color, and the websafe version is hex **CC9999**. A complement of this color would be **9EC9C5**, and the grayscale version is **ABABAB**.

A 20% lighter version of the original color is **FFD5D9**, and **926A6E** is the 20% darker color. If you saturate the color by 10%, you get **C98A90**, and if you desaturate by 10%, it is **C9B2B4**.

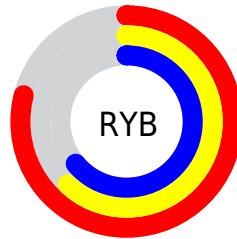
Distribution



Red (79%)

Green (62%)

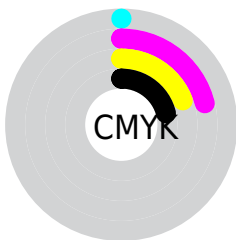
Blue (64%)



Red (79%)

Yellow (62%)

Blue (64%)

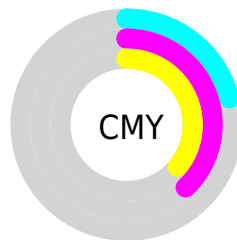


Cyan (0%)

Magenta (21%)

Yellow (19%)

Black (21%)



Cyan (21%)

Magenta (38%)

Yellow (36%)

Brightness & Saturation Gradients

These gradients show how the Hex color C99EA2 changes by changing the brightness by 10 percent. The first figure shows a shift by +10% for each color and the second figure -10%.

Similar to the brightness gradients but the following saturation gradients show a change of the Hex color C99EA2 by changing the saturation by 10% instead.



C99EA2



C99EA2

FFFFFF



AD8488



FFD5D9



926A6E



FFF1F5



785256



5F3B3F



462529



2F1015



190001



000000



C99EA2



C99EA2

 C98A90

 C9B2B4

 C9767E

 C9C6C6

 C9626B

 C9DAD9

 C94E59

 C9EEEE

 C93A47

 C9FFFD

 C92535

 C9FFFF

 C91122

 C90013

Harmonies

Analogous

The Analogous color harmony consists of three colors that are next to each other on the color wheel.



C39FB2



C99EA2



C7A094

Triad

The Triadic color harmony groups three colors that are evenly spaced from another and form a triangle on the color wheel.



C99EA2



9CAE92



8DADC6

Complementary

The Complementary color scheme is a pair of colors which are on the opposite of each other on the color wheel.



C99EA2



9EC9C5

Split Complementary

Split-complementary colors differ from the complementary color scheme. The scheme consists of three colors, the original color and two neighbors of the complement color.



81B0BD



C99EA2



8BB19F

Square

The Square scheme is like the rectangle color scheme, but the four colors are evenly spaced on the color wheel.



C99EA2



ADAA8B



81B2AF



A1A8C6

Rectangle

The Rectangle color scheme consists of four colors that form a rectangle on the color wheel.



C99EA2



C1A38E



81B2AF



88AEC4

Sweetspot

The Sweet Spot groups the original color and five complimentary colors.



C99EA2



FFF0F1



C59EC9



807777



000000



808080

Same Dimension

The Same Dimension uses a secret algorithm to generate beautiful new colors.



C99EA2



FFBDC3



C9AF9E



635A5A



A3000F



240003

Inverse Universe

The Inverse Universe completely reimagines the original color for something new.



C99EA2



FFBDC3



9EB8C9



635A5A



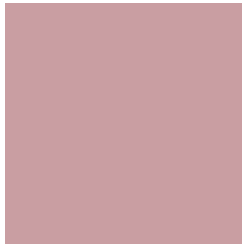
A3000F



240003

Previews

White Background



This preview shows how the Hex color C99EA2 looks on a white background.

Color Contrast Check

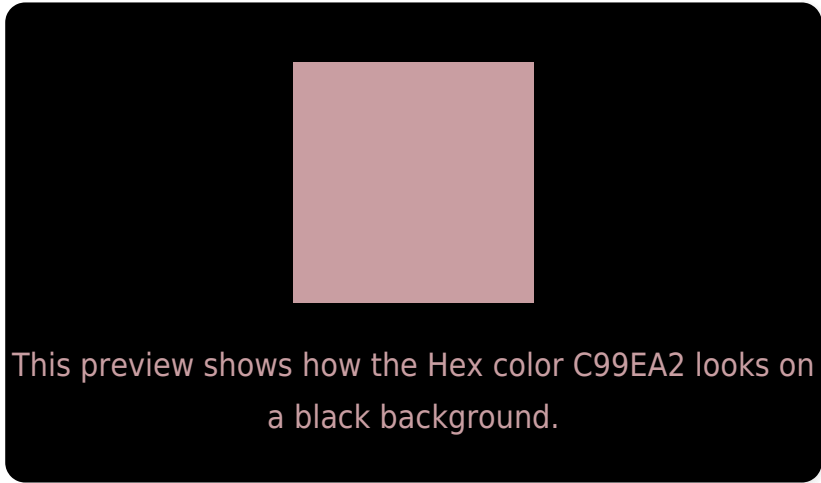
Large Text (above 18pt) WCAG AA × Fail

Any Text WCAG AA × Fail

Large Text (above 18pt) WCAG AAA × Fail

Any Text WCAG AAA × Fail

Black Background



Color Contrast Check

Large Text (above 18pt) WCAG AA ✓ Pass

Any Text WCAG AA ✓ Pass

Large Text (above 18pt) WCAG AAA ✓ Pass

Any Text WCAG AAA ✓ Pass

If you want to check with other color combinations, try the [Color Contrast Checker](#).

Hex C99EA2 Background



This preview shows how black text looks on a background with the Hex color C99EA2.

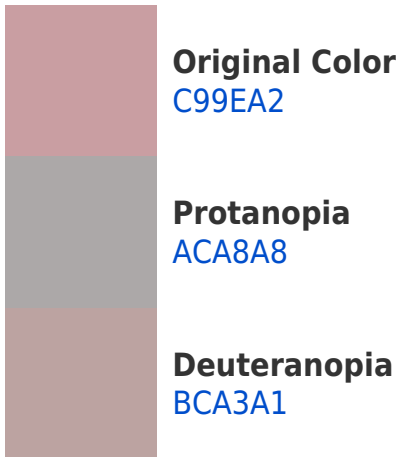


This preview shows how white text looks on a background with the Hex color C99EA2.

Color Blindness Simulation

Color vision deficiency is a very complex topic, and I could not describe the different causes any better than Wikipedia does, so if you want to learn more, you should check out their [article about color blindness](#).

Dichromacy





Tritanopia
CA9DA9

Trichromacy



Original Color
C99EA2

Protanomaly
B7A4A6

Deuteranomaly
C1A1A1

Tritanomaly
CA9DA6

Monochromacy



Original Color
C99EA2

Achromatopsia
ABABAB

Achromatomaly
B6A6A8

CSS Examples

Text

The CSS property to change the color of the text to Hex C99EA2 is called "color". The color property can be set on classes, ids or directly on the HTML element.

This example shows how text in the color #C99EA2 looks like.

```
.text, #text, p{  
    color:#C99EA2  
}
```

If you want to add a text shadow in that color use the text-shadow property, you can generate a text shadow directly with our [CSS Text Shadow Generator](#).

Here you see how black text with a 4 pixel #C99EA2 colored shadow looks like.

```
.shadow{ text-shadow: 4px 4px 2px #C99EA2
}
```

Border

The CSS property to change the border of an element to Hex C99EA2 is called "border". The border property can be set on classes, ids or directly on the HTML element.

This example shows the color as border, it can be applied via the CSS property "border" or "border-color".

```
.border, #border, table{ border:4px solid
#C99EA2 }
```

If only the border color should be changed use the property `border-color`.

```
.border{ border-color:#C99EA2 }
```

If you want to add a box shadow in that color use:

Here you see how a box with a 4 pixel #C99EA2 colored shadow looks like.

```
.boxshadow{ -moz-box-shadow:4px 4px 4px  
4px #C99EA2; -webkit-box-shadow:4px 4px  
4px 4px #C99EA2; box-shadow:4px 4px 4px  
4px #C99EA2 }
```

Background

The CSS property to change the background color of an element to Hex C99EA2 is called "background". The background property can be set on classes, ids or directly on the HTML element.

```
.background, #background, body{  
background:#C99EA2 }
```

If only the background color should be changed can be used:

```
.background{ background-color:#C99EA2 }
```

This example shows the color as background, it is applied via the CSS property "background".

To optimize and compress your CSS code, you can use our [online CSS compressor and optimizer](#) based on csstidy. If you want to create a linear or radial gradient as background or border, check our [CSS Gradient Generator](#).

Hey! You found this booklet interesting? Support Converting Colors with the new Membership Option!

The pro membership hides all ads, plus gives you double the colors in the color bucket, and more awesome pro features!

[Learn more, Memberships starting at \\$2.50/m!](#)

**Follow me
on Twitter!**

@ConvertingColor