

Converting Colors

Hex(C99EA7)

Have a look what the booklet for
Hex(C99EA7) contains.

Hex(C99EA7)	3
<i>Conversions</i>	4
<i>Details</i>	6
<i>Harmonies</i>	11
<i>Previews</i>	23
<i>Color Blindness Simulation</i>	26
<i>CSS Examples</i>	29

Color

Hex(C99EA7)

Conversions

Conversions Part 1

Format	Color
Hex	C99EA7
RGB	201, 158, 167
RGB Percent	79%, 62%, 65%
CMY	0.2118, 0.3804, 0.3451
CMYK	0.00, 0.21, 0.17, 0.21
HSL	347°, 28%, 70%
HSV	347°, 21%, 79%
XYZ	43.2893, 39.6612, 41.9330
YIQ	171.8830, 22.7390, 11.9150

Conversions

Conversions Part 2

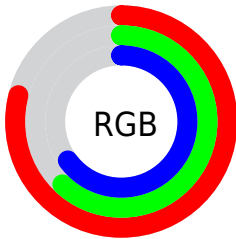
Format	Color
R_{YB}	201, 158, 167
Decimal	13213351
CIE _{Lab}	69.23, 17.34, 1.43
CIE _{LCh}	69, 17.395, 4.726
Yxy	39.6612, 0.3466, 0.3176
Android (android.graphics.Color)	4291403431 (0xFFC99EA7)
YUV	171.8830, -2.4073, 25.5356
Hunter-Lab	62.9772, 12.4874, 4.6061

Details

The Hex color **C99EA7** is a light color, and the websafe version is hex **CC9999**. A complement of this color would be **9EC9C0**, and the grayscale version is **ACACAC**.

A 20% lighter version of the original color is **FFD5DE**, and **926A73** is the 20% darker color. If you saturate the color by 10%, you get **C98A97**, and if you desaturate by 10%, it is **C9B2B7**.

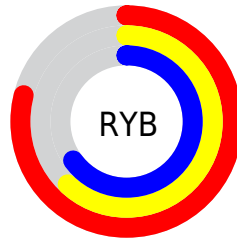
Distribution



Red (79%)

Green (62%)

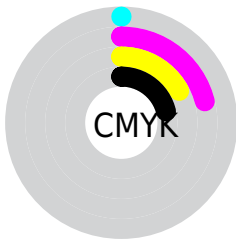
Blue (65%)



Red (79%)

Yellow (62%)

Blue (65%)

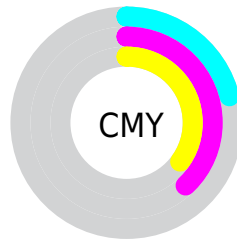


Cyan (0%)

Magenta (21%)

Yellow (17%)

Black (21%)



Cyan (21%)

Magenta (38%)

Yellow (35%)

Brightness & Saturation Gradients

These gradients show how the Hex color C99EA7 changes by changing the brightness by 10 percent. The first figure shows a shift by +10% for each color and the second figure -10%.

Similar to the brightness gradients but the following saturation gradients show a change of the Hex color C99EA7 by changing the saturation by 10% instead.



C99EA7



C99EA7

FFFFFF



AD848D



FFD5DE



926A73



FFF1FB



78525B



5F3B43



46242D



2F0F19



1B0001



000000



C99EA7



C99EA7

 C98A97

 C9B2B7

 C97687

 C9C6C7

 C96277

 C9DAD7

 C94E67

 C9EEE7

 C93A58

 C9FFF6

 C92548

 C9FFFF

 C91138

 C9002A

Harmonies

Analogous

The Analogous color harmony consists of three colors that are next to each other on the color wheel.



C0A0B7



C99EA7



C99F98

Triad

The Triadic color harmony groups three colors that are evenly spaced from another and form a triangle on the color wheel.



C99EA7



A1AE8F



88AEC5

Complementary

The Complementary color scheme is a pair of colors which are on the opposite of each other on the color wheel.



C99EA7



9EC9C0

Split Complementary

Split-complementary colors differ from the complementary color scheme. The scheme consists of three colors, the original color and two neighbors of the complement color.



7FB1BA



C99EA7



90B19B

Square

The Square scheme is like the rectangle color scheme, but the four colors are evenly spaced on the color wheel.



C99EA7



B3A98A



83B2AB



9AAAC8

Rectangle

The Rectangle color scheme consists of four colors that form a rectangle on the color wheel.



C99EA7



C5A290



83B2AB



84B0C2

Sweetspot

The Sweet Spot groups the original color and five complimentary colors.



C99EA7



FFF0F3



C09EC9



807778



000000



808080

Same Dimension

The Same Dimension uses a secret algorithm to generate beautiful new colors.



C99EA7



FFBDCB



C9AA9E



635A5C



A30022



240007

Inverse Universe

The Inverse Universe completely reimagines the original color for something new.



C99EA7



FFBDCB



9EBDC9



635A5C



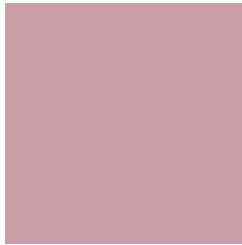
A30022



240007

Previews

White Background



This preview shows how the Hex color C99EA7 looks on a white background.

Color Contrast Check

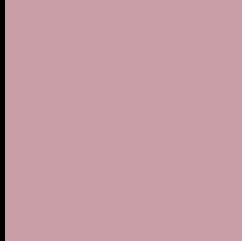
Large Text (above 18pt) WCAG AA × Fail

Any Text WCAG AA × Fail

Large Text (above 18pt) WCAG AAA × Fail

Any Text WCAG AAA × Fail

Black Background



This preview shows how the Hex color C99EA7 looks on a black background.

Color Contrast Check

Large Text (above 18pt) WCAG AA ✓ Pass

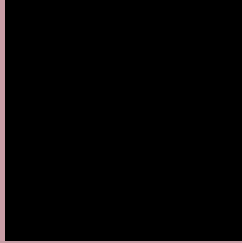
Any Text WCAG AA ✓ Pass

Large Text (above 18pt) WCAG AAA ✓ Pass

Any Text WCAG AAA ✓ Pass

If you want to check with other color combinations, try the [Color Contrast Checker](#).

Hex C99EA7 Background



This preview shows how black text looks on a background with the Hex color C99EA7.

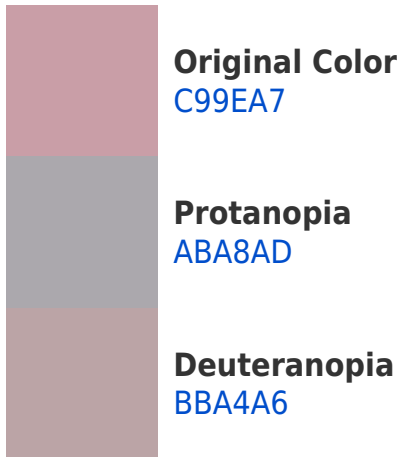


This preview shows how white text looks on a background with the Hex color C99EA7.

Color Blindness Simulation

Color vision deficiency is a very complex topic, and I could not describe the different causes any better than Wikipedia does, so if you want to learn more, you should check out their [article about color blindness](#).

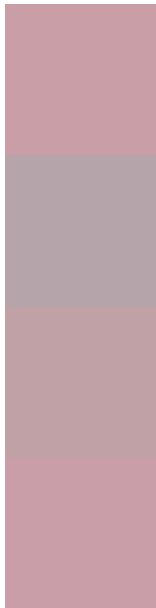
Dichromacy





Tritanopia
C99EAA

Trichromacy



Original Color
C99EA7

Protanomaly
B6A4AB

Deuteranomaly
C0A2A6

Tritanomaly
C99EA9

Monochromacy



Original Color
C99EA7

Achromatopsia
ACACAC

Achromatomaly
B7A7AA

CSS Examples

Text

The CSS property to change the color of the text to Hex C99EA7 is called "color". The color property can be set on classes, ids or directly on the HTML element.

This example shows how text in the color #C99EA7 looks like.

```
.text, #text, p{  
    color:#C99EA7  
}
```

If you want to add a text shadow in that color use the text-shadow property, you can generate a text shadow directly with our [CSS Text Shadow Generator](#).

Here you see how black text with a 4 pixel #C99EA7 colored shadow looks like.

```
.shadow{ text-shadow: 4px 4px 2px #C99EA7
}
```

Border

The CSS property to change the border of an element to Hex C99EA7 is called "border". The border property can be set on classes, ids or directly on the HTML element.

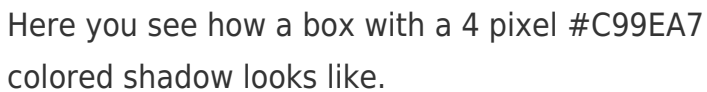
This example shows the color as border, it can be applied via the CSS property "border" or "border-color".

```
.border, #border, table{ border:4px solid
#C99EA7 }
```

If only the border color should be changed use the property `border-color`.

```
.border{ border-color:#C99EA7 }
```

If you want to add a box shadow in that color use:



Here you see how a box with a 4 pixel #C99EA7 colored shadow looks like.

```
.boxshadow{ -moz-box-shadow:4px 4px 4px  
4px #C99EA7; -webkit-box-shadow:4px 4px  
4px 4px #C99EA7; box-shadow:4px 4px 4px  
4px #C99EA7 }
```

Background

The CSS property to change the background color of an element to Hex C99EA7 is called "background". The background property can be set on classes, ids or directly on the HTML element.

```
.background, #background, body{  
background:#C99EA7 }
```

If only the background color should be changed can be used:

```
.background{ background-color:#C99EA7 }
```

This example shows the color as background, it is applied via the CSS property "background".

To optimize and compress your CSS code, you can use our [online CSS compressor and optimizer](#) based on csstidy. If you want to create a linear or radial gradient as background or border, check our [CSS Gradient Generator](#).

Hey! You found this booklet interesting? Support Converting Colors with the new Membership Option!

The pro membership hides all ads, plus gives you double the colors in the color bucket, and more awesome pro features!

[Learn more, Memberships starting at \\$2.50/m!](#)

**Follow me
on Twitter!**

@ConvertingColor