

Converting Colors

Hex(C9A2A6)

Have a look what the booklet for
Hex(C9A2A6) contains.

Hex(C9A2A6)	3
<i>Conversions</i>	4
<i>Details</i>	6
<i>Harmonies</i>	11
<i>Previews</i>	23
<i>Color Blindness Simulation</i>	26
<i>CSS Examples</i>	29

Color

Hex(C9A2A6)

Conversions

Conversions Part 1

Format	Color
Hex	C9A2A6
RGB	201, 162, 166
RGB Percent	79%, 64%, 65%
CMY	0.2118, 0.3647, 0.3490
CMYK	0.00, 0.19, 0.17, 0.21
HSL	354°, 27%, 71%
HSV	354°, 19%, 79%
XYZ	43.8907, 41.0113, 41.6791
YIQ	174.1170, 21.9600, 9.5120

Conversions

Conversions Part 2

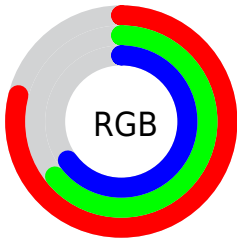
Format	Color
R _Y B	201, 162, 166
Decimal	13214374
CIE Lab	70.18, 14.99, 3.38
CIE LCh	70, 15.362, 12.696
Yxy	41.0113, 0.3467, 0.3240
Android (android.graphics.Color)	4291404454 (0xFFC9A2A6)
YUV	174.1170, -4.0017, 23.5764
Hunter-Lab	64.0401, 10.2670, 6.2405

Details

The Hex color **C9A2A6** is a light color, and the websafe version is hex **CC9999**. A complement of this color would be **A2C9C5**, and the grayscale version is **AEAEAE**.

A 20% lighter version of the original color is **FFD9DD**, and **926E72** is the 20% darker color. If you saturate the color by 10%, you get **C98E94**, and if you desaturate by 10%, it is **C9B6B8**.

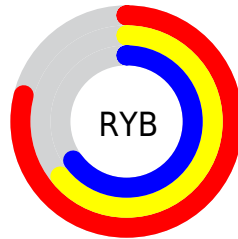
Distribution



Red (79%)

Green (64%)

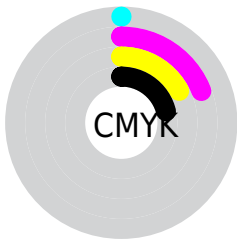
Blue (65%)



Red (79%)

Yellow (64%)

Blue (65%)

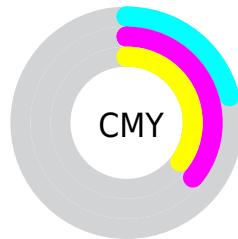


Cyan (0%)

Magenta (19%)

Yellow (17%)

Black (21%)



Cyan (21%)

Magenta (36%)

Yellow (35%)

Brightness & Saturation Gradients

These gradients show how the Hex color C9A2A6 changes by changing the brightness by 10 percent. The first figure shows a shift by +10% for each color and the second figure -10%.

Similar to the brightness gradients but the following saturation gradients show a change of the Hex color C9A2A6 by changing the saturation by 10% instead.



C9A2A6



C9A2A6

FFFFFF



AD888C



FFD9DD



926E72



FFF5FA



78565A



5F3E42



47282C



2F1318



1D0001



000000



C9A2A6



C9A2A6

 C98E94

 C9B6B8

 C97A82

 C9CACA

 C96670

 C9DEDC

 C9525E

 C9F2EE

 C93E4C

 C9FFFF

 C9293A

 C91528

 C90116

 C90015

Harmonies

Analogous

The Analogous color harmony consists of three colors that are next to each other on the color wheel.



C3A3B4



C9A2A6



C7A499

Triad

The Triadic color harmony groups three colors that are evenly spaced from another and form a triangle on the color wheel.



C9A2A6



A0B197



93AFC6

Complementary

The Complementary color scheme is a pair of colors which are on the opposite of each other on the color wheel.



C9A2A6



A2C9C5

Split Complementary

Split-complementary colors differ from the complementary color scheme. The scheme consists of three colors, the original color and two neighbors of the complement color.



89B2BE



C9A2A6



92B3A3

Square

The Square scheme is like the rectangle color scheme, but the four colors are evenly spaced on the color wheel.



C9A2A6



B0AD90



88B4B1



A4ABC7

Rectangle

The Rectangle color scheme consists of four colors that form a rectangle on the color wheel.



C9A2A6



C2A693



88B4B1



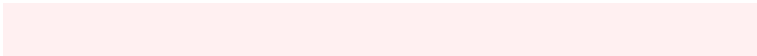
8EB0C4

Sweetspot

The Sweet Spot groups the original color and five complimentary colors.



C9A2A6



FFF0F1



C4A2C9



807777



000000



808080

Same Dimension

The Same Dimension uses a secret algorithm to generate beautiful new colors.



C9A2A6



FFC4CA



C9B1A2



635A5B



A30011



240004

Inverse Universe

The Inverse Universe completely reimagines the original color for something new.



C9A2A6



FFC4CA



A2BAC9



635A5B



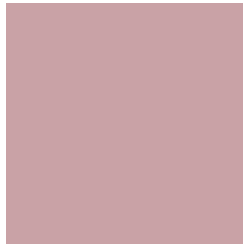
A30011



240004

Previews

White Background



This preview shows how the Hex color C9A2A6 looks on a white background.

Color Contrast Check

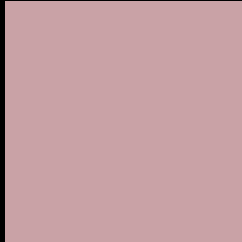
Large Text (above 18pt) WCAG AA × Fail

Any Text WCAG AA × Fail

Large Text (above 18pt) WCAG AAA × Fail

Any Text WCAG AAA × Fail

Black Background



This preview shows how the Hex color C9A2A6 looks on a black background.

Color Contrast Check

Large Text (above 18pt) WCAG AA ✓ Pass

Any Text WCAG AA ✓ Pass

Large Text (above 18pt) WCAG AAA ✓ Pass

Any Text WCAG AAA ✓ Pass

If you want to check with other color combinations, try the [Color Contrast Checker](#).

Hex C9A2A6 Background



This preview shows how black text looks on a background with the Hex color C9A2A6.



This preview shows how white text looks on a background with the Hex color C9A2A6.

Color Blindness Simulation

Color vision deficiency is a very complex topic, and I could not describe the different causes any better than Wikipedia does, so if you want to learn more, you should check out their [article about color blindness](#).

Dichromacy

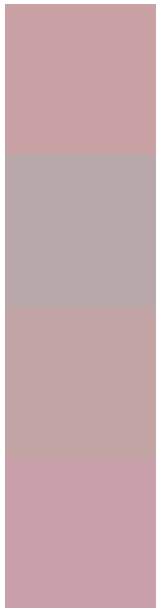


Original Color
C9A2A6

Protanopia
AFABAB

Deuteranopia
BFA6A5

Trichromacy



Original Color
C9A2A6

Protanomaly
B8A8A9

Deuteranomaly
C3A5A5

Tritanomaly
CAA1AA

Monochromacy



Original Color
C9A2A6

Achromatopsia
AEAEAE

Achromatomaly
B8AAAB

CSS Examples

Text

The CSS property to change the color of the text to Hex C9A2A6 is called "color". The color property can be set on classes, ids or directly on the HTML element.

This example shows how text in the color #C9A2A6 looks like.

```
.text, #text, p{  
    color:#C9A2A6  
}
```

If you want to add a text shadow in that color use the text-shadow property, you can generate a text shadow directly with our [CSS Text Shadow Generator](#).

Here you see how black text with a 4 pixel #C9A2A6 colored shadow looks like.

```
.shadow{ text-shadow: 4px 4px 2px #C9A2A6
}
```

Border

The CSS property to change the border of an element to Hex C9A2A6 is called "border". The border property can be set on classes, ids or directly on the HTML element.

This example shows the color as border, it can be applied via the CSS property "border" or "border-color".

```
.border, #border, table{ border:4px solid
#C9A2A6 }
```

If only the border color should be changed use the property `border-color`.

```
.border{ border-color:#C9A2A6 }
```

If you want to add a box shadow in that color use:

Here you see how a box with a 4 pixel #C9A2A6 colored shadow looks like.

```
.boxshadow{ -moz-box-shadow:4px 4px 4px  
4px #C9A2A6; -webkit-box-shadow:4px 4px  
4px 4px #C9A2A6; box-shadow:4px 4px 4px  
4px #C9A2A6 }
```

Background

The CSS property to change the background color of an element to Hex C9A2A6 is called "background". The background property can be set on classes, ids or directly on the HTML element.

```
.background, #background, body{  
background:#C9A2A6 }
```

If only the background color should be changed can be used:

```
.background{ background-color:#C9A2A6 }
```

This example shows the color as background, it is applied via the CSS property "background".

To optimize and compress your CSS code, you can use our [online CSS compressor and optimizer](#) based on csstidy. If you want to create a linear or radial gradient as background or border, check our [CSS Gradient Generator](#).

Hey! You found this booklet interesting? Support Converting Colors with the new Membership Option!

The pro membership hides all ads, plus gives you double the colors in the color bucket, and more awesome pro features!

[Learn more, Memberships starting at \\$2.50/m!](#)

**Follow me
on Twitter!**

@ConvertingColor