

Converting Colors

Hex(C9A5AA)

Have a look what the booklet for
Hex(C9A5AA) contains.

Hex(C9A5AA)	3
<i>Conversions</i>	4
<i>Details</i>	6
<i>Harmonies</i>	11
<i>Previews</i>	23
<i>Color Blindness Simulation</i>	26
<i>CSS Examples</i>	29

Color

Hex(C9A5AA)

Conversions

Conversions Part 1

Format	Color
Hex	C9A5AA
RGB	201, 165, 170
RGB Percent	79%, 65%, 67%
CMY	0.2118, 0.3529, 0.3333
CMYK	0.00, 0.18, 0.15, 0.21
HSL	352°, 25%, 72%
HSV	352°, 18%, 79%
XYZ	44.7982, 42.2301, 43.8203
YIQ	176.3340, 19.8510, 9.1870

Conversions

Conversions Part 2

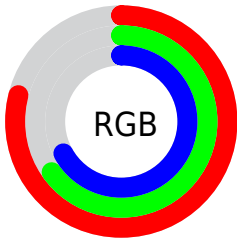
Format	Color
R _Y B	201, 165, 170
Decimal	13215146
CIE Lab	71.03, 13.99, 2.39
CIE LCh	71, 14.191, 9.690
Yxy	42.2301, 0.3424, 0.3227
Android (android.graphics.Color)	4291405226 (0xFFC9A5AA)
YUV	176.3340, -3.1227, 21.6321
Hunter-Lab	64.9847, 9.3287, 5.5090

Details

The Hex color **C9A5AA** is a light color, and the websafe version is hex **CC9999**. A complement of this color would be **A5C9C4**, and the grayscale version is **B0B0B0**.

A 20% lighter version of the original color is **FFDCE1**, and **937176** is the 20% darker color. If you saturate the color by 10%, you get **C99199**, and if you desaturate by 10%, it is **C9B9BB**.

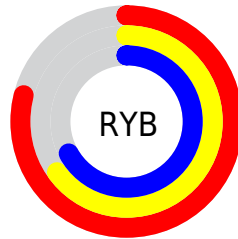
Distribution



Red (79%)

Green (65%)

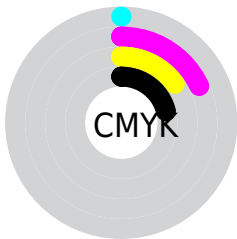
Blue (67%)



Red (79%)

Yellow (65%)

Blue (67%)

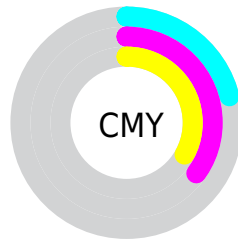


Cyan (0%)

Magenta (18%)

Yellow (15%)

Black (21%)



Cyan (21%)

Magenta (35%)

Yellow (33%)

Brightness & Saturation Gradients

These gradients show how the Hex color C9A5AA changes by changing the brightness by 10 percent. The first figure shows a shift by +10% for each color and the second figure -10%.

Similar to the brightness gradients but the following saturation gradients show a change of the Hex color C9A5AA by changing the saturation by 10% instead.

 C9A5AA

 C9A5AA

FFFFFF

 AD8B90

 FFDCE1

 937176

 FFF9FE

 79585D

 5F4146

 472B2F

 30161B

 1E0000

 000000

 C9A5AA

 C9A5AA

 C99199

 C9B9BB

 C97D87

 C9CDCD

 C96976

 C9E1DE

 C95565

 C9F5EF

 C94153

 C9FFFF

 C92C42

 C91831

 C90420

 C9001C

Harmonies

Analogous

The Analogous color harmony consists of three colors that are next to each other on the color wheel.



C2A6B7



C9A5AA



C8A79E

Triad

The Triadic color harmony groups three colors that are evenly spaced from another and form a triangle on the color wheel.



C9A5AA



A5B29A



96B2C6

Complementary

The Complementary color scheme is a pair of colors which are on the opposite of each other on the color wheel.



C9A5AA



A5C9C4

Split Complementary

Split-complementary colors differ from the complementary color scheme. The scheme consists of three colors, the original color and two neighbors of the complement color.



8DB4BE



C9A5AA



97B5A4

Square

The Square scheme is like the rectangle color scheme, but the four colors are evenly spaced on the color wheel.



C9A5AA



B4AE94



8EB6B2



A5AEC7

Rectangle

The Rectangle color scheme consists of four colors that form a rectangle on the color wheel.



C9A5AA



C4A998



8EB6B2



92B3C4

Sweetspot

The Sweet Spot groups the original color and five complimentary colors.



C9A5AA



FFF2F4



C4A5C9



807879



000000



808080

Same Dimension

The Same Dimension uses a secret algorithm to generate beautiful new colors.



C9A5AA



FFC9D1



C9B2A5



635A5B



A30017



240005

Inverse Universe

The Inverse Universe completely reimagines the original color for something new.



C9A5AA



FFC9D1



A5BCC9



635A5B



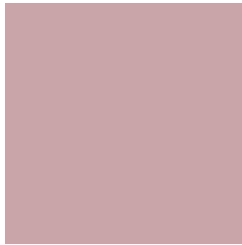
A30017



240005

Previews

White Background



This preview shows how the Hex color C9A5AA looks on a white background.

Color Contrast Check

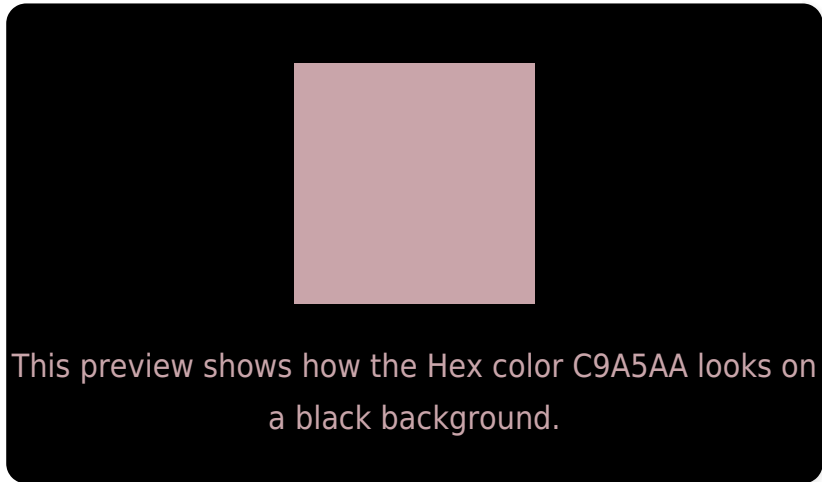
Large Text (above 18pt) WCAG AA × Fail

Any Text WCAG AA × Fail

Large Text (above 18pt) WCAG AAA × Fail

Any Text WCAG AAA × Fail

Black Background



Color Contrast Check

Large Text (above 18pt) WCAG AA ✓ Pass

Any Text WCAG AA ✓ Pass

Large Text (above 18pt) WCAG AAA ✓ Pass

Any Text WCAG AAA ✓ Pass

If you want to check with other color combinations, try the [Color Contrast Checker](#).

Hex C9A5AA Background



This preview shows how black text looks on a background with the Hex color C9A5AA.

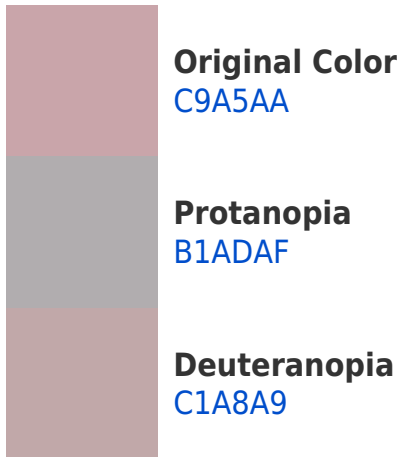


This preview shows how white text looks on a background with the Hex color C9A5AA.

Color Blindness Simulation

Color vision deficiency is a very complex topic, and I could not describe the different causes any better than Wikipedia does, so if you want to learn more, you should check out their [article about color blindness](#).

Dichromacy





Tritanopia
CAA4B1

Trichromacy



Original Color
C9A5AA

Protanomaly
BAAAAD

Deuteranomaly
C4A7A9

Tritanomaly
CAA4AE

Monochromacy



Original Color
C9A5AA

Achromatopsia
B0B0B0

Achromatomaly
B9ACAE

CSS Examples

Text

The CSS property to change the color of the text to Hex C9A5AA is called "color". The color property can be set on classes, ids or directly on the HTML element.

This example shows how text in the color #C9A5AA looks like.

```
.text, #text, p{  
    color:#C9A5AA  
}
```

If you want to add a text shadow in that color use the text-shadow property, you can generate a text shadow directly with our [CSS Text Shadow Generator](#).

Here you see how black text with a 4 pixel #C9A5AA colored shadow looks like.

```
.shadow{ text-shadow: 4px 4px 2px #C9A5AA
}
```

Border

The CSS property to change the border of an element to Hex C9A5AA is called "border". The border property can be set on classes, ids or directly on the HTML element.

This example shows the color as border, it can be applied via the CSS property "border" or "border-color".

```
.border, #border, table{ border:4px solid
#C9A5AA }
```

If only the border color should be changed use the property border-color.

```
.border{ border-color:#C9A5AA }
```

If you want to add a box shadow in that color use:

Here you see how a box with a 4 pixel #C9A5AA colored shadow looks like.

```
.boxshadow{ -moz-box-shadow:4px 4px 4px  
4px #C9A5AA; -webkit-box-shadow:4px 4px  
4px 4px #C9A5AA; box-shadow:4px 4px 4px  
4px #C9A5AA }
```

Background

The CSS property to change the background color of an element to Hex C9A5AA is called "background". The background property can be set on classes, ids or directly on the HTML element.

```
.background, #background, body{  
background:#C9A5AA }
```

If only the background color should be changed can be used:

```
.background{ background-color:#C9A5AA }
```

This example shows the color as background, it is applied via the CSS property "background".

To optimize and compress your CSS code, you can use our [online CSS compressor and optimizer](#) based on csstidy. If you want to create a linear or radial gradient as background or border, check our [CSS Gradient Generator](#).

Hey! You found this booklet interesting? Support Converting Colors with the new Membership Option!

The pro membership hides all ads, plus gives you double the colors in the color bucket, and more awesome pro features!

[Learn more, Memberships starting at \\$2.50/m!](#)

**Follow me
on Twitter!**

@ConvertingColor