

# Converting Colors

Hex(C9AFA4)

Have a look what the booklet for  
Hex(C9AFA4) contains.

<b>Hex(C9AFA4)</b> .....	3
<i><b>Conversions</b></i> .....	4
<i><b>Details</b></i> .....	6
<i><b>Harmonies</b></i> .....	11
<i><b>Previews</b></i> .....	23
<i><b>Color Blindness Simulation</b></i> .....	26
<i><b>CSS Examples</b></i> .....	29

# **Color**

**Hex(C9AFA4)**

# Conversions

## Conversions Part 1

Format	Color
Hex	C9AFA4
RGB	201, 175, 164
RGB Percent	79%, 69%, 64%
CMY	0.2118, 0.3137, 0.3569
CMYK	0.00, 0.13, 0.18, 0.21
HSL	18°, 26%, 72%
HSV	18°, 18%, 79%
XYZ	46.1182, 45.7578, 41.5234
YIQ	181.5200, 19.0270, 2.0910

# Conversions

## Conversions Part 2

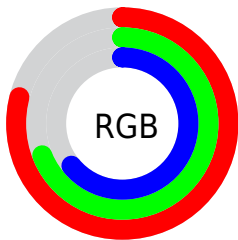
<b>Format</b>	<b>Color</b>
R <sub>Y</sub> B	201, 180, 164
Decimal	13217700
CIE Lab	73.39, 7.61, 9.08
CIE LCh	73, 11.846, 50.055
Yxy	45.7578, 0.3457, 0.3430
Android (android.graphics.Color)	4291407780 (0xFFC9AFA4)
YUV	181.5200, -8.6374, 17.0840
Hunter-Lab	67.6445, 3.3186, 10.9561

# Details

The Hex color **C9AFA4** is a light color, and the websafe version is hex **CC9999**. A complement of this color would be **A4BEC9**, and the grayscale version is **B6B6B6**.

A 20% lighter version of the original color is **FFE7DB**, and **937B70** is the 20% darker color. If you saturate the color by 10%, you get **C9A190**, and if you desaturate by 10%, it is **C9BDB8**.

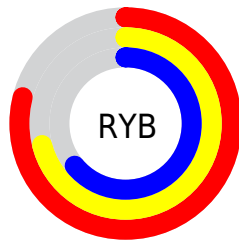
# Distribution



Red (79%)

Green (69%)

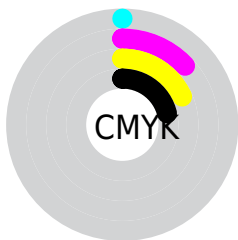
Blue (64%)



Red (79%)

Yellow (71%)

Blue (64%)

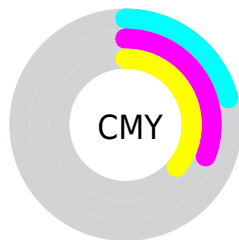


Cyan (0%)

Magenta (13%)

Yellow (18%)

Black (21%)



Cyan (21%)

Magenta (31%)

Yellow (36%)

# Brightness & Saturation Gradients

These gradients show how the Hex color C9AFA4 changes by changing the brightness by 10 percent. The first figure shows a shift by +10% for each color and the second figure -10%.

Similar to the brightness gradients but the following saturation gradients show a change of the Hex color C9AFA4 by changing the saturation by 10% instead.





C9AFA4



C9AFA4

FFFFFF



AD948A



FFE7DB



937B70



FFFFF7



796258



5F4A41



47332B



301E16



1C0600



000000



C9AFA4



C9AFA4

 C9A190

 C9BDB8

 C9937C

 C9CBCC

 C98568

 C9D9E0

 C97754

 C9E7F4

 C96840

 C9F6FF

 C95A2B

 C9FFFF

 C94C17

 C93E03

 C93C00

# Harmonies

## Analogous

The Analogous color harmony consists of three colors that are next to each other on the color wheel.



CCADAD



C9AFA4



C1B29F

# Triad

The Triadic color harmony groups three colors that are evenly spaced from another and form a triangle on the color wheel.



C9AFA4



9EBAB0



B2B3C8

# Complementary

The Complementary color scheme is a pair of colors which are on the opposite of each other on the color wheel.



C9AFA4



A4BEC9

# Split Complementary

Split-complementary colors differ from the complementary color scheme. The scheme consists of three colors, the original color and two neighbors of the complement color.



A5B6C9



C9AFA4



99BBBB

# Square

The Square scheme is like the rectangle color scheme, but the four colors are evenly spaced on the color wheel.



C9AFA4



A9B9A6



9BB9C4



BFAFC2

# Rectangle

The Rectangle color scheme consists of four colors that form a rectangle on the color wheel.



C9AFA4



B9B59F



9BB9C4



ADB4C9



# Sweetspot

The Sweet Spot groups the original color and five complimentary colors.



C9AFA4



FFF4F0



C9A4BF



807977



000000



808080



# Same Dimension

The Same Dimension uses a secret algorithm to generate beautiful new colors.



C9AFA4



FFD8C7



C9C1A4



635C5A



A33100



240B00

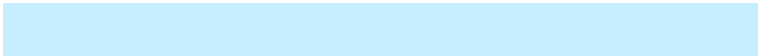


# Inverse Universe

The Inverse Universe completely reimagines the original color for something new.



A4BEC9



C7EEFF



A4ACC9



5A6063



0073A3



001924



# Previews

## White Background



This preview shows how the Hex color C9AFA4 looks on a white background.

## Color Contrast Check

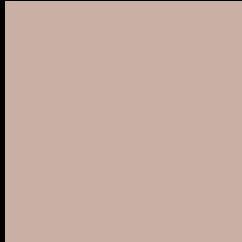
Large Text (above 18pt) WCAG AA × Fail

Any Text WCAG AA × Fail

Large Text (above 18pt) WCAG AAA × Fail

Any Text WCAG AAA × Fail

# Black Background



This preview shows how the Hex color C9AFA4 looks on a black background.

## Color Contrast Check

Large Text (above 18pt) WCAG AA ✓ Pass

Any Text WCAG AA ✓ Pass

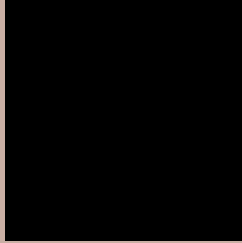
Large Text (above 18pt) WCAG AAA ✓ Pass

Any Text WCAG AAA ✓ Pass

If you want to check with other color combinations, try the [Color Contrast Checker](#).



## Hex C9AFA4 Background



This preview shows how black text looks on a background with the Hex color C9AFA4.

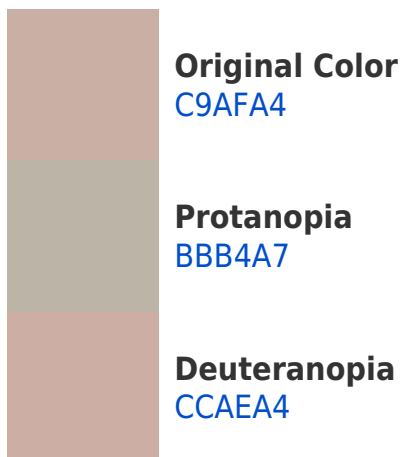


This preview shows how white text looks on a background with the Hex color C9AFA4.

# Color Blindness Simulation

Color vision deficiency is a very complex topic, and I could not describe the different causes any better than Wikipedia does, so if you want to learn more, you should check out their [article about color blindness](#).

## Dichromacy





# Trichromacy



**Original Color**  
C9AFA4

**Protanomaly**  
C0B2A6

**Deuteranomaly**  
CBAEA4

**Tritanomaly**  
CBADB1

# Monochromacy



**Original Color**  
C9AFA4

**Achromatopsia**  
B6B6B6

**Achromatomaly**  
BDB3AF

# CSS Examples

## Text

The CSS property to change the color of the text to Hex C9AFA4 is called "color". The color property can be set on classes, ids or directly on the HTML element.

This example shows how text in the color #C9AFA4 looks like.

```
.text, #text, p{  
    color:#C9AFA4  
}
```

If you want to add a text shadow in that color use the text-shadow property, you can generate a text shadow directly with our [CSS Text Shadow Generator](#).

Here you see how black text with a 4 pixel #C9AFA4 colored shadow looks like.

```
.shadow{ text-shadow: 4px 4px 2px #C9AFA4
}
```

## Border

The CSS property to change the border of an element to Hex C9AFA4 is called "border". The border property can be set on classes, ids or directly on the HTML element.

This example shows the color as border, it can be applied via the CSS property "border" or "border-color".

```
.border, #border, table{ border:4px solid
#C9AFA4 }
```

If only the border color should be changed use the property `border-color`.

```
.border{ border-color:#C9AFA4 }
```

If you want to add a box shadow in that color use:

Here you see how a box with a 4 pixel #C9AFA4 colored shadow looks like.

```
.boxshadow{ -moz-box-shadow:4px 4px 4px  
4px #C9AFA4; -webkit-box-shadow:4px 4px  
4px 4px #C9AFA4; box-shadow:4px 4px 4px  
4px #C9AFA4 }
```

# Background

The CSS property to change the background color of an element to Hex C9AFA4 is called "background". The background property can be set on classes, ids or directly on the HTML element.

```
.background, #background, body{  
background:#C9AFA4 }
```

If only the background color should be changed can be used:

```
.background{ background-color:#C9AFA4 }
```

This example shows the color as background, it is applied via the CSS property "background".

To optimize and compress your CSS code, you can use our [online CSS compressor and optimizer](#) based on csstidy. If you want to create a linear or radial gradient as background or border, check our [CSS Gradient Generator](#).



Hey! You found this booklet interesting? Support Converting Colors with the new Membership Option!

The pro membership hides all ads, plus gives you double the colors in the color bucket, and more awesome pro features!

**[Learn more, Memberships starting at \\$2.50/m!](#)**

**Follow me  
on Twitter!**

@ConvertingColor