

# Converting Colors

Hex(C9B4B7)

Have a look what the booklet for  
Hex(C9B4B7) contains.

<b>Hex(C9B4B7)</b> .....	3
<i><b>Conversions</b></i> .....	4
<i><b>Details</b></i> .....	6
<i><b>Harmonies</b></i> .....	11
<i><b>Previews</b></i> .....	23
<i><b>Color Blindness Simulation</b></i> .....	26
<i><b>CSS Examples</b></i> .....	29

# **Color**

**Hex(C9B4B7)**

# Conversions

## Conversions Part 1

Format	Color
Hex	C9B4B7
RGB	201, 180, 183
RGB Percent	79%, 71%, 72%
CMY	0.2118, 0.2941, 0.2824
CMYK	0.00, 0.10, 0.09, 0.21
HSL	351°, 16%, 75%
HSV	351°, 10%, 79%
XYZ	48.9559, 48.4789, 51.5769
YIQ	186.6210, 11.5530, 5.3850

# Conversions

## Conversions Part 2

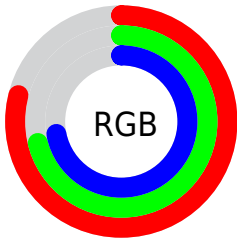
<b>Format</b>	<b>Color</b>
<b>R<sub>YB</sub></b>	201, 180, 183
Decimal	13218999
CIE Lab	75.13, 8.01, 1.21
CIE LCh	75, 8.104, 8.574
Yxy	48.4789, 0.3285, 0.3253
Android (android.graphics.Color)	4291409079 (0xFFC9B4B7)
YUV	186.6210, -1.7852, 12.6104
Hunter-Lab	69.6268, 3.6597, 4.8190

# Details

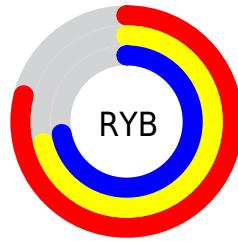
The Hex color **C9B4B7** is a light color, and the websafe version is hex **CCCCCC**. A complement of this color would be **B4C9C6**, and the grayscale version is **BBBBBB**.

A 20% lighter version of the original color is **FFECEF**, and **937F82** is the 20% darker color. If you saturate the color by 10%, you get **C9A0A6**, and if you desaturate by 10%, it is **C9C8C8**.

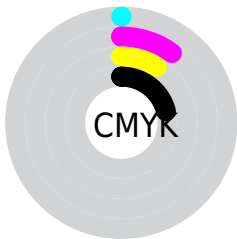
# Distribution



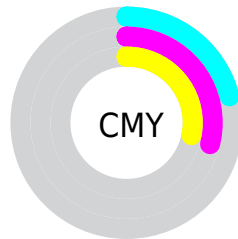
- Red (79%)
- Green (71%)
- Blue (72%)



- Red (79%)
- Yellow (71%)
- Blue (72%)



- Cyan (0%)
- Magenta (10%)
- Yellow (9%)
- Black (21%)



- Cyan (21%)
- Magenta (29%)
- Yellow (28%)

# Brightness & Saturation Gradients

These gradients show how the Hex color C9B4B7 changes by changing the brightness by 10 percent. The first figure shows a shift by +10% for each color and the second figure -10%.

Similar to the brightness gradients but the following saturation gradients show a change of the Hex color C9B4B7 by changing the saturation by 10% instead.



 C9B4B7

FFFFFF

 FFECEF

 C9B4B7

 AE999C

 937F82

 796669

 604E51

 48373A

 322224

 1D0C0F

 000000

 C9B4B7

 C9B4B7

 C9A0A6

 C9C8C8

 C98C95

 C9DCD9

 C97883

 C9F0EB

 C96472

 C9FFFC

 C95061

 C9FFFF

 C93B50

 C9273E

 C9132D

 C9001D

# Harmonies

## Analogous

The Analogous color harmony consists of three colors that are next to each other on the color wheel.



C5B5BF



C9B4B7



C9B5B0

# Triad

The Triadic color harmony groups three colors that are evenly spaced from another and form a triangle on the color wheel.



C9B4B7



B4BBAD



ACBBC7

# Complementary

The Complementary color scheme is a pair of colors which are on the opposite of each other on the color wheel.



C9B4B7



B4C9C6

# Split Complementary

Split-complementary colors differ from the complementary color scheme. The scheme consists of three colors, the original color and two neighbors of the complement color.



A7BDC2



C9B4B7



ACBDB3

# Square

The Square scheme is like the rectangle color scheme, but the four colors are evenly spaced on the color wheel.



C9B4B7



BDB9AA



A8BEBB



B4B9C8

# Rectangle

The Rectangle color scheme consists of four colors that form a rectangle on the color wheel.



C9B4B7



C6B6AC



A8BEBB



AABCC5



# Sweetspot

The Sweet Spot groups the original color and five complimentary colors.



C9B4B7



FFF7F8



C6B4C9



807A7B



000000



808080



# Same Dimension

The Same Dimension uses a secret algorithm to generate beautiful new colors.



C9B4B7



FFDEE3



C9BBB4



635A5B



A30017



240005



# Inverse Universe

The Inverse Universe completely reimagines the original color for something new.



C9B4B7



FFDEE3



B4C2C9



635A5B



A30017

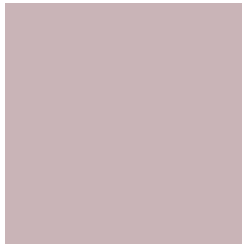


240005



# Previews

## White Background



This preview shows how the Hex color C9B4B7 looks on a white background.

## Color Contrast Check

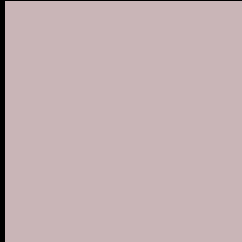
Large Text (above 18pt) WCAG AA × Fail

Any Text WCAG AA × Fail

Large Text (above 18pt) WCAG AAA × Fail

Any Text WCAG AAA × Fail

# Black Background



This preview shows how the Hex color C9B4B7 looks on a black background.

## Color Contrast Check

Large Text (above 18pt) WCAG AA ✓ Pass

Any Text WCAG AA ✓ Pass

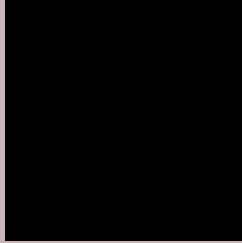
Large Text (above 18pt) WCAG AAA ✓ Pass

Any Text WCAG AAA ✓ Pass

If you want to check with other color combinations, try the [Color Contrast Checker](#).



## Hex C9B4B7 Background



This preview shows how black text looks on a background with the Hex color C9B4B7.



This preview shows how white text looks on a background with the Hex color C9B4B7.

# Color Blindness Simulation

Color vision deficiency is a very complex topic, and I could not describe the different causes any better than Wikipedia does, so if you want to learn more, you should check out their [article about color blindness](#).

## Dichromacy





# Trichromacy



**Original Color**  
C9B4B7

**Protanomaly**  
C1B7B8

**Deuteranomaly**  
CAB3B7

**Tritanomaly**  
CAB3BD

# Monochromacy



**Original Color**  
C9B4B7

**Achromatopsia**  
BBBBBB

**Achromatomaly**  
C0B8BA

# CSS Examples

## Text

The CSS property to change the color of the text to Hex C9B4B7 is called "color". The color property can be set on classes, ids or directly on the HTML element.

This example shows how text in the color #C9B4B7 looks like.

```
.text, #text, p{  
    color:#C9B4B7  
}
```

If you want to add a text shadow in that color use the text-shadow property, you can generate a text shadow directly with our [CSS Text Shadow Generator](#).

Here you see how black text with a 4 pixel #C9B4B7 colored shadow looks like.

```
.shadow{ text-shadow: 4px 4px 2px #C9B4B7
}
```

## Border

The CSS property to change the border of an element to Hex C9B4B7 is called "border". The border property can be set on classes, ids or directly on the HTML element.

This example shows the color as border, it can be applied via the CSS property "border" or "border-color".

```
.border, #border, table{ border:4px solid
#C9B4B7 }
```

If only the border color should be changed use the property `border-color`.

```
.border{ border-color:#C9B4B7 }
```

If you want to add a box shadow in that color use:

Here you see how a box with a 4 pixel `#C9B4B7` colored shadow looks like.

```
.boxshadow{ -moz-box-shadow:4px 4px 4px  
4px #C9B4B7; -webkit-box-shadow:4px 4px  
4px 4px #C9B4B7; box-shadow:4px 4px 4px  
4px #C9B4B7 }
```

# Background

The CSS property to change the background color of an element to Hex C9B4B7 is called "background". The background property can be set on classes, ids or directly on the HTML element.

```
.background, #background, body{  
background:#C9B4B7 }
```

If only the background color should be changed can be used:

```
.background{ background-color:#C9B4B7 }
```

This example shows the color as background, it is applied via the CSS property "background".

To optimize and compress your CSS code, you can use our [online CSS compressor and optimizer](#) based on csstidy. If you want to create a linear or radial gradient as background or border, check our [CSS Gradient Generator](#).



Hey! You found this booklet interesting? Support Converting Colors with the new Membership Option!

The pro membership hides all ads, plus gives you double the colors in the color bucket, and more awesome pro features!

**[Learn more, Memberships starting at \\$2.50/m!](#)**

**Follow me  
on Twitter!**

@ConvertingColor