

Converting Colors

Hex(C9B6BE)

Have a look what the booklet for
Hex(C9B6BE) contains.

Hex(C9B6BE)	3
<i>Conversions</i>	4
<i>Details</i>	6
<i>Harmonies</i>	11
<i>Previews</i>	23
<i>Color Blindness Simulation</i>	26
<i>CSS Examples</i>	29

Color

Hex(C9B6BE)

Conversions

Conversions Part 1

Format	Color
Hex	C9B6BE
RGB	201, 182, 190
RGB Percent	79%, 71%, 75%
CMY	0.2118, 0.2863, 0.2549
CMYK	0.00, 0.09, 0.05, 0.21
HSL	335°, 15%, 75%
HSV	335°, 9%, 79%
XYZ	50.1096, 49.5911, 55.6462
YIQ	188.5930, 8.7560, 6.5160

Conversions

Conversions Part 2

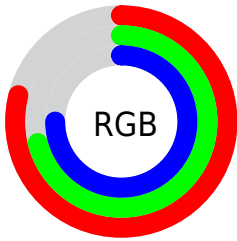
Format	Color
R _Y B	201, 182, 190
Decimal	13219518
CIE Lab	75.82, 8.16, -1.60
CIE LCh	76, 8.311, 348.927
Yxy	49.5911, 0.3226, 0.3192
Android (android.graphics.Color)	4291409598 (0xFFC9B6BE)
YUV	188.5930, 0.6937, 10.8809
Hunter-Lab	70.4210, 3.7790, 2.4441

Details

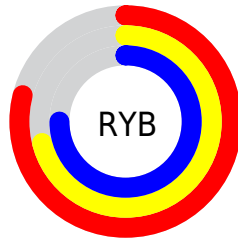
The Hex color **C9B6BE** is a light color, and the websafe version is hex **CCCCCC**. A complement of this color would be **B6C9C1**, and the grayscale version is **BDBDBD**.

A 20% lighter version of the original color is **FFEEF6**, and **938189** is the 20% darker color. If you saturate the color by 10%, you get **C9A2B2**, and if you desaturate by 10%, it is **C9CACA**.

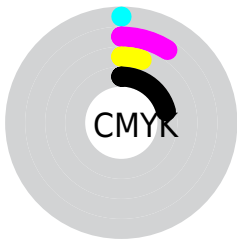
Distribution



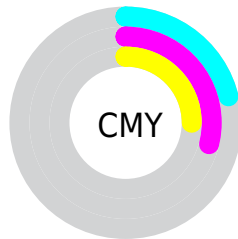
- Red (79%)
- Green (71%)
- Blue (75%)



- Red (79%)
- Yellow (71%)
- Blue (75%)



- Cyan (0%)
- Magenta (9%)
- Yellow (5%)
- Black (21%)



- Cyan (21%)
- Magenta (29%)
- Yellow (25%)

Brightness & Saturation Gradients

These gradients show how the Hex color C9B6BE changes by changing the brightness by 10 percent. The first figure shows a shift by +10% for each color and the second figure -10%.

Similar to the brightness gradients but the following saturation gradients show a change of the Hex color C9B6BE by changing the saturation by 10% instead.

 C9B6BE

 C9B6BE

FFFFFF

 AE9BA3

 FFEEF6

 938189

 79686F

 605057

 483940

 32232A

 1D0E15

 000000

 C9B6BE

 C9B6BE

 C9A2B2

 C9CACA

 C98EA7

 C9DED5

 C97A9B

 C9F2E1

 C9668F

 C9FFED

 C95284

 C9FFF8

 C93D78

 C9FFFF

 C9296D

 C91561

 C90155

Harmonies

Analogous

The Analogous color harmony consists of three colors that are next to each other on the color wheel.



C2B7C5



C9B6BE



CCB6B6

Triad

The Triadic color harmony groups three colors that are evenly spaced from another and form a triangle on the color wheel.



C9B6BE



BCBCAC



AABEC6

Complementary

The Complementary color scheme is a pair of colors which are on the opposite of each other on the color wheel.



C9B6BE



B6C9C1

Split Complementary

Split-complementary colors differ from the complementary color scheme. The scheme consists of three colors, the original color and two neighbors of the complement color.



A8BFBF



C9B6BE



B3BEB1

Square

The Square scheme is like the rectangle color scheme, but the four colors are evenly spaced on the color wheel.



C9B6BE



C4B9AC



ACBFB8



B0BCCA

Rectangle

The Rectangle color scheme consists of four colors that form a rectangle on the color wheel.



C9B6BE



CBB7B2



ACBFB8



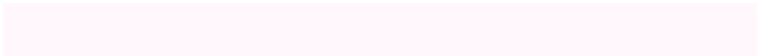
A9BFC4

Sweetspot

The Sweet Spot groups the original color and five complimentary colors.



C9B6BE



FFF7FB



C1B6C9



807A7D



000000



808080

Same Dimension

The Same Dimension uses a secret algorithm to generate beautiful new colors.



C9B6BE



FFE3EF



C9B7B6



635A5E



A30045



24000F

Inverse Universe

The Inverse Universe completely reimagines the original color for something new.



C9B6BE



FFE3EF



B6C8C9



635A5E



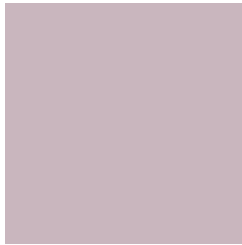
A30045



24000F

Previews

White Background



This preview shows how the Hex color C9B6BE looks on a white background.

Color Contrast Check

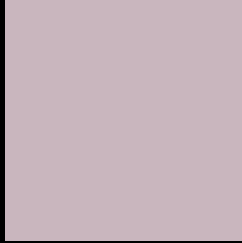
Large Text (above 18pt) WCAG AA × Fail

Any Text WCAG AA × Fail

Large Text (above 18pt) WCAG AAA × Fail

Any Text WCAG AAA × Fail

Black Background



This preview shows how the Hex color C9B6BE looks on a black background.

Color Contrast Check

Large Text (above 18pt) WCAG AA ✓ Pass

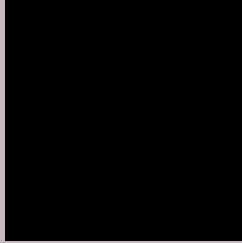
Any Text WCAG AA ✓ Pass

Large Text (above 18pt) WCAG AAA ✓ Pass

Any Text WCAG AAA ✓ Pass

If you want to check with other color combinations, try the [Color Contrast Checker](#).

Hex C9B6BE Background



This preview shows how black text looks on a background with the Hex color C9B6BE.



This preview shows how white text looks on a background with the Hex color C9B6BE.

Color Blindness Simulation

Color vision deficiency is a very complex topic, and I could not describe the different causes any better than Wikipedia does, so if you want to learn more, you should check out their [article about color blindness](#).

Dichromacy



Original Color
C9B6BE

Protanopia
BDBAC0

Deuteranopia
CBB5BE

Trichromacy



Original Color
C9B6BE

Protanomaly
C1B9BF

Deuteranomaly
CAB5BE

Tritanomaly
CAB5C1

Monochromacy



Original Color
C9B6BE

Achromatopsia
BDBDBD

Achromatomaly
C1BABD

CSS Examples

Text

The CSS property to change the color of the text to Hex C9B6BE is called "color". The color property can be set on classes, ids or directly on the HTML element.

This example shows how text in the color #C9B6BE looks like.

```
.text, #text, p{  
    color:#C9B6BE  
}
```

If you want to add a text shadow in that color use the text-shadow property, you can generate a text shadow directly with our [CSS Text Shadow Generator](#).

Here you see how black text with a 4 pixel #C9B6BE colored shadow looks like.

```
.shadow{ text-shadow: 4px 4px 2px #C9B6BE }  
}
```

Border

The CSS property to change the border of an element to Hex C9B6BE is called "border". The border property can be set on classes, ids or directly on the HTML element.

This example shows the color as border, it can be applied via the CSS property "border" or "border-color".

```
.border, #border, table{ border:4px solid #C9B6BE }  
}
```

If only the border color should be changed use the property `border-color`.

```
.border{ border-color:#C9B6BE }
```

If you want to add a box shadow in that color use:

Here you see how a box with a 4 pixel #C9B6BE colored shadow looks like.

```
.boxshadow{ -moz-box-shadow:4px 4px 4px  
4px #C9B6BE; -webkit-box-shadow:4px 4px  
4px 4px #C9B6BE; box-shadow:4px 4px 4px  
4px #C9B6BE }
```

Background

The CSS property to change the background color of an element to Hex C9B6BE is called "background". The background property can be set on classes, ids or directly on the HTML element.

```
.background, #background, body{  
background:#C9B6BE }
```

If only the background color should be changed can be used:

```
.background{ background-color:#C9B6BE }
```

This example shows the color as background, it is applied via the CSS property "background".

To optimize and compress your CSS code, you can use our [online CSS compressor and optimizer](#) based on csstidy. If you want to create a linear or radial gradient as background or border, check our [CSS Gradient Generator](#).

Hey! You found this booklet interesting? Support Converting Colors with the new Membership Option!

The pro membership hides all ads, plus gives you double the colors in the color bucket, and more awesome pro features!

[Learn more, Memberships starting at \\$2.50/m!](#)

**Follow me
on Twitter!**

@ConvertingColor