

Converting Colors

Hex(CA3E76)

Have a look what the booklet for
Hex(CA3E76) contains.

Hex(CA3E76)	3
<i>Conversions</i>	4
<i>Details</i>	6
<i>Harmonies</i>	11
<i>Previews</i>	23
<i>Color Blindness Simulation</i>	26
<i>CSS Examples</i>	29

Color

Hex(CA3E76)

Conversions

Conversions Part 1

Format	Color
Hex	CA3E76
RGB	202, 62, 118
RGB Percent	79%, 24%, 46%
CMY	0.2078, 0.7569, 0.5373
CMYK	0.00, 0.69, 0.42, 0.21
HSL	336°, 57%, 52%
HSV	336°, 69%, 79%
XYZ	29.3498, 17.3098, 18.9338
YIQ	110.2440, 65.4640, 47.0960

Conversions

Conversions Part 2

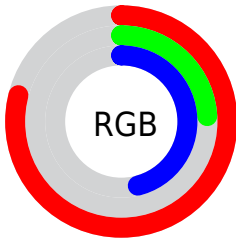
Format	Color
R_{YB}	202, 62, 118
Decimal	13254262
CIE Lab	48.65, 59.30, -0.17
CIE LCh	49, 59.300, 359.836
Yxy	17.3098, 0.4475, 0.2639
Android (android.graphics.Color)	4291444342 (0xFFCA3E76)
YUV	110.2440, 3.8237, 80.4700
Hunter-Lab	41.6051, 53.1117, 2.1417

Details

The Hex color **CA3E76** is a dark color, and the websafe version is hex **CC3366**. The color can be described as dark muted rose. A complement of this color would be **3ECA92**, and the grayscale version is **6E6E6E**.

A 20% lighter version of the original color is **FF77AA**, and **8F0046** is the 20% darker color. If you saturate the color by 10%, you get **CA2A6A**, and if you desaturate by 10%, it is **CA5282**.

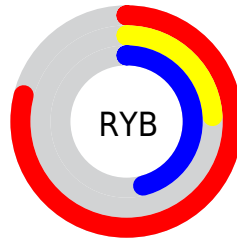
Distribution



Red (79%)

Green (24%)

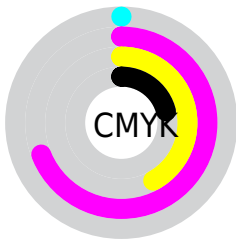
Blue (46%)



Red (79%)

Yellow (24%)

Blue (46%)

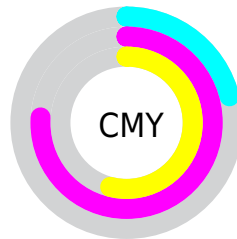


Cyan (0%)

Magenta (69%)

Yellow (42%)

Black (21%)



Cyan (21%)

Magenta (76%)

Yellow (54%)

Brightness & Saturation Gradients

These gradients show how the Hex color CA3E76 changes by changing the brightness by 10 percent. The first figure shows a shift by +10% for each color and the second figure -10%.

Similar to the brightness gradients but the following saturation gradients show a change of the Hex color CA3E76 by changing the saturation by 10% instead.

CA3E76

CA3E76

FFFFFF

AC1D5D

FF77AA

8F0046

FF93C5

720030

FFAFE1

55001B

FFCCFE

3C0003

FFEAFF

160000

000000

CA3E76

CA3E76

CA2A6A

CA5282

■ CA165E

■ CA668E

■ CA0152

■ CA7B9A

■ CA0051

■ CA8FA6

■ CAA3B3

■ CAB7BF

■ CACBCB

■ CAE0D7

■ CAF4E3

Harmonies

Analogous

The Analogous color harmony consists of three colors that are next to each other on the color wheel.



AF4EA7



CA3E76



C94745

Triad

The Triadic color harmony groups three colors that are evenly spaced from another and form a triangle on the color wheel.



CA3E76



597F08



0085CA

Complementary

The Complementary color scheme is a pair of colors which are on the opposite of each other on the color wheel.



CA3E76



3ECA92

Split Complementary

Split-complementary colors differ from the complementary color scheme. The scheme consists of three colors, the original color and two neighbors of the complement color.



008AA4



CA3E76



00873E

Square

The Square scheme is like the rectangle color scheme, but the four colors are evenly spaced on the color wheel.



CA3E76



8B7100



008A72



007AD8

Rectangle

The Rectangle color scheme consists of four colors that form a rectangle on the color wheel.



CA3E76



BB5526



008A72



0087C0

Sweetspot

The Sweet Spot groups the original color and five complimentary colors.



CA3E76



FFC9DF



923ECA



80606C



000000



808080

Same Dimension

The Same Dimension uses a secret algorithm to generate beautiful new colors.



CA3E76



FF2B80



CA4C3E



665C60



A60042



26000F

Inverse Universe

The Inverse Universe completely reimagines the original color for something new.



CA3E76



FF2B80



3EBCCA



665C60



A60042



26000F

Previews

White Background



This preview shows how the Hex color CA3E76 looks on a white background.

Color Contrast Check

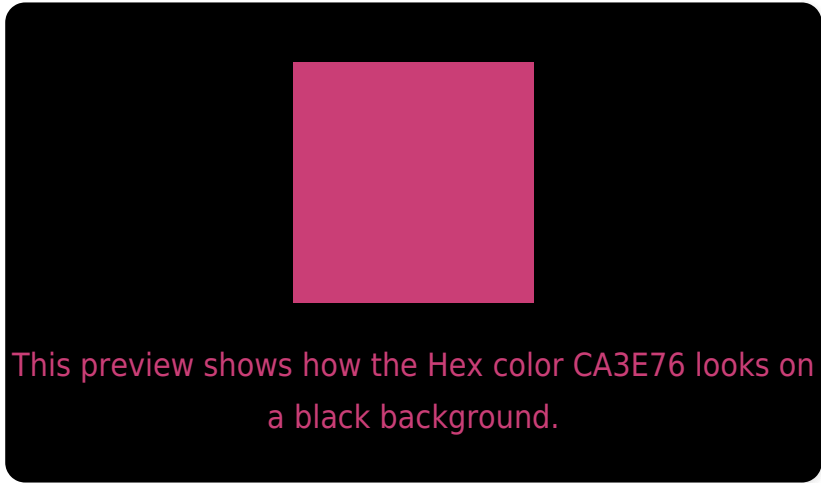
Large Text (above 18pt) WCAG AA ✓ Pass

Any Text WCAG AA ✓ Pass

Large Text (above 18pt) WCAG AAA ✓ Pass

Any Text WCAG AAA × Fail

Black Background



Color Contrast Check

Large Text (above 18pt) WCAG AA ✓ Pass

Any Text WCAG AA × Fail

Large Text (above 18pt) WCAG AAA × Fail

Any Text WCAG AAA × Fail

If you want to check with other color combinations, try the [Color Contrast Checker](#).

Hex CA3E76 Background



This preview shows how black text looks on a background with the Hex color CA3E76.



This preview shows how white text looks on a background with the Hex color CA3E76.

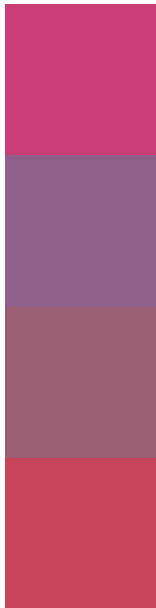
Color Blindness Simulation

Color vision deficiency is a very complex topic, and I could not describe the different causes any better than Wikipedia does, so if you want to learn more, you should check out their [article about color blindness](#).

Dichromacy



Trichromacy



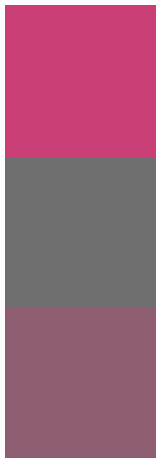
Original Color
CA3E76

Protanomaly
8E608B

Deuteranomaly
9C5E72

Tritanomaly
C8445B

Monochromacy



Original Color
CA3E76

Achromatopsia
6E6E6E

Achromatomaly
8F5D71

CSS Examples

Text

The CSS property to change the color of the text to Hex CA3E76 is called "color". The color property can be set on classes, ids or directly on the HTML element.

This example shows how text in the color #CA3E76 looks like.

```
.text, #text, p{  
    color:#CA3E76  
}
```

If you want to add a text shadow in that color use the text-shadow property, you can generate a text shadow directly with our [CSS Text Shadow Generator](#).

Here you see how black text with a 4 pixel #CA3E76 colored shadow looks like.

```
.shadow{ text-shadow: 4px 4px 2px #CA3E76
}
```

Border

The CSS property to change the border of an element to Hex CA3E76 is called "border". The border property can be set on classes, ids or directly on the HTML element.

This example shows the color as border, it can be applied via the CSS property "border" or "border-color".

```
.border, #border, table{ border:4px solid
#CA3E76 }
```

If only the border color should be changed use the property `border-color`.

```
.border{ border-color:#CA3E76 }
```

If you want to add a box shadow in that color use:

Here you see how a box with a 4 pixel #CA3E76 colored shadow looks like.

```
.boxshadow{ -moz-box-shadow:4px 4px 4px  
4px #CA3E76; -webkit-box-shadow:4px 4px  
4px 4px #CA3E76; box-shadow:4px 4px 4px  
4px #CA3E76 }
```

Background

The CSS property to change the background color of an element to Hex CA3E76 is called "background". The background property can be set on classes, ids or directly on the HTML element.

```
.background, #background, body{  
background:#CA3E76 }
```

If only the background color should be changed can be used:

```
.background{ background-color:#CA3E76 }
```

This example shows the color as background, it is applied via the CSS property "background".

To optimize and compress your CSS code, you can use our [online CSS compressor and optimizer](#) based on csstidy. If you want to create a linear or radial gradient as background or border, check our [CSS Gradient Generator](#).

Hey! You found this booklet interesting? Support Converting Colors with the new Membership Option!

The pro membership hides all ads, plus gives you double the colors in the color bucket, and more awesome pro features!

[Learn more, Memberships starting at \\$2.50/m!](#)

**Follow me
on Twitter!**

@ConvertingColor