

# Converting Colors

Hex(CA5586)

Have a look what the booklet for  
Hex(CA5586) contains.

<b>Hex(CA5586)</b> .....	3
<b><i>Conversions</i></b> .....	4
<b><i>Details</i></b> .....	6
<b><i>Harmonies</i></b> .....	11
<b><i>Previews</i></b> .....	23
<b><i>Color Blindness Simulation</i></b> .....	26
<b><i>CSS Examples</i></b> .....	29

# Color

**Hex(CA5586)**

# Conversions

## Conversions Part 1

<b>Format</b>	<b>Color</b>
Hex	CA5586
RGB	202, 85, 134
RGB Percent	79%, 33%, 53%
CMY	0.2078, 0.6667, 0.4745
CMYK	0.00, 0.58, 0.34, 0.21
HSL	335°, 52%, 56%
HSV	335°, 58%, 79%
XYZ	31.9087, 20.7748, 24.8824
YIQ	125.5690, 54.0030, 40.0430

# Conversions

## Conversions Part 2

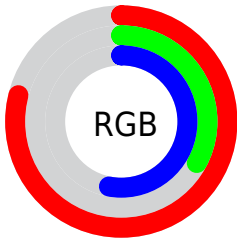
<b>Format</b>	<b>Color</b>
<b>R<sub>YB</sub></b>	202, 85, 134
Decimal	13260166
CIE <sub>Lab</sub>	52.70, 51.37, -3.82
CIE <sub>LCh</sub>	53, 51.517, 355.743
Yxy	20.7748, 0.4114, 0.2678
Android (android.graphics.Color)	4291450246 (0xFFCA5586)
YUV	125.5690, 4.1565, 67.0300
Hunter-Lab	45.5794, 45.1984, -0.4617

# Details

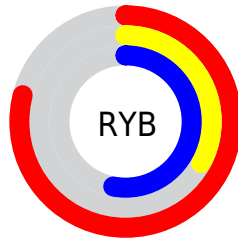
The Hex color **CA5586** is a dark color, and the websafe version is hex **CC6699**. The color can be described as middle muted rose. A complement of this color would be **55CA99**, and the grayscale version is **7D7D7D**.

A 20% lighter version of the original color is **FF8BBB**, and **901B55** is the 20% darker color. If you saturate the color by 10%, you get **CA417A**, and if you desaturate by 10%, it is **CA6992**.

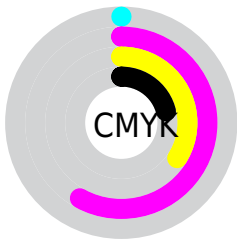
# Distribution



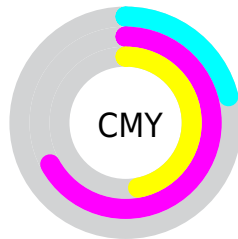
- Red (79%)
- Green (33%)
- Blue (53%)



- Red (79%)
- Yellow (33%)
- Blue (53%)



- Cyan (0%)
- Magenta (58%)
- Yellow (34%)
- Black (21%)



- Cyan (21%)
- Magenta (67%)
- Yellow (47%)

# Brightness & Saturation Gradients

These gradients show how the Hex color CA5586 changes by changing the brightness by 10 percent. The first figure shows a shift by +10% for each color and the second figure -10%.

Similar to the brightness gradients but the following saturation gradients show a change of the Hex color CA5586 by changing the saturation by 10% instead.



CA5586

CA5586

FFFFFF

AD3A6D

FF8BBB

901B55

FFA7D7

74003D

FFC3F3

580028

FFE0FF

3F0013

FFFDFF

220001

000000

CA5586

CA5586

CA417A

CA6992

CA2D6F

CA7D9D

CA1863

CA92A9

CA0457

CAA6B5

CA0055

CABAC1

CACECC

CAE2D8

CAF7E4

CAFFF0

# Harmonies

## Analogous

The Analogous color harmony consists of three colors that are next to each other on the color wheel.



AE62B0



CA5586



CD585A

# Triad

The Triadic color harmony groups three colors that are evenly spaced from another and form a triangle on the color wheel.



CA5586



708727



008FC6

# Complementary

The Complementary color scheme is a pair of colors which are on the opposite of each other on the color wheel.



CA5586



55CA99

# Split Complementary

Split-complementary colors differ from the complementary color scheme. The scheme consists of three colors, the original color and two neighbors of the complement color.



0093A3



CA5586



348F49

# Square

The Square scheme is like the rectangle color scheme, but the four colors are evenly spaced on the color wheel.



CA5586



9A791D



009376



0085D6

# Rectangle

The Rectangle color scheme consists of four colors that form a rectangle on the color wheel.



CA5586



C36240



009376



0091BC



# Sweetspot

The Sweet Spot groups the original color and five complimentary colors.



CA5586



FFD4E6



9755CA



806671



000000



808080



# Same Dimension

The Same Dimension uses a secret algorithm to generate beautiful new colors.



CA5586



FF4D97



CA5D55



665C60



A60045



260010



# Inverse Universe

The Inverse Universe completely reimagines the original color for something new.



CA5586



FF4D97



55C2CA



665C60



A60045



260010



# Previews

## White Background



This preview shows how the Hex color CA5586 looks on a white background.

## Color Contrast Check

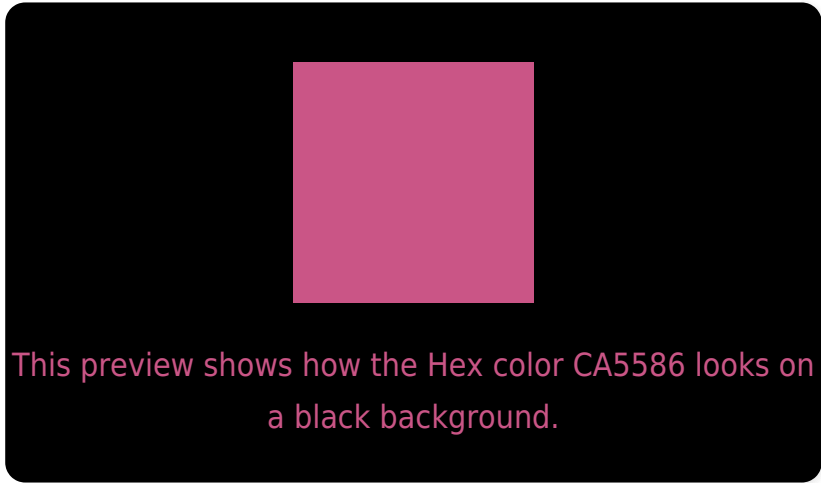
Large Text (above 18pt) WCAG AA ✓ Pass

Any Text WCAG AA × Fail

Large Text (above 18pt) WCAG AAA × Fail

Any Text WCAG AAA × Fail

# Black Background



## Color Contrast Check

Large Text (above 18pt) WCAG AA ✓ Pass

Any Text WCAG AA ✓ Pass

Large Text (above 18pt) WCAG AAA ✓ Pass

Any Text WCAG AAA × Fail

If you want to check with other color combinations, try the [Color Contrast Checker](#).



## Hex CA5586 Background



This preview shows how black text looks on a background with the Hex color CA5586.

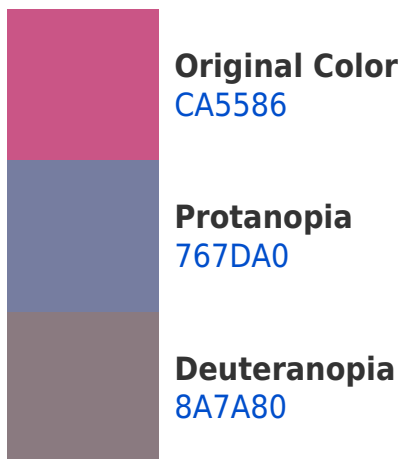



This preview shows how white text looks on a background with the Hex color CA5586.

# Color Blindness Simulation

Color vision deficiency is a very complex topic, and I could not describe the different causes any better than Wikipedia does, so if you want to learn more, you should check out their [article about color blindness](#).

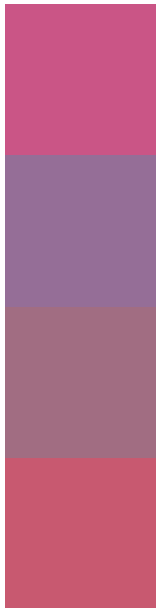
## Dichromacy





**Tritanopia**  
C75C63

# Trichromacy



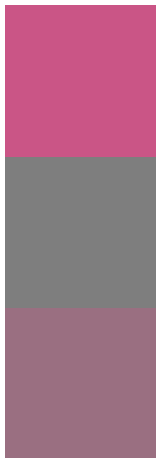
**Original Color**  
CA5586

**Protanomaly**  
956E97

**Deuteranomaly**  
A16D82

**Tritanomaly**  
C85970

# Monochromacy



**Original Color**  
CA5586

**Achromatopsia**  
7E7E7E

**Achromatomaly**  
9A6F81

# CSS Examples

## Text

The CSS property to change the color of the text to Hex CA5586 is called "color". The color property can be set on classes, ids or directly on the HTML element.

This example shows how text in the color #CA5586 looks like.

```
.text, #text, p{  
    color:#CA5586  
}
```

If you want to add a text shadow in that color use the text-shadow property, you can generate a text shadow directly with our [CSS Text Shadow Generator](#).

Here you see how black text with a 4 pixel #CA5586 colored shadow looks like.

```
.shadow{ text-shadow: 4px 4px 2px #CA5586  
}
```

## Border

The CSS property to change the border of an element to Hex CA5586 is called "border". The border property can be set on classes, ids or directly on the HTML element.

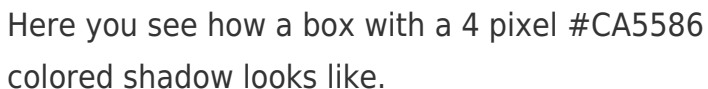
This example shows the color as border, it can be applied via the CSS property "border" or "border-color".

```
.border, #border, table{ border:4px solid  
#CA5586 }
```

If only the border color should be changed use the property `border-color`.

```
.border{ border-color:#CA5586 }
```

If you want to add a box shadow in that color use:



Here you see how a box with a 4 pixel `#CA5586` colored shadow looks like.

```
.boxshadow{ -moz-box-shadow:4px 4px 4px  
4px #CA5586; -webkit-box-shadow:4px 4px  
4px 4px #CA5586; box-shadow:4px 4px 4px  
4px #CA5586 }
```

# Background

The CSS property to change the background color of an element to Hex CA5586 is called "background". The background property can be set on classes, ids or directly on the HTML element.

```
.background, #background, body{  
background:#CA5586 }
```

If only the background color should be changed can be used:

```
.background{ background-color:#CA5586 }
```

This example shows the color as background, it is applied via the CSS property "background".

To optimize and compress your CSS code, you can use our [online CSS compressor and optimizer](#) based on csstidy. If you want to create a linear or radial gradient as background or border, check our [CSS Gradient Generator](#).



Hey! You found this booklet interesting? Support Converting Colors with the new Membership Option!

The pro membership hides all ads, plus gives you double the colors in the color bucket, and more awesome pro features!

**[Learn more, Memberships starting at \\$2.50/m!](#)**

**Follow me  
on Twitter!**

@ConvertingColor