

Converting Colors

Hex(CA7775)

Have a look what the booklet for
Hex(CA7775) contains.

Hex(CA7775)	3
<i>Conversions</i>	4
<i>Details</i>	6
<i>Harmonies</i>	11
<i>Previews</i>	23
<i>Color Blindness Simulation</i>	26
<i>CSS Examples</i>	29

Color

Hex(CA7775)

Conversions

Conversions Part 1

Format	Color
Hex	CA7775
RGB	202, 119, 117
RGB Percent	79%, 47%, 46%
CMY	0.2078, 0.5333, 0.5412
CMYK	0.00, 0.41, 0.42, 0.21
HSL	1°, 45%, 63%
HSV	1°, 42%, 79%
XYZ	34.1648, 27.0346, 20.2471
YIQ	143.5890, 50.1100, 16.9740

Conversions

Conversions Part 2

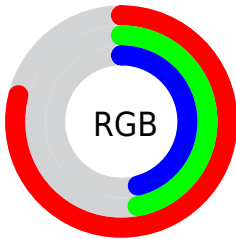
Format	Color
R_{YB}	202, 119, 117
Decimal	13268853
CIE _{Lab}	59.01, 32.21, 15.17
CIE _{LCh}	59, 35.598, 25.215
Yxy	27.0346, 0.4195, 0.3319
Android (android.graphics.Color)	4291458933 (0xFFCA7775)
YUV	143.5890, -13.1084, 51.2264
Hunter-Lab	51.9948, 26.2983, 13.3084

Details

The Hex color **CA7775** is a dark color, and the websafe version is hex **CC6666**. A complement of this color would be **75C8CA**, and the grayscale version is **909090**.

A 20% lighter version of the original color is **FFACA9**, and **914545** is the 20% darker color. If you saturate the color by 10%, you get **CA6361**, and if you desaturate by 10%, it is **CA8B89**.

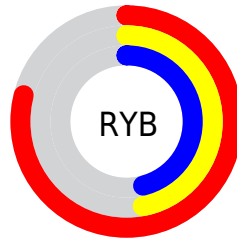
Distribution



Red (79%)

Green (47%)

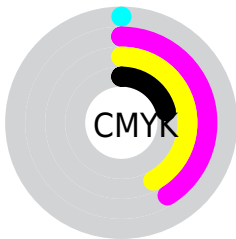
Blue (46%)



Red (79%)

Yellow (47%)

Blue (46%)

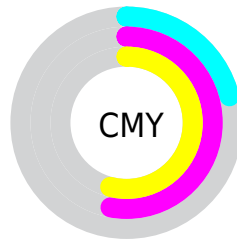


Cyan (0%)

Magenta (41%)

Yellow (42%)

Black (21%)



Cyan (21%)

Magenta (53%)

Yellow (54%)

Brightness & Saturation Gradients

These gradients show how the Hex color CA7775 changes by changing the brightness by 10 percent. The first figure shows a shift by +10% for each color and the second figure -10%.

Similar to the brightness gradients but the following saturation gradients show a change of the Hex color CA7775 by changing the saturation by 10% instead.

 CA7775

 CA7775

FFFFFF

 AD5D5C

 FFACA9

 914545

 FFC8C4

 752C2F

 FFE4E0

 5A141A

FFFFFFD

 410000

 290001

 000000

 CA7775

 CA7775

 CA6361

 CA8B89

CA504D

CA9E9D

CA3C38

CAB2B2

CA2824

CAC6C6

CA1410

CADADA

CA0500

CAEDEE

CAFFFF

Harmonies

Analogous

The Analogous color harmony consists of three colors that are next to each other on the color wheel.



C67694



CA7775



BE7F5C

Triad

The Triadic color harmony groups three colors that are evenly spaced from another and form a triangle on the color wheel.



CA7775



629B69



5593CC

Complementary

The Complementary color scheme is a pair of colors which are on the opposite of each other on the color wheel.



CA7775



75C8CA

Split Complementary

Split-complementary colors differ from the complementary color scheme. The scheme consists of three colors, the original color and two neighbors of the complement color.



009AC0



CA7775



359E88

Square

The Square scheme is like the rectangle color scheme, but the four colors are evenly spaced on the color wheel.



CA7775



879454



009EA8



8A88C6

Rectangle

The Rectangle color scheme consists of four colors that form a rectangle on the color wheel.



CA7775



AF8752



009EA8



4096CA

Sweetspot

The Sweet Spot groups the original color and five complimentary colors.



CA7775



FFDFDE



CA75C9



806C6B



000000



808080

Same Dimension

The Same Dimension uses a secret algorithm to generate beautiful new colors.



CA7775



FF8380



CAA175



665C5C



A60400



260100

Inverse Universe

The Inverse Universe completely reimagines the original color for something new.



75C8CA



80FCFF



759ECA



5C6666



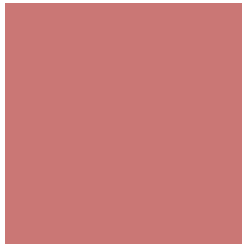
00A2A6



002526

Previews

White Background



This preview shows how the Hex color CA7775 looks on a white background.

Color Contrast Check

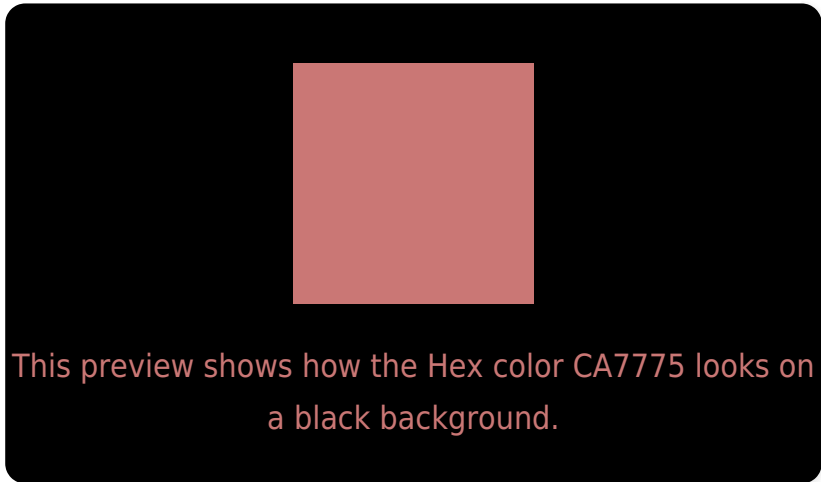
Large Text (above 18pt) WCAG AA ✓ Pass

Any Text WCAG AA × Fail

Large Text (above 18pt) WCAG AAA × Fail

Any Text WCAG AAA × Fail

Black Background



Color Contrast Check

Large Text (above 18pt) WCAG AA ✓ Pass

Any Text WCAG AA ✓ Pass

Large Text (above 18pt) WCAG AAA ✓ Pass

Any Text WCAG AAA × Fail

If you want to check with other color combinations, try the [Color Contrast Checker](#).

Hex CA7775 Background



This preview shows how black text looks on a background with the Hex color CA7775.



This preview shows how white text looks on a background with the Hex color CA7775.

Color Blindness Simulation

Color vision deficiency is a very complex topic, and I could not describe the different causes any better than Wikipedia does, so if you want to learn more, you should check out their [article about color blindness](#).

Dichromacy



Original Color
CA7775

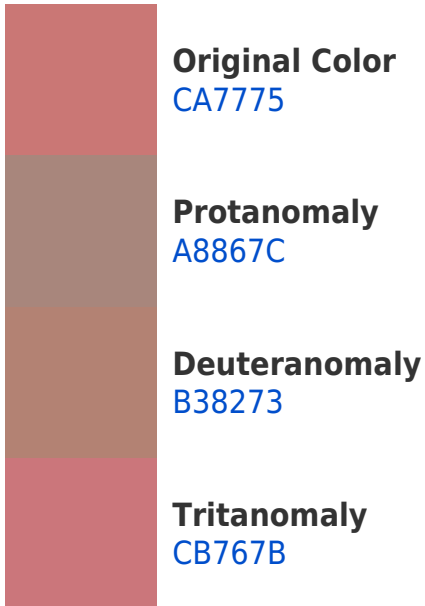
Protanopia
948E80

Deuteranopia
A68972

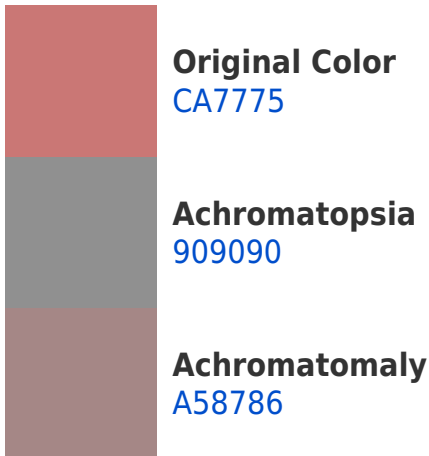


Tritanopia
CB767E

Trichromacy



Monochromacy



CSS Examples

Text

The CSS property to change the color of the text to Hex CA7775 is called "color". The color property can be set on classes, ids or directly on the HTML element.

This example shows how text in the color #CA7775 looks like.

```
.text, #text, p{  
    color:#CA7775  
}
```

If you want to add a text shadow in that color use the text-shadow property, you can generate a text shadow directly with our [CSS Text Shadow Generator](#).

Here you see how black text with a 4 pixel #CA7775 colored shadow looks like.

```
.shadow{ text-shadow: 4px 4px 2px #CA7775
}
```

Border

The CSS property to change the border of an element to Hex CA7775 is called "border". The border property can be set on classes, ids or directly on the HTML element.

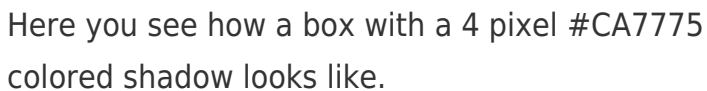
This example shows the color as border, it can be applied via the CSS property "border" or "border-color".

```
.border, #border, table{ border:4px solid
#CA7775 }
```

If only the border color should be changed use the property `border-color`.

```
.border{ border-color:#CA7775 }
```

If you want to add a box shadow in that color use:



Here you see how a box with a 4 pixel `#CA7775` colored shadow looks like.

```
.boxshadow{ -moz-box-shadow:4px 4px 4px  
4px #CA7775; -webkit-box-shadow:4px 4px  
4px 4px #CA7775; box-shadow:4px 4px 4px  
4px #CA7775 }
```

Background

The CSS property to change the background color of an element to Hex CA7775 is called "background". The background property can be set on classes, ids or directly on the HTML element.

```
.background, #background, body{  
background:#CA7775 }
```

If only the background color should be changed can be used:

```
.background{ background-color:#CA7775 }
```

This example shows the color as background, it is applied via the CSS property "background".

To optimize and compress your CSS code, you can use our [online CSS compressor and optimizer](#) based on csstidy. If you want to create a linear or radial gradient as background or border, check our [CSS Gradient Generator](#).

Hey! You found this booklet interesting? Support Converting Colors with the new Membership Option!

The pro membership hides all ads, plus gives you double the colors in the color bucket, and more awesome pro features!

[Learn more, Memberships starting at \\$2.50/m!](#)

**Follow me
on Twitter!**

@ConvertingColor