

Converting Colors

Hex(CA8181)

Have a look what the booklet for
Hex(CA8181) contains.

Hex(CA8181)	3
<i>Conversions</i>	4
<i>Details</i>	6
<i>Harmonies</i>	11
<i>Previews</i>	23
<i>Color Blindness Simulation</i>	26
<i>CSS Examples</i>	29

Color

Hex(CA8181)

Conversions

Conversions Part 1

Format	Color
Hex	CA8181
RGB	202, 129, 129
RGB Percent	79%, 51%, 51%
CMY	0.2078, 0.4941, 0.4941
CMYK	0.00, 0.36, 0.36, 0.21
HSL	0°, 41%, 65%
HSV	0°, 36%, 79%
XYZ	36.1698, 29.8420, 24.6226
YIQ	150.8270, 43.5080, 15.4760

Conversions

Conversions Part 2

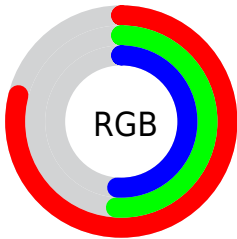
Format	Color
R_{YB}	202, 129, 129
Decimal	13271425
CIE _{Lab}	61.52, 28.20, 11.80
CIE _{LCh}	62, 30.573, 22.708
Yxy	29.8420, 0.3991, 0.3293
Android (android.graphics.Color)	4291461505 (0xFFCA8181)
YUV	150.8270, -10.7607, 44.8787
Hunter-Lab	54.6279, 22.5884, 11.5155

Details

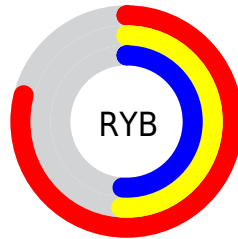
The Hex color **CA8181** is a light color, and the websafe version is hex **CC9999**. A complement of this color would be **81CACA**, and the grayscale version is **979797**.

A 20% lighter version of the original color is **FFB7B6**, and **924F50** is the 20% darker color. If you saturate the color by 10%, you get **CA6D6D**, and if you desaturate by 10%, it is **CA9595**.

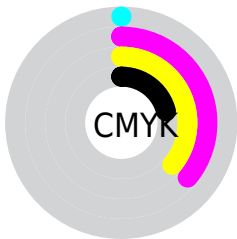
Distribution



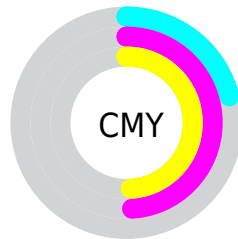
- Red (79%)
- Green (51%)
- Blue (51%)



- Red (79%)
- Yellow (51%)
- Blue (51%)



- Cyan (0%)
- Magenta (36%)
- Yellow (36%)
- Black (21%)



- Cyan (21%)
- Magenta (49%)
- Yellow (49%)

Brightness & Saturation Gradients

These gradients show how the Hex color CA8181 changes by changing the brightness by 10 percent. The first figure shows a shift by +10% for each color and the second figure -10%.

Similar to the brightness gradients but the following saturation gradients show a change of the Hex color CA8181 by changing the saturation by 10% instead.

 CA8181

 CA8181

FFFFFF

 AE6768

 FFB7B6

 924F50

 FFD2D1

 763739

 FFEFEE

 5C1F24

 42060E

 2C0000

 000000

 CA8181

 CA8181

 CA6D6D

 CA9595

■ CA5959

■ CAA9A9

■ CA4444

■ CABEBE

■ CA3030

■ CAD2D2

■ CA1C1C

■ CAE6E6

■ CA0808

■ CAFAFA

■ CA0000

■ CAFFFF

Harmonies

Analogous

The Analogous color harmony consists of three colors that are next to each other on the color wheel.



C5819C



CA8181



C1876B

Triad

The Triadic color harmony groups three colors that are evenly spaced from another and form a triangle on the color wheel.



CA8181



73A073



6599CA

Complementary

The Complementary color scheme is a pair of colors which are on the opposite of each other on the color wheel.



CA8181



81CACA

Split Complementary

Split-complementary colors differ from the complementary color scheme. The scheme consists of three colors, the original color and two neighbors of the complement color.



3EA0BF



CA8181



52A38D

Square

The Square scheme is like the rectangle color scheme, but the four colors are evenly spaced on the color wheel.



CA8181



929962



37A3A8



8F90C6

Rectangle

The Rectangle color scheme consists of four colors that form a rectangle on the color wheel.



CA8181



B58D61



37A3A8



579CC8

Sweetspot

The Sweet Spot groups the original color and five complimentary colors.



CA8181



FFE3E3



CA81CA



806F6F



000000



808080

Same Dimension

The Same Dimension uses a secret algorithm to generate beautiful new colors.



CA8181



FF9191



CAA681



665C5C



A60000



260000

Inverse Universe

The Inverse Universe completely reimagines the original color for something new.



81CACA



91FFFF



81A6CA



5C6666



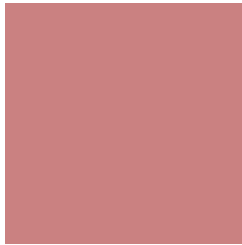
00A6A6



002626

Previews

White Background



This preview shows how the Hex color CA8181 looks on a white background.

Color Contrast Check

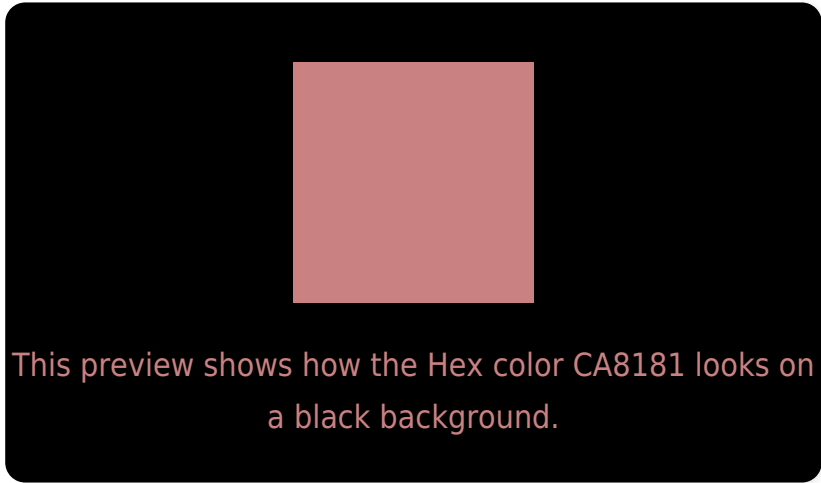
Large Text (above 18pt) WCAG AA ✓ Pass

Any Text WCAG AA × Fail

Large Text (above 18pt) WCAG AAA × Fail

Any Text WCAG AAA × Fail

Black Background



Color Contrast Check

Large Text (above 18pt) WCAG AA ✓ Pass

Any Text WCAG AA ✓ Pass

Large Text (above 18pt) WCAG AAA ✓ Pass

Any Text WCAG AAA × Fail

If you want to check with other color combinations, try the [Color Contrast Checker](#).

Hex CA8181 Background



This preview shows how black text looks on a background with the Hex color CA8181.



This preview shows how white text looks on a background with the Hex color CA8181.

Color Blindness Simulation

Color vision deficiency is a very complex topic, and I could not describe the different causes any better than Wikipedia does, so if you want to learn more, you should check out their [article about color blindness](#).

Dichromacy



Original Color
CA8181

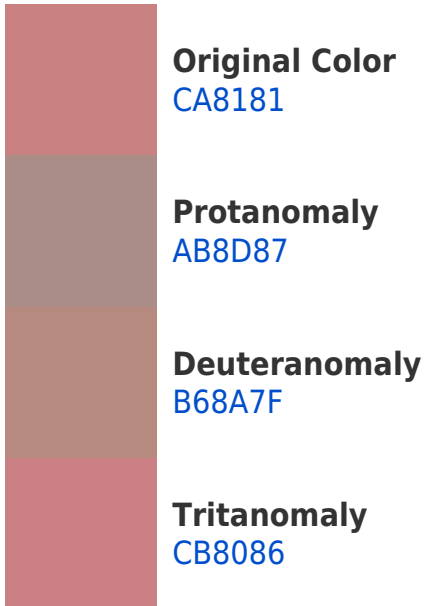
Protanopia
9A948B

Deuteranopia
AB8F7E

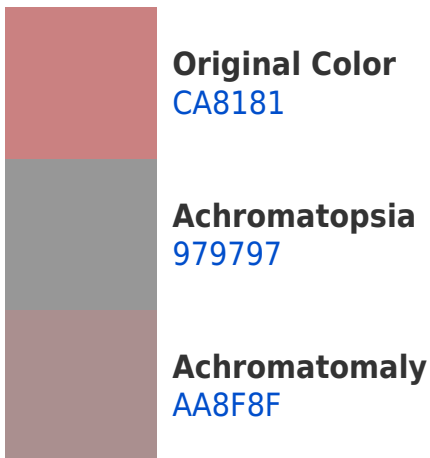


Tritanopia
CB8089

Trichromacy



Monochromacy



CSS Examples

Text

The CSS property to change the color of the text to Hex CA8181 is called "color". The color property can be set on classes, ids or directly on the HTML element.

This example shows how text in the color #CA8181 looks like.

```
.text, #text, p{  
    color:#CA8181  
}
```

If you want to add a text shadow in that color use the text-shadow property, you can generate a text shadow directly with our [CSS Text Shadow Generator](#).

Here you see how black text with a 4 pixel #CA8181 colored shadow looks like.

```
.shadow{ text-shadow: 4px 4px 2px #CA8181
}
```

Border

The CSS property to change the border of an element to Hex CA8181 is called "border". The border property can be set on classes, ids or directly on the HTML element.

This example shows the color as border, it can be applied via the CSS property "border" or "border-color".

```
.border, #border, table{ border:4px solid
#CA8181 }
```

If only the border color should be changed use the property `border-color`.

```
.border{ border-color:#CA8181 }
```

If you want to add a box shadow in that color use:

Here you see how a box with a 4 pixel #CA8181 colored shadow looks like.

```
.boxshadow{ -moz-box-shadow:4px 4px 4px  
4px #CA8181; -webkit-box-shadow:4px 4px  
4px 4px #CA8181; box-shadow:4px 4px 4px  
4px #CA8181 }
```

Background

The CSS property to change the background color of an element to Hex CA8181 is called "background". The background property can be set on classes, ids or directly on the HTML element.

```
.background, #background, body{  
background:#CA8181 }
```

If only the background color should be changed can be used:

```
.background{ background-color:#CA8181 }
```

This example shows the color as background, it is applied via the CSS property "background".

To optimize and compress your CSS code, you can use our [online CSS compressor and optimizer](#) based on csstidy. If you want to create a linear or radial gradient as background or border, check our [CSS Gradient Generator](#).

Hey! You found this booklet interesting? Support Converting Colors with the new Membership Option!

The pro membership hides all ads, plus gives you double the colors in the color bucket, and more awesome pro features!

[Learn more, Memberships starting at \\$2.50/m!](#)

**Follow me
on Twitter!**

@ConvertingColor