

# Converting Colors

Hex(CA9592)

Have a look what the booklet for  
Hex(CA9592) contains.

<b>Hex(CA9592)</b> .....	3
<b><i>Conversions</i></b> .....	4
<b><i>Details</i></b> .....	6
<b><i>Harmonies</i></b> .....	11
<b><i>Previews</i></b> .....	23
<b><i>Color Blindness Simulation</i></b> .....	26
<b><i>CSS Examples</i></b> .....	29

# **Color**

**Hex(CA9592)**

# Conversions

## Conversions Part 1

Format	Color
Hex	CA9592
RGB	202, 149, 146
RGB Percent	79%, 58%, 57%
CMY	0.2078, 0.4157, 0.4275
CMYK	0.00, 0.26, 0.28, 0.21
HSL	3°, 35%, 68%
HSV	3°, 28%, 79%
XYZ	40.2929, 36.1268, 32.0436
YIQ	164.5050, 32.5510, 10.3030

# Conversions

## Conversions Part 2

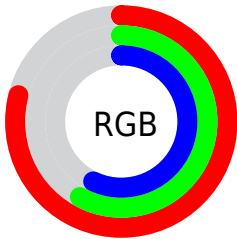
Format	Color
R <sub>Y</sub> B	202, 149, 146
Decimal	13276562
CIE Lab	66.62, 19.50, 9.41
CIE LCh	67, 21.652, 25.760
Yxy	36.1268, 0.3715, 0.3331
Android (android.graphics.Color)	4291466642 (0xFFCA9592)
YUV	164.5050, -9.1230, 32.8831
Hunter-Lab	60.1056, 14.4761, 10.4650

# Details

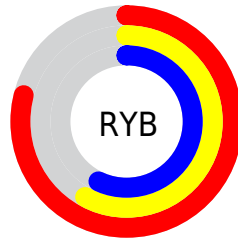
The Hex color **CA9592** is a light color, and the websafe version is hex **CC9999**. A complement of this color would be **92C7CA**, and the grayscale version is **A5A5A5**.

A 20% lighter version of the original color is **FFCBC8**, and **936260** is the 20% darker color. If you saturate the color by 10%, you get **CA827E**, and if you desaturate by 10%, it is **CAA8A6**.

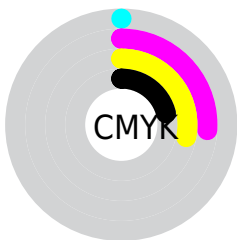
# Distribution



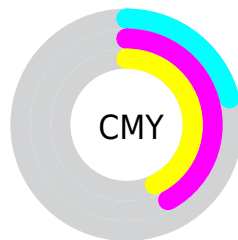
- Red (79%)
- Green (58%)
- Blue (57%)



- Red (79%)
- Yellow (58%)
- Blue (57%)



- Cyan (0%)
- Magenta (26%)
- Yellow (28%)
- Black (21%)



- Cyan (21%)
- Magenta (42%)
- Yellow (43%)

# Brightness & Saturation Gradients

These gradients show how the Hex color CA9592 changes by changing the brightness by 10 percent. The first figure shows a shift by +10% for each color and the second figure -10%.

Similar to the brightness gradients but the following saturation gradients show a change of the Hex color CA9592 by changing the saturation by 10% instead.





CA9592



CA9592

FFFFFF



AE7B78



FFCBC8



936260



FFE8E4



784A48



5E3331



451D1D



2E0702



0D0000



000000



CA9592



CA9592

■ CA827E

■ CAA8A6

■ CA6F6A

■ CABBBA

■ CA5C55

■ CACECF

■ CA4941

■ CAE1E3

■ CA352D

■ CAF5F7

■ CA2219

■ CAFFFF

■ CA0F05

■ CA0B00

# Harmonies

## Analogous

The Analogous color harmony consists of three colors that are next to each other on the color wheel.



C794A6



CA9592



C39983

# Triad

The Triadic color harmony groups three colors that are evenly spaced from another and form a triangle on the color wheel.



CA9592



88AB8C



87A5C8

# Complementary

The Complementary color scheme is a pair of colors which are on the opposite of each other on the color wheel.



CA9592



92C7CA

# Split Complementary

Split-complementary colors differ from the complementary color scheme. The scheme consists of three colors, the original color and two neighbors of the complement color.



72AAC2



CA9592



75AD9E

# Square

The Square scheme is like the rectangle color scheme, but the four colors are evenly spaced on the color wheel.



CA9592



9FA67F



6BADB2



A29EC5

# Rectangle

The Rectangle color scheme consists of four colors that form a rectangle on the color wheel.



CA9592



B99E7D



6BADB2



7FA7C7



# Sweetspot

The Sweet Spot groups the original color and five complimentary colors.



CA9592



FFECEB



CA92C7



807373



000000



808080



# Same Dimension

The Same Dimension uses a secret algorithm to generate beautiful new colors.



CA9592



FFAFAB



CAB192



665C5C



A60900



260200



# Inverse Universe

The Inverse Universe completely reimagines the original color for something new.



92C7CA



ABFAFF



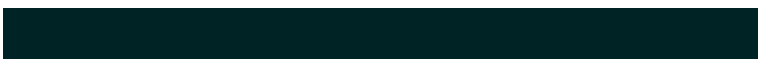
92ABCA



5C6566



009DA6

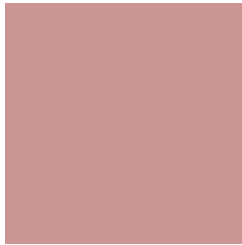


002426



# Previews

## White Background



This preview shows how the Hex color CA9592 looks on a white background.

## Color Contrast Check

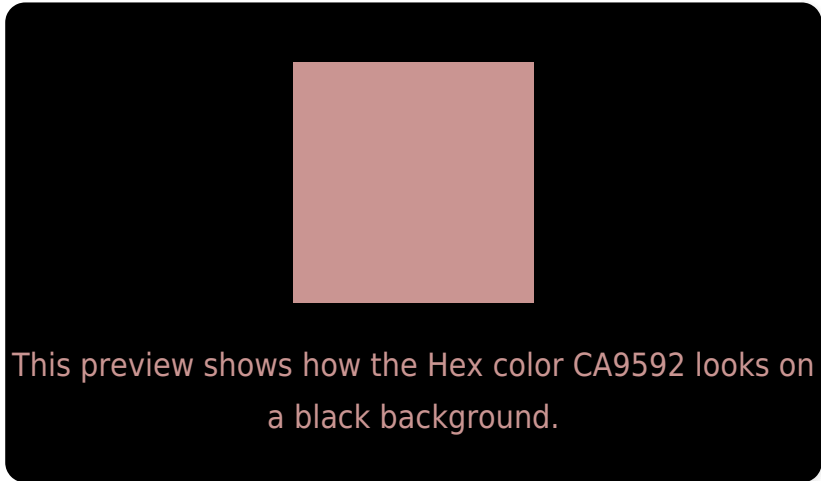
Large Text (above 18pt) WCAG AA × Fail

Any Text WCAG AA × Fail

Large Text (above 18pt) WCAG AAA × Fail

Any Text WCAG AAA × Fail

# Black Background



## Color Contrast Check

Large Text (above 18pt) WCAG AA ✓ Pass

Any Text WCAG AA ✓ Pass

Large Text (above 18pt) WCAG AAA ✓ Pass

Any Text WCAG AAA ✓ Pass

If you want to check with other color combinations, try the [Color Contrast Checker](#).



## Hex CA9592 Background



This preview shows how black text looks on a background with the Hex color CA9592.

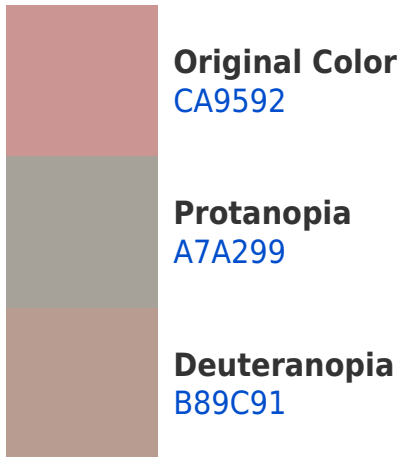


This preview shows how white text looks on a background with the Hex color CA9592.

# Color Blindness Simulation

Color vision deficiency is a very complex topic, and I could not describe the different causes any better than Wikipedia does, so if you want to learn more, you should check out their [article about color blindness](#).

## Dichromacy





**Tritanopia**  
CB939E

# Trichromacy



**Original Color**  
CA9592

**Protanomaly**  
B49D96

**Deuteranomaly**  
BF9991

**Tritanomaly**  
CB949A

# Monochromacy



**Original Color**  
CA9592

**Achromatopsia**  
A5A5A5

**Achromatomaly**  
B29F9E

# CSS Examples

## Text

The CSS property to change the color of the text to Hex CA9592 is called "color". The color property can be set on classes, ids or directly on the HTML element.

This example shows how text in the color #CA9592 looks like.

```
.text, #text, p{  
    color:#CA9592  
}
```

If you want to add a text shadow in that color use the text-shadow property, you can generate a text shadow directly with our [CSS Text Shadow Generator](#).

Here you see how black text with a 4 pixel #CA9592 colored shadow looks like.

```
.shadow{ text-shadow: 4px 4px 2px #CA9592
}
```

## Border

The CSS property to change the border of an element to Hex CA9592 is called "border". The border property can be set on classes, ids or directly on the HTML element.

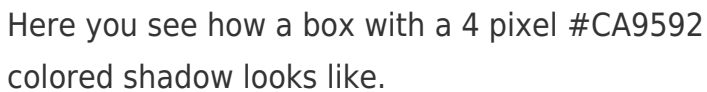
This example shows the color as border, it can be applied via the CSS property "border" or "border-color".

```
.border, #border, table{ border:4px solid
#CA9592 }
```

If only the border color should be changed use the property `border-color`.

```
.border{ border-color:#CA9592 }
```

If you want to add a box shadow in that color use:



Here you see how a box with a 4 pixel #CA9592 colored shadow looks like.

```
.boxshadow{ -moz-box-shadow:4px 4px 4px  
4px #CA9592; -webkit-box-shadow:4px 4px  
4px 4px #CA9592; box-shadow:4px 4px 4px  
4px #CA9592 }
```

# Background

The CSS property to change the background color of an element to Hex CA9592 is called "background". The background property can be set on classes, ids or directly on the HTML element.

```
.background, #background, body{  
background:#CA9592 }
```

If only the background color should be changed can be used:

```
.background{ background-color:#CA9592 }
```

This example shows the color as background, it is applied via the CSS property "background".

To optimize and compress your CSS code, you can use our [online CSS compressor and optimizer](#) based on csstidy. If you want to create a linear or radial gradient as background or border, check our [CSS Gradient Generator](#).



Hey! You found this booklet interesting? Support Converting Colors with the new Membership Option!

The pro membership hides all ads, plus gives you double the colors in the color bucket, and more awesome pro features!

**[Learn more, Memberships starting at \\$2.50/m!](#)**

**Follow me  
on Twitter!**

@ConvertingColor