

# Converting Colors

Hex(CA9867)

Have a look what the booklet for  
Hex(CA9867) contains.

<b>Hex(CA9867)</b> .....	3
<b><i>Conversions</i></b> .....	4
<b><i>Details</i></b> .....	6
<b><i>Harmonies</i></b> .....	11
<b><i>Previews</i></b> .....	23
<b><i>Color Blindness Simulation</i></b> .....	26
<b><i>CSS Examples</i></b> .....	29

**Color**

**Hex(CA9867)**

# Conversions

## Conversions Part 1

<b>Format</b>	<b>Color</b>
Hex	CA9867
RGB	202, 152, 103
RGB Percent	79%, 60%, 40%
CMY	0.2078, 0.4039, 0.5961
CMYK	0.00, 0.25, 0.49, 0.21
HSL	30°, 48%, 60%
HSV	30°, 49%, 79%
XYZ	38.0335, 35.9923, 17.7746
YIQ	161.3640, 45.5290, -4.6390

# Conversions

## Conversions Part 2

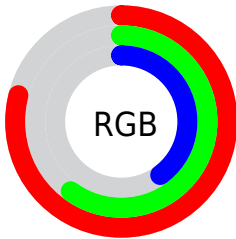
Format	Color
R <sub>Y</sub> B	202, 200, 103
Decimal	13277287
CIE Lab	66.51, 12.79, 32.96
CIE LCh	67, 35.353, 68.796
Yxy	35.9923, 0.4143, 0.3921
Android (android.graphics.Color)	4291467367 (0xFFCA9867)
YUV	161.3640, -28.7735, 35.6378
Hunter-Lab	59.9936, 8.1731, 24.4294

# Details

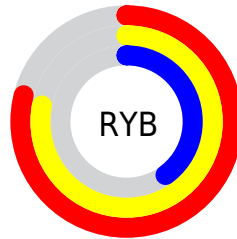
The Hex color **CA9867** is a light color, and the websafe version is hex **CC9966**. A complement of this color would be **6799CA**, and the grayscale version is **A2A2A2**.

A 20% lighter version of the original color is **FFCE9B**, and **916537** is the 20% darker color. If you saturate the color by 10%, you get **CA8E53**, and if you desaturate by 10%, it is **CAA27B**.

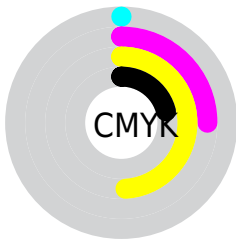
# Distribution



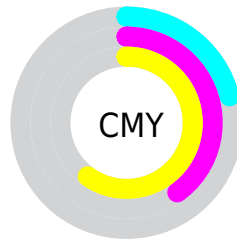
- Red (79%)
- Green (60%)
- Blue (40%)



- Red (79%)
- Yellow (78%)
- Blue (40%)



- Cyan (0%)
- Magenta (25%)
- Yellow (49%)
- Black (21%)



- Cyan (21%)
- Magenta (40%)
- Yellow (60%)

# Brightness & Saturation Gradients

These gradients show how the Hex color CA9867 changes by changing the brightness by 10 percent. The first figure shows a shift by +10% for each color and the second figure -10%.

Similar to the brightness gradients but the following saturation gradients show a change of the Hex color CA9867 by changing the saturation by 10% instead.



 CA9867

 CA9867

FFFFFF

 AD7E4E

 FFCE9B

 916537

 FFEAB6

 764D20

 FFFFD2

 5B3608

 FFFFEE

 422100

 280C00

 000000

 CA9867

 CA9867

 CA8E53

 CAA27B

■ CA843F

■ CAAC8F

■ CA792A

■ CAB7A4

■ CA6F16

■ CAC1B8

■ CA6502

■ CACBCC

■ CA6400

■ CAD5E0

■ CADFF4

■ CAEAFF

■ CAF4FF

# Harmonies

## Analogous

The Analogous color harmony consists of three colors that are next to each other on the color wheel.



DC8E7B



CA9867



AEA362

# Triad

The Triadic color harmony groups three colors that are evenly spaced from another and form a triangle on the color wheel.



CA9867



39B3AA



B296D3

# Complementary

The Complementary color scheme is a pair of colors which are on the opposite of each other on the color wheel.



CA9867



6799CA

# Split Complementary

Split-complementary colors differ from the complementary color scheme. The scheme consists of three colors, the original color and two neighbors of the complement color.



84A2E0



CA9867



21B1C9

# Square

The Square scheme is like the rectangle color scheme, but the four colors are evenly spaced on the color wheel.



CA9867



64B18A



4DABDC



D18CB9

# Rectangle

The Rectangle color scheme consists of four colors that form a rectangle on the color wheel.



CA9867



97A969



4DABDC



A49AD9

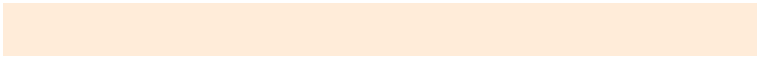


# Sweetspot

The Sweet Spot groups the original color and five complimentary colors.



CA9867



FFECD9



CA679A



807469



000000



808080



# Same Dimension

The Same Dimension uses a secret algorithm to generate beautiful new colors.



CA9867



FFB369



CAC867



66615C



A65200



261300

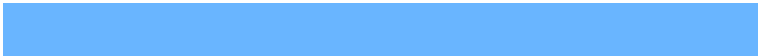


# Inverse Universe

The Inverse Universe completely reimagines the original color for something new.



6799CA



69B5FF



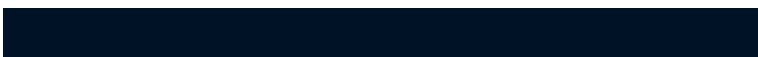
6769CA



5C6166



0054A6

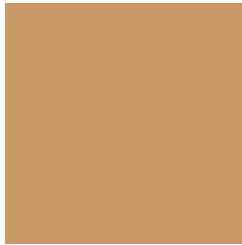


001326



# Previews

## White Background



This preview shows how the Hex color CA9867 looks on a white background.

## Color Contrast Check

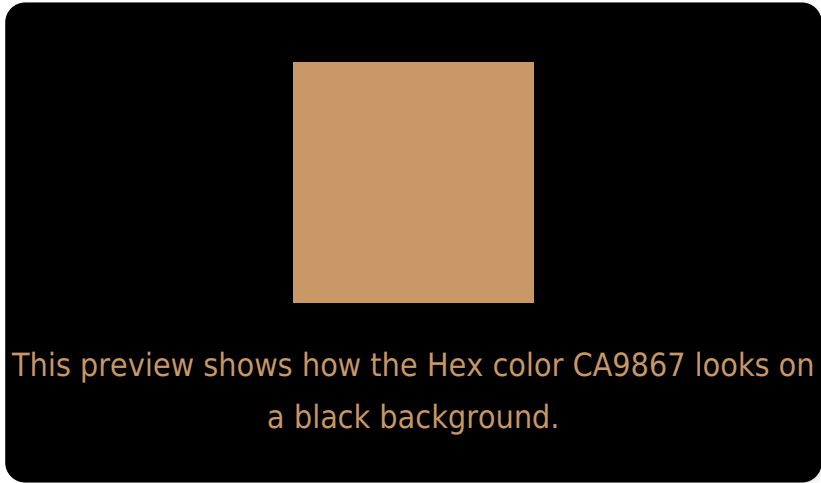
Large Text (above 18pt) WCAG AA × Fail

Any Text WCAG AA × Fail

Large Text (above 18pt) WCAG AAA × Fail

Any Text WCAG AAA × Fail

# Black Background



## Color Contrast Check

Large Text (above 18pt) WCAG AA ✓ Pass

Any Text WCAG AA ✓ Pass

Large Text (above 18pt) WCAG AAA ✓ Pass

Any Text WCAG AAA ✓ Pass

If you want to check with other color combinations, try the [Color Contrast Checker](#).



## Hex CA9867 Background



This preview shows how black text looks on a background with the Hex color CA9867.




This preview shows how white text looks on a background with the Hex color CA9867.

# Color Blindness Simulation

Color vision deficiency is a very complex topic, and I could not describe the different causes any better than Wikipedia does, so if you want to learn more, you should check out their [article about color blindness](#).

## Dichromacy





**Tritanopia**  
CF919C

# Trichromacy



# Monochromacy



# CSS Examples

## Text

The CSS property to change the color of the text to Hex CA9867 is called "color". The color property can be set on classes, ids or directly on the HTML element.

This example shows how text in the color #CA9867 looks like.

```
.text, #text, p{  
    color:#CA9867  
}
```

If you want to add a text shadow in that color use the text-shadow property, you can generate a text shadow directly with our [CSS Text Shadow Generator](#).

Here you see how black text with a 4 pixel #CA9867 colored shadow looks like.

```
.shadow{ text-shadow: 4px 4px 2px #CA9867
}
```

## Border

The CSS property to change the border of an element to Hex CA9867 is called "border". The border property can be set on classes, ids or directly on the HTML element.

This example shows the color as border, it can be applied via the CSS property "border" or "border-color".

```
.border, #border, table{ border:4px solid
#CA9867 }
```

If only the border color should be changed use the property `border-color`.

```
.border{ border-color:#CA9867 }
```

If you want to add a box shadow in that color use:

Here you see how a box with a 4 pixel #CA9867 colored shadow looks like.

```
.boxshadow{ -moz-box-shadow:4px 4px 4px  
4px #CA9867; -webkit-box-shadow:4px 4px  
4px 4px #CA9867; box-shadow:4px 4px 4px  
4px #CA9867 }
```

# Background

The CSS property to change the background color of an element to Hex CA9867 is called "background". The background property can be set on classes, ids or directly on the HTML element.

```
.background, #background, body{  
background:#CA9867 }
```

If only the background color should be changed can be used:

```
.background{ background-color:#CA9867 }
```

This example shows the color as background, it is applied via the CSS property "background".

To optimize and compress your CSS code, you can use our [online CSS compressor and optimizer](#) based on csstidy. If you want to create a linear or radial gradient as background or border, check our [CSS Gradient Generator](#).



Hey! You found this booklet interesting? Support Converting Colors with the new Membership Option!

The pro membership hides all ads, plus gives you double the colors in the color bucket, and more awesome pro features!

**[Learn more, Memberships starting at \\$2.50/m!](#)**

**Follow me  
on Twitter!**

@ConvertingColor