

# Converting Colors

Hex(CA9A98)

Have a look what the booklet for  
Hex(CA9A98) contains.

<b>Hex(CA9A98)</b> .....	3
<i><b>Conversions</b></i> .....	4
<i><b>Details</b></i> .....	6
<i><b>Harmonies</b></i> .....	11
<i><b>Previews</b></i> .....	23
<i><b>Color Blindness Simulation</b></i> .....	26
<i><b>CSS Examples</b></i> .....	29

**Color**

**Hex(CA9A98)**

# Conversions

## Conversions Part 1

Format	Color
Hex	CA9A98
RGB	202, 154, 152
RGB Percent	79%, 60%, 60%
CMY	0.2078, 0.3961, 0.4039
CMYK	0.00, 0.24, 0.25, 0.21
HSL	2°, 32%, 69%
HSV	2°, 25%, 79%
XYZ	41.5802, 37.9348, 34.8364
YIQ	168.1240, 29.2500, 9.5540

# Conversions

## Conversions Part 2

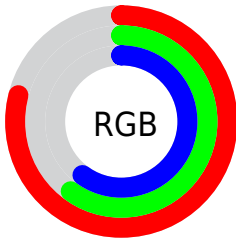
<b>Format</b>	<b>Color</b>
R <sub>YB</sub>	202, 154, 152
Decimal	13277848
CIE Lab	67.97, 17.61, 7.99
CIE LCh	68, 19.342, 24.400
Yxy	37.9348, 0.3636, 0.3317
Android (android.graphics.Color)	4291467928 (0xFFCA9A98)
YUV	168.1240, -7.9491, 29.7093
Hunter-Lab	61.5912, 12.7208, 9.5790

# Details

The Hex color **CA9A98** is a light color, and the websafe version is hex **CC9999**. A complement of this color would be **98C8CA**, and the grayscale version is **A8A8A8**.

A 20% lighter version of the original color is **FFD1CE**, and **936765** is the 20% darker color. If you saturate the color by 10%, you get **CA8784**, and if you desaturate by 10%, it is **CAADAC**.

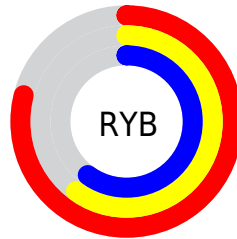
# Distribution



Red (79%)

Green (60%)

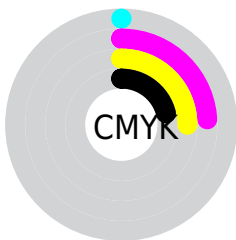
Blue (60%)



Red (79%)

Yellow (60%)

Blue (60%)

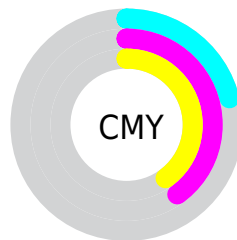


Cyan (0%)

Magenta (24%)

Yellow (25%)

Black (21%)



Cyan (21%)

Magenta (40%)

Yellow (40%)

# Brightness & Saturation Gradients

These gradients show how the Hex color CA9A98 changes by changing the brightness by 10 percent. The first figure shows a shift by +10% for each color and the second figure -10%.

Similar to the brightness gradients but the following saturation gradients show a change of the Hex color CA9A98 by changing the saturation by 10% instead.



CA9A98

CA9A98

FFFFFF

AE807E

FFD1CE

936765

FFEDEA

794E4D

5F3736

462121

2F0C0B

140000

000000

CA9A98

CA9A98

■ CA8784

■ CAADAC

■ CA7370

■ CAC1C0

■ CA605B

■ CAD4D5

■ CA4C47

■ CAE8E9

■ CA3933

■ CAFBFD

■ CA261F

■ CAFFFF

■ CA120B

■ CA0800

# Harmonies

## Analogous

The Analogous color harmony consists of three colors that are next to each other on the color wheel.



C69AAA



CA9A98



C49E8A

# Triad

The Triadic color harmony groups three colors that are evenly spaced from another and form a triangle on the color wheel.



CA9A98



90AD91



8DA8C8

# Complementary

The Complementary color scheme is a pair of colors which are on the opposite of each other on the color wheel.



CA9A98



98C8CA

# Split Complementary

Split-complementary colors differ from the complementary color scheme. The scheme consists of three colors, the original color and two neighbors of the complement color.



7BADC1



CA9A98



7FB0A2

# Square

The Square scheme is like the rectangle color scheme, but the four colors are evenly spaced on the color wheel.



CA9A98



A4A986



76AFB3



A5A2C5

# Rectangle

The Rectangle color scheme consists of four colors that form a rectangle on the color wheel.



CA9A98



BCA184



76AFB3



86AAC7

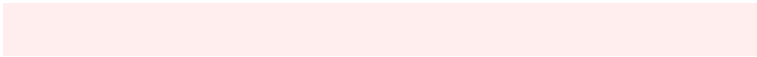


# Sweetspot

The Sweet Spot groups the original color and five complimentary colors.



CA9A98



FFEEED



CA98C8



807675



000000



808080



# Same Dimension

The Same Dimension uses a secret algorithm to generate beautiful new colors.



CA9A98



FFB6B3



CAB398



665C5C



A60700



260200



# Inverse Universe

The Inverse Universe completely reimagines the original color for something new.



98C8CA



B3FCFF



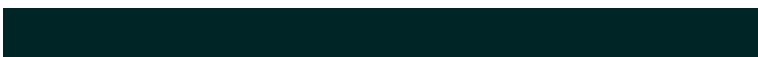
98AFCA



5C6666



009FA6

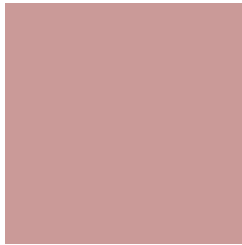


002526



# Previews

## White Background



This preview shows how the Hex color CA9A98 looks on a white background.

## Color Contrast Check

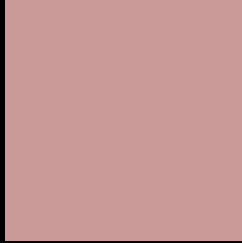
Large Text (above 18pt) WCAG AA × Fail

Any Text WCAG AA × Fail

Large Text (above 18pt) WCAG AAA × Fail

Any Text WCAG AAA × Fail

# Black Background



This preview shows how the Hex color CA9A98 looks on a black background.

## Color Contrast Check

Large Text (above 18pt) WCAG AA ✓ Pass

Any Text WCAG AA ✓ Pass

Large Text (above 18pt) WCAG AAA ✓ Pass

Any Text WCAG AAA ✓ Pass

If you want to check with other color combinations, try the [Color Contrast Checker](#).



## Hex CA9A98 Background



This preview shows how black text looks on a background with the Hex color CA9A98.



This preview shows how white text looks on a background with the Hex color CA9A98.

# Color Blindness Simulation

Color vision deficiency is a very complex topic, and I could not describe the different causes any better than Wikipedia does, so if you want to learn more, you should check out their [article about color blindness](#).

## Dichromacy



**Original Color**  
CA9A98

**Protanopia**  
ABA59E

**Deuteranopia**  
BBA097



**Tritanopia**  
CB98A4

# Trichromacy



**Original Color**  
CA9A98

**Protanomaly**  
B6A19C

**Deuteranomaly**  
C09E97

**Tritanomaly**  
CB99A0

# Monochromacy



**Original Color**  
CA9A98

**Achromatopsia**  
A8A8A8

**Achromatomaly**  
B4A3A2

# CSS Examples

## Text

The CSS property to change the color of the text to Hex CA9A98 is called "color". The color property can be set on classes, ids or directly on the HTML element.

This example shows how text in the color #CA9A98 looks like.

```
.text, #text, p{  
    color:#CA9A98  
}
```

If you want to add a text shadow in that color use the text-shadow property, you can generate a text shadow directly with our [CSS Text Shadow Generator](#).

Here you see how black text with a 4 pixel #CA9A98 colored shadow looks like.

```
.shadow{ text-shadow: 4px 4px 2px #CA9A98  
}
```

## Border

The CSS property to change the border of an element to Hex CA9A98 is called "border". The border property can be set on classes, ids or directly on the HTML element.

This example shows the color as border, it can be applied via the CSS property "border" or "border-color".

```
.border, #border, table{ border:4px solid  
#CA9A98 }
```

If only the border color should be changed use the property `border-color`.

```
.border{ border-color:#CA9A98 }
```

If you want to add a box shadow in that color use:

Here you see how a box with a 4 pixel #CA9A98 colored shadow looks like.

```
.boxshadow{ -moz-box-shadow:4px 4px 4px  
4px #CA9A98; -webkit-box-shadow:4px 4px  
4px 4px #CA9A98; box-shadow:4px 4px 4px  
4px #CA9A98 }
```

# Background

The CSS property to change the background color of an element to Hex CA9A98 is called "background". The background property can be set on classes, ids or directly on the HTML element.

```
.background, #background, body{  
background:#CA9A98 }
```

If only the background color should be changed can be used:

```
.background{ background-color:#CA9A98 }
```

This example shows the color as background, it is applied via the CSS property "background".

To optimize and compress your CSS code, you can use our [online CSS compressor and optimizer](#) based on csstidy. If you want to create a linear or radial gradient as background or border, check our [CSS Gradient Generator](#).



Hey! You found this booklet interesting? Support Converting Colors with the new Membership Option!

The pro membership hides all ads, plus gives you double the colors in the color bucket, and more awesome pro features!

**[Learn more, Memberships starting at \\$2.50/m!](#)**

**Follow me  
on Twitter!**

@ConvertingColor