

# Converting Colors

Hex(CA9B94)

Have a look what the booklet for  
Hex(CA9B94) contains.

|  |    |
|--|----|
| <b>Hex(CA9B94)</b> .....                       | 3  |
| <i><b>Conversions</b></i> .....                | 4  |
| <i><b>Details</b></i> .....                    | 6  |
| <i><b>Harmonies</b></i> .....                  | 11 |
| <i><b>Previews</b></i> .....                   | 23 |
| <i><b>Color Blindness Simulation</b></i> ..... | 26 |
| <i><b>CSS Examples</b></i> .....               | 29 |

# **Color**

**Hex(CA9B94)**

# Conversions

## Conversions Part 1

| Format      | Color                     |
|-------------|---------------------------|
| Hex         | CA9B94                    |
| RGB         | 202, 155, 148             |
| RGB Percent | 79%, 61%, 58%             |
| CMY         | 0.2078, 0.3922, 0.4196    |
| CMYK        | 0.00, 0.23, 0.27, 0.21    |
| HSL         | 8°, 34%, 69%              |
| HSV         | 8°, 27%, 79%              |
| XYZ         | 41.4238, 38.1374, 33.1950 |
| YIQ         | 168.2550, 30.2590, 7.7870 |

# Conversions

## Conversions Part 2

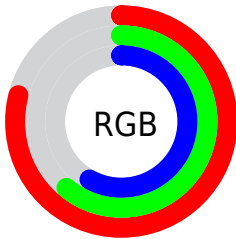
| Format                              | Color                         |
|-------------------------------------|-------------------------------|
| R <sub>Y</sub> B                    | 202, 156, 148                 |
| Decimal                             | 13278100                      |
| CIE Lab                             | 68.12, 16.49, 10.43           |
| CIE LCh                             | 68, 19.516, 32.308            |
| Yxy                                 | 38.1374, 0.3674,<br>0.3382    |
| Android<br>(android.graphics.Color) | 4291468180<br>(0xFFCA9B94)    |
| YUV                                 | 168.2550, -9.9857,<br>29.5944 |
| Hunter-Lab                          | 61.7555, 11.6606,<br>11.3591  |

# Details

The Hex color **CA9B94** is a light color, and the websafe version is hex **CC9999**. A complement of this color would be **94C3CA**, and the grayscale version is **A8A8A8**.

A 20% lighter version of the original color is **FFD2CA**, and **936861** is the 20% darker color. If you saturate the color by 10%, you get **CA8980**, and if you desaturate by 10%, it is **CAADA8**.

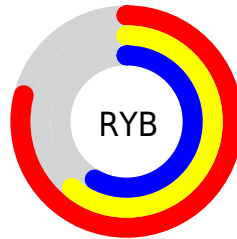
# Distribution



Red (79%)

Green (61%)

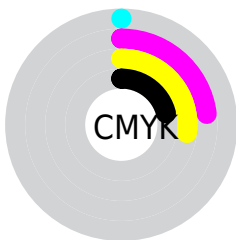
Blue (58%)



Red (79%)

Yellow (61%)

Blue (58%)

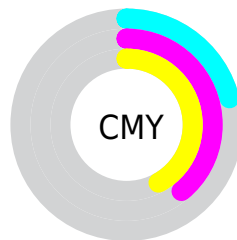


Cyan (0%)

Magenta (23%)

Yellow (27%)

Black (21%)



Cyan (21%)

Magenta (39%)

Yellow (42%)

# Brightness & Saturation Gradients

These gradients show how the Hex color CA9B94 changes by changing the brightness by 10 percent. The first figure shows a shift by +10% for each color and the second figure -10%.

Similar to the brightness gradients but the following saturation gradients show a change of the Hex color CA9B94 by changing the saturation by 10% instead.



CA9B94

CA9B94

FFFFFF

AE817A

FFD2CA

936861

FFEEE6

784F4A

5F3833

46221E

2F0D05

130000

000000

CA9B94

CA9B94

■ CA8980

■ CAADA8

■ CA786C

■ CABEBC

■ CA6657

■ CAD0D1

■ CA5543

■ CAE1E5

■ CA432F

■ CAF3F9

■ CA321B

■ CAFFFF

■ CA2007

■ CA1A00

# Harmonies

## Analogous

The Analogous color harmony consists of three colors that are next to each other on the color wheel.



C99AA5



CA9B94



C29F87

# Triad

The Triadic color harmony groups three colors that are evenly spaced from another and form a triangle on the color wheel.



CA9B94



8BAF95



93A7C9

# Complementary

The Complementary color scheme is a pair of colors which are on the opposite of each other on the color wheel.



CA9B94



94C3CA

# Split Complementary

Split-complementary colors differ from the complementary color scheme. The scheme consists of three colors, the original color and two neighbors of the complement color.



7FACC5



CA9B94



7BB0A7

# Square

The Square scheme is like the rectangle color scheme, but the four colors are evenly spaced on the color wheel.



CA9B94



9FAB88



76AFB8



ABA1C4

# Rectangle

The Rectangle color scheme consists of four colors that form a rectangle on the color wheel.



CA9B94



B8A383



76AFB8



8CA9C9

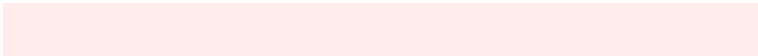


# Sweetspot

The Sweet Spot groups the original color and five complimentary colors.



CA9B94



FFEDEB



CA94C4



807473



000000



808080



# Same Dimension

The Same Dimension uses a secret algorithm to generate beautiful new colors.



CA9B94



FFB8AD



CAB594



665D5C



A61500



260500

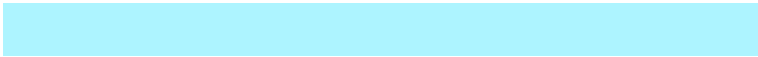


# Inverse Universe

The Inverse Universe completely reimagines the original color for something new.



94C3CA



ADF4FF



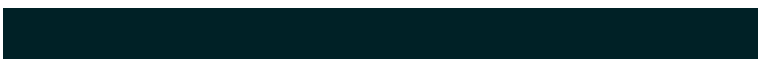
94A9CA



5C6566



0090A6

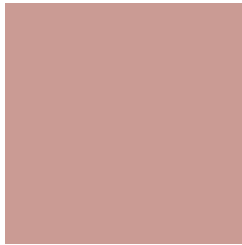


002126



# Previews

## White Background



This preview shows how the Hex color CA9B94 looks on a white background.

## Color Contrast Check

Large Text (above 18pt) WCAG AA × Fail

Any Text WCAG AA × Fail

Large Text (above 18pt) WCAG AAA × Fail

Any Text WCAG AAA × Fail

# Black Background



This preview shows how the Hex color CA9B94 looks on a black background.

## Color Contrast Check

Large Text (above 18pt) WCAG AA ✓ Pass

Any Text WCAG AA ✓ Pass

Large Text (above 18pt) WCAG AAA ✓ Pass

Any Text WCAG AAA ✓ Pass

If you want to check with other color combinations, try the [Color Contrast Checker](#).



## Hex CA9B94 Background



This preview shows how black text looks on a background with the Hex color CA9B94.



This preview shows how white text looks on a background with the Hex color CA9B94.

# Color Blindness Simulation

Color vision deficiency is a very complex topic, and I could not describe the different causes any better than Wikipedia does, so if you want to learn more, you should check out their [article about color blindness](#).


## Dichromacy



**Original Color**  
CA9B94

**Protanopia**  
ACA69A

**Deuteranopia**  
BDA093



**Tritanopia**  
CC99A4

# Trichromacy



**Original Color**  
CA9B94

**Protanomaly**  
B7A298

**Deuteranomaly**  
C29E93

**Tritanomaly**  
CB9A9E

# Monochromacy



**Original Color**  
CA9B94

**Achromatopsia**  
A8A8A8

**Achromatomaly**  
B4A3A1

# CSS Examples

## Text

The CSS property to change the color of the text to Hex CA9B94 is called "color". The color property can be set on classes, ids or directly on the HTML element.

This example shows how text in the color #CA9B94 looks like.

```
.text, #text, p{  
    color:#CA9B94  
}
```

If you want to add a text shadow in that color use the text-shadow property, you can generate a text shadow directly with our [CSS Text Shadow Generator](#).

Here you see how black text with a 4 pixel #CA9B94 colored shadow looks like.

```
.shadow{ text-shadow: 4px 4px 2px #CA9B94
}
```

## Border

The CSS property to change the border of an element to Hex CA9B94 is called "border". The border property can be set on classes, ids or directly on the HTML element.

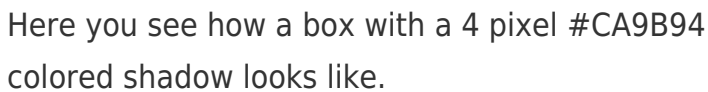
This example shows the color as border, it can be applied via the CSS property "border" or "border-color".

```
.border, #border, table{ border:4px solid
#CA9B94 }
```

If only the border color should be changed use the property `border-color`.

```
.border{ border-color:#CA9B94 }
```

If you want to add a box shadow in that color use:



Here you see how a box with a 4 pixel #CA9B94 colored shadow looks like.

```
.boxshadow{ -moz-box-shadow:4px 4px 4px  
4px #CA9B94; -webkit-box-shadow:4px 4px  
4px 4px #CA9B94; box-shadow:4px 4px 4px  
4px #CA9B94 }
```

# Background

The CSS property to change the background color of an element to Hex CA9B94 is called "background". The background property can be set on classes, ids or directly on the HTML element.

```
.background, #background, body{  
background:#CA9B94 }
```

If only the background color should be changed can be used:

```
.background{ background-color:#CA9B94 }
```

This example shows the color as background, it is applied via the CSS property "background".

To optimize and compress your CSS code, you can use our [online CSS compressor and optimizer](#) based on csstidy. If you want to create a linear or radial gradient as background or border, check our [CSS Gradient Generator](#).



Hey! You found this booklet interesting? Support Converting Colors with the new Membership Option!

The pro membership hides all ads, plus gives you double the colors in the color bucket, and more awesome pro features!

**[Learn more, Memberships starting at \\$2.50/m!](#)**

**Follow me  
on Twitter!**

@ConvertingColor