

Converting Colors

Hex(CA9C74)

Have a look what the booklet for
Hex(CA9C74) contains.

Hex(CA9C74)	3
<i>Conversions</i>	4
<i>Details</i>	6
<i>Harmonies</i>	11
<i>Previews</i>	23
<i>Color Blindness Simulation</i>	26
<i>CSS Examples</i>	29

Color

Hex(CA9C74)

Conversions

Conversions Part 1

Format	Color
Hex	CA9C74
RGB	202, 156, 116
RGB Percent	79%, 61%, 45%
CMY	0.2078, 0.3882, 0.5451
CMYK	0.00, 0.23, 0.43, 0.21
HSL	28°, 45%, 62%
HSV	28°, 43%, 79%
XYZ	39.3980, 37.5944, 21.7030
YIQ	165.1940, 40.2560, -2.6880

Conversions

Conversions Part 2

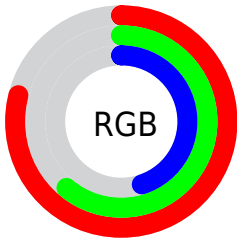
Format	Color
R_{YB}	202, 191, 116
Decimal	13278324
CIE Lab	67.72, 11.94, 27.52
CIE LCh	68, 29.996, 66.543
Yxy	37.5944, 0.3992, 0.3809
Android (android.graphics.Color)	4291468404 (0xFFCA9C74)
YUV	165.1940, -24.2526, 32.2789
Hunter-Lab	61.3143, 7.3965, 21.9336

Details

The Hex color **CA9C74** is a light color, and the websafe version is hex **CC9966**. A complement of this color would be **74A2CA**, and the grayscale version is **A5A5A5**.

A 20% lighter version of the original color is **FFD3A8**, and **926943** is the 20% darker color. If you saturate the color by 10%, you get **CA9160**, and if you desaturate by 10%, it is **CAA788**.

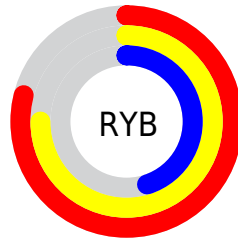
Distribution



Red (79%)

Green (61%)

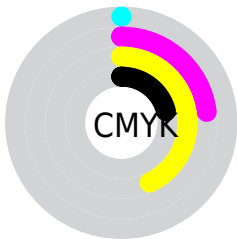
Blue (45%)



Red (79%)

Yellow (75%)

Blue (45%)

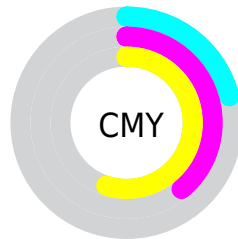


Cyan (0%)

Magenta (23%)

Yellow (43%)

Black (21%)



Cyan (21%)

Magenta (39%)

Yellow (55%)

Brightness & Saturation Gradients

These gradients show how the Hex color CA9C74 changes by changing the brightness by 10 percent. The first figure shows a shift by +10% for each color and the second figure -10%.

Similar to the brightness gradients but the following saturation gradients show a change of the Hex color CA9C74 by changing the saturation by 10% instead.

 CA9C74

 CA9C74

FFFFFF

 AE825B

 FFD3A8

 926943

 FFEFC4

 77512C

 FFFFEO

 5D3A16

 FFFFFC

 442400

 2A1000

 060000

 000000

 CA9C74

 CA9C74

CA9160

CAA788

CA864C

CAB29C

CA7C37

CABCB1

CA7123

CAC7C5

CA660F

CAD2D9

CA5E00

CADDED

CAE8FF

CAF2FF

CAFDFE

Harmonies

Analogous

The Analogous color harmony consists of three colors that are next to each other on the color wheel.



D99486



CA9C74



B2A56F

Triad

The Triadic color harmony groups three colors that are evenly spaced from another and form a triangle on the color wheel.



CA9C74



58B4AA



B09CD0

Complementary

The Complementary color scheme is a pair of colors which are on the opposite of each other on the color wheel.



CA9C74



74A2CA

Split Complementary

Split-complementary colors differ from the complementary color scheme. The scheme consists of three colors, the original color and two neighbors of the complement color.



8AA6DA



CA9C74



4DB2C4

Square

The Square scheme is like the rectangle color scheme, but the four colors are evenly spaced on the color wheel.



CA9C74



75B28F



63AED6



CC94BB

Rectangle

The Rectangle color scheme consists of four colors that form a rectangle on the color wheel.



CA9C74



9FAB74



63AED6



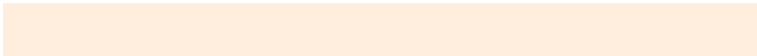
A49FD5

Sweetspot

The Sweet Spot groups the original color and five complimentary colors.



CA9C74



FFEDDE



CA74A3



80756B



000000



808080

Same Dimension

The Same Dimension uses a secret algorithm to generate beautiful new colors.



CA9C74



FFB97D



CAC674



66615C



A64D00



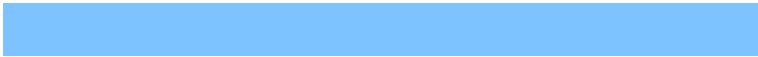
261200

Inverse Universe

The Inverse Universe completely reimagines the original color for something new.



74A2CA



7DC3FF



7478CA



5C6166



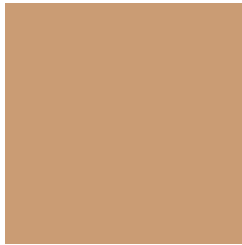
0059A6



001426

Previews

White Background



This preview shows how the Hex color CA9C74 looks on a white background.

Color Contrast Check

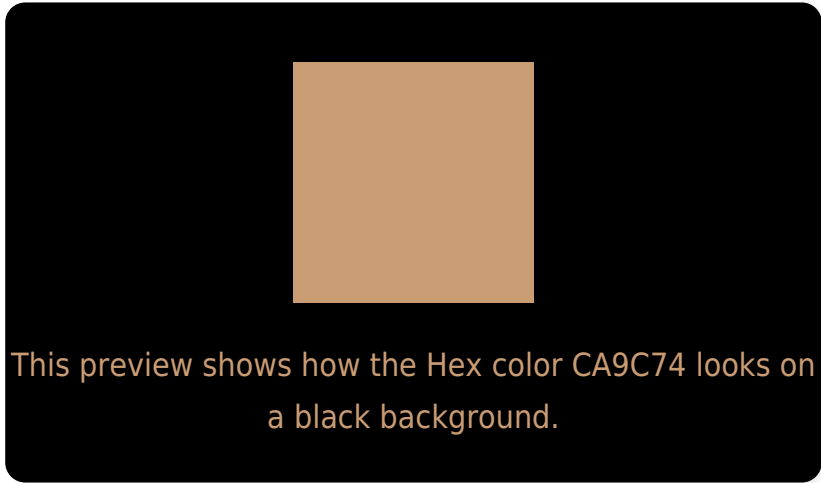
Large Text (above 18pt) WCAG AA × Fail

Any Text WCAG AA × Fail

Large Text (above 18pt) WCAG AAA × Fail

Any Text WCAG AAA × Fail

Black Background



Color Contrast Check

Large Text (above 18pt) WCAG AA ✓ Pass

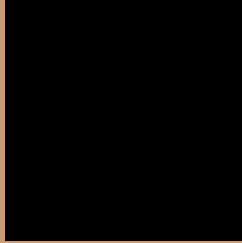
Any Text WCAG AA ✓ Pass

Large Text (above 18pt) WCAG AAA ✓ Pass

Any Text WCAG AAA ✓ Pass

If you want to check with other color combinations, try the [Color Contrast Checker](#).

Hex CA9C74 Background



This preview shows how black text looks on a background with the Hex color CA9C74.



This preview shows how white text looks on a background with the Hex color CA9C74.

Color Blindness Simulation

Color vision deficiency is a very complex topic, and I could not describe the different causes any better than Wikipedia does, so if you want to learn more, you should check out their [article about color blindness](#).

Dichromacy



Original Color
CA9C74

Protanopia
B2A578

Deuteranopia
C59E74



Tritanopia
CE96A1

Trichromacy



Original Color
CA9C74

Protanomaly
BBA277

Deuteranomaly
C79D74

Tritanomaly
CD9891

Monochromacy



Original Color
CA9C74

Achromatopsia
A5A5A5

Achromatomaly
B2A293

CSS Examples

Text

The CSS property to change the color of the text to Hex CA9C74 is called "color". The color property can be set on classes, ids or directly on the HTML element.

This example shows how text in the color #CA9C74 looks like.

```
.text, #text, p{  
    color:#CA9C74  
}
```

If you want to add a text shadow in that color use the text-shadow property, you can generate a text shadow directly with our [CSS Text Shadow Generator](#).

Here you see how black text with a 4 pixel #CA9C74 colored shadow looks like.

```
.shadow{ text-shadow: 4px 4px 2px #CA9C74  
}
```

Border

The CSS property to change the border of an element to Hex CA9C74 is called "border". The border property can be set on classes, ids or directly on the HTML element.

This example shows the color as border, it can be applied via the CSS property "border" or "border-color".

```
.border, #border, table{ border:4px solid  
#CA9C74 }
```

If only the border color should be changed use the property `border-color`.

```
.border{ border-color:#CA9C74 }
```

If you want to add a box shadow in that color use:

Here you see how a box with a 4 pixel #CA9C74 colored shadow looks like.

```
.boxshadow{ -moz-box-shadow:4px 4px 4px  
4px #CA9C74; -webkit-box-shadow:4px 4px  
4px 4px #CA9C74; box-shadow:4px 4px 4px  
4px #CA9C74 }
```

Background

The CSS property to change the background color of an element to Hex CA9C74 is called "background". The background property can be set on classes, ids or directly on the HTML element.

```
.background, #background, body{  
background:#CA9C74 }
```

If only the background color should be changed can be used:

```
.background{ background-color:#CA9C74 }
```

This example shows the color as background, it is applied via the CSS property "background".

To optimize and compress your CSS code, you can use our [online CSS compressor and optimizer](#) based on csstidy. If you want to create a linear or radial gradient as background or border, check our [CSS Gradient Generator](#).

Hey! You found this booklet interesting? Support Converting Colors with the new Membership Option!

The pro membership hides all ads, plus gives you double the colors in the color bucket, and more awesome pro features!

[Learn more, Memberships starting at \\$2.50/m!](#)

**Follow me
on Twitter!**

@ConvertingColor