

Converting Colors

Hex(CA9D91)

Have a look what the booklet for
Hex(CA9D91) contains.

Hex(CA9D91)	3
<i>Conversions</i>	4
<i>Details</i>	6
<i>Harmonies</i>	11
<i>Previews</i>	23
<i>Color Blindness Simulation</i>	26
<i>CSS Examples</i>	29

Color

Hex(CA9D91)

Conversions

Conversions Part 1

Format	Color
Hex	CA9D91
RGB	202, 157, 145
RGB Percent	79%, 62%, 57%
CMY	0.2078, 0.3843, 0.4314
CMYK	0.00, 0.22, 0.28, 0.21
HSL	13°, 35%, 68%
HSV	13°, 28%, 79%
XYZ	41.5249, 38.7148, 32.0722
YIQ	169.0870, 30.6720, 5.8080

Conversions

Conversions Part 2

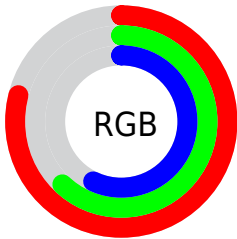
Format	Color
R _Y B	202, 160, 145
Decimal	13278609
CIE Lab	68.54, 14.98, 12.69
CIE LCh	69, 19.637, 40.274
Yxy	38.7148, 0.3697, 0.3447
Android (android.graphics.Color)	4291468689 (0xFFCA9D91)
YUV	169.0870, -11.8749, 28.8647
Hunter-Lab	62.2212, 10.2393, 12.9936

Details

The Hex color **CA9D91** is a light color, and the websafe version is hex **CC9999**. A complement of this color would be **91BECA**, and the grayscale version is **A9A9A9**.

A 20% lighter version of the original color is **FFD4C7**, and **936A5F** is the 20% darker color. If you saturate the color by 10%, you get **CA8D7D**, and if you desaturate by 10%, it is **CAADA5**.

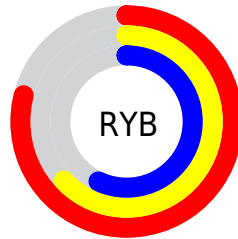
Distribution



Red (79%)

Green (62%)

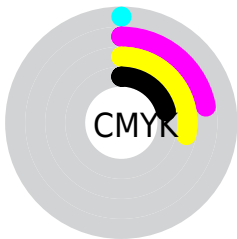
Blue (57%)



Red (79%)

Yellow (63%)

Blue (57%)

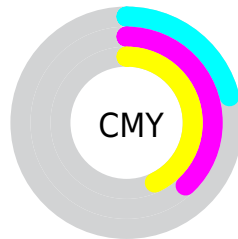


Cyan (0%)

Magenta (22%)

Yellow (28%)

Black (21%)



Cyan (21%)

Magenta (38%)

Yellow (43%)

Brightness & Saturation Gradients

These gradients show how the Hex color CA9D91 changes by changing the brightness by 10 percent. The first figure shows a shift by +10% for each color and the second figure -10%.

Similar to the brightness gradients but the following saturation gradients show a change of the Hex color CA9D91 by changing the saturation by 10% instead.

CA9D91

CA9D91

FFFFFF

AE8377

FFD4C7

936A5F

FFF0E3

785147

5F3A30

46241C

2F0F01

140000

000000

CA9D91

CA9D91

CA8D7D

CAADA5

CA7D69

CABDB9

CA6D54

CACDCE

CA5D40

CADDE2

CA4D2C

CAEDF6

CA3D18

CAFDF6

CA2D04

CAFFFF

CA2B00

Harmonies

Analogous

The Analogous color harmony consists of three colors that are next to each other on the color wheel.



CC9BA2



CA9D91



BFA286

Triad

The Triadic color harmony groups three colors that are evenly spaced from another and form a triangle on the color wheel.



CA9D91



87B09B



9BA7CA

Complementary

The Complementary color scheme is a pair of colors which are on the opposite of each other on the color wheel.



CA9D91



91BECA

Split Complementary

Split-complementary colors differ from the complementary color scheme. The scheme consists of three colors, the original color and two neighbors of the complement color.



85ACC8



CA9D91



79B1AD

Square

The Square scheme is like the rectangle color scheme, but the four colors are evenly spaced on the color wheel.



CA9D91



9AAD8C



78B0BD



B2A1C2

Rectangle

The Rectangle color scheme consists of four colors that form a rectangle on the color wheel.



CA9D91



B5A684



78B0BD



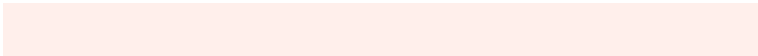
93A9CA

Sweetspot

The Sweet Spot groups the original color and five complimentary colors.



CA9D91



FFEFE8



CA91BF



807573



000000



808080

Same Dimension

The Same Dimension uses a secret algorithm to generate beautiful new colors.



CA9D91



FFBBA8



CAB991



665E5C



A62300



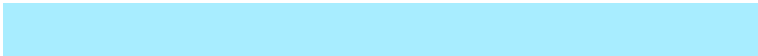
260800

Inverse Universe

The Inverse Universe completely reimagines the original color for something new.



91BECA



A8EDFF



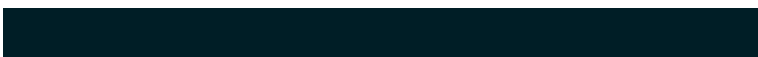
91A2CA



5C6466



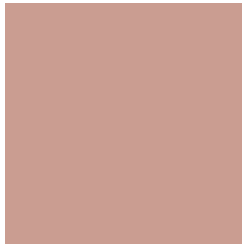
0083A6



001E26

Previews

White Background



This preview shows how the Hex color CA9D91 looks on a white background.

Color Contrast Check

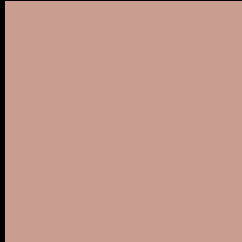
Large Text (above 18pt) WCAG AA × Fail

Any Text WCAG AA × Fail

Large Text (above 18pt) WCAG AAA × Fail

Any Text WCAG AAA × Fail

Black Background



This preview shows how the Hex color CA9D91 looks on a black background.

Color Contrast Check

Large Text (above 18pt) WCAG AA ✓ Pass

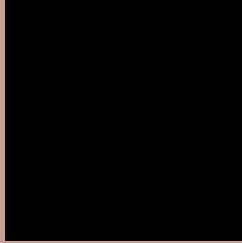
Any Text WCAG AA ✓ Pass

Large Text (above 18pt) WCAG AAA ✓ Pass

Any Text WCAG AAA ✓ Pass

If you want to check with other color combinations, try the [Color Contrast Checker](#).

Hex CA9D91 Background



This preview shows how black text looks on a background with the Hex color CA9D91.

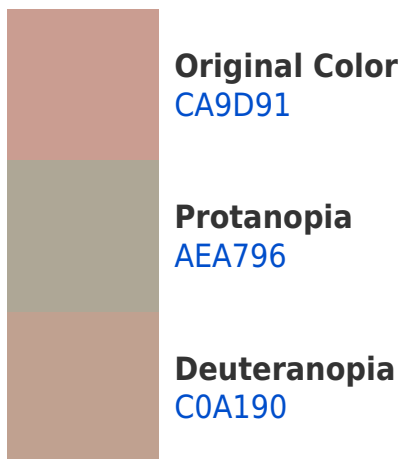


This preview shows how white text looks on a background with the Hex color CA9D91.

Color Blindness Simulation

Color vision deficiency is a very complex topic, and I could not describe the different causes any better than Wikipedia does, so if you want to learn more, you should check out their [article about color blindness](#).

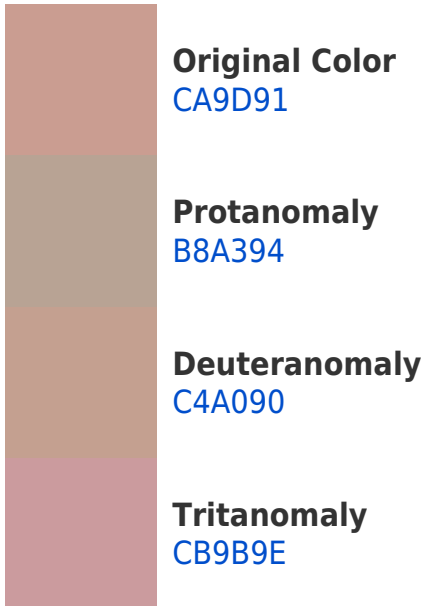
Dichromacy



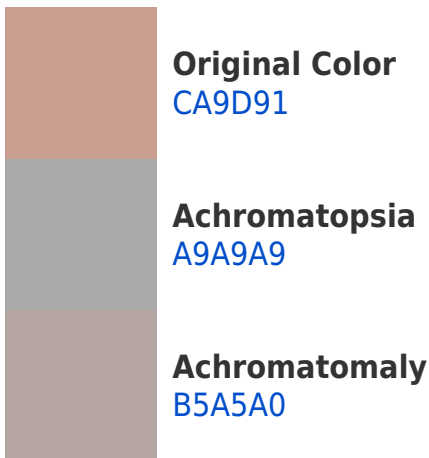


Tritanopia
CC9AA6

Trichromacy



Monochromacy



CSS Examples

Text

The CSS property to change the color of the text to Hex CA9D91 is called "color". The color property can be set on classes, ids or directly on the HTML element.

This example shows how text in the color #CA9D91 looks like.

```
.text, #text, p{  
    color:#CA9D91  
}
```

If you want to add a text shadow in that color use the text-shadow property, you can generate a text shadow directly with our [CSS Text Shadow Generator](#).

Here you see how black text with a 4 pixel #CA9D91 colored shadow looks like.

```
.shadow{ text-shadow: 4px 4px 2px #CA9D91
}
```

Border

The CSS property to change the border of an element to Hex CA9D91 is called "border". The border property can be set on classes, ids or directly on the HTML element.

This example shows the color as border, it can be applied via the CSS property "border" or "border-color".

```
.border, #border, table{ border:4px solid
#CA9D91 }
```

If only the border color should be changed use the property `border-color`.

```
.border{ border-color:#CA9D91 }
```

If you want to add a box shadow in that color use:

Here you see how a box with a 4 pixel #CA9D91 colored shadow looks like.

```
.boxshadow{ -moz-box-shadow:4px 4px 4px  
4px #CA9D91; -webkit-box-shadow:4px 4px  
4px 4px #CA9D91; box-shadow:4px 4px 4px  
4px #CA9D91 }
```

Background

The CSS property to change the background color of an element to Hex CA9D91 is called "background". The background property can be set on classes, ids or directly on the HTML element.

```
.background, #background, body{  
background:#CA9D91 }
```

If only the background color should be changed can be used:

```
.background{ background-color:#CA9D91 }
```

This example shows the color as background, it is applied via the CSS property "background".

To optimize and compress your CSS code, you can use our [online CSS compressor and optimizer](#) based on csstidy. If you want to create a linear or radial gradient as background or border, check our [CSS Gradient Generator](#).

Hey! You found this booklet interesting? Support Converting Colors with the new Membership Option!

The pro membership hides all ads, plus gives you double the colors in the color bucket, and more awesome pro features!

[Learn more, Memberships starting at \\$2.50/m!](#)

**Follow me
on Twitter!**

@ConvertingColor