

# Converting Colors

Hex(CA9D99)

Have a look what the booklet for  
Hex(CA9D99) contains.

<b>Hex(CA9D99)</b> .....	3
<b><i>Conversions</i></b> .....	4
<b><i>Details</i></b> .....	6
<b><i>Harmonies</i></b> .....	11
<b><i>Previews</i></b> .....	23
<b><i>Color Blindness Simulation</i></b> .....	26
<b><i>CSS Examples</i></b> .....	29

# **Color**

**Hex(CA9D99)**

# Conversions

## Conversions Part 1

<b>Format</b>	<b>Color</b>
Hex	CA9D99
RGB	202, 157, 153
RGB Percent	79%, 62%, 60%
CMY	0.2078, 0.3843, 0.4000
CMYK	0.00, 0.22, 0.24, 0.21
HSL	5°, 32%, 70%
HSV	5°, 24%, 79%
XYZ	42.1639, 38.9704, 35.4368
YIQ	169.9990, 28.1040, 8.2960

# Conversions

## Conversions Part 2

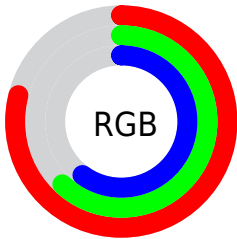
Format	Color
R <sub>Y</sub> B	202, 157, 153
Decimal	13278617
CIE Lab	68.73, 16.12, 8.51
CIE LCh	69, 18.229, 27.846
Yxy	38.9704, 0.3617, 0.3343
Android (android.graphics.Color)	4291468697 (0xFFCA9D99)
YUV	169.9990, -8.3805, 28.0649
Hunter-Lab	62.4263, 11.3162, 10.0420

# Details

The Hex color **CA9D99** is a light color, and the websafe version is hex **CC9999**. A complement of this color would be **99C6CA**, and the grayscale version is **AAAAAA**.

A 20% lighter version of the original color is **FFD4CF**, and **936A66** is the 20% darker color. If you saturate the color by 10%, you get **CA8A85**, and if you desaturate by 10%, it is **CAB0AD**.

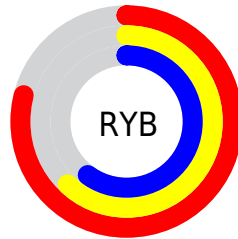
# Distribution



Red (79%)

Green (62%)

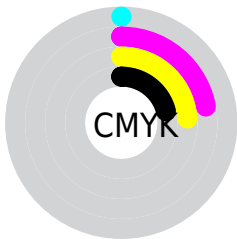
Blue (60%)



Red (79%)

Yellow (62%)

Blue (60%)

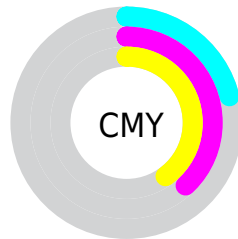


Cyan (0%)

Magenta (22%)

Yellow (24%)

Black (21%)



Cyan (21%)

Magenta (38%)

Yellow (40%)

# Brightness & Saturation Gradients

These gradients show how the Hex color CA9D99 changes by changing the brightness by 10 percent. The first figure shows a shift by +10% for each color and the second figure -10%.

Similar to the brightness gradients but the following saturation gradients show a change of the Hex color CA9D99 by changing the saturation by 10% instead.



 CA9D99

 CA9D99

FFFFFF

 AE837F

 FFD4CF

 936A66

 FFF0EC

 79514E

 5F3A37

 462422

 2F0F0C

 170000

 000000

 CA9D99

 CA9D99

CA8A85

CAB0AD

CA7871

CAC2C1

CA655C

CAD5D6

CA5348

CAE7EA

CA4034

CAFAFE

CA2E20

CAFFFF

CA1B0C

CA1000

# Harmonies

## Analogous

The Analogous color harmony consists of three colors that are next to each other on the color wheel.



C89CA9



CA9D99



C3A18C

# Triad

The Triadic color harmony groups three colors that are evenly spaced from another and form a triangle on the color wheel.



CA9D99



91AF96



93A9C8

# Complementary

The Complementary color scheme is a pair of colors which are on the opposite of each other on the color wheel.



CA9D99



99C6CA

# Split Complementary

Split-complementary colors differ from the complementary color scheme. The scheme consists of three colors, the original color and two neighbors of the complement color.



82AEC3



CA9D99



82B1A6

# Square

The Square scheme is like the rectangle color scheme, but the four colors are evenly spaced on the color wheel.



CA9D99



A4AB8A



7BB1B6



A9A4C5

# Rectangle

The Rectangle color scheme consists of four colors that form a rectangle on the color wheel.



CA9D99



BBA488



7BB1B6



8DABC7

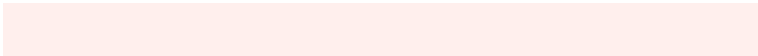


# Sweetspot

The Sweet Spot groups the original color and five complimentary colors.



CA9D99



FFEDED



CA99C7



807675



000000



808080



# Same Dimension

The Same Dimension uses a secret algorithm to generate beautiful new colors.



CA9D99



FFBBB5



CAB599



665D5C



A60E00



260300



# Inverse Universe

The Inverse Universe completely reimagines the original color for something new.



99C6CA



B5F9FF



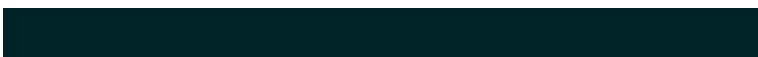
99AECA



5C6566



0098A6

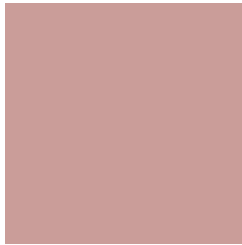


002326



# Previews

## White Background



This preview shows how the Hex color CA9D99 looks on a white background.

## Color Contrast Check

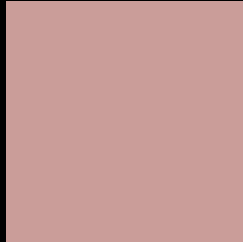
Large Text (above 18pt) WCAG AA × Fail

Any Text WCAG AA × Fail

Large Text (above 18pt) WCAG AAA × Fail

Any Text WCAG AAA × Fail

# Black Background



This preview shows how the Hex color CA9D99 looks on a black background.

## Color Contrast Check

Large Text (above 18pt) WCAG AA ✓ Pass

Any Text WCAG AA ✓ Pass

Large Text (above 18pt) WCAG AAA ✓ Pass

Any Text WCAG AAA ✓ Pass

If you want to check with other color combinations, try the [Color Contrast Checker](#).



## Hex CA9D99 Background



This preview shows how black text looks on a background with the Hex color CA9D99.

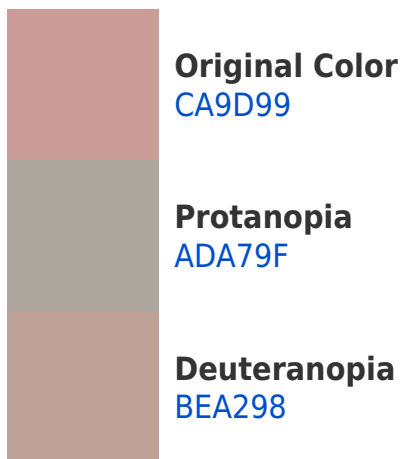


This preview shows how white text looks on a background with the Hex color CA9D99.

# Color Blindness Simulation

Color vision deficiency is a very complex topic, and I could not describe the different causes any better than Wikipedia does, so if you want to learn more, you should check out their [article about color blindness](#).

## Dichromacy





**Tritanopia**  
CC9BA7

# Trichromacy



**Original Color**  
CA9D99

**Protanomaly**  
B8A39D

**Deuteranomaly**  
C2A098

**Tritanomaly**  
CB9CA2

# Monochromacy



**Original Color**  
CA9D99

**Achromatopsia**  
AAAAAA

**Achromatomaly**  
B6A5A4

# CSS Examples

## Text

The CSS property to change the color of the text to Hex CA9D99 is called "color". The color property can be set on classes, ids or directly on the HTML element.

This example shows how text in the color #CA9D99 looks like.

```
.text, #text, p{  
    color:#CA9D99  
}
```

If you want to add a text shadow in that color use the text-shadow property, you can generate a text shadow directly with our [CSS Text Shadow Generator](#).

Here you see how black text with a 4 pixel #CA9D99 colored shadow looks like.

```
.shadow{ text-shadow: 4px 4px 2px #CA9D99
}
```

## Border

The CSS property to change the border of an element to Hex CA9D99 is called "border". The border property can be set on classes, ids or directly on the HTML element.

This example shows the color as border, it can be applied via the CSS property "border" or "border-color".

```
.border, #border, table{ border:4px solid
#CA9D99 }
```

If only the border color should be changed use the property border-color.

```
.border{ border-color:#CA9D99 }
```

If you want to add a box shadow in that color use:

Here you see how a box with a 4 pixel #CA9D99 colored shadow looks like.

```
.boxshadow{ -moz-box-shadow:4px 4px 4px  
4px #CA9D99; -webkit-box-shadow:4px 4px  
4px 4px #CA9D99; box-shadow:4px 4px 4px  
4px #CA9D99 }
```

# Background

The CSS property to change the background color of an element to Hex CA9D99 is called "background". The background property can be set on classes, ids or directly on the HTML element.

```
.background, #background, body{  
background:#CA9D99 }
```

If only the background color should be changed can be used:

```
.background{ background-color:#CA9D99 }
```

This example shows the color as background, it is applied via the CSS property "background".

To optimize and compress your CSS code, you can use our [online CSS compressor and optimizer](#) based on csstidy. If you want to create a linear or radial gradient as background or border, check our [CSS Gradient Generator](#).



Hey! You found this booklet interesting? Support Converting Colors with the new Membership Option!

The pro membership hides all ads, plus gives you double the colors in the color bucket, and more awesome pro features!

**[Learn more, Memberships starting at \\$2.50/m!](#)**

**Follow me  
on Twitter!**

@ConvertingColor