

Converting Colors

Hex(CA9F9F)

Have a look what the booklet for
Hex(CA9F9F) contains.

Hex(CA9F9F)	3
<i>Conversions</i>	4
<i>Details</i>	6
<i>Harmonies</i>	11
<i>Previews</i>	23
<i>Color Blindness Simulation</i>	26
<i>CSS Examples</i>	29

Color

Hex(CA9F9F)

Conversions

Conversions Part 1

Format	Color
Hex	CA9F9F
RGB	202, 159, 159
RGB Percent	79%, 62%, 62%
CMY	0.2078, 0.3765, 0.3765
CMYK	0.00, 0.21, 0.21, 0.21
HSL	0°, 29%, 71%
HSV	0°, 21%, 79%
XYZ	43.0133, 39.8560, 38.2268
YIQ	171.8570, 25.6280, 9.1160

Conversions

Conversions Part 2

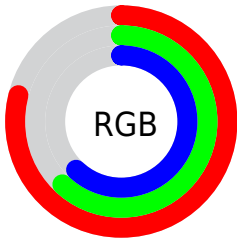
Format	Color
R _Y B	202, 159, 159
Decimal	13279135
CIE Lab	69.37, 15.92, 6.09
CIE LCh	69, 17.042, 20.949
Yxy	39.8560, 0.3552, 0.3291
Android (android.graphics.Color)	4291469215 (0xFFCA9F9F)
YUV	171.8570, -6.3385, 26.4354
Hunter-Lab	63.1316, 11.1364, 8.2915

Details

The Hex color **CA9F9F** is a light color, and the websafe version is hex **CC9999**. A complement of this color would be **9FCACA**, and the grayscale version is **ACACAC**.

A 20% lighter version of the original color is **FFD6D6**, and **936B6C** is the 20% darker color. If you saturate the color by 10%, you get **CA8B8B**, and if you desaturate by 10%, it is **CAB3B3**.

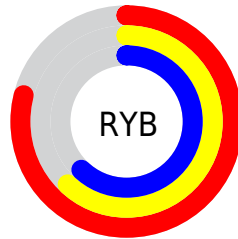
Distribution



Red (79%)

Green (62%)

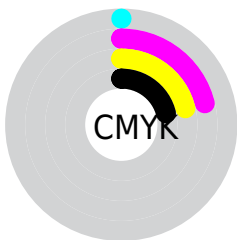
Blue (62%)



Red (79%)

Yellow (62%)

Blue (62%)

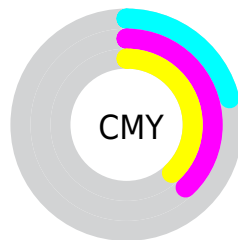


Cyan (0%)

Magenta (21%)

Yellow (21%)

Black (21%)



Cyan (21%)

Magenta (38%)

Yellow (38%)

Brightness & Saturation Gradients

These gradients show how the Hex color CA9F9F changes by changing the brightness by 10 percent. The first figure shows a shift by +10% for each color and the second figure -10%.

Similar to the brightness gradients but the following saturation gradients show a change of the Hex color CA9F9F by changing the saturation by 10% instead.



CA9F9F



CA9F9F

FFFFFF



AE8585



FFD6D6



936B6C



FFF2F2



795353



5F3C3C



472627



2F1112



1A0001



000000



CA9F9F



CA9F9F

 CA8B8B

 CAB3B3

 CA7777

 CAC7C7

 CA6262

 CADCDC

 CA4E4E

 CAF0F0

 CA3A3A

 CAFFFF

 CA2626

 CA1212

 CA0000

Harmonies

Analogous

The Analogous color harmony consists of three colors that are next to each other on the color wheel.



C69FAF



CA9F9F



C6A292

Triad

The Triadic color harmony groups three colors that are evenly spaced from another and form a triangle on the color wheel.



CA9F9F



98B096



92ACC7

Complementary

The Complementary color scheme is a pair of colors which are on the opposite of each other on the color wheel.



CA9F9F



9FCACA

Split Complementary

Split-complementary colors differ from the complementary color scheme. The scheme consists of three colors, the original color and two neighbors of the complement color.



84B0C1



CA9F9F



89B2A4

Square

The Square scheme is like the rectangle color scheme, but the four colors are evenly spaced on the color wheel.



CA9F9F



AAAC8C



81B2B4



A6A7C6

Rectangle

The Rectangle color scheme consists of four colors that form a rectangle on the color wheel.



CA9F9F



BFA58D



81B2B4



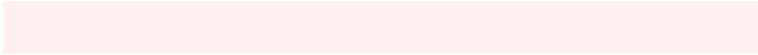
8DAEC6

Sweetspot

The Sweet Spot groups the original color and five complimentary colors.



CA9F9F



FFF0F0



CA9FCA



807777



000000



808080

Same Dimension

The Same Dimension uses a secret algorithm to generate beautiful new colors.



CA9F9F



FFBDBD



CAB59F



665C5C



A60000



260000

Inverse Universe

The Inverse Universe completely reimagines the original color for something new.



9FCACA



BDFFFF



9FB5CA



5C6666



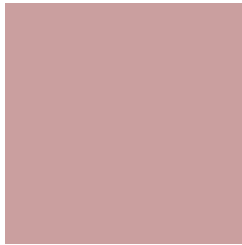
00A6A6



002626

Previews

White Background



This preview shows how the Hex color CA9F9F looks on a white background.

Color Contrast Check

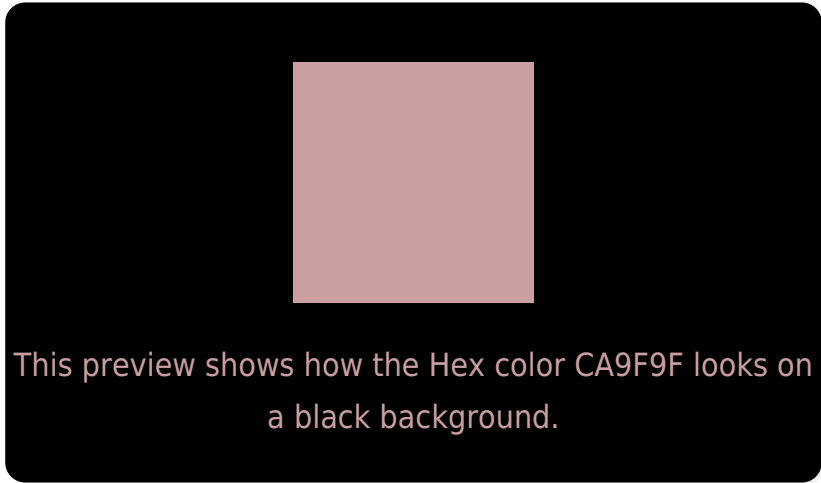
Large Text (above 18pt) WCAG AA × Fail

Any Text WCAG AA × Fail

Large Text (above 18pt) WCAG AAA × Fail

Any Text WCAG AAA × Fail

Black Background



Color Contrast Check

Large Text (above 18pt) WCAG AA ✓ Pass

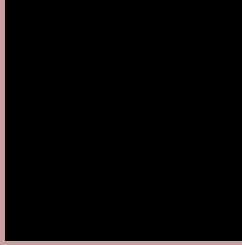
Any Text WCAG AA ✓ Pass

Large Text (above 18pt) WCAG AAA ✓ Pass

Any Text WCAG AAA ✓ Pass

If you want to check with other color combinations, try the [Color Contrast Checker](#).

Hex CA9F9F Background



This preview shows how black text looks on a background with the Hex color CA9F9F.



This preview shows how white text looks on a background with the Hex color CA9F9F.

Color Blindness Simulation

Color vision deficiency is a very complex topic, and I could not describe the different causes any better than Wikipedia does, so if you want to learn more, you should check out their [article about color blindness](#).

Dichromacy





Tritanopia
CB9DAA

Trichromacy



Original Color
CA9F9F

Protanomaly
B8A5A2

Deuteranomaly
C2A29E

Tritanomaly
CB9EA6

Monochromacy



Original Color
CA9F9F

Achromatopsia
ACACAC

Achromatomaly
B7A7A7

CSS Examples

Text

The CSS property to change the color of the text to Hex CA9F9F is called "color". The color property can be set on classes, ids or directly on the HTML element.

This example shows how text in the color #CA9F9F looks like.

```
.text, #text, p{  
    color:#CA9F9F  
}
```

If you want to add a text shadow in that color use the text-shadow property, you can generate a text shadow directly with our [CSS Text Shadow Generator](#).

Here you see how black text with a 4 pixel #CA9F9F colored shadow looks like.

```
.shadow{ text-shadow: 4px 4px 2px #CA9F9F  
}
```

Border

The CSS property to change the border of an element to Hex CA9F9F is called "border". The border property can be set on classes, ids or directly on the HTML element.

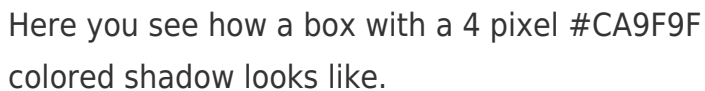
This example shows the color as border, it can be applied via the CSS property "border" or "border-color".

```
.border, #border, table{ border:4px solid  
#CA9F9F }
```

If only the border color should be changed use the property `border-color`.

```
.border{ border-color:#CA9F9F }
```

If you want to add a box shadow in that color use:



Here you see how a box with a 4 pixel #CA9F9F colored shadow looks like.

```
.boxshadow{ -moz-box-shadow:4px 4px 4px  
4px #CA9F9F; -webkit-box-shadow:4px 4px  
4px 4px #CA9F9F; box-shadow:4px 4px 4px  
4px #CA9F9F }
```

Background

The CSS property to change the background color of an element to Hex CA9F9F is called "background". The background property can be set on classes, ids or directly on the HTML element.

```
.background, #background, body{  
background:#CA9F9F }
```

If only the background color should be changed can be used:

```
.background{ background-color:#CA9F9F }
```

This example shows the color as background, it is applied via the CSS property "background".

To optimize and compress your CSS code, you can use our [online CSS compressor and optimizer](#) based on csstidy. If you want to create a linear or radial gradient as background or border, check our [CSS Gradient Generator](#).

Hey! You found this booklet interesting? Support Converting Colors with the new Membership Option!

The pro membership hides all ads, plus gives you double the colors in the color bucket, and more awesome pro features!

[Learn more, Memberships starting at \\$2.50/m!](#)

**Follow me
on Twitter!**

@ConvertingColor