

Converting Colors

Hex(CAA2A4)

Have a look what the booklet for
Hex(CAA2A4) contains.

Hex(CAA2A4)	3
<i>Conversions</i>	4
<i>Details</i>	6
<i>Harmonies</i>	11
<i>Previews</i>	23
<i>Color Blindness Simulation</i>	26
<i>CSS Examples</i>	29

Color

Hex(CAA2A4)

Conversions

Conversions Part 1

Format	Color
Hex	CAA2A4
RGB	202, 162, 164
RGB Percent	79%, 64%, 64%
CMY	0.2078, 0.3647, 0.3569
CMYK	0.00, 0.20, 0.19, 0.21
HSL	357°, 27%, 71%
HSV	357°, 20%, 79%
XYZ	43.9783, 41.0776, 40.7328
YIQ	174.1880, 23.1980, 9.1020

Conversions

Conversions Part 2

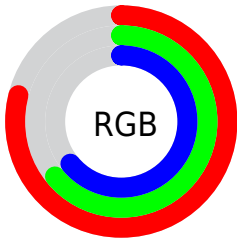
Format	Color
R_{YB}	202, 162, 164
Decimal	13279908
CIE _{Lab}	70.23, 15.04, 4.56
CIE _{LCh}	70, 15.721, 16.876
Yxy	41.0776, 0.3496, 0.3266
Android (android.graphics.Color)	4291469988 (0xFFCAA2A4)
YUV	174.1880, -5.0227, 24.3911
Hunter-Lab	64.0918, 10.3220, 7.1831

Details

The Hex color **CAA2A4** is a light color, and the websafe version is hex **CC9999**. A complement of this color would be **A2CAC8**, and the grayscale version is **AEAEAE**.

A 20% lighter version of the original color is **FFD9DB**, and **936E70** is the 20% darker color. If you saturate the color by 10%, you get **CA8E91**, and if you desaturate by 10%, it is **CAB6B7**.

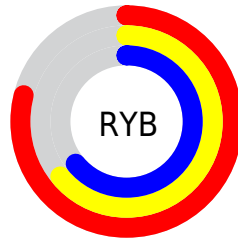
Distribution



Red (79%)

Green (64%)

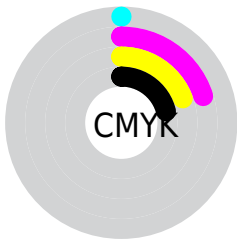
Blue (64%)



Red (79%)

Yellow (64%)

Blue (64%)

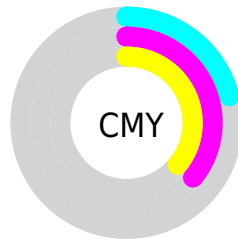


Cyan (0%)

Magenta (20%)

Yellow (19%)

Black (21%)



Cyan (21%)

Magenta (36%)

Yellow (36%)

Brightness & Saturation Gradients

These gradients show how the Hex color CAA2A4 changes by changing the brightness by 10 percent. The first figure shows a shift by +10% for each color and the second figure -10%.

Similar to the brightness gradients but the following saturation gradients show a change of the Hex color CAA2A4 by changing the saturation by 10% instead.



CAA2A4



CAA2A4

FFFFFF



AE888A



FFD9DB



936E70



FFF5F7



795658



603E41



47282B



301316



1D0001



000000



CAA2A4



CAA2A4

 CA8E91

 CAB6B7

 CA7A7E

 CACACA

 CA656A

 CADFDE

 CA5157

 CAF3F1

 CA3D44

 CAFFFF

 CA2931

 CA151E

 CA000A

Harmonies

Analogous

The Analogous color harmony consists of three colors that are next to each other on the color wheel.



C5A2B3



CAA2A4



C7A497

Triad

The Triadic color harmony groups three colors that are evenly spaced from another and form a triangle on the color wheel.



CAA2A4



9EB198



95AFC7

Complementary

The Complementary color scheme is a pair of colors which are on the opposite of each other on the color wheel.



CAA2A4



A2CAC8

Split Complementary

Split-complementary colors differ from the complementary color scheme. The scheme consists of three colors, the original color and two neighbors of the complement color.



89B2C0



CAA2A4



8FB4A5

Square

The Square scheme is like the rectangle color scheme, but the four colors are evenly spaced on the color wheel.



CAA2A4



AEAD90



87B4B3



A6AAC7

Rectangle

The Rectangle color scheme consists of four colors that form a rectangle on the color wheel.



CAA2A4



C1A792



87B4B3



90B0C5

Sweetspot

The Sweet Spot groups the original color and five complimentary colors.



CAA2A4



FFF0F0



C8A2CA



807777



000000



808080

Same Dimension

The Same Dimension uses a secret algorithm to generate beautiful new colors.



CAA2A4



FFC2C5



CAB3A2



665C5C



A60008



260002

Inverse Universe

The Inverse Universe completely reimagines the original color for something new.



CAA2A4



FFC2C5



A2B8CA



665C5C



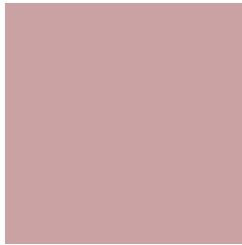
A60008



260002

Previews

White Background



This preview shows how the Hex color CAA2A4 looks on a white background.

Color Contrast Check

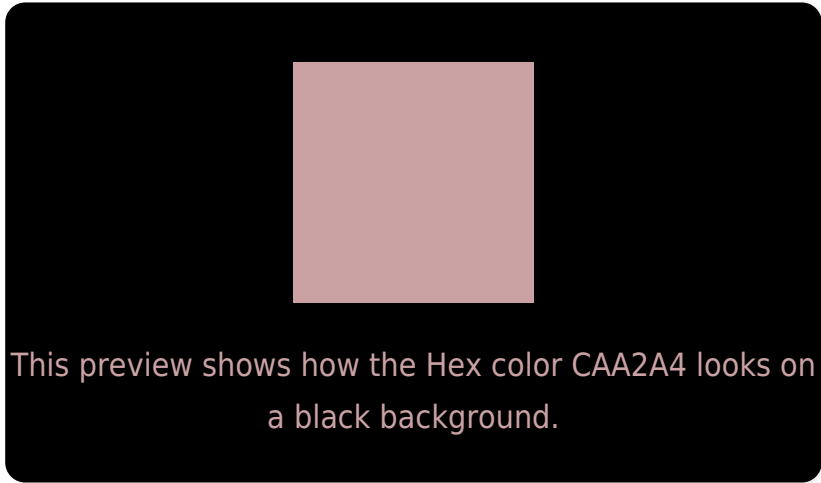
Large Text (above 18pt) WCAG AA × Fail

Any Text WCAG AA × Fail

Large Text (above 18pt) WCAG AAA × Fail

Any Text WCAG AAA × Fail

Black Background



Color Contrast Check

Large Text (above 18pt) WCAG AA ✓ Pass

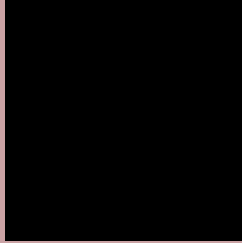
Any Text WCAG AA ✓ Pass

Large Text (above 18pt) WCAG AAA ✓ Pass

Any Text WCAG AAA ✓ Pass

If you want to check with other color combinations, try the [Color Contrast Checker](#).

Hex CAA2A4 Background



This preview shows how black text looks on a background with the Hex color CAA2A4.

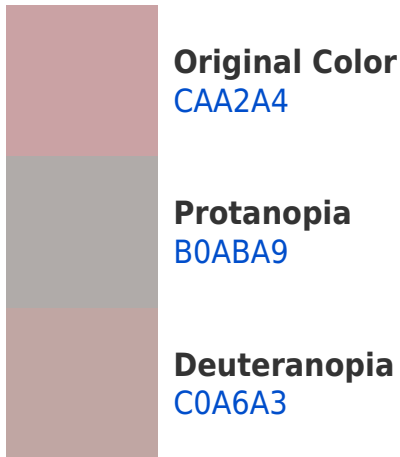


This preview shows how white text looks on a background with the Hex color CAA2A4.

Color Blindness Simulation

Color vision deficiency is a very complex topic, and I could not describe the different causes any better than Wikipedia does, so if you want to learn more, you should check out their [article about color blindness](#).

Dichromacy



Trichromacy



Original Color
CAA2A4

Protanomaly
B9A8A7

Deuteranomaly
C4A5A3

Tritanomaly
CBA1AA

Monochromacy



Original Color
CAA2A4

Achromatopsia
AEAEAE

Achromatomaly
B8AAAA

CSS Examples

Text

The CSS property to change the color of the text to Hex CAA2A4 is called "color". The color property can be set on classes, ids or directly on the HTML element.

This example shows how text in the color #CAA2A4 looks like.

```
.text, #text, p{  
    color:#CAA2A4  
}
```

If you want to add a text shadow in that color use the text-shadow property, you can generate a text shadow directly with our [CSS Text Shadow Generator](#).

Here you see how black text with a 4 pixel #CAA2A4 colored shadow looks like.

```
.shadow{ text-shadow: 4px 4px 2px #CAA2A4
}
```

Border

The CSS property to change the border of an element to Hex CAA2A4 is called "border". The border property can be set on classes, ids or directly on the HTML element.

This example shows the color as border, it can be applied via the CSS property "border" or "border-color".

```
.border, #border, table{ border:4px solid
#CAA2A4 }
```

If only the border color should be changed use the property border-color.

```
.border{ border-color:#CAA2A4 }
```

If you want to add a box shadow in that color use:

Here you see how a box with a 4 pixel #CAA2A4 colored shadow looks like.

```
.boxshadow{ -moz-box-shadow:4px 4px 4px  
4px #CAA2A4; -webkit-box-shadow:4px 4px  
4px 4px #CAA2A4; box-shadow:4px 4px 4px  
4px #CAA2A4 }
```

Background

The CSS property to change the background color of an element to Hex CAA2A4 is called "background". The background property can be set on classes, ids or directly on the HTML element.

```
.background, #background, body{  
background:#CAA2A4 }
```

If only the background color should be changed can be used:

```
.background{ background-color:#CAA2A4 }
```

This example shows the color as background, it is applied via the CSS property "background".

To optimize and compress your CSS code, you can use our [online CSS compressor and optimizer](#) based on csstidy. If you want to create a linear or radial gradient as background or border, check our [CSS Gradient Generator](#).

Hey! You found this booklet interesting? Support Converting Colors with the new Membership Option!

The pro membership hides all ads, plus gives you double the colors in the color bucket, and more awesome pro features!

[Learn more, Memberships starting at \\$2.50/m!](#)

**Follow me
on Twitter!**

@ConvertingColor