

Converting Colors

Hex(CAA393)

Have a look what the booklet for
Hex(CAA393) contains.

Hex(CAA393)	3
<i>Conversions</i>	4
<i>Details</i>	6
<i>Harmonies</i>	11
<i>Previews</i>	23
<i>Color Blindness Simulation</i>	26
<i>CSS Examples</i>	29

Color

Hex(CAA393)

Conversions

Conversions Part 1

Format	Color
Hex	CAA393
RGB	202, 163, 147
RGB Percent	79%, 64%, 58%
CMY	0.2078, 0.3608, 0.4235
CMYK	0.00, 0.19, 0.27, 0.21
HSL	17°, 34%, 68%
HSV	17°, 27%, 79%
XYZ	42.7208, 40.8575, 33.2384
YIQ	172.8370, 28.3800, 3.2920

Conversions

Conversions Part 2

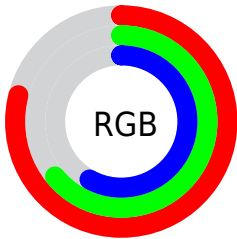
Format	Color
R _Y B	202, 170, 147
Decimal	13280147
CIE Lab	70.08, 11.99, 13.74
CIE LCh	70, 18.235, 48.900
Yxy	40.8575, 0.3657, 0.3498
Android (android.graphics.Color)	4291470227 (0xFFCAA393)
YUV	172.8370, -12.7376, 25.5760
Hunter-Lab	63.9199, 7.4404, 13.9130

Details

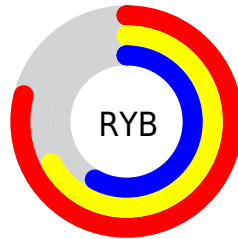
The Hex color **CAA393** is a light color, and the websafe version is hex **CC9999**. A complement of this color would be **93BACA**, and the grayscale version is **ADADAD**.

A 20% lighter version of the original color is **FFDAC9**, and **936F60** is the 20% darker color. If you saturate the color by 10%, you get **CA957F**, and if you desaturate by 10%, it is **CAB1A7**.

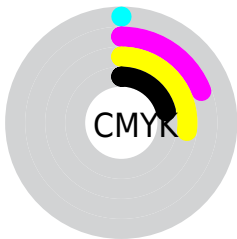
Distribution



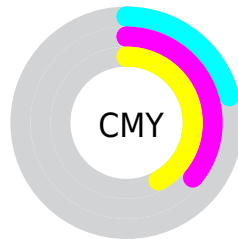
- Red (79%)
- Green (64%)
- Blue (58%)



- Red (79%)
- Yellow (67%)
- Blue (58%)



- Cyan (0%)
- Magenta (19%)
- Yellow (27%)
- Black (21%)



- Cyan (21%)
- Magenta (36%)
- Yellow (42%)

Brightness & Saturation Gradients

These gradients show how the Hex color CAA393 changes by changing the brightness by 10 percent. The first figure shows a shift by +10% for each color and the second figure -10%.

Similar to the brightness gradients but the following saturation gradients show a change of the Hex color CAA393 by changing the saturation by 10% instead.

CAA393

CAA393

FFFFFF

AE8979

FFDAC9

936F60

FFF6E5

795749

5F3F32

46291D

2F1404

190000

000000

CAA393

CAA393

■ CA957F

■ CAB1A7

■ CA866B

■ CAC0BB

■ CA7856

■ CACED0

■ CA6A42

■ CADCE4

■ CA5B2E

■ CAEBF8

■ CA4D1A

■ CAF9FF

■ CA3F06

■ CAFFFF

■ CA3B00

Harmonies

Analogous

The Analogous color harmony consists of three colors that are next to each other on the color wheel.



CEA0A1



CAA393



BEA88B

Triad

The Triadic color harmony groups three colors that are evenly spaced from another and form a triangle on the color wheel.



CAA393



89B4A4



A6A9CA

Complementary

The Complementary color scheme is a pair of colors which are on the opposite of each other on the color wheel.



CAA393



93BACA

Split Complementary

Split-complementary colors differ from the complementary color scheme. The scheme consists of three colors, the original color and two neighbors of the complement color.



91AFCB



CAA393



7FB5B5

Square

The Square scheme is like the rectangle color scheme, but the four colors are evenly spaced on the color wheel.



CAA393



9AB295



82B3C4



BBA4C1

Rectangle

The Rectangle color scheme consists of four colors that form a rectangle on the color wheel.



CAA393



B3AC8B



82B3C4



9FABCC

Sweetspot

The Sweet Spot groups the original color and five complimentary colors.



CAA393



FFF1EB



CA93BA



807673



000000



808080

Same Dimension

The Same Dimension uses a secret algorithm to generate beautiful new colors.



CAA393



FFC3AB



CABE93



665F5C



A63000



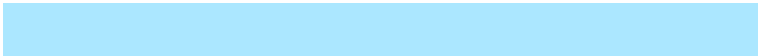
260B00

Inverse Universe

The Inverse Universe completely reimagines the original color for something new.



93BACA



ABE7FF



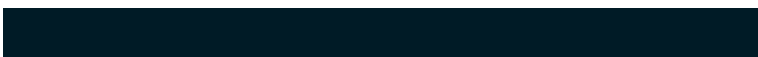
939FCA



5C6366



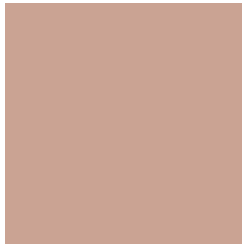
0076A6



001B26

Previews

White Background



This preview shows how the Hex color CAA393 looks on a white background.

Color Contrast Check

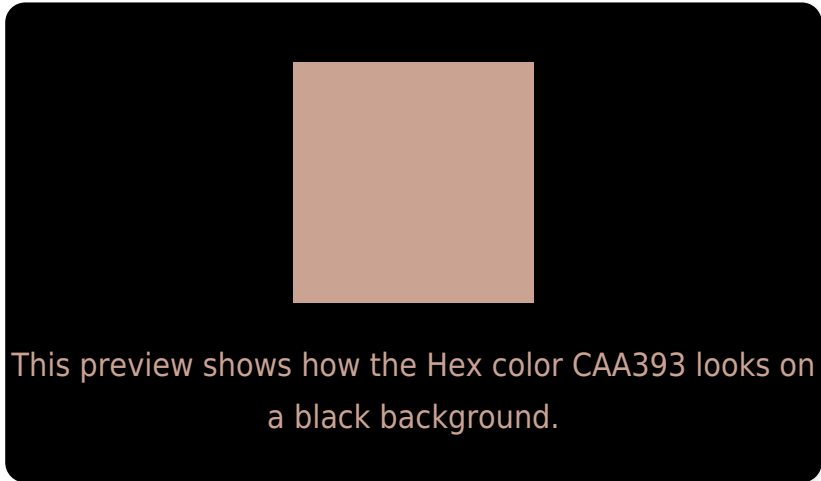
Large Text (above 18pt) WCAG AA × Fail

Any Text WCAG AA × Fail

Large Text (above 18pt) WCAG AAA × Fail

Any Text WCAG AAA × Fail

Black Background



Color Contrast Check

Large Text (above 18pt) WCAG AA ✓ Pass

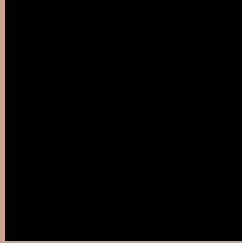
Any Text WCAG AA ✓ Pass

Large Text (above 18pt) WCAG AAA ✓ Pass

Any Text WCAG AAA ✓ Pass

If you want to check with other color combinations, try the [Color Contrast Checker](#).

Hex CAA393 Background



This preview shows how black text looks on a background with the Hex color CAA393.



This preview shows how white text looks on a background with the Hex color CAA393.

Color Blindness Simulation

Color vision deficiency is a very complex topic, and I could not describe the different causes any better than Wikipedia does, so if you want to learn more, you should check out their [article about color blindness](#).

Dichromacy



Original Color
CAA393

Protanopia
B3AB97

Deuteranopia
C5A593



Tritanopia
CD9FAC

Trichromacy



Original Color
CAA393

Protanomaly
BBA896

Deuteranomaly
C7A493

Tritanomaly
CCA0A3

Monochromacy



Original Color
CAA393

Achromatopsia
ADADAD

Achromatomaly
B8A9A4

CSS Examples

Text

The CSS property to change the color of the text to Hex CAA393 is called "color". The color property can be set on classes, ids or directly on the HTML element.

This example shows how text in the color #CAA393 looks like.

```
.text, #text, p{  
    color:#CAA393  
}
```

If you want to add a text shadow in that color use the text-shadow property, you can generate a text shadow directly with our [CSS Text Shadow Generator](#).

Here you see how black text with a 4 pixel #CAA393 colored shadow looks like.

```
.shadow{ text-shadow: 4px 4px 2px #CAA393  
}
```

Border

The CSS property to change the border of an element to Hex CAA393 is called "border". The border property can be set on classes, ids or directly on the HTML element.

This example shows the color as border, it can be applied via the CSS property "border" or "border-color".

```
.border, #border, table{ border:4px solid  
#CAA393 }
```

If only the border color should be changed use the property `border-color`.

```
.border{ border-color:#CAA393 }
```

If you want to add a box shadow in that color use:

Here you see how a box with a 4 pixel #CAA393 colored shadow looks like.

```
.boxshadow{ -moz-box-shadow:4px 4px 4px  
4px #CAA393; -webkit-box-shadow:4px 4px  
4px 4px #CAA393; box-shadow:4px 4px 4px  
4px #CAA393 }
```

Background

The CSS property to change the background color of an element to Hex CAA393 is called "background". The background property can be set on classes, ids or directly on the HTML element.

```
.background, #background, body{  
background:#CAA393 }
```

If only the background color should be changed can be used:

```
.background{ background-color:#CAA393 }
```

This example shows the color as background, it is applied via the CSS property "background".

To optimize and compress your CSS code, you can use our [online CSS compressor and optimizer](#) based on csstidy. If you want to create a linear or radial gradient as background or border, check our [CSS Gradient Generator](#).

Hey! You found this booklet interesting? Support Converting Colors with the new Membership Option!

The pro membership hides all ads, plus gives you double the colors in the color bucket, and more awesome pro features!

[Learn more, Memberships starting at \\$2.50/m!](#)

**Follow me
on Twitter!**

@ConvertingColor