

Converting Colors

Hex(CAAAAA)

Have a look what the booklet for
Hex(CAAAAA) contains.

Hex(CAAAAA)	3
<i>Conversions</i>	4
<i>Details</i>	6
<i>Harmonies</i>	11
<i>Previews</i>	23
<i>Color Blindness Simulation</i>	26
<i>CSS Examples</i>	29

Color

Hex(CAAAAA)

Conversions

Conversions Part 1

Format	Color
Hex	CAAAAA
RGB	202, 170, 170
RGB Percent	79%, 67%, 67%
CMY	0.2078, 0.3333, 0.3333
CMYK	0.00, 0.16, 0.16, 0.21
HSL	0°, 23%, 73%
HSV	0°, 16%, 79%
XYZ	45.9875, 44.2083, 44.1395
YIQ	179.5680, 19.0720, 6.7840

Conversions

Conversions Part 2

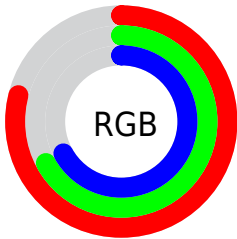
Format	Color
R_{YB}	202, 170, 170
Decimal	13281962
CIE _{Lab}	72.37, 11.63, 4.34
CIE _{LCh}	72, 12.416, 20.451
Yxy	44.2083, 0.3423, 0.3291
Android (android.graphics.Color)	4291472042 (0xFFCAA AAAA)
YUV	179.5680, -4.7170, 19.6729
Hunter-Lab	66.4893, 7.1038, 7.1824

Details

The Hex color **CAAAAA** is a light color, and the websafe version is hex **CC9999**. A complement of this color would be **AACACA**, and the grayscale version is **B4B4B4**.

A 20% lighter version of the original color is **FFE1E1**, and **947676** is the 20% darker color. If you saturate the color by 10%, you get **CA9696**, and if you desaturate by 10%, it is **CABEBE**.

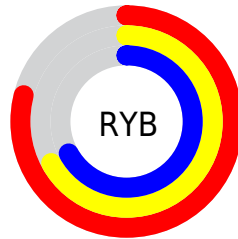
Distribution



Red (79%)

Green (67%)

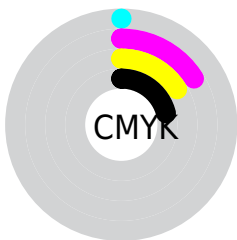
Blue (67%)



Red (79%)

Yellow (67%)

Blue (67%)

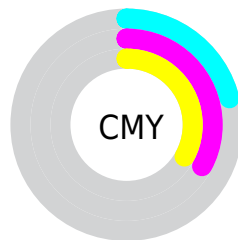


Cyan (0%)

Magenta (16%)

Yellow (16%)

Black (21%)



Cyan (21%)

Magenta (33%)

Yellow (33%)

Brightness & Saturation Gradients

These gradients show how the Hex color CAAAAA changes by changing the brightness by 10 percent. The first figure shows a shift by +10% for each color and the second figure -10%.

Similar to the brightness gradients but the following saturation gradients show a change of the Hex color CAAAAA by changing the saturation by 10% instead.



CAAAAA



CAAAAA

FFFFFF



AE8F90



FFE1E1



947676



FFFEFE



7A5D5D



604546



482F2F



311A1B



1E0000



000000



CAAAAA



CAAAAA

CA9696

CABEBE

CA8282

CAD2D2

CA6D6D

CAE7E7

CA5959

CAFBBB

CA4545

CAFFFF

CA3131

CA1D1D

CA0808

CA0000

Harmonies

Analogous

The Analogous color harmony consists of three colors that are next to each other on the color wheel.



C6AAB6



CAAAAA



C7ACA0

Triad

The Triadic color harmony groups three colors that are evenly spaced from another and form a triangle on the color wheel.



CAAAAA



A5B6A3



A1B4C8

Complementary

The Complementary color scheme is a pair of colors which are on the opposite of each other on the color wheel.



CAAAAA



AACACA

Split Complementary

Split-complementary colors differ from the complementary color scheme. The scheme consists of three colors, the original color and two neighbors of the complement color.



97B7C3



CAAAAA



9AB8AD

Square

The Square scheme is like the rectangle color scheme, but the four colors are evenly spaced on the color wheel.



CAAAAA



B2B39C



95B8B9



AFB0C7

Rectangle

The Rectangle color scheme consists of four colors that form a rectangle on the color wheel.



CAAAAA



C2AE9C



95B8B9



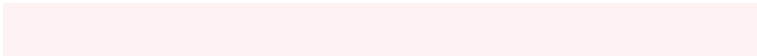
9DB5C6

Sweetspot

The Sweet Spot groups the original color and five complimentary colors.



CAAAAA



FFF2F2



CAAACA



807878



000000



808080

Same Dimension

The Same Dimension uses a secret algorithm to generate beautiful new colors.



CAAAAA



FFCF CF



CABAAA



665C5C



A60000



260000

Inverse Universe

The Inverse Universe completely reimagines the original color for something new.



AACACA



CFFFFFF



AABACA



5C6666



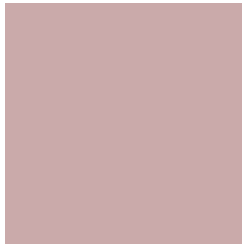
00A6A6



002626

Previews

White Background



This preview shows how the Hex color CAAAAA looks on a white background.

Color Contrast Check

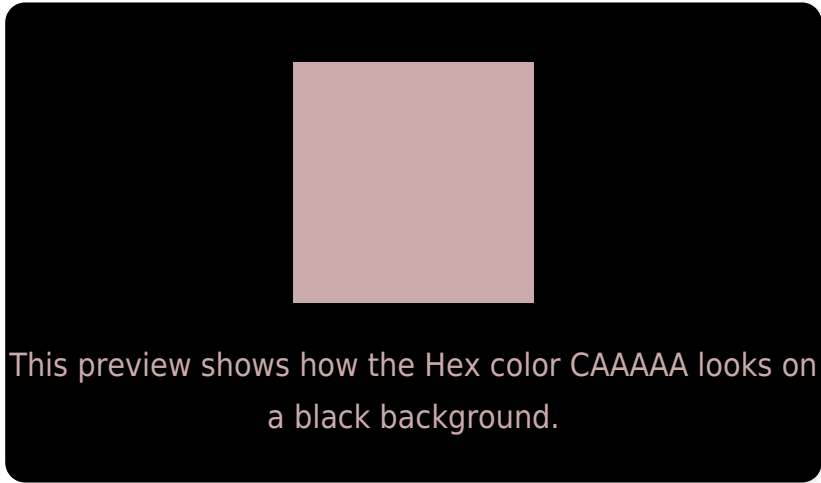
Large Text (above 18pt) WCAG AA × Fail

Any Text WCAG AA × Fail

Large Text (above 18pt) WCAG AAA × Fail

Any Text WCAG AAA × Fail

Black Background



Color Contrast Check

Large Text (above 18pt) WCAG AA ✓ Pass

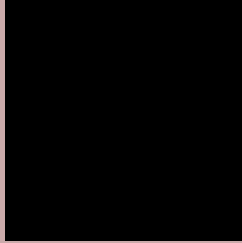
Any Text WCAG AA ✓ Pass

Large Text (above 18pt) WCAG AAA ✓ Pass

Any Text WCAG AAA ✓ Pass

If you want to check with other color combinations, try the [Color Contrast Checker](#).

Hex CAAAAA Background



This preview shows how black text looks on a background with the Hex color CAAAAA.

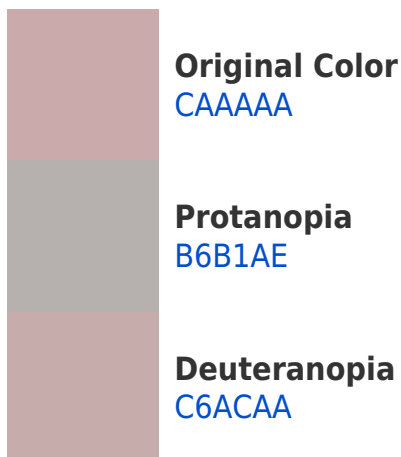


This preview shows how white text looks on a background with the Hex color CAAAAA.

Color Blindness Simulation

Color vision deficiency is a very complex topic, and I could not describe the different causes any better than Wikipedia does, so if you want to learn more, you should check out their [article about color blindness](#).

Dichromacy





Tritanopia
CBA8B5

Trichromacy



Original Color

CAAAAA

Protanomaly

BDAEAD

Deuteranomaly

C7ABAA

Tritanomaly

CBA9B1

Monochromacy



Original Color

CAAAAA

Achromatopsia

B4B4B4

Achromatomaly

BCB0B0

CSS Examples

Text

The CSS property to change the color of the text to Hex CAAAAA is called "color". The color property can be set on classes, ids or directly on the HTML element.

This example shows how text in the color #CAAAAA looks like.

```
.text, #text, p{  
    color:#CAAAAA  
}
```

If you want to add a text shadow in that color use the text-shadow property, you can generate a text shadow directly with our [CSS Text Shadow Generator](#).

Here you see how black text with a 4 pixel #CAAAAA colored shadow looks like.

```
.shadow{ text-shadow: 4px 4px 2px #CAAAAA
}
```

Border

The CSS property to change the border of an element to Hex CAAAAA is called "border". The border property can be set on classes, ids or directly on the HTML element.

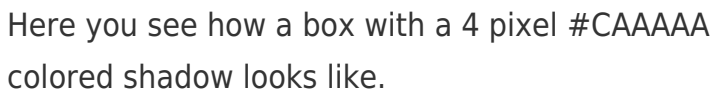
This example shows the color as border, it can be applied via the CSS property "border" or "border-color".

```
.border, #border, table{ border:4px solid
#CAAAAA }
```

If only the border color should be changed use the property `border-color`.

```
.border{ border-color:#CAAAAA }
```

If you want to add a box shadow in that color use:



Here you see how a box with a 4 pixel #CAAAAA colored shadow looks like.

```
.boxshadow{ -moz-box-shadow:4px 4px 4px  
4px #CAAAAA; -webkit-box-shadow:4px 4px  
4px 4px #CAAAAA; box-shadow:4px 4px 4px  
4px #CAAAAA }
```

Background

The CSS property to change the background color of an element to Hex CAAAAA is called "background". The background property can be set on classes, ids or directly on the HTML element.

```
.background, #background, body{  
background:#CAAAAA }
```

If only the background color should be changed can be used:

```
.background{ background-color:#CAAAAA }
```

This example shows the color as background, it is applied via the CSS property "background".

To optimize and compress your CSS code, you can use our [online CSS compressor and optimizer](#) based on csstidy. If you want to create a linear or radial gradient as background or border, check our [CSS Gradient Generator](#).

Hey! You found this booklet interesting? Support Converting Colors with the new Membership Option!

The pro membership hides all ads, plus gives you double the colors in the color bucket, and more awesome pro features!

[Learn more, Memberships starting at \\$2.50/m!](#)

**Follow me
on Twitter!**

@ConvertingColor