

Converting Colors

Hex(CAAAB2)

Have a look what the booklet for
Hex(CAAAB2) contains.

Hex(CAAAB2)	3
<i>Conversions</i>	4
<i>Details</i>	6
<i>Harmonies</i>	11
<i>Previews</i>	23
<i>Color Blindness Simulation</i>	26
<i>CSS Examples</i>	29

Color

Hex(CAAAB2)

Conversions

Conversions Part 1

Format	Color
Hex	CAAAB2
RGB	202, 170, 178
RGB Percent	79%, 67%, 70%
CMY	0.2078, 0.3333, 0.3020
CMYK	0.00, 0.16, 0.12, 0.21
HSL	345°, 23%, 73%
HSV	345°, 16%, 79%
XYZ	46.7677, 44.5204, 48.2478
YIQ	180.4800, 16.5040, 9.2720

Conversions

Conversions Part 2

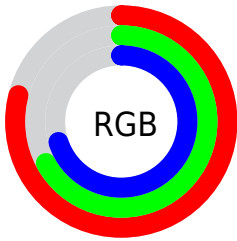
Format	Color
R _Y B	202, 170, 178
Decimal	13281970
CIE Lab	72.57, 12.95, 0.24
CIE LCh	73, 12.949, 1.058
Yxy	44.5204, 0.3352, 0.3191
Android (android.graphics.Color)	4291472050 (0xFFCAAAB2)
YUV	180.4800, -1.2226, 18.8730
Hunter-Lab	66.7236, 8.3475, 3.8339

Details

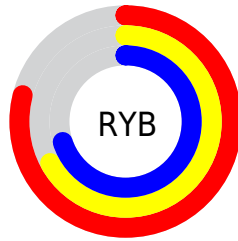
The Hex color **CAAAB2** is a light color, and the websafe version is hex **CC9999**. A complement of this color would be **AACAC2**, and the grayscale version is **B4B4B4**.

A 20% lighter version of the original color is **FFE1EA**, and **94767D** is the 20% darker color. If you saturate the color by 10%, you get **CA96A3**, and if you desaturate by 10%, it is **CABEC1**.

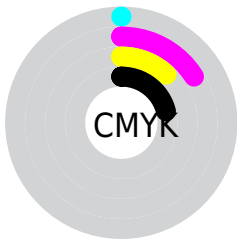
Distribution



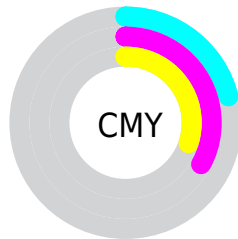
- Red (79%)
- Green (67%)
- Blue (70%)



- Red (79%)
- Yellow (67%)
- Blue (70%)



- Cyan (0%)
- Magenta (16%)
- Yellow (12%)
- Black (21%)



- Cyan (21%)
- Magenta (33%)
- Yellow (30%)

Brightness & Saturation Gradients

These gradients show how the Hex color CAAAB2 changes by changing the brightness by 10 percent. The first figure shows a shift by +10% for each color and the second figure -10%.

Similar to the brightness gradients but the following saturation gradients show a change of the Hex color CAAAB2 by changing the saturation by 10% instead.



CAAAB2



CAAAB2

FFFFFF



AE8F97



FFE1EA



94767D

FFFEFF



7A5D65



61454D



482F36



311A21



1E0009



000000



CAAAB2



CAAAB2

CA96A3

CABEC1

CA8294

CAD2D0

CA6D85

CAE7DF

CA5975

CAFBEF

CA4566

CAFFFE

CA3157

CAFFFF

CA1D48

CA0839

CA0033

Harmonies

Analogous

The Analogous color harmony consists of three colors that are next to each other on the color wheel.



C2ACBE



CAAAB2



CBABA6

Triad

The Triadic color harmony groups three colors that are evenly spaced from another and form a triangle on the color wheel.



CAAAB2



AEB59E



9AB6C6

Complementary

The Complementary color scheme is a pair of colors which are on the opposite of each other on the color wheel.



CAAAB2



AACAC2

Split Complementary

Split-complementary colors differ from the complementary color scheme. The scheme consists of three colors, the original color and two neighbors of the complement color.



94B9BE



CAAAB2



A1B8A6

Square

The Square scheme is like the rectangle color scheme, but the four colors are evenly spaced on the color wheel.



CAAAB2



BBB19B



97B9B2



A6B3C9

Rectangle

The Rectangle color scheme consists of four colors that form a rectangle on the color wheel.



CAAAB2



C8ACA0



97B9B2



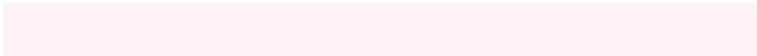
97B7C4

Sweetspot

The Sweet Spot groups the original color and five complimentary colors.



CAAAB2



FFF2F5



C2AACA



80787A



000000



808080

Same Dimension

The Same Dimension uses a secret algorithm to generate beautiful new colors.



CAAAB2



FFCFDB



CAB2AA



665C5E



A60029



26000A

Inverse Universe

The Inverse Universe completely reimagines the original color for something new.



CAAAB2



FFCFDB



AAC2CA



665C5E



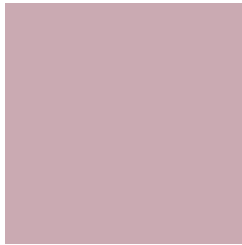
A60029



26000A

Previews

White Background



This preview shows how the Hex color CAAAB2 looks on a white background.

Color Contrast Check

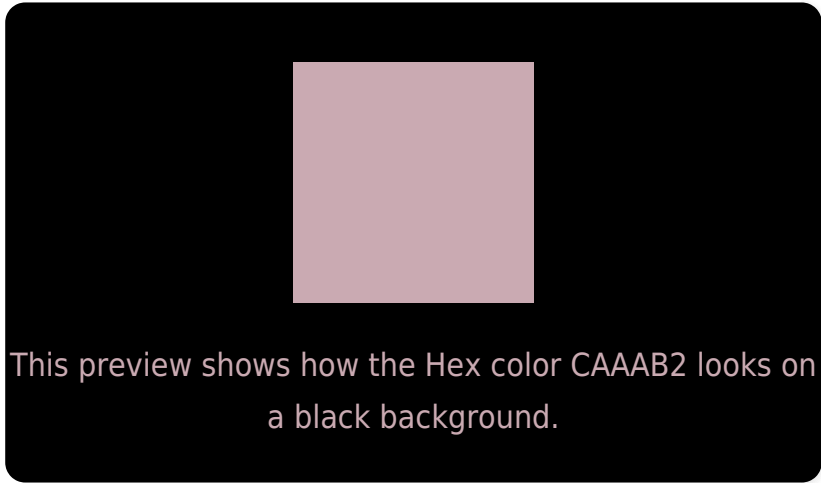
Large Text (above 18pt) WCAG AA × Fail

Any Text WCAG AA × Fail

Large Text (above 18pt) WCAG AAA × Fail

Any Text WCAG AAA × Fail

Black Background



Color Contrast Check

Large Text (above 18pt) WCAG AA ✓ Pass

Any Text WCAG AA ✓ Pass

Large Text (above 18pt) WCAG AAA ✓ Pass

Any Text WCAG AAA ✓ Pass

If you want to check with other color combinations, try the [Color Contrast Checker](#).

Hex CAAAB2 Background



This preview shows how black text looks on a background with the Hex color CAAAB2.



This preview shows how white text looks on a background with the Hex color CAAAB2.

Color Blindness Simulation

Color vision deficiency is a very complex topic, and I could not describe the different causes any better than Wikipedia does, so if you want to learn more, you should check out their [article about color blindness](#).

Dichromacy



Original Color
CAAAB2

Protanopia
B4B1B6

Deuteranopia
C4ACB2



Tritanopia
CBA9B6

Trichromacy



Original Color
CAAAB2

Protanomaly
BCAEB5

Deuteranomaly
C6ABB2

Tritanomaly
CBA9B5

Monochromacy



Original Color
CAAAB2

Achromatopsia
B4B4B4

Achromatomaly
BCB0B3

CSS Examples

Text

The CSS property to change the color of the text to Hex CAAAB2 is called "color". The color property can be set on classes, ids or directly on the HTML element.

This example shows how text in the color #CAAAB2 looks like.

```
.text, #text, p{  
    color:#CAAAB2  
}
```

If you want to add a text shadow in that color use the text-shadow property, you can generate a text shadow directly with our [CSS Text Shadow Generator](#).

Here you see how black text with a 4 pixel #CAAAB2 colored shadow looks like.

```
.shadow{ text-shadow: 4px 4px 2px #CAAAB2
}
```

Border

The CSS property to change the border of an element to Hex CAAAB2 is called "border". The border property can be set on classes, ids or directly on the HTML element.

This example shows the color as border, it can be applied via the CSS property "border" or "border-color".

```
.border, #border, table{ border:4px solid
#CAAAB2 }
```

If only the border color should be changed use the property `border-color`.

```
.border{ border-color:#CAAAB2 }
```

If you want to add a box shadow in that color use:

Here you see how a box with a 4 pixel #CAAAB2 colored shadow looks like.

```
.boxshadow{ -moz-box-shadow:4px 4px 4px  
4px #CAAAB2; -webkit-box-shadow:4px 4px  
4px 4px #CAAAB2; box-shadow:4px 4px 4px  
4px #CAAAB2 }
```

Background

The CSS property to change the background color of an element to Hex CAAAB2 is called "background". The background property can be set on classes, ids or directly on the HTML element.

```
.background, #background, body{  
background:#CAAAB2 }
```

If only the background color should be changed can be used:

```
.background{ background-color:#CAAAB2 }
```

This example shows the color as background, it is applied via the CSS property "background".

To optimize and compress your CSS code, you can use our [online CSS compressor and optimizer](#) based on csstidy. If you want to create a linear or radial gradient as background or border, check our [CSS Gradient Generator](#).

Hey! You found this booklet interesting? Support Converting Colors with the new Membership Option!

The pro membership hides all ads, plus gives you double the colors in the color bucket, and more awesome pro features!

[Learn more, Memberships starting at \\$2.50/m!](#)

**Follow me
on Twitter!**

@ConvertingColor