

Converting Colors

Hex(CAACA3)

Have a look what the booklet for
Hex(CAACCA3) contains.

Hex(CAACCA3)	3
<i>Conversions</i>	4
<i>Details</i>	6
<i>Harmonies</i>	11
<i>Previews</i>	23
<i>Color Blindness Simulation</i>	26
<i>CSS Examples</i>	29

Color

Hex(CAACA3)

Conversions

Conversions Part 1

Format	Color
Hex	CAACA3
RGB	202, 172, 163
RGB Percent	79%, 67%, 64%
CMY	0.2078, 0.3255, 0.3608
CMYK	0.00, 0.15, 0.19, 0.21
HSL	14°, 27%, 72%
HSV	14°, 19%, 79%
XYZ	45.7205, 44.7059, 40.8697
YIQ	179.9440, 20.7690, 3.5610

Conversions

Conversions Part 2

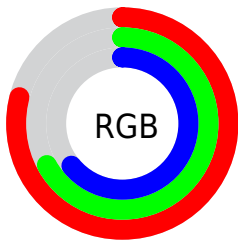
Format	Color
R _Y B	202, 175, 163
Decimal	13282467
CIE Lab	72.70, 9.45, 8.66
CIE LCh	73, 12.815, 42.497
Yxy	44.7059, 0.3482, 0.3405
Android (android.graphics.Color)	4291472547 (0xFFCAACA3)
YUV	179.9440, -8.3534, 19.3431
Hunter-Lab	66.8625, 5.0487, 10.5627

Details

The Hex color **CAACA3** is a light color, and the websafe version is hex **CC9999**. A complement of this color would be **A3C1CA**, and the grayscale version is **B4B4B4**.

A 20% lighter version of the original color is **FFE3DA**, and **93786F** is the 20% darker color. If you saturate the color by 10%, you get **CA9C8F**, and if you desaturate by 10%, it is **CABCB7**.

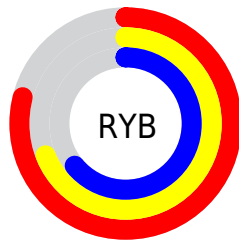
Distribution



Red (79%)

Green (67%)

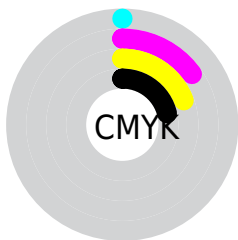
Blue (64%)



Red (79%)

Yellow (69%)

Blue (64%)

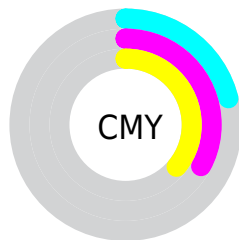


Cyan (0%)

Magenta (15%)

Yellow (19%)

Black (21%)



Cyan (21%)

Magenta (33%)

Yellow (36%)

Brightness & Saturation Gradients

These gradients show how the Hex color CAACA3 changes by changing the brightness by 10 percent. The first figure shows a shift by +10% for each color and the second figure -10%.

Similar to the brightness gradients but the following saturation gradients show a change of the Hex color CAACA3 by changing the saturation by 10% instead.

CAACA3

CAACA3

FFFFFF

AE9189

FFE3DA

93786F

FFFFF6

795F57

604740

48312A

311C15

1D0200

000000

CAACA3

CAACA3

■ CA9C8F

■ CABCB7

■ CA8D7B

■ CACBCB

■ CA7D66

■ CADBE0

■ CA6E52

■ CAEAF4

■ CA5E3E

■ CAFAFF

■ CA4F2A

■ CAFFFF

■ CA3F16

■ CA3001

■ CA2F00

Harmonies

Analogous

The Analogous color harmony consists of three colors that are next to each other on the color wheel.



CBAAAE



CAACA3



C3AF9C

Triad

The Triadic color harmony groups three colors that are evenly spaced from another and form a triangle on the color wheel.



CAACA3



9DB9AB



ACB2C9

Complementary

The Complementary color scheme is a pair of colors which are on the opposite of each other on the color wheel.



CAACA3



A3C1CA

Split Complementary

Split-complementary colors differ from the complementary color scheme. The scheme consists of three colors, the original color and two neighbors of the complement color.



9EB5C8



CAACA3



96B9B7

Square

The Square scheme is like the rectangle color scheme, but the four colors are evenly spaced on the color wheel.



CAACA3



A9B7A1



96B8C2



BBAEC4

Rectangle

The Rectangle color scheme consists of four colors that form a rectangle on the color wheel.



CAACA3



BBB29B



96B8C2



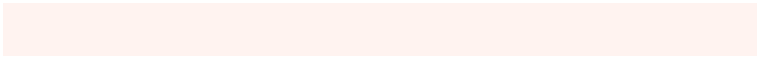
A7B3CA

Sweetspot

The Sweet Spot groups the original color and five complimentary colors.



CAACA3



FFF3F0



CAA3C2



807977



000000



808080

Same Dimension

The Same Dimension uses a secret algorithm to generate beautiful new colors.



CAACA3



FFD2C4



CABFA3



665E5C



A62600



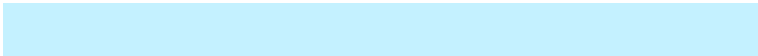
260900

Inverse Universe

The Inverse Universe completely reimagines the original color for something new.



A3C1CA



C4F1FF



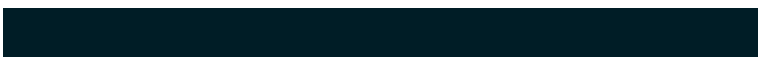
A3AECA



5C6466



007FA6



001D26

Previews

White Background



This preview shows how the Hex color CAACA3 looks on a white background.

Color Contrast Check

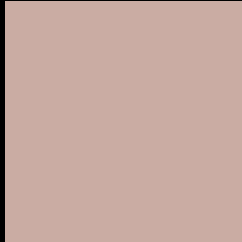
Large Text (above 18pt) WCAG AA × Fail

Any Text WCAG AA × Fail

Large Text (above 18pt) WCAG AAA × Fail

Any Text WCAG AAA × Fail

Black Background



This preview shows how the Hex color CAACA3 looks on a black background.

Color Contrast Check

Large Text (above 18pt) WCAG AA ✓ Pass

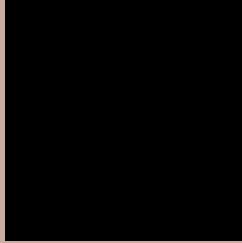
Any Text WCAG AA ✓ Pass

Large Text (above 18pt) WCAG AAA ✓ Pass

Any Text WCAG AAA ✓ Pass

If you want to check with other color combinations, try the [Color Contrast Checker](#).

Hex CAACA3 Background



This preview shows how black text looks on a background with the Hex color CAACA3.

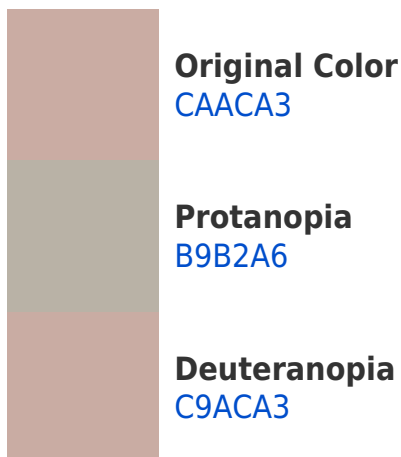


This preview shows how white text looks on a background with the Hex color CAACA3.

Color Blindness Simulation

Color vision deficiency is a very complex topic, and I could not describe the different causes any better than Wikipedia does, so if you want to learn more, you should check out their [article about color blindness](#).

Dichromacy





Tritanopia
CCA9B6

Trichromacy



Original Color
CAACA3

Protanomaly
BFB0A5

Deuteranomaly
C9ACA3

Tritanomaly
CBAAAF

Monochromacy



Original Color
CAACA3

Achromatopsia
B4B4B4

Achromatomaly
BCB1AE

CSS Examples

Text

The CSS property to change the color of the text to Hex CAACA3 is called "color". The color property can be set on classes, ids or directly on the HTML element.

This example shows how text in the color #CAACA3 looks like.

```
.text, #text, p{  
    color:#CAACA3  
}
```

If you want to add a text shadow in that color use the text-shadow property, you can generate a text shadow directly with our [CSS Text Shadow Generator](#).

Here you see how black text with a 4 pixel #CAACA3 colored shadow looks like.

```
.shadow{ text-shadow: 4px 4px 2px #CAACA3  
}
```

Border

The CSS property to change the border of an element to Hex CAACA3 is called "border". The border property can be set on classes, ids or directly on the HTML element.

This example shows the color as border, it can be applied via the CSS property "border" or "border-color".

```
.border, #border, table{ border:4px solid  
#CAACA3 }
```

If only the border color should be changed use the property `border-color`.

```
.border{ border-color:#CAACA3 }
```

If you want to add a box shadow in that color use:

Here you see how a box with a 4 pixel #CAACA3 colored shadow looks like.

```
.boxshadow{ -moz-box-shadow:4px 4px 4px  
4px #CAACA3; -webkit-box-shadow:4px 4px  
4px 4px #CAACA3; box-shadow:4px 4px 4px  
4px #CAACA3 }
```

Background

The CSS property to change the background color of an element to Hex CAACA3 is called "background". The background property can be set on classes, ids or directly on the HTML element.

```
.background, #background, body{  
background:#CAACA3 }
```

If only the background color should be changed can be used:

```
.background{ background-color:#CAACA3 }
```

This example shows the color as background, it is applied via the CSS property "background".

To optimize and compress your CSS code, you can use our [online CSS compressor and optimizer](#) based on csstidy. If you want to create a linear or radial gradient as background or border, check our [CSS Gradient Generator](#).

Hey! You found this booklet interesting? Support Converting Colors with the new Membership Option!

The pro membership hides all ads, plus gives you double the colors in the color bucket, and more awesome pro features!

[Learn more, Memberships starting at \\$2.50/m!](#)

**Follow me
on Twitter!**

@ConvertingColor