

Converting Colors

Hex(CAAE8E)

Have a look what the booklet for
Hex(CAAE8E) contains.

Hex(CAAE8E)	3
<i>Conversions</i>	4
<i>Details</i>	6
<i>Harmonies</i>	11
<i>Previews</i>	23
<i>Color Blindness Simulation</i>	26
<i>CSS Examples</i>	29

Color

Hex(CAAE8E)

Conversions

Conversions Part 1

Format	Color
Hex	CAA8E8
RGB	202, 174, 142
RGB Percent	79%, 68%, 56%
CMY	0.2078, 0.3176, 0.4431
CMYK	0.00, 0.14, 0.30, 0.21
HSL	32°, 36%, 67%
HSV	32°, 30%, 79%
XYZ	44.3757, 44.7817, 31.8961
YIQ	178.7240, 26.9600, -4.0160

Conversions

Conversions Part 2

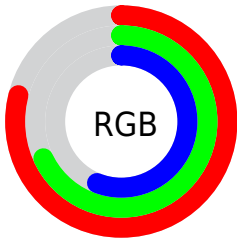
Format	Color
R_{YB}	195, 202, 142
Decimal	13282958
CIE _{Lab}	72.75, 5.35, 20.19
CIE _{LCh}	73, 20.884, 75.147
Yxy	44.7817, 0.3666, 0.3699
Android (android.graphics.Color)	4291473038 (0xFFCAA8E8E)
YUV	178.7240, -18.1049, 20.4131
Hunter-Lab	66.9191, 1.2592, 18.5836

Details

The Hex color **CAAE8E** is a light color, and the websafe version is hex **CCCC99**. A complement of this color would be **8EAACA**, and the grayscale version is **B3B3B3**.

A 20% lighter version of the original color is **FFE5C4**, and **937A5C** is the 20% darker color. If you saturate the color by 10%, you get **CAA57A**, and if you desaturate by 10%, it is **CAB7A2**.

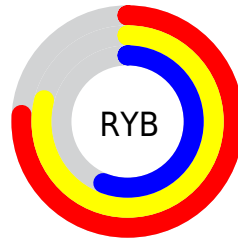
Distribution



Red (79%)

Green (68%)

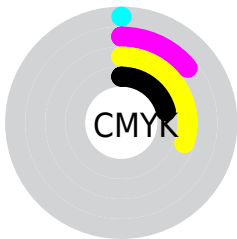
Blue (56%)



Red (76%)

Yellow (79%)

Blue (56%)

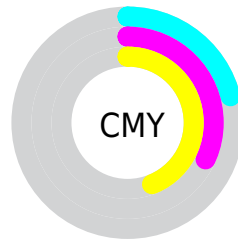


Cyan (0%)

Magenta (14%)

Yellow (30%)

Black (21%)



Cyan (21%)

Magenta (32%)

Yellow (44%)

Brightness & Saturation Gradients

These gradients show how the Hex color CAAE8E changes by changing the brightness by 10 percent. The first figure shows a shift by +10% for each color and the second figure -10%.

Similar to the brightness gradients but the following saturation gradients show a change of the Hex color CAAE8E by changing the saturation by 10% instead.



CAAE8E



CAAE8E

FFFFFF



AE9374



FFE5C4



937A5C



FFFFE0



796144



FFFFFC



5F492D



463318



301E00



180500



000000



CAAE8E



CAAE8E

CAA57A

CAB7A2

CA9B66

CAC1B6

CA9251

CACACB

CA883D

CAD4DF

CA7F29

CADDF3

CA7515

CAE7FF

CA6C01

CAF0FF

CA6C00

CAF9FF

CAFFFF

Harmonies

Analogous

The Analogous color harmony consists of three colors that are next to each other on the color wheel.



D7A898



CAAE8E



B7B48E

Triad

The Triadic color harmony groups three colors that are evenly spaced from another and form a triangle on the color wheel.



CAA8E



80BEC



C2ACE

Complementary

The Complementary color scheme is a pair of colors which are on the opposite of each other on the color wheel.



CAA8E



8EAACA

Split Complementary

Split-complementary colors differ from the complementary color scheme. The scheme consists of three colors, the original color and two neighbors of the complement color.



A9B1D7



CAA8E



80BCCD

Square

The Square scheme is like the rectangle color scheme, but the four colors are evenly spaced on the color wheel.



CAA8E



8DBDA8



91B7D7



D3A6BD

Rectangle

The Rectangle color scheme consists of four colors that form a rectangle on the color wheel.



CAAE8E



A9B893



91B7D7



BAADD2

Sweetspot

The Sweet Spot groups the original color and five complimentary colors.



CAA8E8



FFF4E8



CA8EAA



807971



000000



808080

Same Dimension

The Same Dimension uses a secret algorithm to generate beautiful new colors.



CAA8E



FFD4A3



C8CA8E



66615C



A65800



261400

Inverse Universe

The Inverse Universe completely reimagines the original color for something new.



8EAACA



A3CEFF



908ECA



5C6166



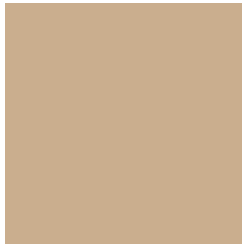
004DA6



001226

Previews

White Background



This preview shows how the Hex color CAAE8E looks on a white background.

Color Contrast Check

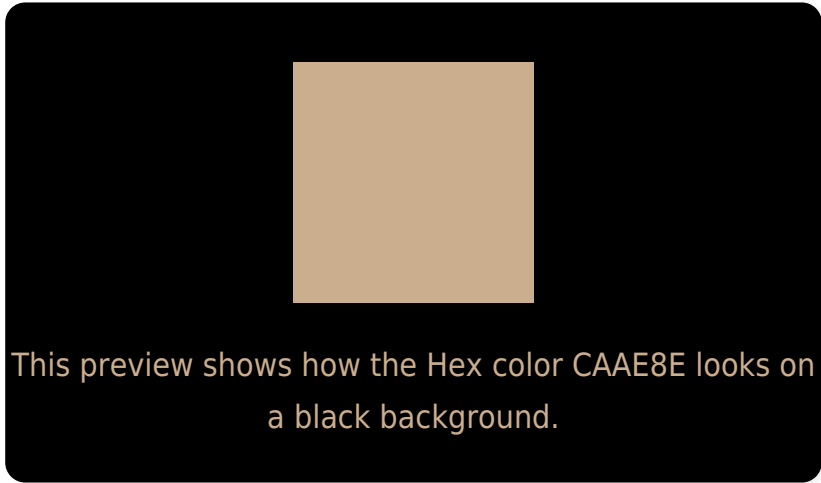
Large Text (above 18pt) WCAG AA × Fail

Any Text WCAG AA × Fail

Large Text (above 18pt) WCAG AAA × Fail

Any Text WCAG AAA × Fail

Black Background



Color Contrast Check

Large Text (above 18pt) WCAG AA ✓ Pass

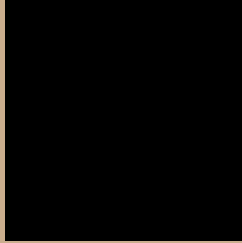
Any Text WCAG AA ✓ Pass

Large Text (above 18pt) WCAG AAA ✓ Pass

Any Text WCAG AAA ✓ Pass

If you want to check with other color combinations, try the [Color Contrast Checker](#).

Hex CAAE8E Background



This preview shows how black text looks on a background with the Hex color CAAE8E.



This preview shows how white text looks on a background with the Hex color CAAE8E.

Color Blindness Simulation

Color vision deficiency is a very complex topic, and I could not describe the different causes any better than Wikipedia does, so if you want to learn more, you should check out their [article about color blindness](#).

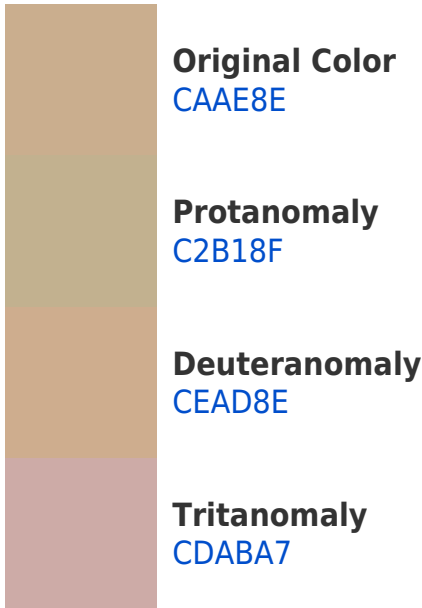
Dichromacy



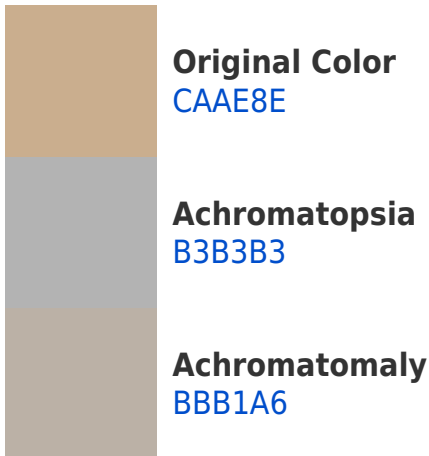


Tritanopia
CFA9B6

Trichromacy



Monochromacy



CSS Examples

Text

The CSS property to change the color of the text to Hex CAAE8E is called "color". The color property can be set on classes, ids or directly on the HTML element.

This example shows how text in the color #CAA8E8 looks like.

```
.text, #text, p{  
    color:#CAA8E8  
}
```

If you want to add a text shadow in that color use the text-shadow property, you can generate a text shadow directly with our [CSS Text Shadow Generator](#).

Here you see how black text with a 4 pixel #CAAE8E colored shadow looks like.

```
.shadow{ text-shadow: 4px 4px 2px #CAAE8E
}
```

Border

The CSS property to change the border of an element to Hex CAAE8E is called "border". The border property can be set on classes, ids or directly on the HTML element.

This example shows the color as border, it can be applied via the CSS property "border" or "border-color".

```
.border, #border, table{ border:4px solid
#CAAE8E }
```

If only the border color should be changed use the property `border-color`.

```
.border{ border-color:#CAAE8E }
```

If you want to add a box shadow in that color use:

Here you see how a box with a 4 pixel #CAAE8E colored shadow looks like.

```
.boxshadow{ -moz-box-shadow:4px 4px 4px  
4px #CAAE8E; -webkit-box-shadow:4px 4px  
4px 4px #CAAE8E; box-shadow:4px 4px 4px  
4px #CAAE8E }
```

Background

The CSS property to change the background color of an element to Hex CAAE8E is called "background". The background property can be set on classes, ids or directly on the HTML element.

```
.background, #background, body{  
background:#CAA8E8 }
```

If only the background color should be changed can be used:

```
.background{ background-color:#CAA8E8 }
```

This example shows the color as background, it is applied via the CSS property "background".

To optimize and compress your CSS code, you can use our [online CSS compressor and optimizer](#) based on csstidy. If you want to create a linear or radial gradient as background or border, check our [CSS Gradient Generator](#).

Hey! You found this booklet interesting? Support Converting Colors with the new Membership Option!

The pro membership hides all ads, plus gives you double the colors in the color bucket, and more awesome pro features!

[Learn more, Memberships starting at \\$2.50/m!](#)

**Follow me
on Twitter!**

@ConvertingColor