

Converting Colors

Hex(CAB0B0)

Have a look what the booklet for
Hex(CAB0B0) contains.

Hex(CAB0B0)	3
<i>Conversions</i>	4
<i>Details</i>	6
<i>Harmonies</i>	11
<i>Previews</i>	23
<i>Color Blindness Simulation</i>	26
<i>CSS Examples</i>	29

Color

Hex(CAB0B0)

Conversions

Conversions Part 1

Format	Color
Hex	CAB0B0
RGB	202, 176, 176
RGB Percent	79%, 69%, 69%
CMY	0.2078, 0.3098, 0.3098
CMYK	0.00, 0.13, 0.13, 0.21
HSL	0°, 20%, 74%
HSV	0°, 13%, 79%
XYZ	47.7189, 46.7418, 47.5813
YIQ	183.7740, 15.4960, 5.5120

Conversions

Conversions Part 2

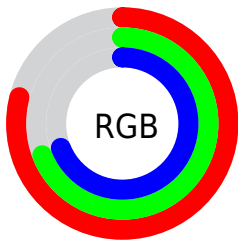
Format	Color
R _Y B	202, 176, 176
Decimal	13283504
CIE Lab	74.02, 9.36, 3.44
CIE LCh	74, 9.971, 20.202
Yxy	46.7418, 0.3359, 0.3291
Android (android.graphics.Color)	4291473584 (0xFFCAB0B0)
YUV	183.7740, -3.8326, 15.9842
Hunter-Lab	68.3680, 4.9440, 6.5942

Details

The Hex color **CAB0B0** is a light color, and the websafe version is hex **CC9999**. A complement of this color would be **B0CACA**, and the grayscale version is **B8B8B8**.

A 20% lighter version of the original color is **FFE8E8**, and **947B7C** is the 20% darker color. If you saturate the color by 10%, you get **CA9C9C**, and if you desaturate by 10%, it is **CAC4C4**.

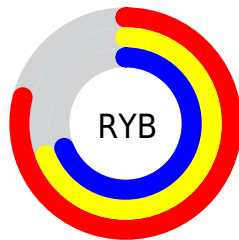
Distribution



Red (79%)

Green (69%)

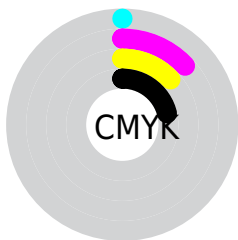
Blue (69%)



Red (79%)

Yellow (69%)

Blue (69%)

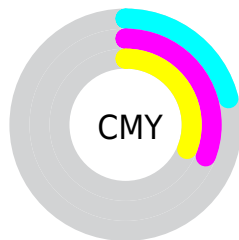


Cyan (0%)

Magenta (13%)

Yellow (13%)

Black (21%)



Cyan (21%)

Magenta (31%)

Yellow (31%)

Brightness & Saturation Gradients

These gradients show how the Hex color CAB0B0 changes by changing the brightness by 10 percent. The first figure shows a shift by +10% for each color and the second figure -10%.

Similar to the brightness gradients but the following saturation gradients show a change of the Hex color CAB0B0 by changing the saturation by 10% instead.

 CAB0B0

 CAB0B0

FFFFFF

 AE9595

 FFE8E8

 947B7C

 7A6363

 614B4B

 493434

 321F1F

 1E0707

 000000

 CAB0B0

 CAB0B0

 CA9C9C

 CAC4C4

 CA8888

 CAD8D8

 CA7373

 CAEDED

 CA5F5F

 CAFFFF

 CA4B4B

 CA3737

 CA2323

 CA0E0E

 CA0000

Harmonies

Analogous

The Analogous color harmony consists of three colors that are next to each other on the color wheel.



C7B0B9



CAB0B0



C8B2A8

Triad

The Triadic color harmony groups three colors that are evenly spaced from another and form a triangle on the color wheel.



CAB0B0



ACBAAA



A9B8C8

Complementary

The Complementary color scheme is a pair of colors which are on the opposite of each other on the color wheel.



CAB0B0



B0CACA

Split Complementary

Split-complementary colors differ from the complementary color scheme. The scheme consists of three colors, the original color and two neighbors of the complement color.



A1BAC4



CAB0B0



A4BBB3

Square

The Square scheme is like the rectangle color scheme, but the four colors are evenly spaced on the color wheel.



CAB0B0



B7B7A5



9FBBBC



B4B5C7

Rectangle

The Rectangle color scheme consists of four colors that form a rectangle on the color wheel.



CAB0B0



C3B3A5



9FBBBC



A6B9C7

Sweetspot

The Sweet Spot groups the original color and five complimentary colors.



CAB0B0



FFF5F5



CAB0CA



807979



000000



808080

Same Dimension

The Same Dimension uses a secret algorithm to generate beautiful new colors.



CAB0B0



FFD9D9



CABDB0



665C5C



A60000



260000

Inverse Universe

The Inverse Universe completely reimagines the original color for something new.



B0CACA



D9FFFF



B0BDCA



5C6666



00A6A6



002626

Previews

White Background



This preview shows how the Hex color CAB0B0 looks on a white background.

Color Contrast Check

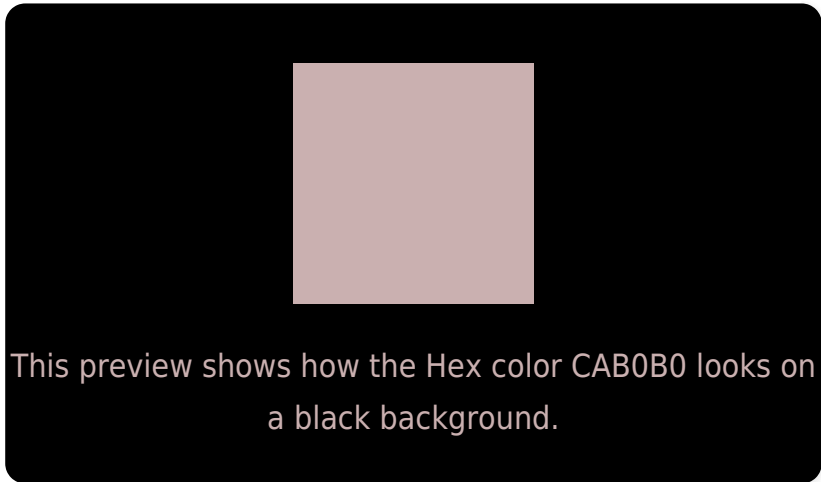
Large Text (above 18pt) WCAG AA × Fail

Any Text WCAG AA × Fail

Large Text (above 18pt) WCAG AAA × Fail

Any Text WCAG AAA × Fail

Black Background



Color Contrast Check

Large Text (above 18pt) WCAG AA ✓ Pass

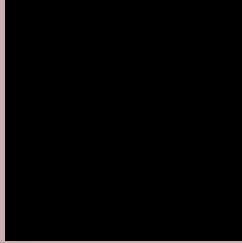
Any Text WCAG AA ✓ Pass

Large Text (above 18pt) WCAG AAA ✓ Pass

Any Text WCAG AAA ✓ Pass

If you want to check with other color combinations, try the [Color Contrast Checker](#).

Hex CAB0B0 Background



This preview shows how black text looks on a background with the Hex color CAB0B0.

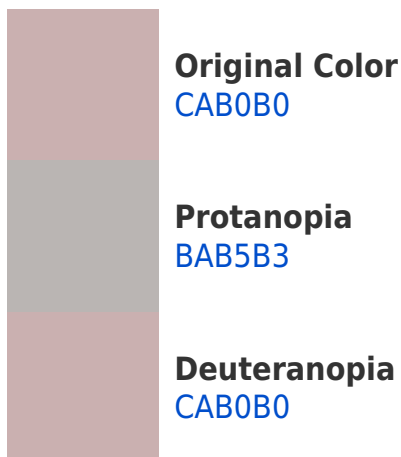


This preview shows how white text looks on a background with the Hex color CAB0B0.

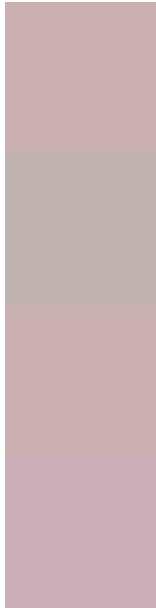
Color Blindness Simulation

Color vision deficiency is a very complex topic, and I could not describe the different causes any better than Wikipedia does, so if you want to learn more, you should check out their [article about color blindness](#).

Dichromacy



Trichromacy



Original Color
CAB0B0

Protanomaly
C0B3B2

Deuteranomaly
CAB0B0

Tritanomaly
CBAFB8

Monochromacy



Original Color
CAB0B0

Achromatopsia
B8B8B8

Achromatomaly
BFB5B5

CSS Examples

Text

The CSS property to change the color of the text to Hex CAB0B0 is called "color". The color property can be set on classes, ids or directly on the HTML element.

This example shows how text in the color #CAB0B0 looks like.

```
.text, #text, p{  
    color:#CAB0B0  
}
```

If you want to add a text shadow in that color use the text-shadow property, you can generate a text shadow directly with our [CSS Text Shadow Generator](#).

Here you see how black text with a 4 pixel #CAB0B0 colored shadow looks like.

```
.shadow{ text-shadow: 4px 4px 2px #CAB0B0
}
```

Border

The CSS property to change the border of an element to Hex CAB0B0 is called "border". The border property can be set on classes, ids or directly on the HTML element.

This example shows the color as border, it can be applied via the CSS property "border" or "border-color".

```
.border, #border, table{ border:4px solid
#CAB0B0 }
```

If only the border color should be changed use the property `border-color`.

```
.border{ border-color:#CAB0B0 }
```

If you want to add a box shadow in that color use:

Here you see how a box with a 4 pixel #CAB0B0 colored shadow looks like.

```
.boxshadow{ -moz-box-shadow:4px 4px 4px  
4px #CAB0B0; -webkit-box-shadow:4px 4px  
4px 4px #CAB0B0; box-shadow:4px 4px 4px  
4px #CAB0B0 }
```

Background

The CSS property to change the background color of an element to Hex CAB0B0 is called "background". The background property can be set on classes, ids or directly on the HTML element.

```
.background, #background, body{  
background:#CAB0B0 }
```

If only the background color should be changed can be used:

```
.background{ background-color:#CAB0B0 }
```

This example shows the color as background, it is applied via the CSS property "background".

To optimize and compress your CSS code, you can use our [online CSS compressor and optimizer](#) based on csstidy. If you want to create a linear or radial gradient as background or border, check our [CSS Gradient Generator](#).

Hey! You found this booklet interesting? Support Converting Colors with the new Membership Option!

The pro membership hides all ads, plus gives you double the colors in the color bucket, and more awesome pro features!

[Learn more, Memberships starting at \\$2.50/m!](#)

**Follow me
on Twitter!**

@ConvertingColor