

Converting Colors

Hex(CAB2BA)

Have a look what the booklet for
Hex(CAB2BA) contains.

Hex(CAB2BA)	3
<i>Conversions</i>	4
<i>Details</i>	6
<i>Harmonies</i>	11
<i>Previews</i>	23
<i>Color Blindness Simulation</i>	26
<i>CSS Examples</i>	29

Color

Hex(CAB2BA)

Conversions

Conversions Part 1

Format	Color
Hex	CAB2BA
RGB	202, 178, 186
RGB Percent	79%, 70%, 73%
CMY	0.2078, 0.3020, 0.2706
CMYK	0.00, 0.12, 0.08, 0.21
HSL	340°, 18%, 75%
HSV	340°, 12%, 79%
XYZ	49.1404, 47.9425, 53.1182
YIQ	186.0880, 11.7360, 7.5760

Conversions

Conversions Part 2

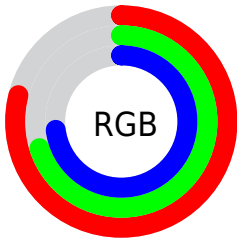
Format	Color
R_{YB}	202, 178, 186
Decimal	13284026
CIE _{Lab}	74.79, 9.97, -0.91
CIE _{LCh}	75, 10.012, 354.778
Yxy	47.9425, 0.3272, 0.3192
Android (android.graphics.Color)	4291474106 (0xFFCAB2BA)
YUV	186.0880, -0.0434, 13.9548
Hunter-Lab	69.2405, 5.5116, 2.9838

Details

The Hex color **CAB2BA** is a light color, and the websafe version is hex **CCCCCC**. A complement of this color would be **B2CAC2**, and the grayscale version is **BABABA**.

A 20% lighter version of the original color is **FFEAF2**, and **947D85** is the 20% darker color. If you saturate the color by 10%, you get **CA9EAD**, and if you desaturate by 10%, it is **CAC6C7**.

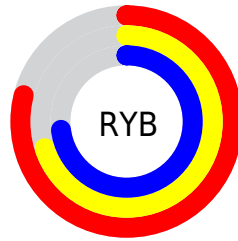
Distribution



Red (79%)

Green (70%)

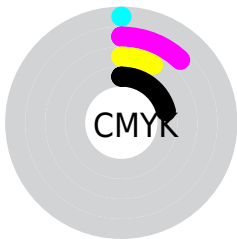
Blue (73%)



Red (79%)

Yellow (70%)

Blue (73%)

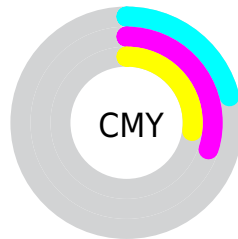


Cyan (0%)

Magenta (12%)

Yellow (8%)

Black (21%)



Cyan (21%)

Magenta (30%)

Yellow (27%)

Brightness & Saturation Gradients

These gradients show how the Hex color CAB2BA changes by changing the brightness by 10 percent. The first figure shows a shift by +10% for each color and the second figure -10%.

Similar to the brightness gradients but the following saturation gradients show a change of the Hex color CAB2BA by changing the saturation by 10% instead.

 CAB2BA

FFFFFF

 FFEAF2

 CAB2BA

 AF979F

 947D85

 7A646C

 614C54

 49363C

 322027

 1E0A12

 000000

 CAB2BA

 CAB2BA

CA9EAD

CAC6C7

CA8A9F

CADAD5

CA7592

CAEFE2

CA6184

CAFFF0

CA4D77

CAFFFD

CA3969

CAFFFF

CA255C

CA104E

CA0043

Harmonies

Analogous

The Analogous color harmony consists of three colors that are next to each other on the color wheel.



C3B4C3



CAB2BA



CCB2B1

Triad

The Triadic color harmony groups three colors that are evenly spaced from another and form a triangle on the color wheel.



CAB2BA



B7BAA7



A4BCC7

Complementary

The Complementary color scheme is a pair of colors which are on the opposite of each other on the color wheel.



CAB2BA



B2CAC2

Split Complementary

Split-complementary colors differ from the complementary color scheme. The scheme consists of three colors, the original color and two neighbors of the complement color.



A1BDBF



CAB2BA



ADBCAD

Square

The Square scheme is like the rectangle color scheme, but the four colors are evenly spaced on the color wheel.



CAB2BA



C2B7A6



A5BEB6



ADB9CA

Rectangle

The Rectangle color scheme consists of four colors that form a rectangle on the color wheel.



CAB2BA



CBB3AB



A5BEB6



A2BDC5

Sweetspot

The Sweet Spot groups the original color and five complimentary colors.



CAB2BA



FFF5F8



C2B2CA



80797B



000000



808080

Same Dimension

The Same Dimension uses a secret algorithm to generate beautiful new colors.



CAB2BA



FFDBE7



CAB6B2



665C5F



A60037



26000D

Inverse Universe

The Inverse Universe completely reimagines the original color for something new.



CAB2BA



FFDBE7



B2C6CA



665C5F



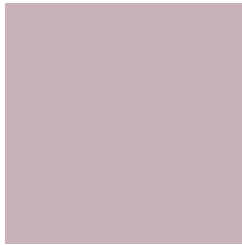
A60037



26000D

Previews

White Background



This preview shows how the Hex color CAB2BA looks on a white background.

Color Contrast Check

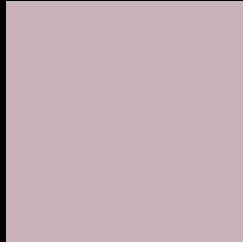
Large Text (above 18pt) WCAG AA × Fail

Any Text WCAG AA × Fail

Large Text (above 18pt) WCAG AAA × Fail

Any Text WCAG AAA × Fail

Black Background



This preview shows how the Hex color CAB2BA looks on a black background.

Color Contrast Check

Large Text (above 18pt) WCAG AA ✓ Pass

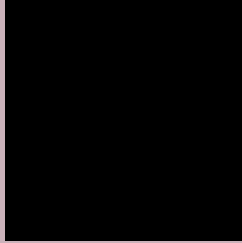
Any Text WCAG AA ✓ Pass

Large Text (above 18pt) WCAG AAA ✓ Pass

Any Text WCAG AAA ✓ Pass

If you want to check with other color combinations, try the [Color Contrast Checker](#).

Hex CAB2BA Background



This preview shows how black text looks on a background with the Hex color CAB2BA.

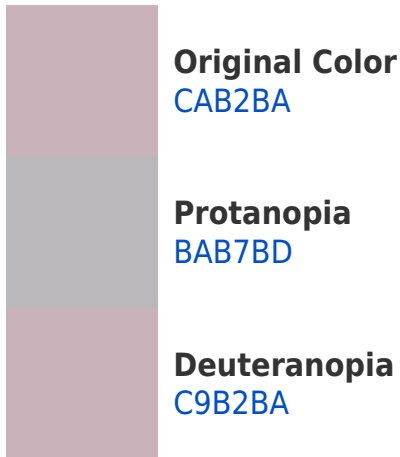


This preview shows how white text looks on a background with the Hex color CAB2BA.

Color Blindness Simulation

Color vision deficiency is a very complex topic, and I could not describe the different causes any better than Wikipedia does, so if you want to learn more, you should check out their [article about color blindness](#).

Dichromacy



Trichromacy



Original Color
CAB2BA

Protanomaly
C0B5BC

Deuteranomaly
C9B2BA

Tritanomaly
CBB1BD

Monochromacy



Original Color
CAB2BA

Achromatopsia
BABABA

Achromatomaly
C0B7BA

CSS Examples

Text

The CSS property to change the color of the text to Hex CAB2BA is called "color". The color property can be set on classes, ids or directly on the HTML element.

This example shows how text in the color #CAB2BA looks like.

```
.text, #text, p{  
    color:#CAB2BA  
}
```

If you want to add a text shadow in that color use the text-shadow property, you can generate a text shadow directly with our [CSS Text Shadow Generator](#).

Here you see how black text with a 4 pixel #CAB2BA colored shadow looks like.

```
.shadow{ text-shadow: 4px 4px 2px #CAB2BA
}
```

Border

The CSS property to change the border of an element to Hex CAB2BA is called "border". The border property can be set on classes, ids or directly on the HTML element.

This example shows the color as border, it can be applied via the CSS property "border" or "border-color".

```
.border, #border, table{ border:4px solid
#CAB2BA }
```

If only the border color should be changed use the property `border-color`.

```
.border{ border-color:#CAB2BA }
```

If you want to add a box shadow in that color use:

Here you see how a box with a 4 pixel #CAB2BA colored shadow looks like.

```
.boxshadow{ -moz-box-shadow:4px 4px 4px  
4px #CAB2BA; -webkit-box-shadow:4px 4px  
4px 4px #CAB2BA; box-shadow:4px 4px 4px  
4px #CAB2BA }
```

Background

The CSS property to change the background color of an element to Hex CAB2BA is called "background". The background property can be set on classes, ids or directly on the HTML element.

```
.background, #background, body{  
background:#CAB2BA }
```

If only the background color should be changed can be used:

```
.background{ background-color:#CAB2BA }
```

This example shows the color as background, it is applied via the CSS property "background".

To optimize and compress your CSS code, you can use our [online CSS compressor and optimizer](#) based on csstidy. If you want to create a linear or radial gradient as background or border, check our [CSS Gradient Generator](#).

Hey! You found this booklet interesting? Support Converting Colors with the new Membership Option!

The pro membership hides all ads, plus gives you double the colors in the color bucket, and more awesome pro features!

[Learn more, Memberships starting at \\$2.50/m!](#)

**Follow me
on Twitter!**

@ConvertingColor