

Converting Colors

Hex(CAB6B1)

Have a look what the booklet for
Hex(CAB6B1) contains.

Hex(CAB6B1)	3
<i>Conversions</i>	4
<i>Details</i>	6
<i>Harmonies</i>	11
<i>Previews</i>	23
<i>Color Blindness Simulation</i>	26
<i>CSS Examples</i>	29

Color

Hex(CAB6B1)

Conversions

Conversions Part 1

Format	Color
Hex	CAB6B1
RGB	202, 182, 177
RGB Percent	79%, 71%, 69%
CMY	0.2078, 0.2863, 0.3059
CMYK	0.00, 0.10, 0.12, 0.21
HSL	12°, 19%, 74%
HSV	12°, 12%, 79%
XYZ	49.0209, 49.1868, 48.5053
YIQ	187.4100, 13.5250, 2.6850

Conversions

Conversions Part 2

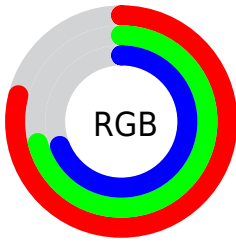
Format	Color
RYB	202, 183, 177
Decimal	13285041
CIELab	75.57, 6.29, 5.13
CIElCh	76, 8.114, 39.195
Yxy	49.1868, 0.3341, 0.3353
Android (android.graphics.Color)	4291475121 (0xFFCAB6B1)
YUV	187.4100, -5.1321, 12.7954
Hunter-Lab	70.1333, 2.0324, 8.0874

Details

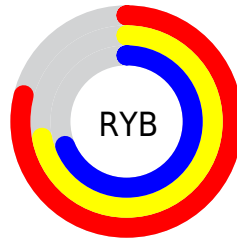
The Hex color **CAB6B1** is a light color, and the websafe version is hex **CCCCCC**. A complement of this color would be **B1C5CA**, and the grayscale version is **BBBBBB**.

A 20% lighter version of the original color is **FFEEE9**, and **94817C** is the 20% darker color. If you saturate the color by 10%, you get **CAA69D**, and if you desaturate by 10%, it is **CAC6C5**.

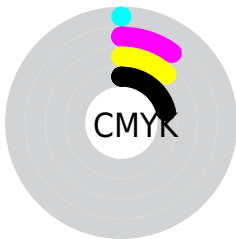
Distribution



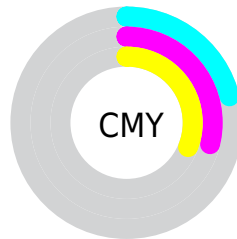
- Red (79%)
- Green (71%)
- Blue (69%)



- Red (79%)
- Yellow (72%)
- Blue (69%)



- Cyan (0%)
- Magenta (10%)
- Yellow (12%)
- Black (21%)



- Cyan (21%)
- Magenta (29%)
- Yellow (31%)

Brightness & Saturation Gradients

These gradients show how the Hex color CAB6B1 changes by changing the brightness by 10 percent. The first figure shows a shift by +10% for each color and the second figure -10%.

Similar to the brightness gradients but the following saturation gradients show a change of the Hex color CAB6B1 by changing the saturation by 10% instead.

 CAB6B1

 CAB6B1

FFFFFF

 AF9B96

 FFEEE9

 94817C

 7A6864

 61504C

 493935

 322420

 1E0E08

 000000

 CAB6B1

 CAB6B1

CAA69D

CAC6C5

CA9689

CAD6D9

CA8674

CAE6EE

CA7560

CAF7FF

CA654C

CAFFFF

CA5538

CA4524

CA350F

CA2800

Harmonies

Analogous

The Analogous color harmony consists of three colors that are next to each other on the color wheel.



CAB5B8



CAB6B1



C6B8AC

Triad

The Triadic color harmony groups three colors that are evenly spaced from another and form a triangle on the color wheel.



CAB6B1



ADBEB5



B5BAC9

Complementary

The Complementary color scheme is a pair of colors which are on the opposite of each other on the color wheel.



CAB6B1



B1C5CA

Split Complementary

Split-complementary colors differ from the complementary color scheme. The scheme consists of three colors, the original color and two neighbors of the complement color.



ADBCC8



CAB6B1



A9BFBC

Square

The Square scheme is like the rectangle color scheme, but the four colors are evenly spaced on the color wheel.



CAB6B1



B5BDAE



A8BEC3



BFB8C6

Rectangle

The Rectangle color scheme consists of four colors that form a rectangle on the color wheel.



CAB6B1



C1BAAB



A8BEC3



B2BBC9

Sweetspot

The Sweet Spot groups the original color and five complimentary colors.



CAB6B1



FFF7F5



CAB1C5



807A79



000000



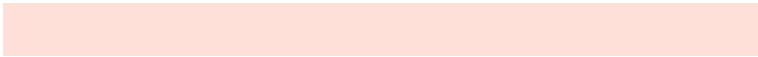
808080

Same Dimension

The Same Dimension uses a secret algorithm to generate beautiful new colors.



CAB6B1



FFE0D9



CAC3B1



665E5C



A62100



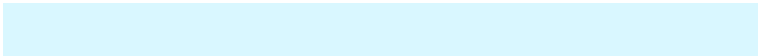
260800

Inverse Universe

The Inverse Universe completely reimagines the original color for something new.



B1C5CA



D9F7FF



B1B9CA



5C6466



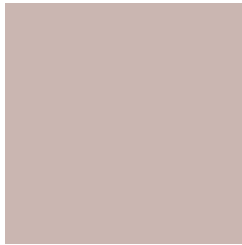
0085A6



001F26

Previews

White Background



This preview shows how the Hex color CAB6B1 looks on a white background.

Color Contrast Check

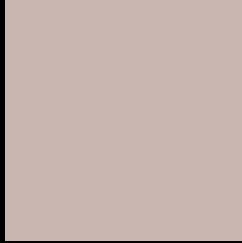
Large Text (above 18pt) WCAG AA × Fail

Any Text WCAG AA × Fail

Large Text (above 18pt) WCAG AAA × Fail

Any Text WCAG AAA × Fail

Black Background



This preview shows how the Hex color CAB6B1 looks on a black background.

Color Contrast Check

Large Text (above 18pt) WCAG AA ✓ Pass

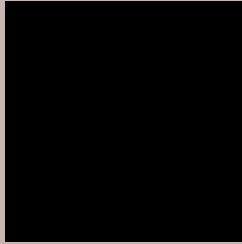
Any Text WCAG AA ✓ Pass

Large Text (above 18pt) WCAG AAA ✓ Pass

Any Text WCAG AAA ✓ Pass

If you want to check with other color combinations, try the [Color Contrast Checker](#).

Hex CAB6B1 Background



This preview shows how black text looks on a background with the Hex color CAB6B1.



This preview shows how white text looks on a background with the Hex color CAB6B1.

Color Blindness Simulation

Color vision deficiency is a very complex topic, and I could not describe the different causes any better than Wikipedia does, so if you want to learn more, you should check out their [article about color blindness](#).

Dichromacy



Trichromacy



Original Color
CAB6B1

Protanomaly
C3B8B2

Deuteranomaly
CEB5B1

Tritanomaly
CBB4BC

Monochromacy



Original Color
CAB6B1

Achromatopsia
BBBBBB

Achromatomaly
C0B9B7

CSS Examples

Text

The CSS property to change the color of the text to Hex CAB6B1 is called "color". The color property can be set on classes, ids or directly on the HTML element.

This example shows how text in the color #CAB6B1 looks like.

```
.text, #text, p{  
    color:#CAB6B1  
}
```

If you want to add a text shadow in that color use the text-shadow property, you can generate a text shadow directly with our [CSS Text Shadow Generator](#).

Here you see how black text with a 4 pixel #CAB6B1 colored shadow looks like.

```
.shadow{ text-shadow: 4px 4px 2px #CAB6B1
}
```

Border

The CSS property to change the border of an element to Hex CAB6B1 is called "border". The border property can be set on classes, ids or directly on the HTML element.

This example shows the color as border, it can be applied via the CSS property "border" or "border-color".

```
.border, #border, table{ border:4px solid
#CAB6B1 }
```

If only the border color should be changed use the property `border-color`.

```
.border{ border-color:#CAB6B1 }
```

If you want to add a box shadow in that color use:

Here you see how a box with a 4 pixel #CAB6B1 colored shadow looks like.

```
.boxshadow{ -moz-box-shadow:4px 4px 4px  
4px #CAB6B1; -webkit-box-shadow:4px 4px  
4px 4px #CAB6B1; box-shadow:4px 4px 4px  
4px #CAB6B1 }
```

Background

The CSS property to change the background color of an element to Hex CAB6B1 is called "background". The background property can be set on classes, ids or directly on the HTML element.

```
.background, #background, body{  
background:#CAB6B1 }
```

If only the background color should be changed can be used:

```
.background{ background-color:#CAB6B1 }
```

This example shows the color as background, it is applied via the CSS property "background".

To optimize and compress your CSS code, you can use our [online CSS compressor and optimizer](#) based on csstidy. If you want to create a linear or radial gradient as background or border, check our [CSS Gradient Generator](#).

Hey! You found this booklet interesting? Support Converting Colors with the new Membership Option!

The pro membership hides all ads, plus gives you double the colors in the color bucket, and more awesome pro features!

[Learn more, Memberships starting at \\$2.50/m!](#)

**Follow me
on Twitter!**

@ConvertingColor