

Converting Colors

Hex(CAB8C3)

Have a look what the booklet for
Hex(CAB8C3) contains.

Hex(CAB8C3)	3
<i>Conversions</i>	4
<i>Details</i>	6
<i>Harmonies</i>	11
<i>Previews</i>	23
<i>Color Blindness Simulation</i>	26
<i>CSS Examples</i>	29

Color

Hex(CAB8C3)

Conversions

Conversions Part 1

Format	Color
Hex	CAB8C3
RGB	202, 184, 195
RGB Percent	79%, 72%, 76%
CMY	0.2078, 0.2784, 0.2353
CMYK	0.00, 0.09, 0.03, 0.21
HSL	323°, 15%, 76%
HSV	323°, 9%, 79%
XYZ	51.3479, 50.7777, 58.7245
YIQ	190.6360, 7.1970, 7.2370

Conversions

Conversions Part 2

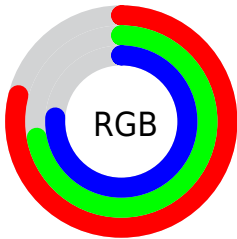
Format	Color
R _Y B	202, 184, 195
Decimal	13285571
CIE Lab	76.54, 8.33, -3.24
CIE LCh	77, 8.933, 338.738
Yxy	50.7777, 0.3192, 0.3157
Android (android.graphics.Color)	4291475651 (0xFFCAB8C3)
YUV	190.6360, 2.1515, 9.9662
Hunter-Lab	71.2584, 3.9226, 1.0197

Details

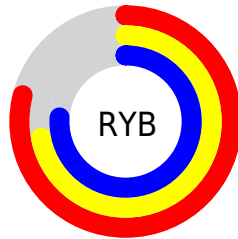
The Hex color **CAB8C3** is a light color, and the websafe version is hex **CCCCCC**. A complement of this color would be **B8CABF**, and the grayscale version is **BFBFBF**.

A 20% lighter version of the original color is **FFF0FC**, and **94838D** is the 20% darker color. If you saturate the color by 10%, you get **CAA4BB**, and if you desaturate by 10%, it is **CACCCB**.

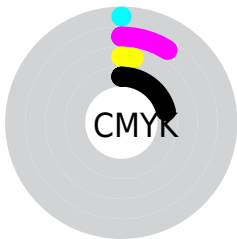
Distribution



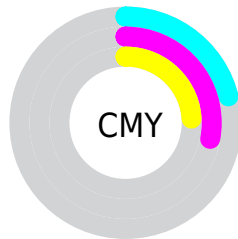
- Red (79%)
- Green (72%)
- Blue (76%)



- Red (79%)
- Yellow (72%)
- Blue (76%)



- Cyan (0%)
- Magenta (9%)
- Yellow (3%)
- Black (21%)



- Cyan (21%)
- Magenta (28%)
- Yellow (24%)

Brightness & Saturation Gradients

These gradients show how the Hex color CAB8C3 changes by changing the brightness by 10 percent. The first figure shows a shift by +10% for each color and the second figure -10%.

Similar to the brightness gradients but the following saturation gradients show a change of the Hex color CAB8C3 by changing the saturation by 10% instead.



CAB8C3



CAB8C3

FFFFFF



AF9DA8



FFF0FC



94838D



7A6A74



61525B



493B44



33252E



1E1019



000000



CAB8C3



CAB8C3

CAA4BB

CACCCB

CA90B3

CAE0D3

CA7BAB

CAF5DB

CA67A4

CAFFE2

CA539C

CAFFEA

CA3F94

CAFFF2

CA2B8C

CAFFFA

CA1684

CAFFFF

CA027C

Harmonies

Analogous

The Analogous color harmony consists of three colors that are next to each other on the color wheel.



C2BACA



CAB8C3



CFB7BB

Triad

The Triadic color harmony groups three colors that are evenly spaced from another and form a triangle on the color wheel.



CAB8C3



C1BDAD



A9C1C7

Complementary

The Complementary color scheme is a pair of colors which are on the opposite of each other on the color wheel.



CAB8C3



B8CABF

Split Complementary

Split-complementary colors differ from the complementary color scheme. The scheme consists of three colors, the original color and two neighbors of the complement color.



A9C2BF



CAB8C3



B8C0B0

Square

The Square scheme is like the rectangle color scheme, but the four colors are evenly spaced on the color wheel.



CAB8C3



C9BAAE



AFC1B7



AEBFCC

Rectangle

The Rectangle color scheme consists of four colors that form a rectangle on the color wheel.



CAB8C3



CFB8B5



AFC1B7



A9C2C4

Sweetspot

The Sweet Spot groups the original color and five complimentary colors.



CAB8C3



FFF7FC



BFB8CA



807A7E



000000



808080

Same Dimension

The Same Dimension uses a secret algorithm to generate beautiful new colors.



CAB8C3



FFE3F4



CAB8BA



665C62



A60065



260017

Inverse Universe

The Inverse Universe completely reimagines the original color for something new.



CAB8C3



FFE3F4



B8CAC8



665C62



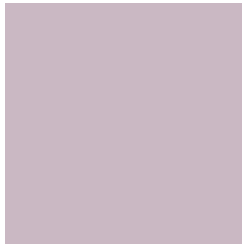
A60065



260017

Previews

White Background



This preview shows how the Hex color CAB8C3 looks on a white background.

Color Contrast Check

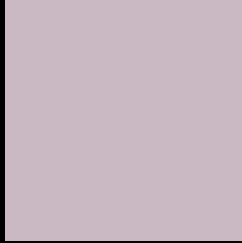
Large Text (above 18pt) WCAG AA × Fail

Any Text WCAG AA × Fail

Large Text (above 18pt) WCAG AAA × Fail

Any Text WCAG AAA × Fail

Black Background



This preview shows how the Hex color CAB8C3 looks on a black background.

Color Contrast Check

Large Text (above 18pt) WCAG AA ✓ Pass

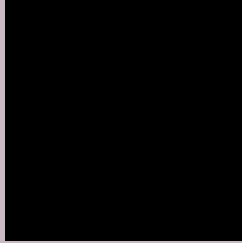
Any Text WCAG AA ✓ Pass

Large Text (above 18pt) WCAG AAA ✓ Pass

Any Text WCAG AAA ✓ Pass

If you want to check with other color combinations, try the [Color Contrast Checker](#).

Hex CAB8C3 Background



This preview shows how black text looks on a background with the Hex color CAB8C3.

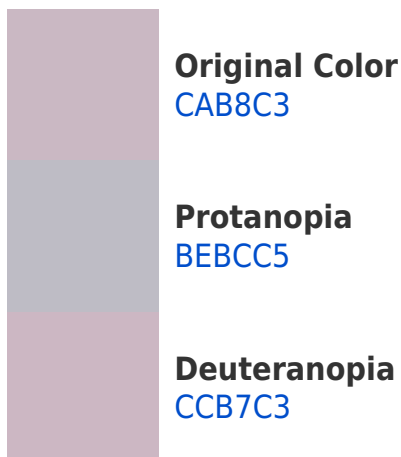


This preview shows how white text looks on a background with the Hex color CAB8C3.

Color Blindness Simulation

Color vision deficiency is a very complex topic, and I could not describe the different causes any better than Wikipedia does, so if you want to learn more, you should check out their [article about color blindness](#).

Dichromacy





Tritanopia
CAB8C6

Trichromacy



Original Color
CAB8C3

Protanomaly
C2BBC4

Deuteranomaly
CBB7C3

Tritanomaly
CAB8C5

Monochromacy



Original Color
CAB8C3

Achromatopsia
BFBFBF

Achromatomaly
C3BCC0

CSS Examples

Text

The CSS property to change the color of the text to Hex CAB8C3 is called "color". The color property can be set on classes, ids or directly on the HTML element.

This example shows how text in the color #CAB8C3 looks like.

```
.text, #text, p{  
    color:#CAB8C3  
}
```

If you want to add a text shadow in that color use the text-shadow property, you can generate a text shadow directly with our [CSS Text Shadow Generator](#).

Here you see how black text with a 4 pixel #CAB8C3 colored shadow looks like.

```
.shadow{ text-shadow: 4px 4px 2px #CAB8C3  
}
```

Border

The CSS property to change the border of an element to Hex CAB8C3 is called "border". The border property can be set on classes, ids or directly on the HTML element.

This example shows the color as border, it can be applied via the CSS property "border" or "border-color".

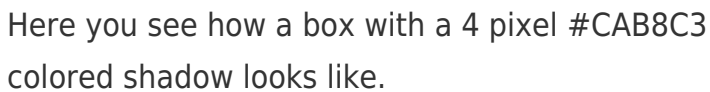
```
.border, #border, table{ border:4px solid  
#CAB8C3 }
```

If only the border color should be changed use the property `border-color`.

```
.border{ border-color:#CAB8C3 }
```

If you want to add a box shadow in that color use:

Here you see how a box with a 4 pixel #CAB8C3 colored shadow looks like.



```
.boxshadow{ -moz-box-shadow:4px 4px 4px  
4px #CAB8C3; -webkit-box-shadow:4px 4px  
4px 4px #CAB8C3; box-shadow:4px 4px 4px  
4px #CAB8C3 }
```

Background

The CSS property to change the background color of an element to Hex CAB8C3 is called "background". The background property can be set on classes, ids or directly on the HTML element.

```
.background, #background, body{  
background:#CAB8C3 }
```

If only the background color should be changed can be used:

```
.background{ background-color:#CAB8C3 }
```

This example shows the color as background, it is applied via the CSS property "background".

To optimize and compress your CSS code, you can use our [online CSS compressor and optimizer](#) based on csstidy. If you want to create a linear or radial gradient as background or border, check our [CSS Gradient Generator](#).

Hey! You found this booklet interesting? Support Converting Colors with the new Membership Option!

The pro membership hides all ads, plus gives you double the colors in the color bucket, and more awesome pro features!

[Learn more, Memberships starting at \\$2.50/m!](#)

**Follow me
on Twitter!**

@ConvertingColor