

Converting Colors

Hex(CAB9B2)

Have a look what the booklet for
Hex(CAB9B2) contains.

Hex(CAB9B2)	3
<i>Conversions</i>	4
<i>Details</i>	6
<i>Harmonies</i>	11
<i>Previews</i>	23
<i>Color Blindness Simulation</i>	26
<i>CSS Examples</i>	29

Color

Hex(CAB9B2)

Conversions

Conversions Part 1

Format	Color
Hex	CAB9B2
RGB	202, 185, 178
RGB Percent	79%, 73%, 70%
CMY	0.2078, 0.2745, 0.3020
CMYK	0.00, 0.08, 0.12, 0.21
HSL	18°, 18%, 75%
HSV	18°, 12%, 79%
XYZ	49.7420, 50.4688, 49.2393
YIQ	189.2850, 12.3790, 1.4270

Conversions

Conversions Part 2

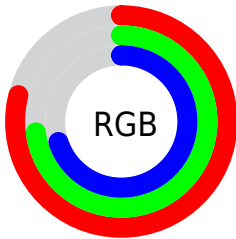
Format	Color
R _Y B	202, 188, 178
Decimal	13285810
CIE Lab	76.36, 4.84, 5.72
CIE LCh	76, 7.497, 49.740
Yxy	50.4688, 0.3328, 0.3377
Android (android.graphics.Color)	4291475890 (0xFFCAB9B2)
YUV	189.2850, -5.5635, 11.1511
Hunter-Lab	71.0414, 0.6601, 8.6347

Details

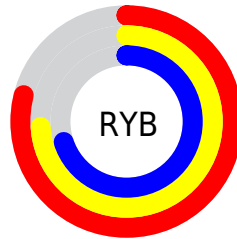
The Hex color **CAB9B2** is a light color, and the websafe version is hex **CCCCCC**. A complement of this color would be **B2C3CA**, and the grayscale version is **BDBDBD**.

A 20% lighter version of the original color is **FFF1EA**, and **94847D** is the 20% darker color. If you saturate the color by 10%, you get **CAAB9E**, and if you desaturate by 10%, it is **CAC7C6**.

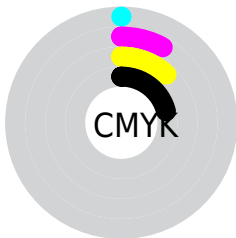
Distribution



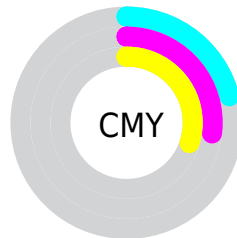
- Red (79%)
- Green (73%)
- Blue (70%)



- Red (79%)
- Yellow (74%)
- Blue (70%)



- Cyan (0%)
- Magenta (8%)
- Yellow (12%)
- Black (21%)



- Cyan (21%)
- Magenta (27%)
- Yellow (30%)

Brightness & Saturation Gradients

These gradients show how the Hex color CAB9B2 changes by changing the brightness by 10 percent. The first figure shows a shift by +10% for each color and the second figure -10%.

Similar to the brightness gradients but the following saturation gradients show a change of the Hex color CAB9B2 by changing the saturation by 10% instead.



CAB9B2



CAB9B2

FFFFFF



AF9E97



FFF1EA



94847D



7A6B64



61534D



493C36



322621



1E1109



000000



CAB9B2



CAB9B2

CAAB9E

CAC7C6

CA9C8A

CAD6DA

CA8E75

CAE4EF

CA8061

CAF2FF

CA714D

CAFFFF

CA6339

CA5525

CA4710

CA3B00

Harmonies

Analogous

The Analogous color harmony consists of three colors that are next to each other on the color wheel.



CCB8B8



CAB9B2



C5BBAF

Triad

The Triadic color harmony groups three colors that are evenly spaced from another and form a triangle on the color wheel.



CAB9B2



AFC0BA



BBBBC9

Complementary

The Complementary color scheme is a pair of colors which are on the opposite of each other on the color wheel.



CAB9B2



B2C3CA

Split Complementary

Split-complementary colors differ from the complementary color scheme. The scheme consists of three colors, the original color and two neighbors of the complement color.



B3BECA



CAB9B2



ACC0C1

Square

The Square scheme is like the rectangle color scheme, but the four colors are evenly spaced on the color wheel.



CAB9B2



B5FBF3



ADBFC7



C3B9C5

Rectangle

The Rectangle color scheme consists of four colors that form a rectangle on the color wheel.



CAB9B2



C0BDAF



ADBFC7



B8BCCA

Sweetspot

The Sweet Spot groups the original color and five complimentary colors.



CAB9B2



FFF8F5



CAB2C3



807B79



000000



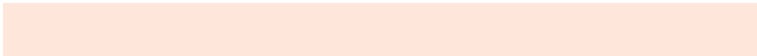
808080

Same Dimension

The Same Dimension uses a secret algorithm to generate beautiful new colors.



CAB9B2



FFE6DB



CAC5B2



665F5C



A63000



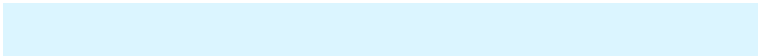
260B00

Inverse Universe

The Inverse Universe completely reimagines the original color for something new.



B2C3CA



DBF5FF



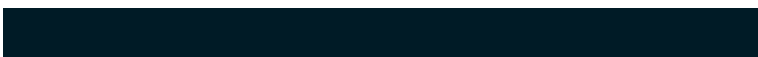
B2B7CA



5C6366



0075A6



001B26

Previews

White Background



This preview shows how the Hex color CAB9B2 looks on a white background.

Color Contrast Check

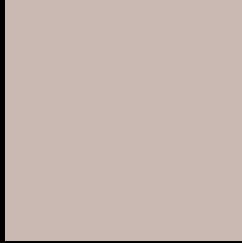
Large Text (above 18pt) WCAG AA × Fail

Any Text WCAG AA × Fail

Large Text (above 18pt) WCAG AAA × Fail

Any Text WCAG AAA × Fail

Black Background



This preview shows how the Hex color CAB9B2 looks on a black background.

Color Contrast Check

Large Text (above 18pt) WCAG AA ✓ Pass

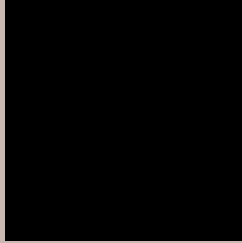
Any Text WCAG AA ✓ Pass

Large Text (above 18pt) WCAG AAA ✓ Pass

Any Text WCAG AAA ✓ Pass

If you want to check with other color combinations, try the [Color Contrast Checker](#).

Hex CAB9B2 Background



This preview shows how black text looks on a background with the Hex color CAB9B2.



This preview shows how white text looks on a background with the Hex color CAB9B2.

Color Blindness Simulation

Color vision deficiency is a very complex topic, and I could not describe the different causes any better than Wikipedia does, so if you want to learn more, you should check out their [article about color blindness](#).

Dichromacy



Original Color
CAB9B2

Protanopia
C2BCB3

Deuteranopia
D2B6B3



Tritanopia
CDB6C4

Trichromacy



Original Color
CAB9B2

Protanomaly
C5BBB3

Deuteranomaly
CFB7B3

Tritanomaly
CCB7BD

Monochromacy



Original Color
CAB9B2

Achromatopsia
BDBDBD

Achromatomaly
C2BCB9

CSS Examples

Text

The CSS property to change the color of the text to Hex CAB9B2 is called "color". The color property can be set on classes, ids or directly on the HTML element.

This example shows how text in the color #CAB9B2 looks like.

```
.text, #text, p{  
    color:#CAB9B2  
}
```

If you want to add a text shadow in that color use the text-shadow property, you can generate a text shadow directly with our [CSS Text Shadow Generator](#).

Here you see how black text with a 4 pixel #CAB9B2 colored shadow looks like.

```
.shadow{ text-shadow: 4px 4px 2px #CAB9B2
}
```

Border

The CSS property to change the border of an element to Hex CAB9B2 is called "border". The border property can be set on classes, ids or directly on the HTML element.

This example shows the color as border, it can be applied via the CSS property "border" or "border-color".

```
.border, #border, table{ border:4px solid
#CAB9B2 }
```

If only the border color should be changed use the property `border-color`.

```
.border{ border-color:#CAB9B2 }
```

If you want to add a box shadow in that color use:

Here you see how a box with a 4 pixel #CAB9B2 colored shadow looks like.

```
.boxshadow{ -moz-box-shadow:4px 4px 4px  
4px #CAB9B2; -webkit-box-shadow:4px 4px  
4px 4px #CAB9B2; box-shadow:4px 4px 4px  
4px #CAB9B2 }
```

Background

The CSS property to change the background color of an element to Hex CAB9B2 is called "background". The background property can be set on classes, ids or directly on the HTML element.

```
.background, #background, body{  
background:#CAB9B2 }
```

If only the background color should be changed can be used:

```
.background{ background-color:#CAB9B2 }
```

This example shows the color as background, it is applied via the CSS property "background".

To optimize and compress your CSS code, you can use our [online CSS compressor and optimizer](#) based on csstidy. If you want to create a linear or radial gradient as background or border, check our [CSS Gradient Generator](#).

Hey! You found this booklet interesting? Support Converting Colors with the new Membership Option!

The pro membership hides all ads, plus gives you double the colors in the color bucket, and more awesome pro features!

[Learn more, Memberships starting at \\$2.50/m!](#)

**Follow me
on Twitter!**

@ConvertingColor