

Converting Colors

Hex(CABC B7)

Have a look what the booklet for
Hex(CABCB7) contains.

Hex(CABCB7)	3
<i>Conversions</i>	4
<i>Details</i>	6
<i>Harmonies</i>	11
<i>Previews</i>	23
<i>Color Blindness Simulation</i>	26
<i>CSS Examples</i>	29

Color

Hex(CABC7)

Conversions

Conversions Part 1

Format	Color
Hex	CABCB7
RGB	202, 188, 183
RGB Percent	79%, 74%, 72%
CMY	0.2078, 0.2627, 0.2824
CMYK	0.00, 0.07, 0.09, 0.21
HSL	16°, 15%, 75%
HSV	16°, 9%, 79%
XYZ	50.8876, 51.9419, 52.1435
YIQ	191.6160, 9.9490, 1.4130

Conversions

Conversions Part 2

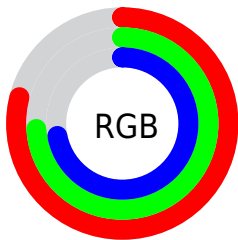
Format	Color
R_{YB}	202, 190, 183
Decimal	13286583
CIE _{Lab}	77.25, 4.08, 4.29
CIE _{LCh}	77, 5.923, 46.476
Yxy	51.9419, 0.3284, 0.3352
Android (android.graphics.Color)	4291476663 (0xFFCABC _{B7})
YUV	191.6160, -4.2477, 9.1068
Hunter-Lab	72.0707, -0.0888, 7.5529

Details

The Hex color **CABCB7** is a light color, and the websafe version is hex **CCCCCC**. A complement of this color would be **B7C5CA**, and the grayscale version is **C0C0C0**.

A 20% lighter version of the original color is **FFF4EF**, and **948782** is the 20% darker color. If you saturate the color by 10%, you get **CAADA3**, and if you desaturate by 10%, it is **CACBCB**.

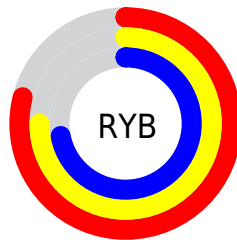
Distribution



Red (79%)

Green (74%)

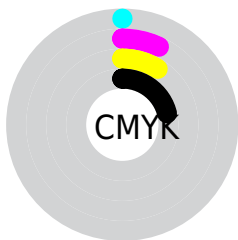
Blue (72%)



Red (79%)

Yellow (75%)

Blue (72%)

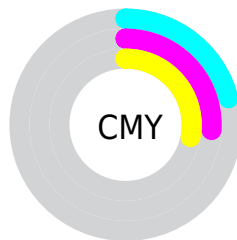


Cyan (0%)

Magenta (7%)

Yellow (9%)

Black (21%)



Cyan (21%)

Magenta (26%)

Yellow (28%)

Brightness & Saturation Gradients

These gradients show how the Hex color CABCB7 changes by changing the brightness by 10 percent. The first figure shows a shift by +10% for each color and the second figure -10%.

Similar to the brightness gradients but the following saturation gradients show a change of the Hex color CABCB7 by changing the saturation by 10% instead.

 CABCB7

 CABCB7


FFFFFF

 AFA19C

 FFF4EF

 948782

 7A6E69

 615551

 493E3A

 332824

 1E140F

 000000

 CABCB7

 CABCB7

CAADA3

CACBCB

CA9E8F

CADADF

CA8F7A

CAE9F4

CA8066

CAF8FF

CA7252

CAFFFF

CA633E

CA542A

CA4515

CA3601

Harmonies

Analogous

The Analogous color harmony consists of three colors that are next to each other on the color wheel.



CBBBBC



CABCB7



C6BEB4

Triad

The Triadic color harmony groups three colors that are evenly spaced from another and form a triangle on the color wheel.



CABCB7



B4C2BC



BDBEC9

Complementary

The Complementary color scheme is a pair of colors which are on the opposite of each other on the color wheel.



CABCB7



B7C5CA

Split Complementary

Split-complementary colors differ from the complementary color scheme. The scheme consists of three colors, the original color and two neighbors of the complement color.



B7C0C9



CABCB7



B2C2C2

Square

The Square scheme is like the rectangle color scheme, but the four colors are evenly spaced on the color wheel.



CABCB7



BAC1B7



B3C1C6



C4BCC6

Rectangle

The Rectangle color scheme consists of four colors that form a rectangle on the color wheel.



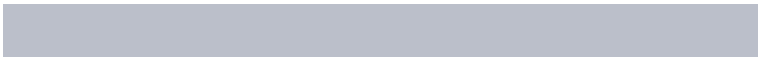
CABCB7



C2BFB4



B3C1C6



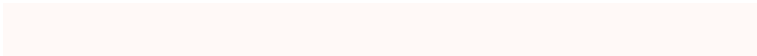
BBBFCA

Sweetspot

The Sweet Spot groups the original color and five complimentary colors.



CABCB7



FFF9F7



CAB7C5



807C7A



000000



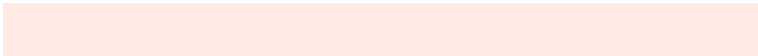
808080

Same Dimension

The Same Dimension uses a secret algorithm to generate beautiful new colors.



CABCB7



FFEAE3



CAC5B7



665E5C



A62C00



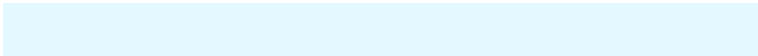
260A00

Inverse Universe

The Inverse Universe completely reimagines the original color for something new.



B7C5CA



E3F8FF



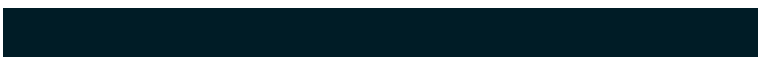
B7BCCA



5C6366



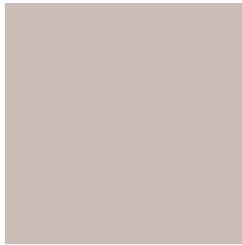
007AA6



001C26

Previews

White Background



This preview shows how the Hex color CABCB7 looks on a white background.

Color Contrast Check

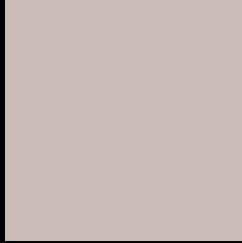
Large Text (above 18pt) WCAG AA × Fail

Any Text WCAG AA × Fail

Large Text (above 18pt) WCAG AAA × Fail

Any Text WCAG AAA × Fail

Black Background



This preview shows how the Hex color CABCB7 looks on a black background.

Color Contrast Check

Large Text (above 18pt) WCAG AA ✓ Pass

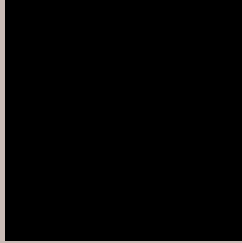
Any Text WCAG AA ✓ Pass

Large Text (above 18pt) WCAG AAA ✓ Pass

Any Text WCAG AAA ✓ Pass

If you want to check with other color combinations, try the [Color Contrast Checker](#).

Hex CABCB7 Background



This preview shows how black text looks on a background with the Hex color CABCB7.



This preview shows how white text looks on a background with the Hex color CABCB7.

Color Blindness Simulation

Color vision deficiency is a very complex topic, and I could not describe the different causes any better than Wikipedia does, so if you want to learn more, you should check out their [article about color blindness](#).

Dichromacy





Tritanopia
CCB9C8

Trichromacy



Original Color
CABCB7

Protanomaly
C6BDB8

Deuteranomaly
D0B9B8

Tritanomaly
CBBAC2

Monochromacy



Original Color
CABCB7

Achromatopsia
C0C0C0

Achromatomaly
C4BFBD

CSS Examples

Text

The CSS property to change the color of the text to Hex CABCB7 is called "color". The color property can be set on classes, ids or directly on the HTML element.

This example shows how text in the color #CABCB7 looks like.

```
.text, #text, p{  
    color:#CABCB7  
}
```

If you want to add a text shadow in that color use the text-shadow property, you can generate a text shadow directly with our [CSS Text Shadow Generator](#).

Here you see how black text with a 4 pixel #CABCB7 colored shadow looks like.

```
.shadow{ text-shadow: 4px 4px 2px #CABCB7  
}
```

Border

The CSS property to change the border of an element to Hex CABCB7 is called "border". The border property can be set on classes, ids or directly on the HTML element.

This example shows the color as border, it can be applied via the CSS property "border" or "border-color".

```
.border, #border, table{ border:4px solid  
#CABCB7 }
```

If only the border color should be changed use the property `border-color`.

```
.border{ border-color:#CABCB7 }
```

If you want to add a box shadow in that color use:

Here you see how a box with a 4 pixel #CABCB7 colored shadow looks like.

```
.boxshadow{ -moz-box-shadow:4px 4px 4px  
4px #CABCB7; -webkit-box-shadow:4px 4px  
4px 4px #CABCB7; box-shadow:4px 4px 4px  
4px #CABCB7 }
```

Background

The CSS property to change the background color of an element to Hex CABCB7 is called "background". The background property can be set on classes, ids or directly on the HTML element.

```
.background, #background, body{  
background:#CABCB7 }
```

If only the background color should be changed can be used:

```
.background{ background-color:#CABCB7 }
```

This example shows the color as background, it is applied via the CSS property "background".

To optimize and compress your CSS code, you can use our [online CSS compressor and optimizer](#) based on csstidy. If you want to create a linear or radial gradient as background or border, check our [CSS Gradient Generator](#).

Hey! You found this booklet interesting? Support Converting Colors with the new Membership Option!

The pro membership hides all ads, plus gives you double the colors in the color bucket, and more awesome pro features!

[Learn more, Memberships starting at \\$2.50/m!](#)

**Follow me
on Twitter!**

@ConvertingColor