

# Converting Colors

Hex(CB9594)

Have a look what the booklet for  
Hex(CB9594) contains.

<b>Hex(CB9594)</b> .....	3
<i><b>Conversions</b></i> .....	4
<i><b>Details</b></i> .....	6
<i><b>Harmonies</b></i> .....	11
<i><b>Previews</b></i> .....	23
<i><b>Color Blindness Simulation</b></i> .....	26
<i><b>CSS Examples</b></i> .....	29

**Color**

**Hex(CB9594)**

# Conversions

## Conversions Part 1

<b>Format</b>	<b>Color</b>
Hex	CB9594
RGB	203, 149, 148
RGB Percent	80%, 58%, 58%
CMY	0.2039, 0.4157, 0.4196
CMYK	0.00, 0.27, 0.27, 0.20
HSL	1°, 35%, 69%
HSV	1°, 27%, 80%
XYZ	40.7213, 36.3295, 32.8830
YIQ	165.0320, 32.5050, 11.1370

# Conversions

## Conversions Part 2

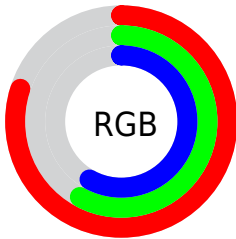
Format	Color
<a href="#">RYB</a>	<a href="#">203, 149, 148</a>
Decimal	<a href="#">13342100</a>
CIELab	<a href="#">66.77, 20.16, 8.52</a>
CIELCh	<a href="#">67, 21.890, 22.919</a>
Yxy	<a href="#">36.3295, 0.3704, 0.3305</a>
Android (android.graphics.Color)	<a href="#">4291532180</a> ( <a href="#">0xFFFCB9594</a> )
YUV	<a href="#">165.0320, -8.3968, 33.2979</a>
Hunter-Lab	<a href="#">60.2740, 15.1159, 9.8456</a>

# Details

The Hex color **CB9594** is a light color, and the websafe version is hex **CC9999**. A complement of this color would be **94CACB**, and the grayscale version is **A5A5A5**.

A 20% lighter version of the original color is **FFCBCA**, and **946261** is the 20% darker color. If you saturate the color by 10%, you get **CB8180**, and if you desaturate by 10%, it is **CBA9A8**.

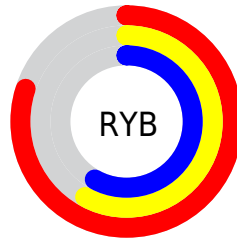
# Distribution



Red (80%)

Green (58%)

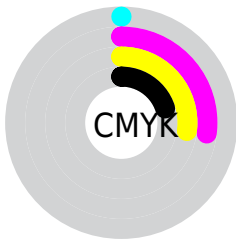
Blue (58%)



Red (80%)

Yellow (58%)

Blue (58%)

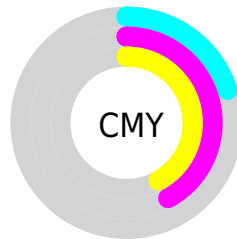


Cyan (0%)

Magenta (27%)

Yellow (27%)

Black (20%)



Cyan (20%)

Magenta (42%)

Yellow (42%)

# Brightness & Saturation Gradients

These gradients show how the Hex color CB9594 changes by changing the brightness by 10 percent. The first figure shows a shift by +10% for each color and the second figure -10%.

Similar to the brightness gradients but the following saturation gradients show a change of the Hex color CB9594 by changing the saturation by 10% instead.



 CB9594

 CB9594

FFFFFF

 AF7B7A

 FFCBCA

 946261

 FFE8E6

 794A4A

 5F3333

 461C1E

 2F0605

 0F0000

 000000

 CB9594

 CB9594

 CB8180

 CBA9A8

 CB6D6B

 CBBDBD

 CB5957

 CBD1D1

 CB4543

 CBE5E5

 CB312F

 CBF9FA

 CB1D1A

 CBFFFF

 CB0906

 CB0400

# Harmonies

## Analogous

The Analogous color harmony consists of three colors that are next to each other on the color wheel.



C795A8



CB9594



C59984

# Triad

The Triadic color harmony groups three colors that are evenly spaced from another and form a triangle on the color wheel.



CB9594



8BAB8A



85A6C9

# Complementary

The Complementary color scheme is a pair of colors which are on the opposite of each other on the color wheel.



CB9594



94CACB

# Split Complementary

Split-complementary colors differ from the complementary color scheme. The scheme consists of three colors, the original color and two neighbors of the complement color.



70ABC1



CB9594



76AD9D

# Square

The Square scheme is like the rectangle color scheme, but the four colors are evenly spaced on the color wheel.



CB9594



A1A67E



6BADB1



A09FC7

# Rectangle

The Rectangle color scheme consists of four colors that form a rectangle on the color wheel.



CB9594



BB9D7D



6BADB1



7DA8C8

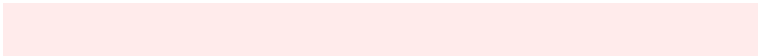


# Sweetspot

The Sweet Spot groups the original color and five complimentary colors.



CB9594



FFEBE8



CB94CA



807373



000000



808080



# Same Dimension

The Same Dimension uses a secret algorithm to generate beautiful new colors.



CB9594



FFACAB



CBB094



665C5C



A60300



260100



# Inverse Universe

The Inverse Universe completely reimagines the original color for something new.



94CACB



ABFDFF



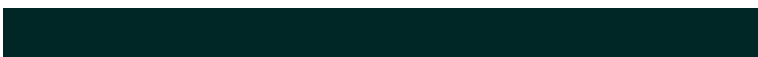
94AFCB



5C6666



00A3A6

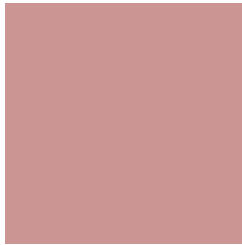


002626



# Previews

## White Background



This preview shows how the Hex color CB9594 looks on a white background.

## Color Contrast Check

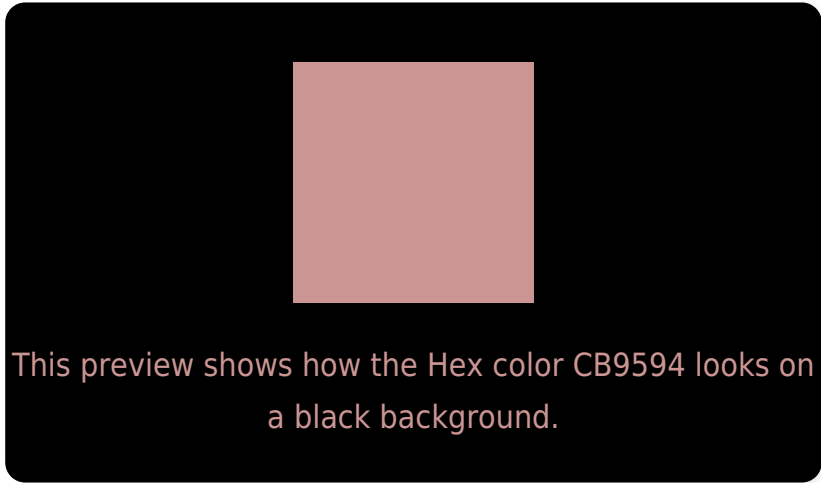
Large Text (above 18pt) WCAG AA × Fail

Any Text WCAG AA × Fail

Large Text (above 18pt) WCAG AAA × Fail

Any Text WCAG AAA × Fail

# Black Background



## Color Contrast Check

Large Text (above 18pt) WCAG AA ✓ Pass

Any Text WCAG AA ✓ Pass

Large Text (above 18pt) WCAG AAA ✓ Pass

Any Text WCAG AAA ✓ Pass

If you want to check with other color combinations, try the [Color Contrast Checker](#).



## Hex CB9594 Background



This preview shows how black text looks on a background with the Hex color CB9594.



This preview shows how white text looks on a background with the Hex color CB9594.

# Color Blindness Simulation

Color vision deficiency is a very complex topic, and I could not describe the different causes any better than Wikipedia does, so if you want to learn more, you should check out their [article about color blindness](#).


## Dichromacy



**Original Color**  
CB9594

**Protanopia**  
A7A29B

**Deuteranopia**  
B89D93



**Tritanopia**  
CC939F

# Trichromacy



**Original Color**  
CB9594

**Protanomaly**  
B49D98

**Deuteranomaly**  
BF9A93

**Tritanomaly**  
CC949B

# Monochromacy



**Original Color**  
CB9594

**Achromatopsia**  
A5A5A5

**Achromatomaly**  
B39F9F

# CSS Examples

## Text

The CSS property to change the color of the text to Hex CB9594 is called "color". The color property can be set on classes, ids or directly on the HTML element.

This example shows how text in the color #CB9594 looks like.

```
.text, #text, p{  
    color:#CB9594  
}
```

If you want to add a text shadow in that color use the text-shadow property, you can generate a text shadow directly with our [CSS Text Shadow Generator](#).

Here you see how black text with a 4 pixel #CB9594 colored shadow looks like.

```
.shadow{ text-shadow: 4px 4px 2px #CB9594
}
```

## Border

The CSS property to change the border of an element to Hex CB9594 is called "border". The border property can be set on classes, ids or directly on the HTML element.

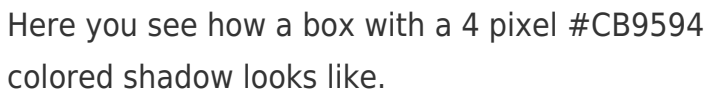
This example shows the color as border, it can be applied via the CSS property "border" or "border-color".

```
.border, #border, table{ border:4px solid
#CB9594 }
```

If only the border color should be changed use the property `border-color`.

```
.border{ border-color:#CB9594 }
```

If you want to add a box shadow in that color use:



Here you see how a box with a 4 pixel #CB9594 colored shadow looks like.

```
.boxshadow{ -moz-box-shadow:4px 4px 4px  
4px #CB9594; -webkit-box-shadow:4px 4px  
4px 4px #CB9594; box-shadow:4px 4px 4px  
4px #CB9594 }
```

# Background

The CSS property to change the background color of an element to Hex CB9594 is called "background". The background property can be set on classes, ids or directly on the HTML element.

```
.background, #background, body{  
background:#CB9594 }
```

If only the background color should be changed can be used:

```
.background{ background-color:#CB9594 }
```

This example shows the color as background, it is applied via the CSS property "background".

To optimize and compress your CSS code, you can use our [online CSS compressor and optimizer](#) based on csstidy. If you want to create a linear or radial gradient as background or border, check our [CSS Gradient Generator](#).



Hey! You found this booklet interesting? Support Converting Colors with the new Membership Option!

The pro membership hides all ads, plus gives you double the colors in the color bucket, and more awesome pro features!

**[Learn more, Memberships starting at \\$2.50/m!](#)**

**Follow me  
on Twitter!**

@ConvertingColor