

# Converting Colors

Hex(CB9899)

Have a look what the booklet for  
Hex(CB9899) contains.

<b>Hex(CB9899)</b> .....	3
<i><b>Conversions</b></i> .....	4
<i><b>Details</b></i> .....	6
<i><b>Harmonies</b></i> .....	11
<i><b>Previews</b></i> .....	23
<i><b>Color Blindness Simulation</b></i> .....	26
<i><b>CSS Examples</b></i> .....	29

# **Color**

**Hex(CB9899)**

# Conversions

## Conversions Part 1

Format	Color
Hex	CB9899
RGB	203, 152, 153
RGB Percent	80%, 60%, 60%
CMY	0.2039, 0.4039, 0.4000
CMYK	0.00, 0.25, 0.25, 0.20
HSL	359°, 33%, 70%
HSV	359°, 25%, 80%
XYZ	41.6066, 37.4529, 35.1732
YIQ	167.3630, 30.0750, 11.1230

# Conversions

## Conversions Part 2

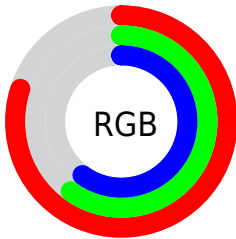
<b>Format</b>	<b>Color</b>
<b>R<sub>YB</sub></b>	203, 152, 153
Decimal	13342873
CIE <sub>Lab</sub>	67.62, 19.23, 6.94
CIE <sub>LCh</sub>	68, 20.446, 19.828
Yxy	37.4529, 0.3642, 0.3279
Android (android.graphics.Color)	4291532953 (0xFFCB9899)
YUV	167.3630, -7.0810, 31.2536
Hunter-Lab	61.1988, 14.2572, 8.7630

# Details

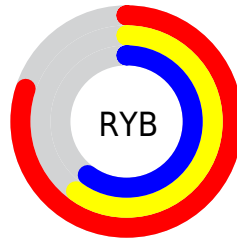
The Hex color **CB9899** is a light color, and the websafe version is hex **CC9999**. A complement of this color would be **98CBCA**, and the grayscale version is **A7A7A7**.

A 20% lighter version of the original color is **FFCFCF**, and **946566** is the 20% darker color. If you saturate the color by 10%, you get **CB8485**, and if you desaturate by 10%, it is **CBACAD**.

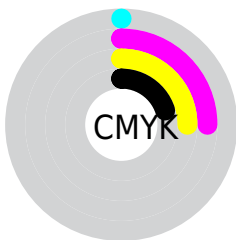
# Distribution



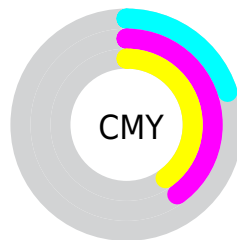
- Red (80%)
- Green (60%)
- Blue (60%)



- Red (80%)
- Yellow (60%)
- Blue (60%)



- Cyan (0%)
- Magenta (25%)
- Yellow (25%)
- Black (20%)



- Cyan (20%)
- Magenta (40%)
- Yellow (40%)

# Brightness & Saturation Gradients

These gradients show how the Hex color CB9899 changes by changing the brightness by 10 percent. The first figure shows a shift by +10% for each color and the second figure -10%.

Similar to the brightness gradients but the following saturation gradients show a change of the Hex color CB9899 by changing the saturation by 10% instead.





CB9899



CB9899

FFFFFF



AF7E7F



FFCFCF



946566



FFE8E8



794C4E



603537



471F22



2F0A0C



140000



000000



CB9899



CB9899

 CB8485

 CBACAD

 CB6F71

 CBC1C1

 CB5B5D

 CBD5D5

 CB4749

 CBE9E9

 CB3335

 CBFEFD

 CB1E22

 CBFFFF

 CB0A0E

 CB0004

# Harmonies

## Analogous

The Analogous color harmony consists of three colors that are next to each other on the color wheel.



C698AC



CB9899



C69C89

# Triad

The Triadic color harmony groups three colors that are evenly spaced from another and form a triangle on the color wheel.



CB9899



91AC8C



87A8C8

# Complementary

The Complementary color scheme is a pair of colors which are on the opposite of each other on the color wheel.



CB9899



98CBCA

# Split Complementary

Split-complementary colors differ from the complementary color scheme. The scheme consists of three colors, the original color and two neighbors of the complement color.



75ADC0



CB9899



7DAF9E

# Square

The Square scheme is like the rectangle color scheme, but the four colors are evenly spaced on the color wheel.



CB9899



A6A782



72AFB0



A0A2C7

# Rectangle

The Rectangle color scheme consists of four colors that form a rectangle on the color wheel.



CB9899



BE9F83



72AFB0



80AAC7



# Sweetspot

The Sweet Spot groups the original color and five complimentary colors.



CB9899



FFEBE8



C998CB



807373



000000



808080



# Same Dimension

The Same Dimension uses a secret algorithm to generate beautiful new colors.



CB9899



FFB3B4



CBB098



665C5C



A60003



260001



# Inverse Universe

The Inverse Universe completely reimagines the original color for something new.



CB9899



FFB3B4



98B3CB



665C5C



A60003

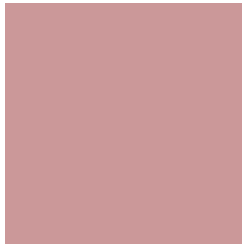


260001



# Previews

## White Background



This preview shows how the Hex color CB9899 looks on a white background.

## Color Contrast Check

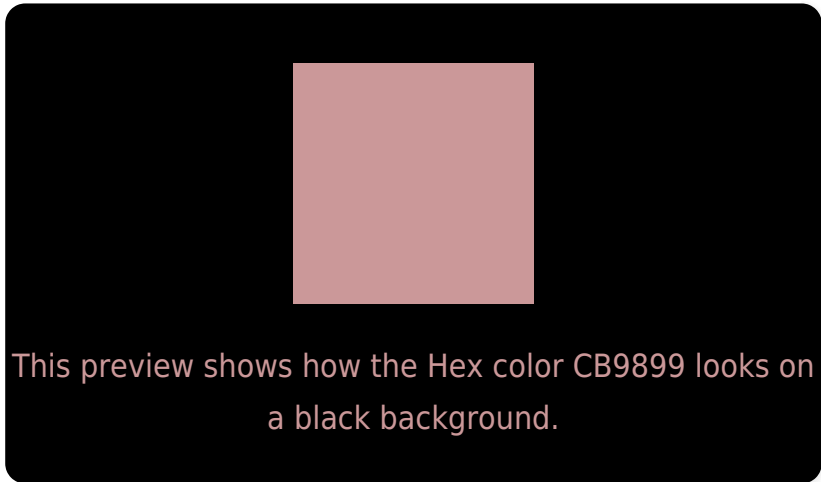
Large Text (above 18pt) WCAG AA × Fail

Any Text WCAG AA × Fail

Large Text (above 18pt) WCAG AAA × Fail

Any Text WCAG AAA × Fail

# Black Background



## Color Contrast Check

Large Text (above 18pt) WCAG AA ✓ Pass

Any Text WCAG AA ✓ Pass

Large Text (above 18pt) WCAG AAA ✓ Pass

Any Text WCAG AAA ✓ Pass

If you want to check with other color combinations, try the [Color Contrast Checker](#).



## Hex CB9899 Background



This preview shows how black text looks on a background with the Hex color CB9899.

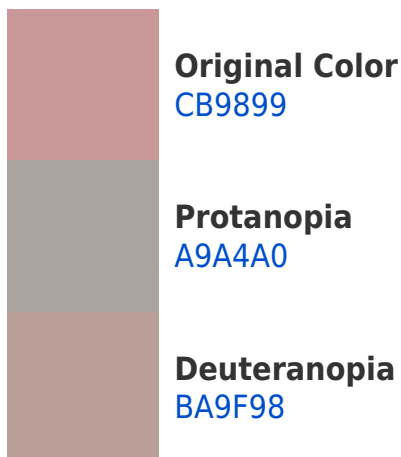


This preview shows how white text looks on a background with the Hex color CB9899.

# Color Blindness Simulation

Color vision deficiency is a very complex topic, and I could not describe the different causes any better than Wikipedia does, so if you want to learn more, you should check out their [article about color blindness](#).

## Dichromacy



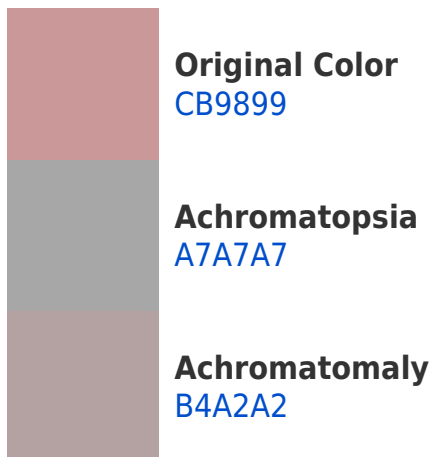


**Tritanopia**  
CC97A2

# Trichromacy



# Monochromacy



# CSS Examples

## Text

The CSS property to change the color of the text to Hex CB9899 is called "color". The color property can be set on classes, ids or directly on the HTML element.

This example shows how text in the color #CB9899 looks like.

```
.text, #text, p{  
    color:#CB9899  
}
```

If you want to add a text shadow in that color use the text-shadow property, you can generate a text shadow directly with our [CSS Text Shadow Generator](#).

Here you see how black text with a 4 pixel #CB9899 colored shadow looks like.

```
.shadow{ text-shadow: 4px 4px 2px #CB9899
}
```

## Border

The CSS property to change the border of an element to Hex CB9899 is called "border". The border property can be set on classes, ids or directly on the HTML element.

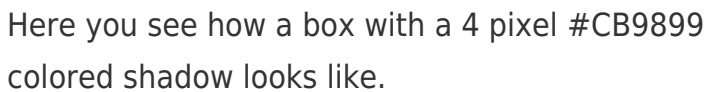
This example shows the color as border, it can be applied via the CSS property "border" or "border-color".

```
.border, #border, table{ border:4px solid
#CB9899 }
```

If only the border color should be changed use the property `border-color`.

```
.border{ border-color:#CB9899 }
```

If you want to add a box shadow in that color use:



Here you see how a box with a 4 pixel #CB9899 colored shadow looks like.

```
.boxshadow{ -moz-box-shadow:4px 4px 4px  
4px #CB9899; -webkit-box-shadow:4px 4px  
4px 4px #CB9899; box-shadow:4px 4px 4px  
4px #CB9899 }
```

# Background

The CSS property to change the background color of an element to Hex CB9899 is called "background". The background property can be set on classes, ids or directly on the HTML element.

```
.background, #background, body{  
background:#CB9899 }
```

If only the background color should be changed can be used:

```
.background{ background-color:#CB9899 }
```

This example shows the color as background, it is applied via the CSS property "background".

To optimize and compress your CSS code, you can use our [online CSS compressor and optimizer](#) based on csstidy. If you want to create a linear or radial gradient as background or border, check our [CSS Gradient Generator](#).



Hey! You found this booklet interesting? Support Converting Colors with the new Membership Option!

The pro membership hides all ads, plus gives you double the colors in the color bucket, and more awesome pro features!

**[Learn more, Memberships starting at \\$2.50/m!](#)**

**Follow me  
on Twitter!**

@ConvertingColor