

Converting Colors

Hex(CB998D)

Have a look what the booklet for
Hex(CB998D) contains.

Hex(CB998D)	3
<i>Conversions</i>	4
<i>Details</i>	6
<i>Harmonies</i>	11
<i>Previews</i>	23
<i>Color Blindness Simulation</i>	26
<i>CSS Examples</i>	29

Color

Hex(CB998D)

Conversions

Conversions Part 1

Format	Color
Hex	CB998D
RGB	203, 153, 141
RGB Percent	80%, 60%, 55%
CMY	0.2039, 0.4000, 0.4471
CMYK	0.00, 0.25, 0.31, 0.20
HSL	12°, 37%, 67%
HSV	12°, 31%, 80%
XYZ	40.8276, 37.4021, 30.2668
YIQ	166.5820, 33.6520, 6.8680

Conversions

Conversions Part 2

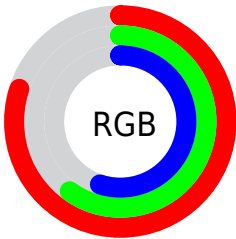
Format	Color
R _Y B	203, 156, 141
Decimal	13343117
CIE Lab	67.58, 17.01, 13.57
CIE LCh	68, 21.763, 38.583
Yxy	37.4021, 0.3763, 0.3447
Android (android.graphics.Color)	4291533197 (0xFFFCB998D)
YUV	166.5820, -12.6119, 31.9386
Hunter-Lab	61.1572, 12.1385, 13.4674

Details

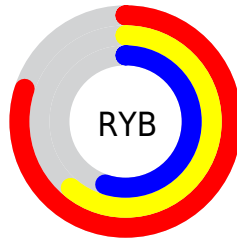
The Hex color **CB998D** is a light color, and the websafe version is hex **CC9999**. A complement of this color would be **8DBFCB**, and the grayscale version is **A7A7A7**.

A 20% lighter version of the original color is **FFCFC3**, and **94665B** is the 20% darker color. If you saturate the color by 10%, you get **CB8979**, and if you desaturate by 10%, it is **CBA9A1**.

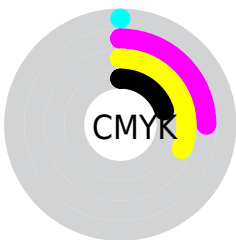
Distribution



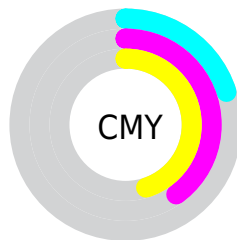
- Red (80%)
- Green (60%)
- Blue (55%)



- Red (80%)
- Yellow (61%)
- Blue (55%)



- Cyan (0%)
- Magenta (25%)
- Yellow (31%)
- Black (20%)



- Cyan (20%)
- Magenta (40%)
- Yellow (45%)

Brightness & Saturation Gradients

These gradients show how the Hex color CB998D changes by changing the brightness by 10 percent. The first figure shows a shift by +10% for each color and the second figure -10%.

Similar to the brightness gradients but the following saturation gradients show a change of the Hex color CB998D by changing the saturation by 10% instead.

 CB998D

 CB998D

FFFFFF

 AF7F73

 FFCFC3

 94665B

 FFECDF

 794E43

 FFFFFB

 5F362D

 462018

 2F0B00

 100000

 000000

 CB998D

 CB998D

 CB8979

 CBA9A1

 CB7864

 CBBAB6

 CB6850

 CBCACA

 CB583C

 CBDADE

 CB4728

 CBEBF3

 CB3713

 CBFBF3

 CB2700

 CBFFFF

Harmonies

Analogous

The Analogous color harmony consists of three colors that are next to each other on the color wheel.



CC97A0



CB998D



C09F81

Triad

The Triadic color harmony groups three colors that are evenly spaced from another and form a triangle on the color wheel.



CB998D



82AF96



95A4CB

Complementary

The Complementary color scheme is a pair of colors which are on the opposite of each other on the color wheel.



CB998D



8DBFCB

Split Complementary

Split-complementary colors differ from the complementary color scheme. The scheme consists of three colors, the original color and two neighbors of the complement color.



7CAAC9



CB998D



71B0AA

Square

The Square scheme is like the rectangle color scheme, but the four colors are evenly spaced on the color wheel.



CB998D



98AB86



6EAEBC



AF9EC3

Rectangle

The Rectangle color scheme consists of four colors that form a rectangle on the color wheel.



CB998D



B4A37E



6EAEB3



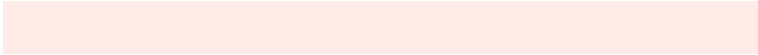
8CA7CB

Sweetspot

The Sweet Spot groups the original color and five complimentary colors.



CB998D



FFECE8



CB8DC0



807471



000000



808080

Same Dimension

The Same Dimension uses a secret algorithm to generate beautiful new colors.



CB998D



FFB3A1



CBB78D



665E5C



A62000



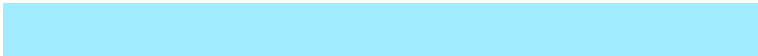
260700

Inverse Universe

The Inverse Universe completely reimagines the original color for something new.



8DBFCB



A1EDFF



8DA1CB



5C6466



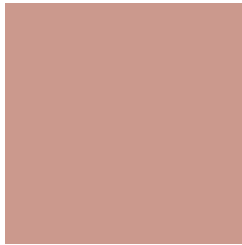
0086A6



001F26

Previews

White Background



This preview shows how the Hex color CB998D looks on a white background.

Color Contrast Check

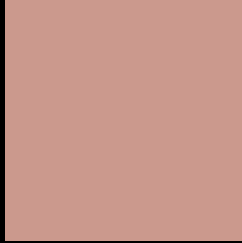
Large Text (above 18pt) WCAG AA × Fail

Any Text WCAG AA × Fail

Large Text (above 18pt) WCAG AAA × Fail

Any Text WCAG AAA × Fail

Black Background



This preview shows how the Hex color CB998D looks on a black background.

Color Contrast Check

Large Text (above 18pt) WCAG AA ✓ Pass

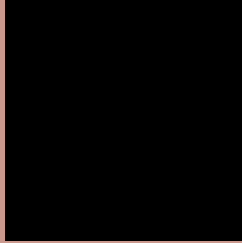
Any Text WCAG AA ✓ Pass

Large Text (above 18pt) WCAG AAA ✓ Pass

Any Text WCAG AAA ✓ Pass

If you want to check with other color combinations, try the [Color Contrast Checker](#).

Hex CB998D Background



This preview shows how black text looks on a background with the Hex color CB998D.

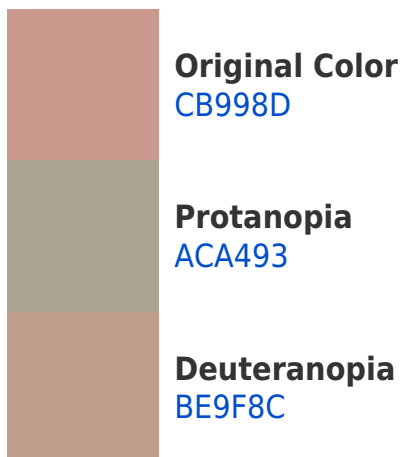



This preview shows how white text looks on a background with the Hex color CB998D.

Color Blindness Simulation

Color vision deficiency is a very complex topic, and I could not describe the different causes any better than Wikipedia does, so if you want to learn more, you should check out their [article about color blindness](#).

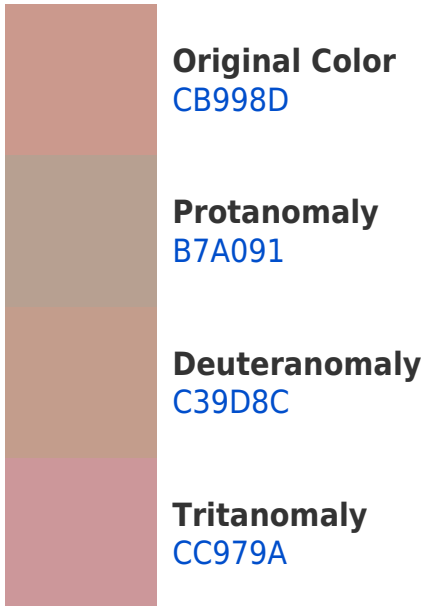
Dichromacy





Tritanopia
CD96A1

Trichromacy



Monochromacy



CSS Examples

Text

The CSS property to change the color of the text to Hex CB998D is called "color". The color property can be set on classes, ids or directly on the HTML element.

This example shows how text in the color #CB998D looks like.

```
.text, #text, p{  
    color:#CB998D  
}
```

If you want to add a text shadow in that color use the text-shadow property, you can generate a text shadow directly with our [CSS Text Shadow Generator](#).

Here you see how black text with a 4 pixel #CB998D colored shadow looks like.

```
.shadow{ text-shadow: 4px 4px 2px #CB998D
}
```

Border

The CSS property to change the border of an element to Hex CB998D is called "border". The border property can be set on classes, ids or directly on the HTML element.

This example shows the color as border, it can be applied via the CSS property "border" or "border-color".

```
.border, #border, table{ border:4px solid
#CB998D }
```

If only the border color should be changed use the property `border-color`.

```
.border{ border-color:#CB998D }
```

If you want to add a box shadow in that color use:

Here you see how a box with a 4 pixel #CB998D colored shadow looks like.

```
.boxshadow{ -moz-box-shadow:4px 4px 4px  
4px #CB998D; -webkit-box-shadow:4px 4px  
4px 4px #CB998D; box-shadow:4px 4px 4px  
4px #CB998D }
```

Background

The CSS property to change the background color of an element to Hex CB998D is called "background". The background property can be set on classes, ids or directly on the HTML element.

```
.background, #background, body{  
background:#CB998D }
```

If only the background color should be changed can be used:

```
.background{ background-color:#CB998D }
```

This example shows the color as background, it is applied via the CSS property "background".

To optimize and compress your CSS code, you can use our [online CSS compressor and optimizer](#) based on csstidy. If you want to create a linear or radial gradient as background or border, check our [CSS Gradient Generator](#).

Hey! You found this booklet interesting? Support Converting Colors with the new Membership Option!

The pro membership hides all ads, plus gives you double the colors in the color bucket, and more awesome pro features!

[Learn more, Memberships starting at \\$2.50/m!](#)

**Follow me
on Twitter!**

@ConvertingColor